



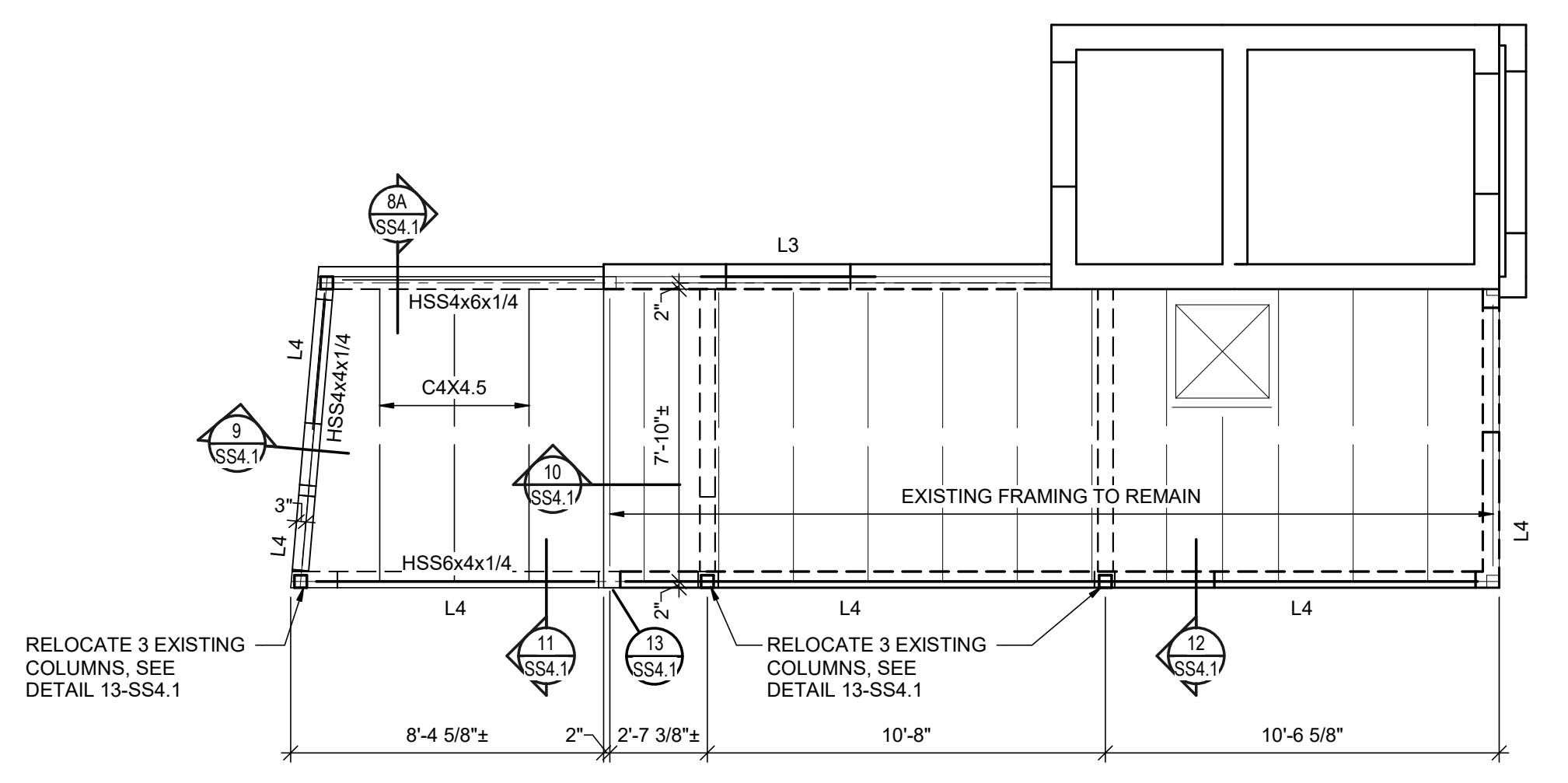
©2021 MKEC Engineering All Rights Reserved
www.mkec.com
These drawings and their contents, including, but not limited to, all concepts, designs, & ideas are the exclusive property of MKEC Engineering (MKEC), and may not be used or reproduced in any way without the express consent of MKEC.

PRESSBOX FLOOR AND ROOF FRAMING PLANS

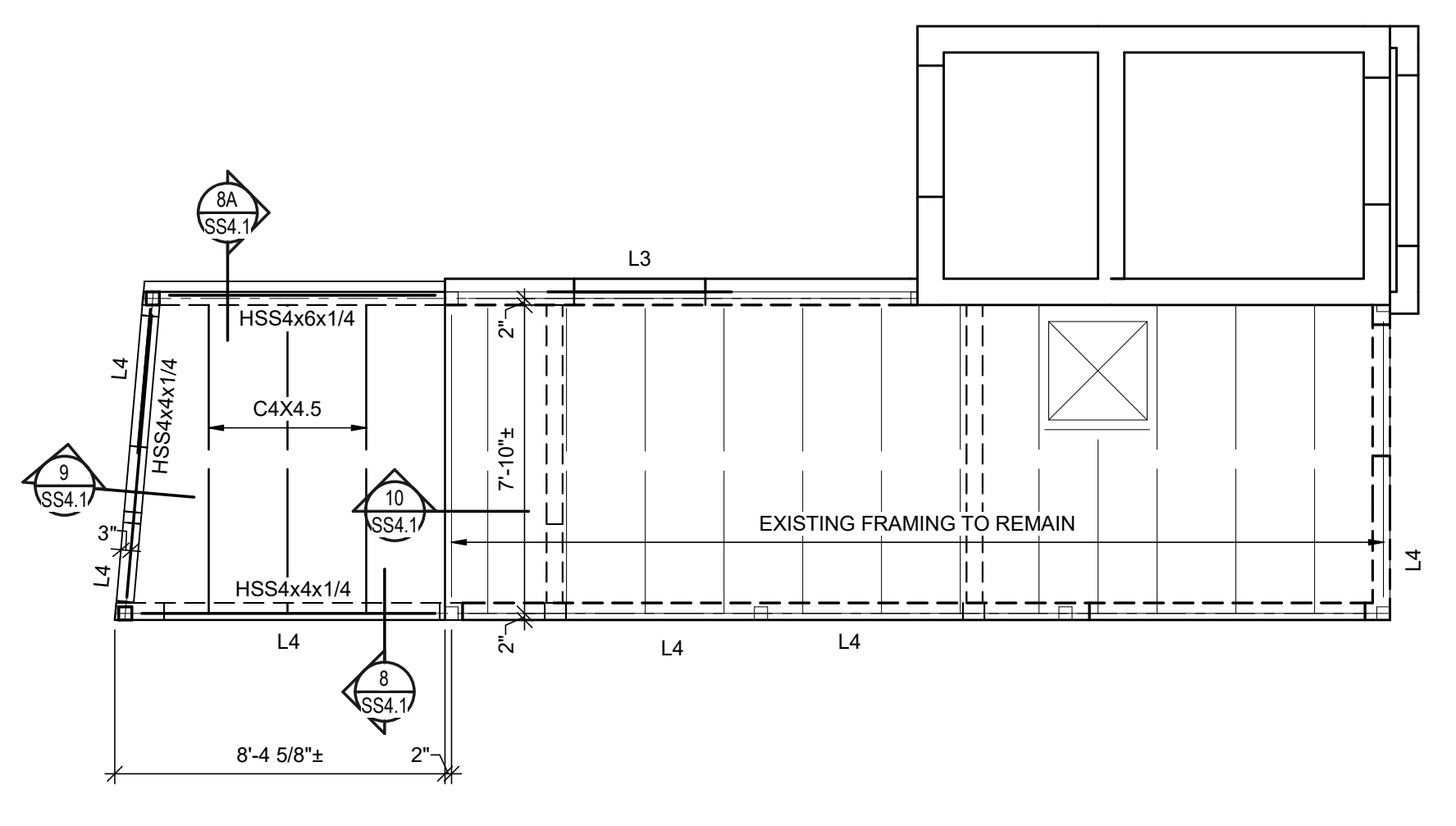
PROJECT NO.	1701010567	
DATE	NOV. 2021	
SCALE	AS NOTED	
DESIGNED	DRAWN	CHECKED
DM	BN MB	DM

0	ISSUED FOR CONSTRUCTION	11-24-21
NO.	REVISION	DATE

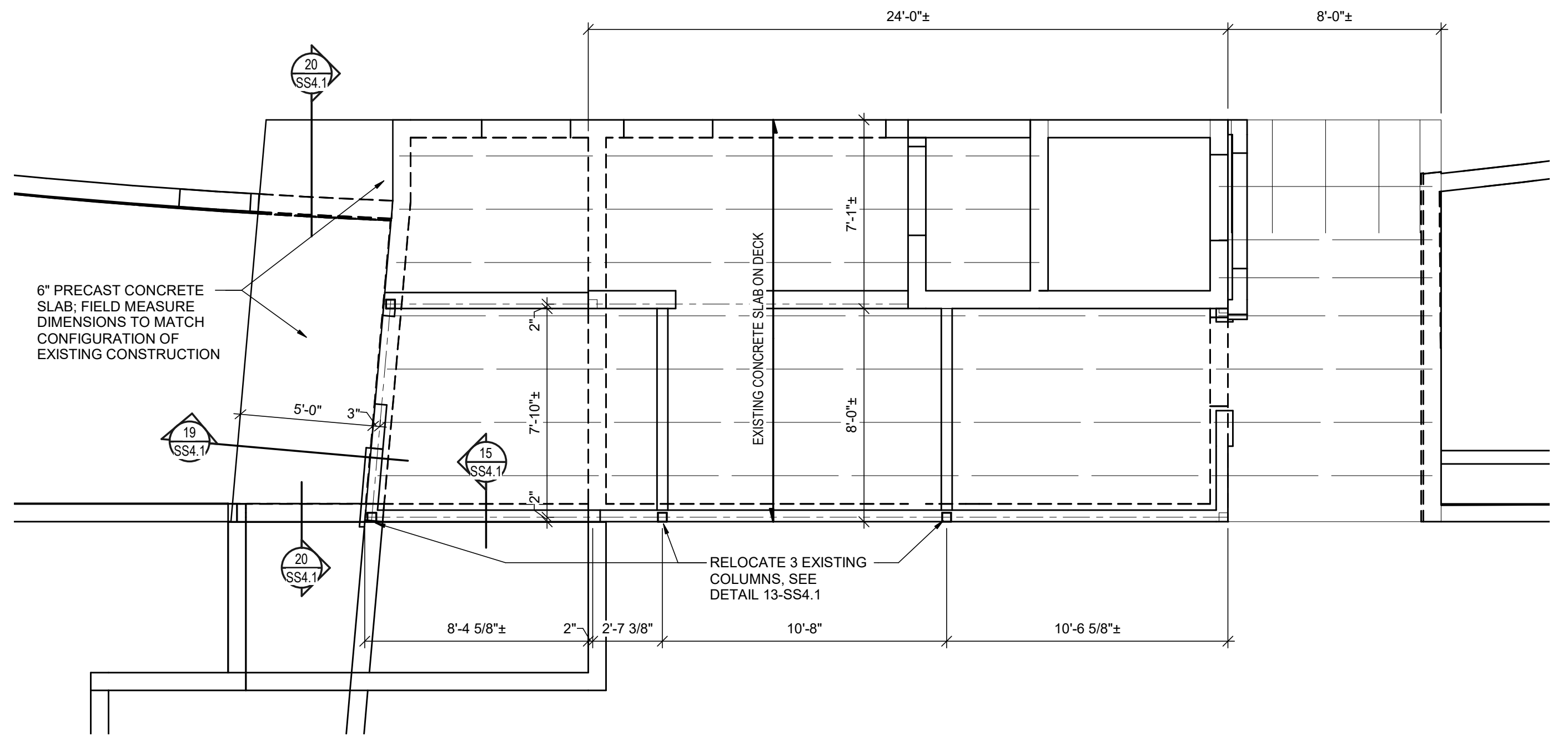
SHEET NO. **SS1.3**



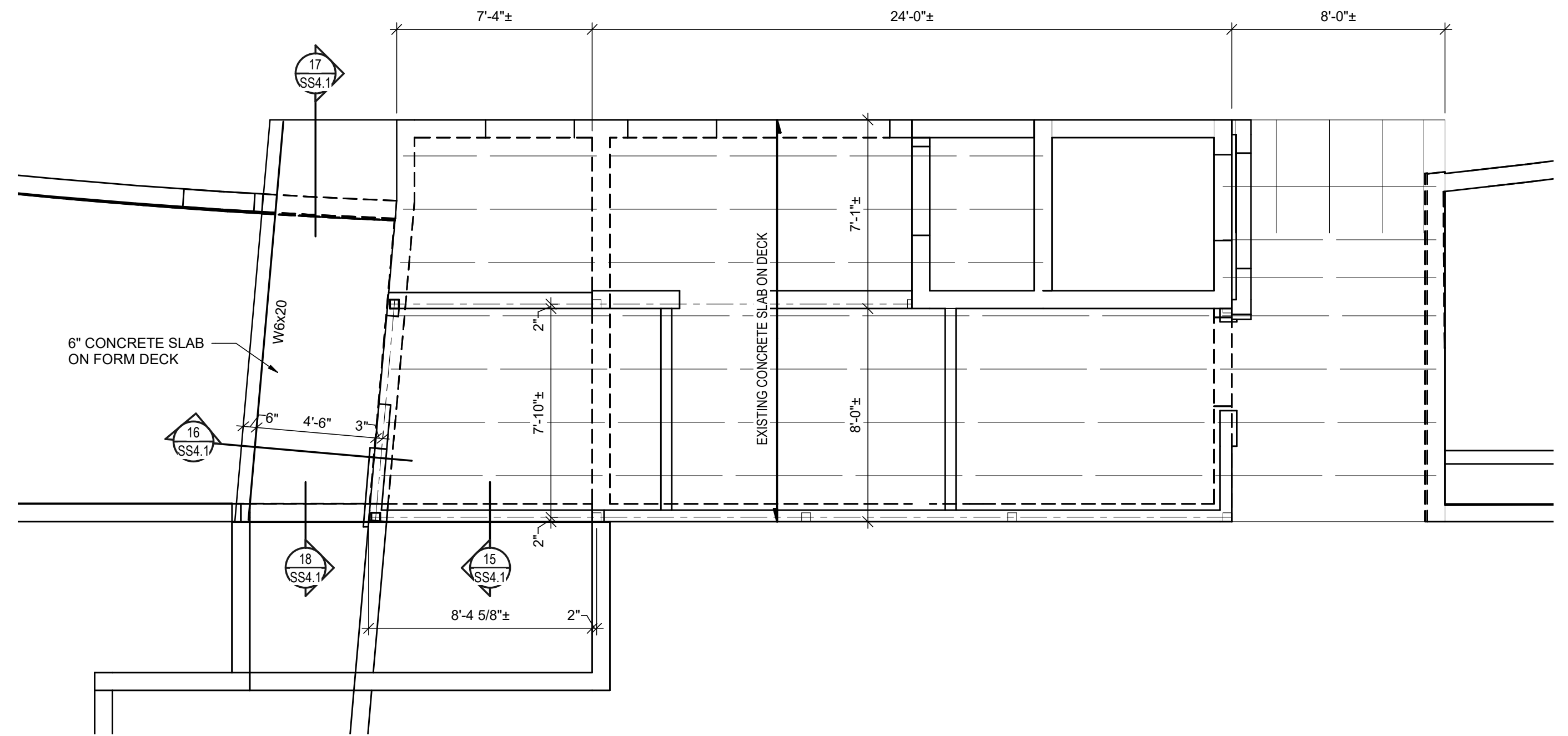
D ALTERNATE ROOF FRAMING PLAN - PRESSBOX
1/4" = 1'-0"
NORTH



B ROOF FRAMING PLAN - PRESSBOX
1/4" = 1'-0"
NORTH



C ALTERNATE FLOOR FRAMING PLAN - PRESSBOX
1/4" = 1'-0"
NORTH



A FLOOR FRAMING PLAN - PRESSBOX
1/4" = 1'-0"
NORTH

- KEYED PLAN NOTES**
- 1 SAW CUT EXISTING MASONRY WALLS AT CORNER FOR REMOVAL OF WALLS AS SHOWN ON ARCHITECTURAL DRAWINGS.
 - 2 SEE CIVIL PLANS FOR RELOCATING SEWER. RECOMPACT SOILS BELOW BUILDING AS SPECIFIED WHERE EXISTING LINE IS REMOVED. WHERE NEW SEWER IS LESS THAN 3 FEET HORIZ. FROM NEW FOUNDATIONS (APPROX. AREA SHOWN HATCHED), OVER EXCAVATE BELOW FOOTING WIDTH TO BOTTOM OF PIPE (ELEV. 1377.50) AND BACKFILL WITH LEAN CONCRETE UP TO BOTTOM OF FOOTING.
 - 3 6" CONCRETE HOUSKEEPING PAD ON TOP OF SITE PAVING.
 - 4 2 ROWS OF STRAP BRIDGING AND BLOCKING PER DETAIL 27-SS4.1 EQUALLY SPACED BETWEEN PURLIN SUPPORTS.
 - 5 L3 1/2X3 1/2X3/8 BRACING AT BOTTOM OF PURLINS. SEE DETAILS 29, 30, AND 31-SS4.1.

PLAN MARKS

L# LINTEL MARK, SEE SCHEDULE, SHEET SS3.1

RTU # ROOF SUPPORTED MECHANICAL UNIT

WEIGHT

- PLAN NOTES**
1. SEE GENERAL STRUCTURAL NOTES, SHEET SS2.1, FOR ADDITIONAL NOTES AND INFORMATION.
 2. PLAN DIMENSIONS ARE TO FACE OF STUD OR MASONRY WALL, UNLESS NOTED OTHERWISE. SEE ARCHITECTURAL FOR DIMENSIONAL LOCATION OF MASONRY WALLS WHERE NOT DIMENSIONED ON STRUCTURAL DRAWINGS.
 3. CENTER TRENCH FOOTINGS BELOW WALLS, UNLESS NOTED OTHERWISE IN THE REFERENCED SECTIONS.
 4. SEE DETAIL 9-SS3.1 FOR TYPICAL CORNER BAR DETAIL. SEE DETAIL 10-SS3.1 FOR TYPICAL SLAB JOINT DETAILS.
 5. RECOMPACT SOIL PER SPECIFICATIONS AT ALL EXCAVATIONS FOR PIPING. SEE DETAIL 11-SS3.1 FOR DETAILS AT PIPING BELOW FOOTINGS.
 6. SEE SHEET SS3.1 FOR LINTEL SCHEDULE. SEE ARCHITECTURAL DRAWINGS FOR SIZES AND LOCATIONS OF DOOR AND WINDOW OPENINGS. SEE MECHANICAL/ELECTRICAL PLUMBING DRAWINGS FOR MEP OPENINGS SIZES AND LOCATIONS.
 7. SEE ARCHITECTURAL AND MECHANICAL DRAWINGS FOR SIZE AND LOCATION OF ROOF OPENINGS. VERIFY THE SIZE AND LOCATION OF ALL ROOF SUPPORTED MECHANICAL UNITS WITH THE MECHANICAL DRAWINGS AND THE MECHANICAL CONTRACTOR.