

FOUNDATION SECTIONS

PROJECT NO. 1701010567

DATE NOV. 2021

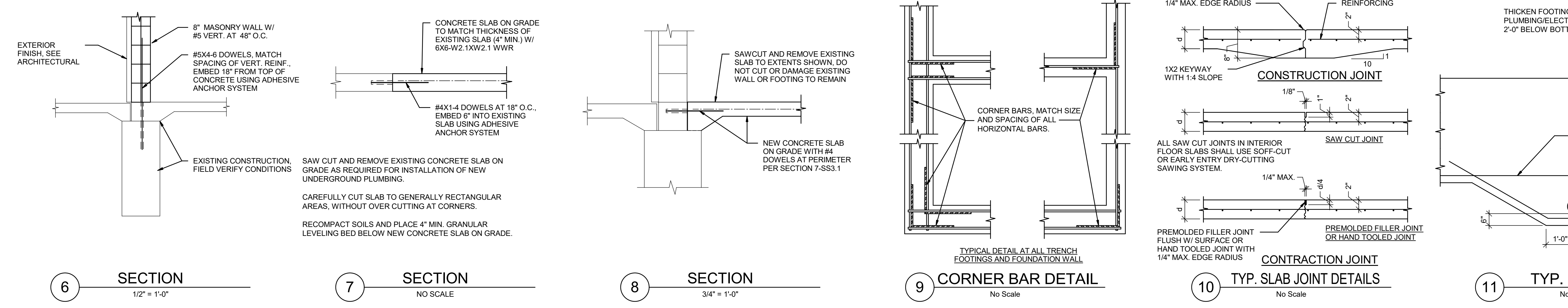
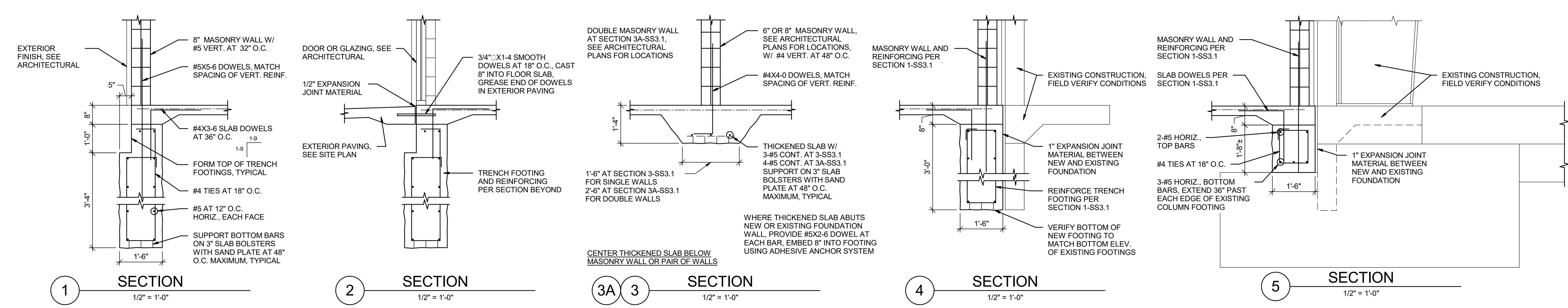
SCALE AS NOTED

DESIGNED DRAWN CHECKED
 DM BN MB DM

0 ISSUED FOR CONSTRUCTION 11-24-21

NO. REVISION DATE

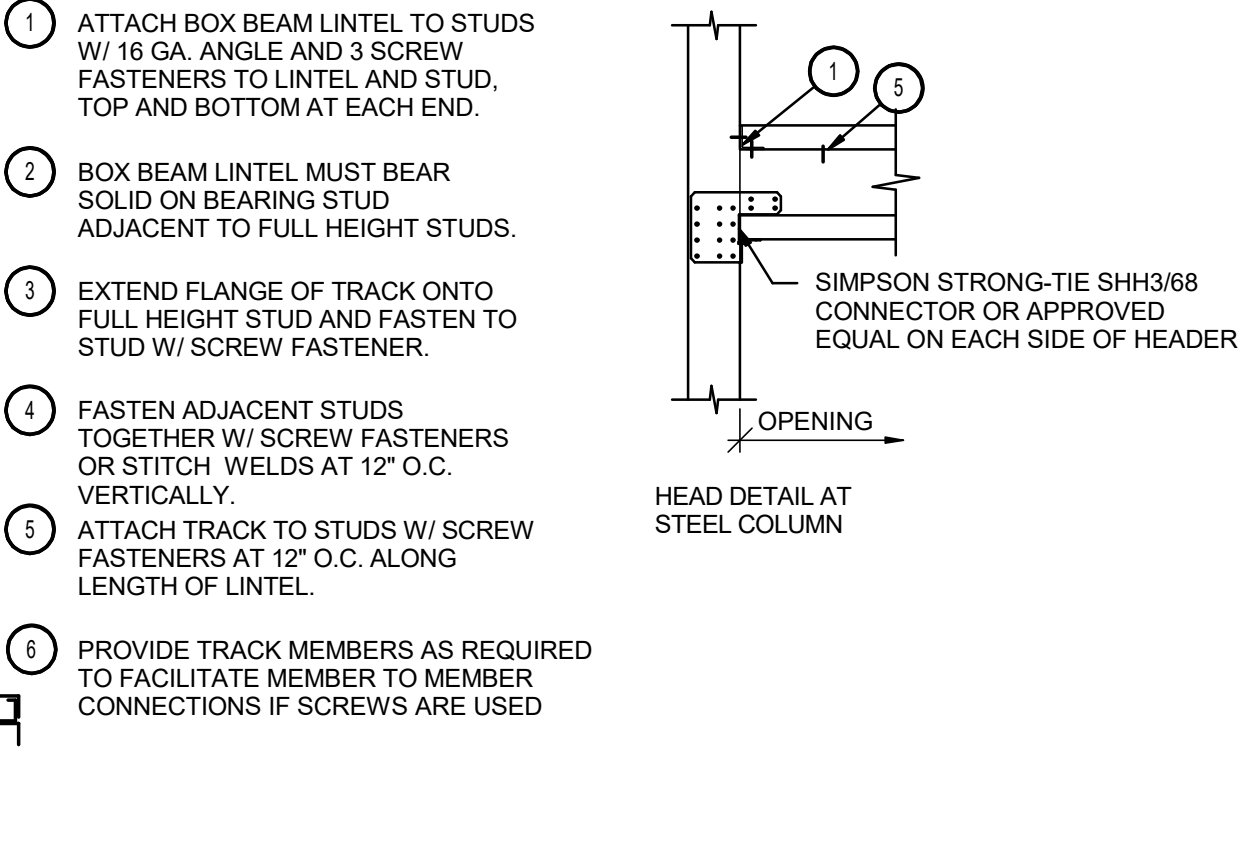
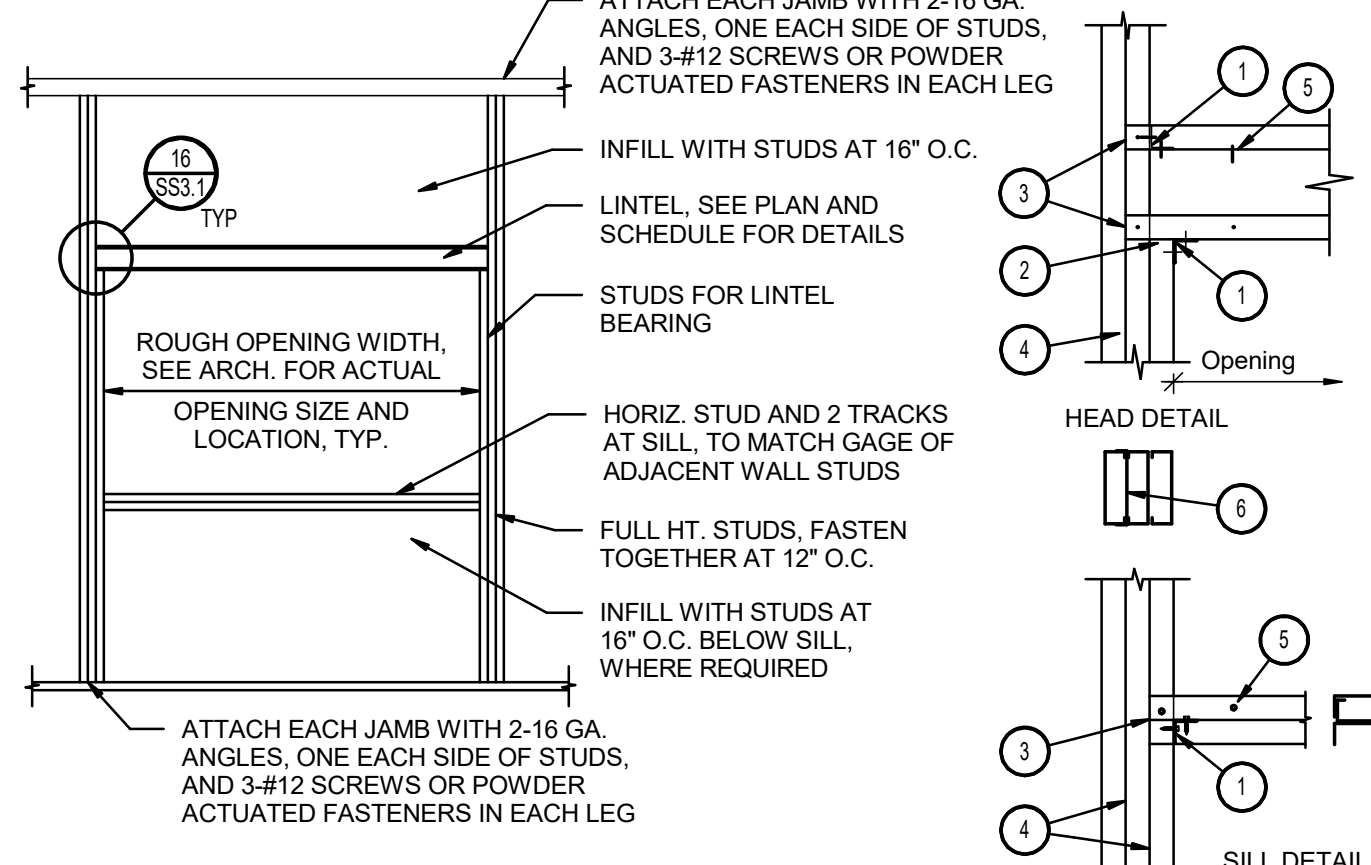
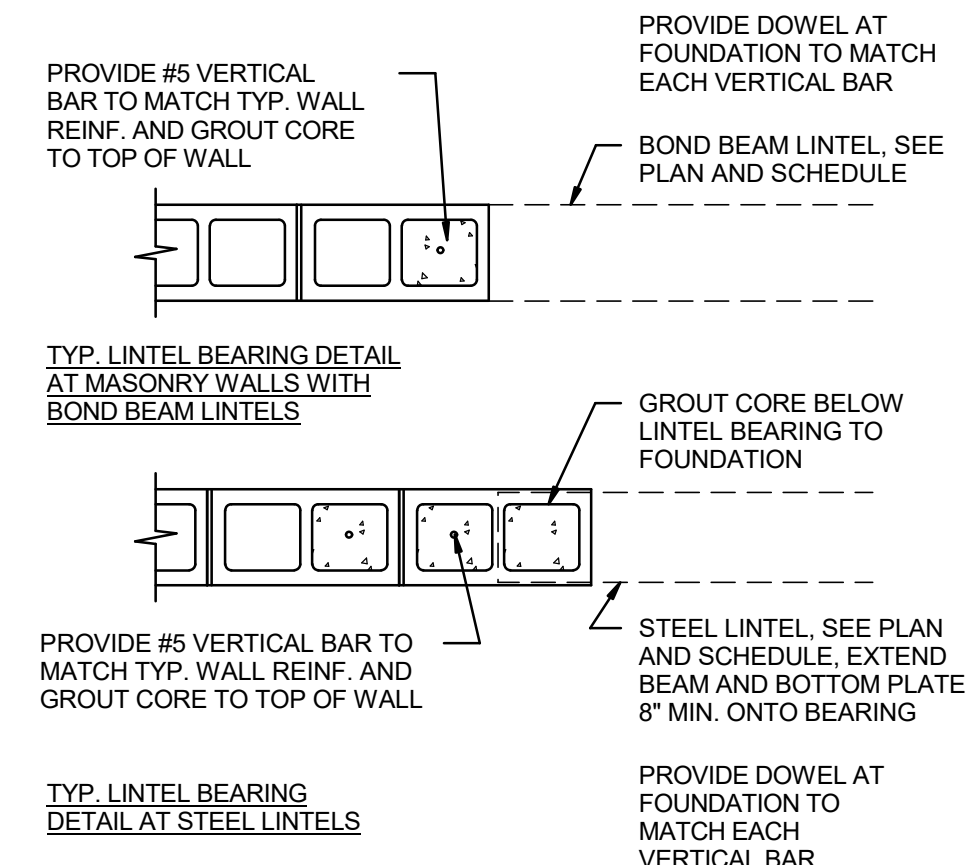
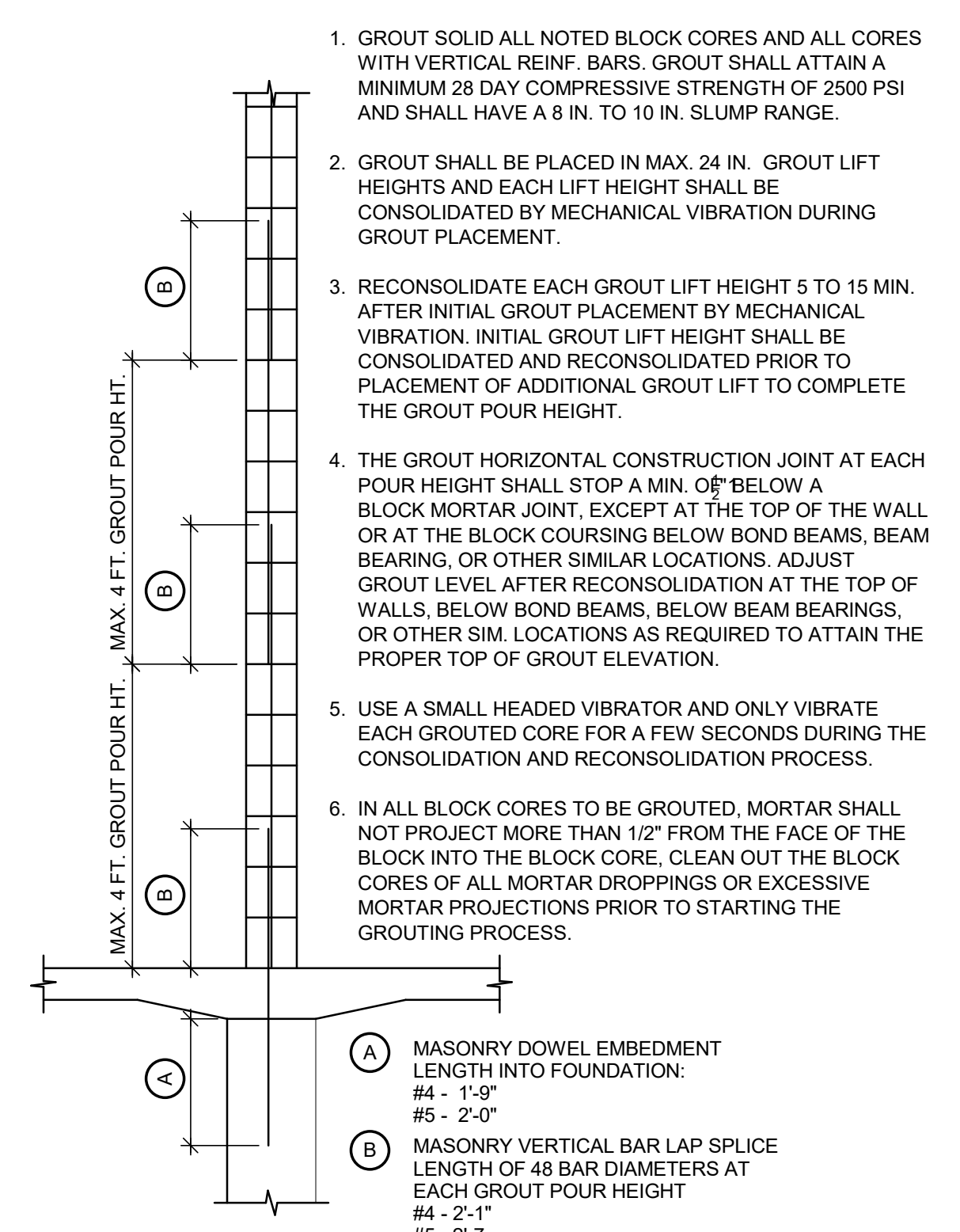
SHEET NO. SS3.1



LINTEL SCHEDULE

MARK	MEMBERS	TYPE	REMARKS
L1	8" DEEP BOND BEAM W/ 2-#4 CONT.	A	
L2	8" DEEP BOND BEAM W/ 1-#5 CONT.	B	
L3	8" DEEP BOND BEAM W/ 2-#4 CONT.	A	SEE DETAIL 4-SS3.1
L4	2-600S162-43 JOISTS	C	(A) (B)

- LINTEL SCHEDULE NOTES:**
- VERIFY SIZE, LOCATION, AND ELEVATION OF ALL WALL OPENINGS WITH THE ARCHITECTURAL DRAWINGS, THE MECHANICAL DRAWINGS AND THE MECHANICAL CONTRACTOR.
 - USE SPECIAL U-SHAPED BOND BEAM LINTEL BLOCK UNITS AT ALL MASONRY BOND BEAM LINTELS.
 - ALL MASONRY LINTELS ARE TO EXTEND 16" BEYOND JAMBS, EXCEPT EXTEND TO CORNER AT LOCATIONS WHERE CORNER OCCURS 16" OR LESS FROM JAMB. PROVIDE BOND BEAM AND CORNER BAR AT PERPENDICULAR WALL AT CORNERS. GROUT CORES SOLID BELOW LINTEL BEARING. SEE DETAIL 14-SS3.1 FOR ADDITIONAL NOTES AND INFORMATION.
 - PROPERLY SHORE ALL BOND BEAM LINTELS DURING BLOCK AND GROUT PLACEMENT. SHORES SHALL REMAIN IN PLACE FOR A MINIMUM OF 7 DAYS AND UNTIL THE GROUT HAS ATTAINED THE SPECIFIED COMPRESSIVE STRENGTH.
 - PROVIDE LINTEL L1 AT ALL OPENINGS 3'-4" OR LESS IN WIDTH IN 8" INTERIOR MASONRY WALLS. PROVIDE LINTEL L2 AT ALL OPENINGS 3'-4" OR LESS IN WIDTH IN 6" INTERIOR MASONRY WALLS.

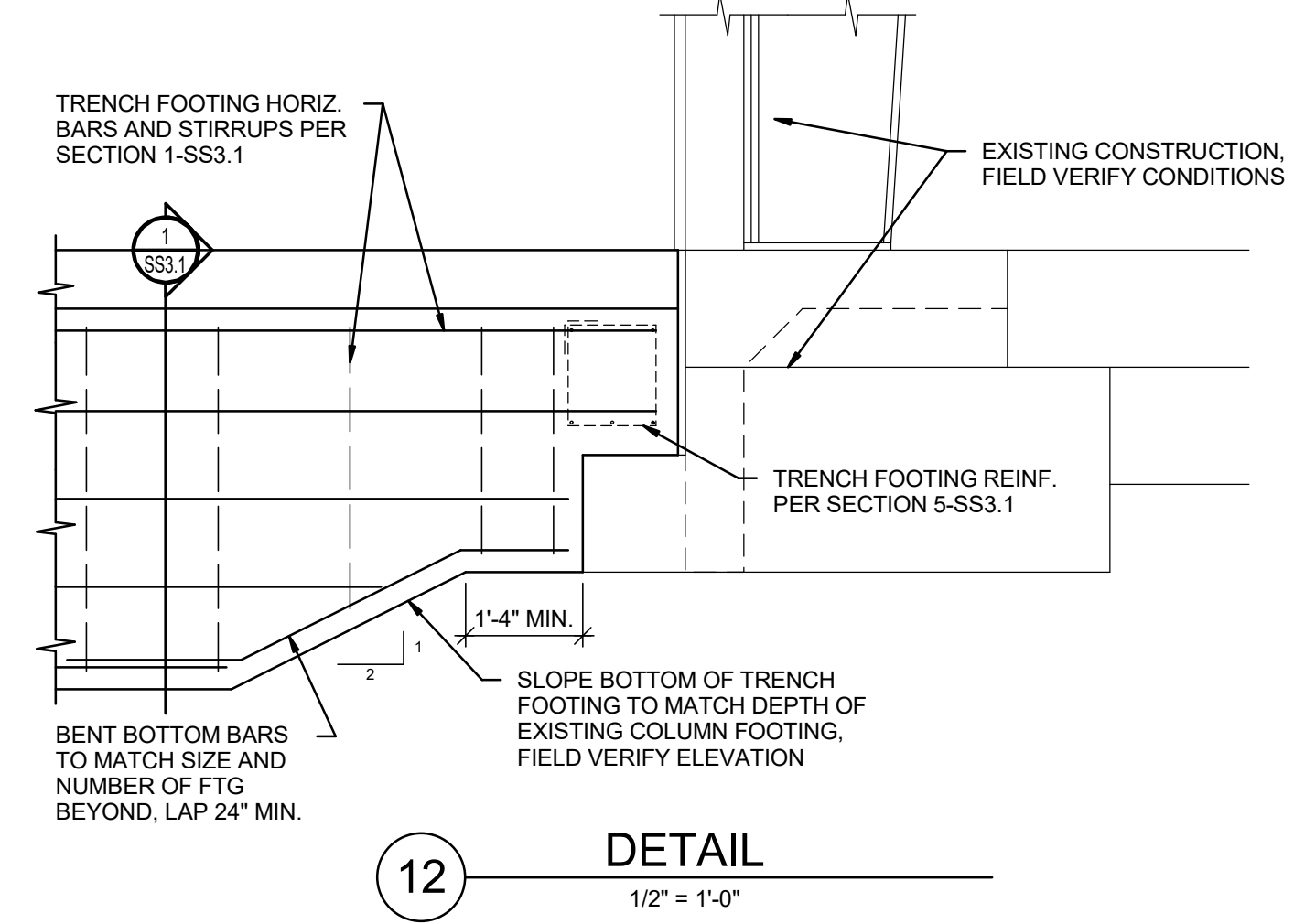


13 TYP. MAS. WALL REINF. DETAIL
No Scale

14 LINTEL BEARING DETAIL
No Scale

15 LINTEL DETAIL
No Scale

16 LINTEL DETAIL
No Scale



12 DETAIL
1/2" = 1'-0"

11/24/2021 3:30:26 AM C:\Users\demond\Documents\Revit\2021\1701010567\1701010567.dwg Stryker Sports - Indoor Facility - Stadium Improvements - R01 - Structural - R01 - dwg\mkec.com