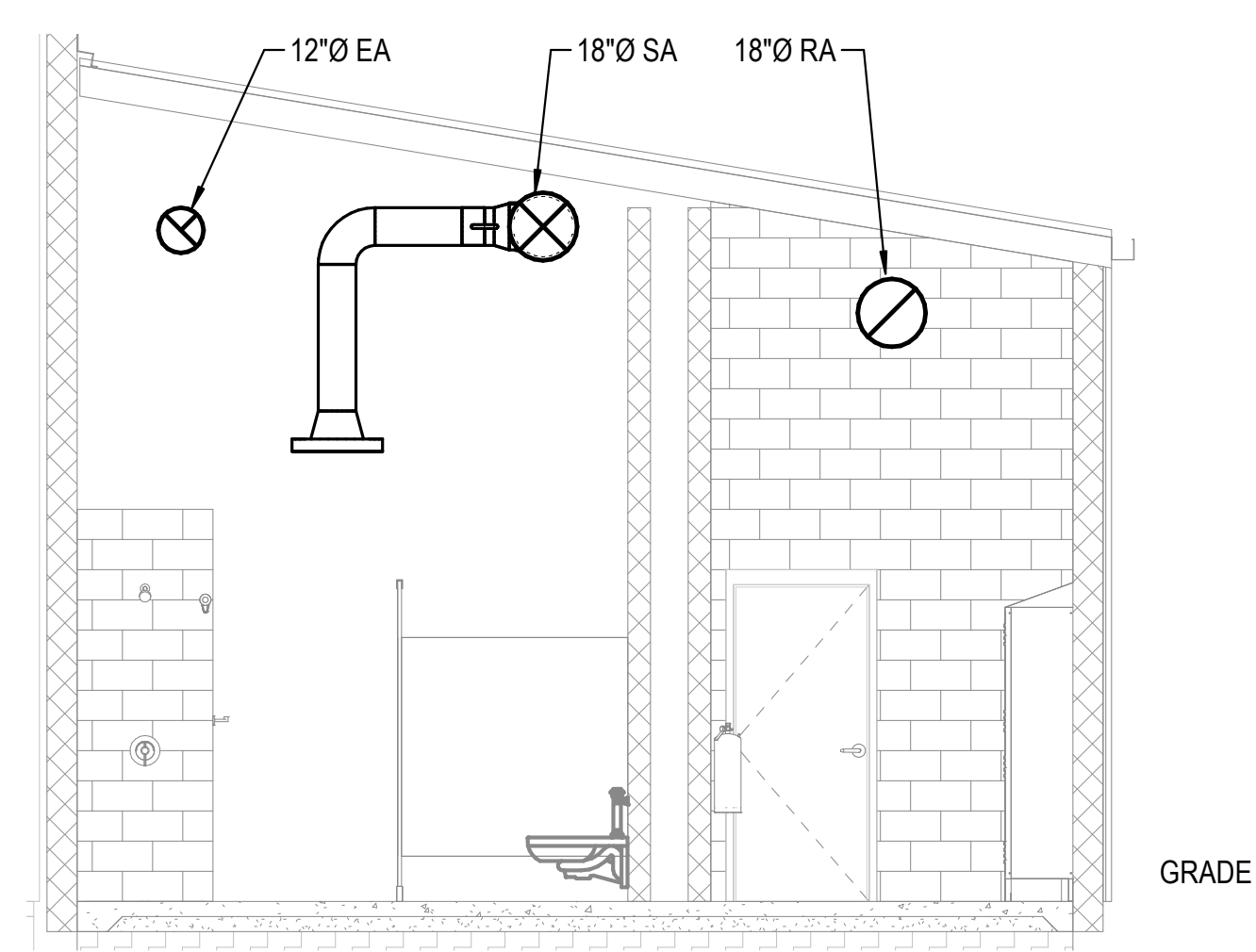
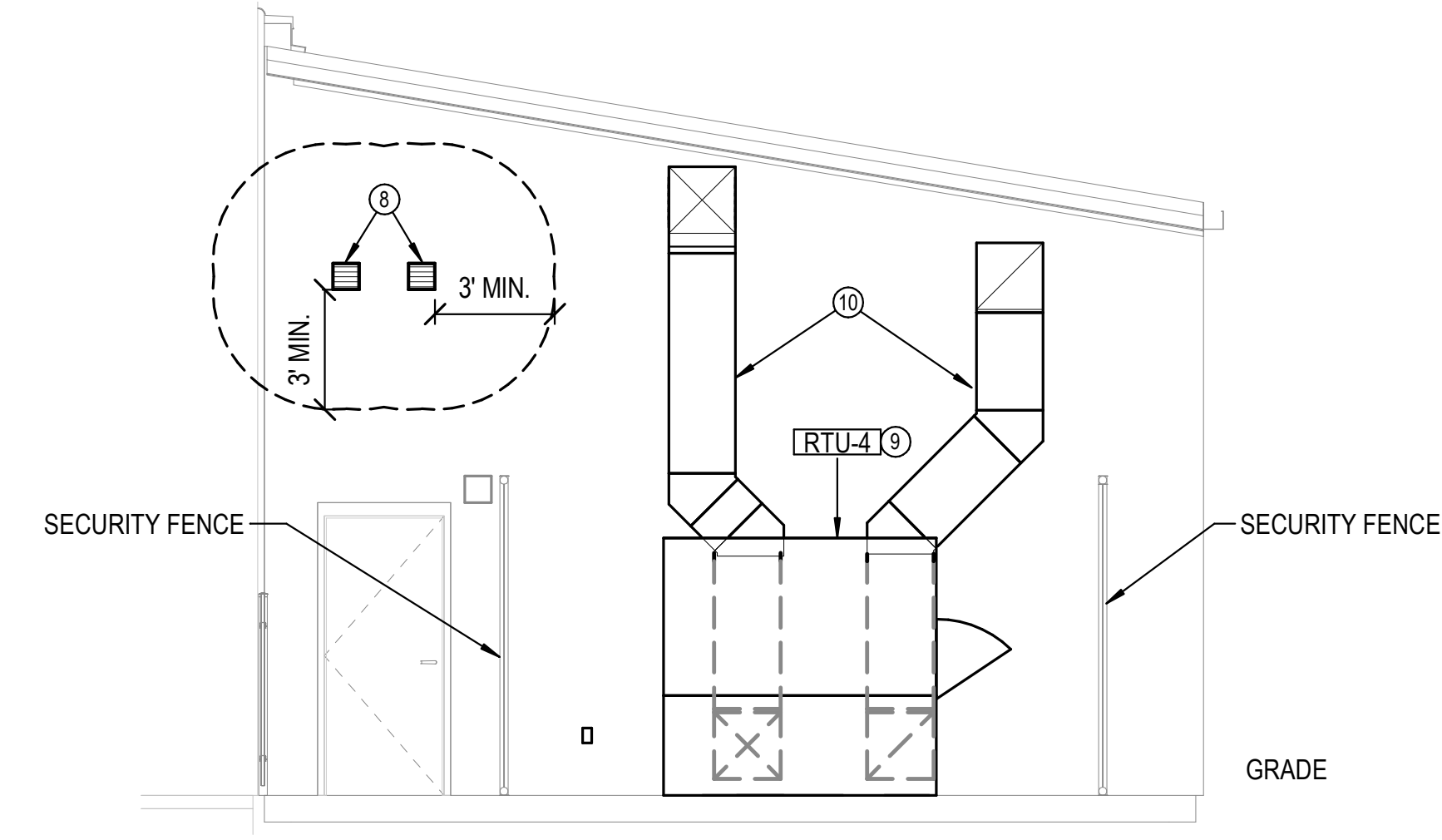


- KEYED NOTES FM2.1
1. PROVIDE LINED TRANSFER DUCT THROUGH WALL. SEE DETAIL. BOTTOM OF DUCT 14'-0" A.F.F.
  2. PROVIDE AND INSTALL ELECTRIC WALL HEATER. COORDINATE WITH GC FOR SURFACE MOUNTING ON BLOCK WALL. COORDINATE WITH EC FOR POWER.
  3. INSTALL RELOCATED INLINE EXHAUST FAN. SUPPORT WITH VIBRATION ISOLATION FROM STRUCTURE ABOVE. PROVIDE FLEXIBLE DUCT CONNECTION AT UNIT. COORDINATE WITH EC FOR POWER.
  4. PROVIDE AND INSTALL MOTORIZED COMBINATION LOUVER/DAMPER. COORDINATE WITH GC FOR BLOCK WALL PENETRATION. INTERLOCK PER SCHEDULE.
  5. INSTALL THERMOSTAT AT SIMILAR ELEVATION TO LIGHT SWITCHES.
  6. PROVIDE AND INSTALL EXHAUST FAN. SUPPORT FROM STRUCTURE ABOVE. EXTEND DISCHARGE DUCT TO EXTERIOR WALL CAP.
  7. HIGH EFFICIENCY TAKE-OFF WITH 2" STAND-OFF OPERATOR (TYP.).
  8. EXTEND 6" EXHAUST DUCT TO WALL CAP AT THIS LOCATION. ALL BUILDING PENETRATIONS SHALL BE SEALED WEATHER TIGHT. PROVIDE 3'-0" MINIMUM CLEARANCE FROM ALL DOORS AND WINDOWS.
  9. INSTALL ROOFTOP UNIT ON PREMANUFACTURED CURB ON REINFORCED CONCRETE PAD. SEE STRUCTURAL FOR PAD CONSTRUCTION. PROVIDE ALL SERVICE AND CODE-REQUIRED CLEARANCES. COORDINATE WITH E.C. FOR POWER CONNECTIONS. SEE PLUMBING FOR GAS PIPING.
  10. PROVIDE SIDEWALL SUPPORT FOR DUCTS RISING UP OUTDOORS TO ENTER BUILDING.
  11. BOTTOM OF DUCT 12'-2" A.F.F.
  12. BOTTOM OF DUCT 14'-0" A.F.F.

**A SOUTH LOCKER ROOM - HVAC PLAN**  
1/4" = 1'-0"



**B DUCT ELEVATION**  
1/4" = 1'-0"



**C RTU-4 ELEVATION**  
1/4" = 1'-0"

PHASE 8 INDOOR FACILITY AND STADIUM IMPROVEMENTS  
**STRYKER SPORTS**  
WICHITA, KANSAS

*Richard Ruppelt*  
11/23/21

©2021 MKEC Engineering All Rights Reserved. www.mkec.com These drawings and their contents, including, but not limited to, all concepts, designs, & ideas are the exclusive property of MKEC Engineering (MKEC), and may not be used or reproduced in any way without the express consent of MKEC.

**SOUTH LOCKER ROOM - HVAC PLANS**

PROJECT NO.	1701010567	
DATE	11-24-2021	
SCALE	AS NOTED	
DESIGNED	DRAWN	CHECKED
RLB	JAC	RLB

0	ISSUED FOR CONSTRUCTION	11-24-21
NO.	REVISION	DATE

SHEET NO. FM2.1