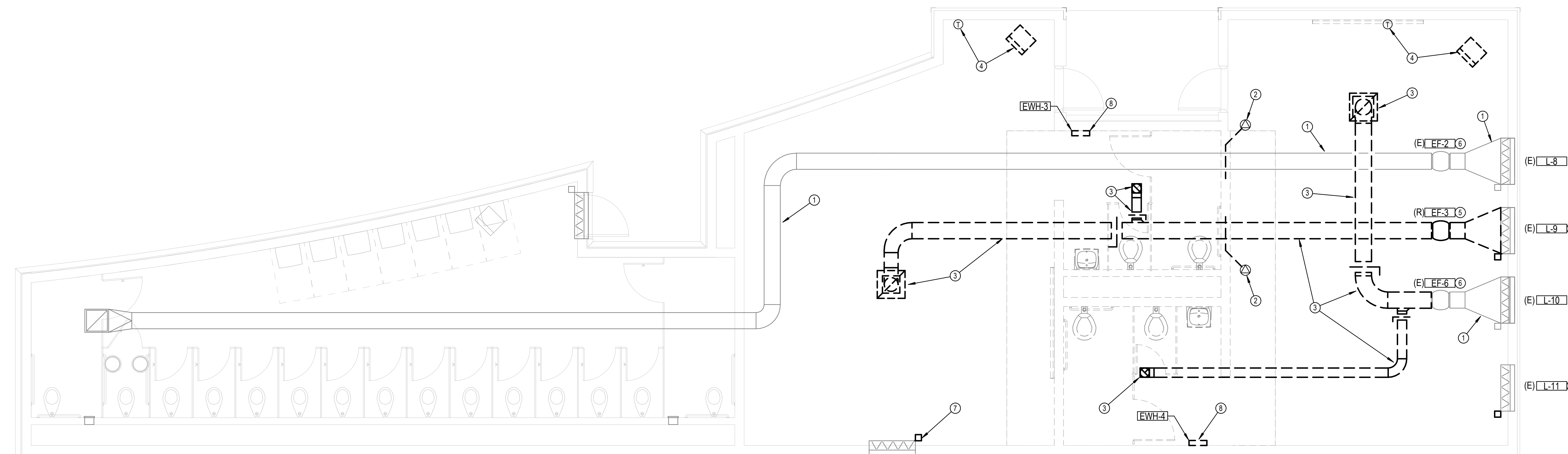
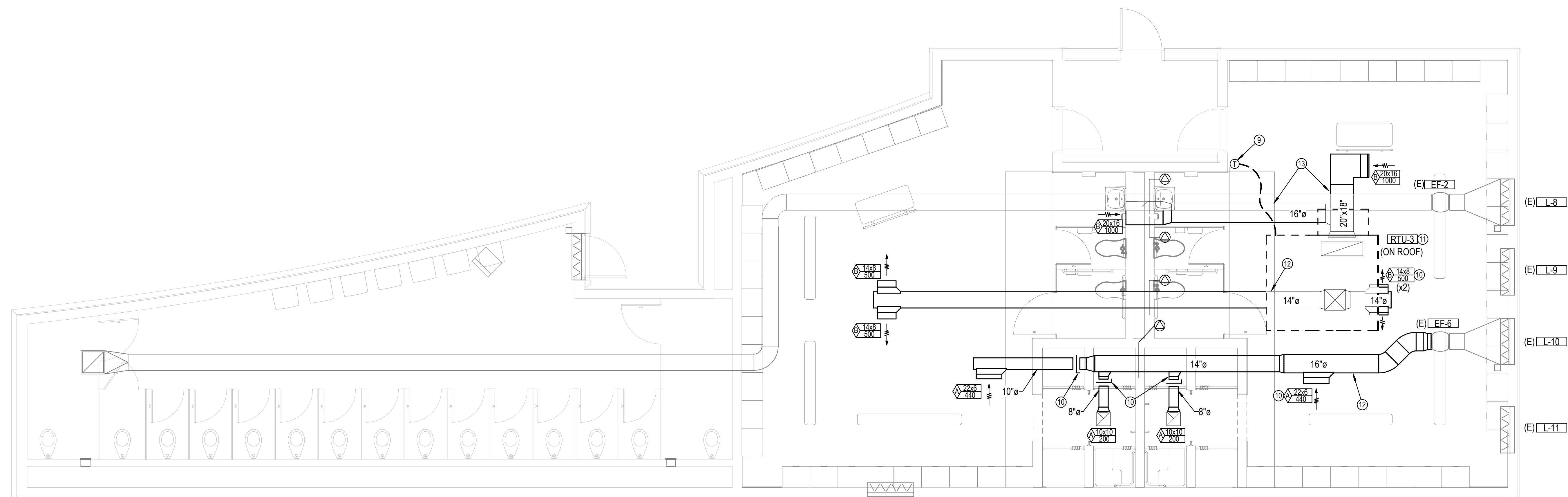


11/23/21 2:44:37 PM



- KEYED NOTES SM1.1
- EXISTING DUCTS TO REMAIN.
 - REMOVE EXISTING FIRE DAMPER.
 - REMOVE EXISTING DUCTS & DIFFUSERS AS INDICATED BY DASHED LINES.
 - REMOVE EXISTING ELECTRIC HEATER. COORDINATE WITH E.C. TO REMOVE POWER. REMOVE ASSOCIATED THERMOSTAT.
 - REMOVE & RELOCATE EXISTING EXHAUST FAN TO NEW LOCKER ROOM ADDITION. SEE PLAN 'C' ON SHEET M-102.
 - EXISTING FAN TO REMAIN.
 - REMOVE EXISTING DAMPER OPERATOR AT LOUVER TO REMAIN. PROVIDE INSULATED COVER AT REAR OF DAMPER.
 - REMOVE EXISTING WALL HEATER.
 - INSTALL THERMOSTAT AT SIMILAR ELEVATION TO LIGHT SWITCHES.
 - HIGH EFFICIENCY TAKE-OFF WITH 2" STAND-OFF OPERATOR (TYP.).
 - INSTALL ROOFTOP UNIT ON PREMANUFACTURED CURB ON EXISTING ROOF. COORDINATE WITH G.C. FOR ROOF PENETRATION. REMOVE ROOF DECK ONLY WHERE DUCT PENETRATIONS OCCUR. PROVIDE ALL SERVICE AND CODE REQUIRED CLEARANCES. COORDINATE WITH E.C. FOR POWER CONNECTIONS. COORDINATE WITH ROOFING CONTRACTOR TO PROVIDE WEATHER TIGHT ROOF PATCH AT NEW CURB.
 - BOTTOM OF DUCT 9'-10" A.F.F.
 - BOTTOM OF DUCT 8'-6" A.F.F.

A NORTH LOCKER ROOM - HVAC DEMO PLAN
1/4" = 1'-0" 0' 1' 2' 4' 8'



B NORTH LOCKER ROOM - HVAC IMPROVEMENT PLAN
1/4" = 1'-0" 0' 1' 2' 4' 8'

Patricia R. Burtlett
11/23/21

©2021 MKEC Engineering All Rights Reserved. www.mkec.com
These drawings and their contents, including, but not limited to, all concepts, designs, & data are the exclusive property of MKEC Engineering (MKEC), and may not be used or reproduced in any way without MKEC.

NORTH LOCKER ROOM - HVAC PLANS

PROJECT NO.	1701010567	
DATE	11-24-2021	
SCALE	AS NOTED	
DESIGNED	DRAWN	CHECKED
RLB	JAC	RLB

0	ISSUED FOR CONSTRUCTION	11-24-21
NO.	REVISION	DATE

SHEET NO.
SM1.1

BULK:3001010567:1003_StrykerRemodel170567_Stryker_Architects_MEP.rvt