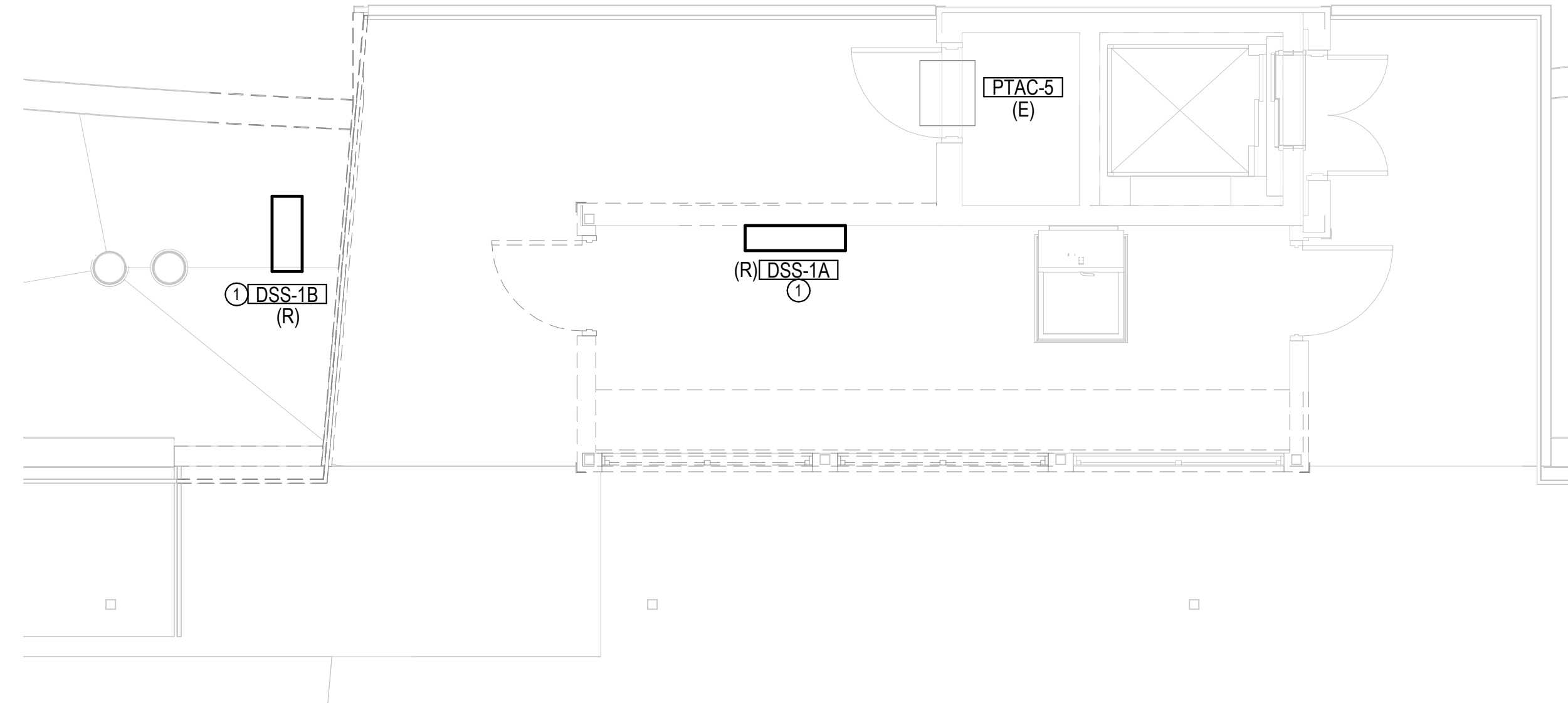
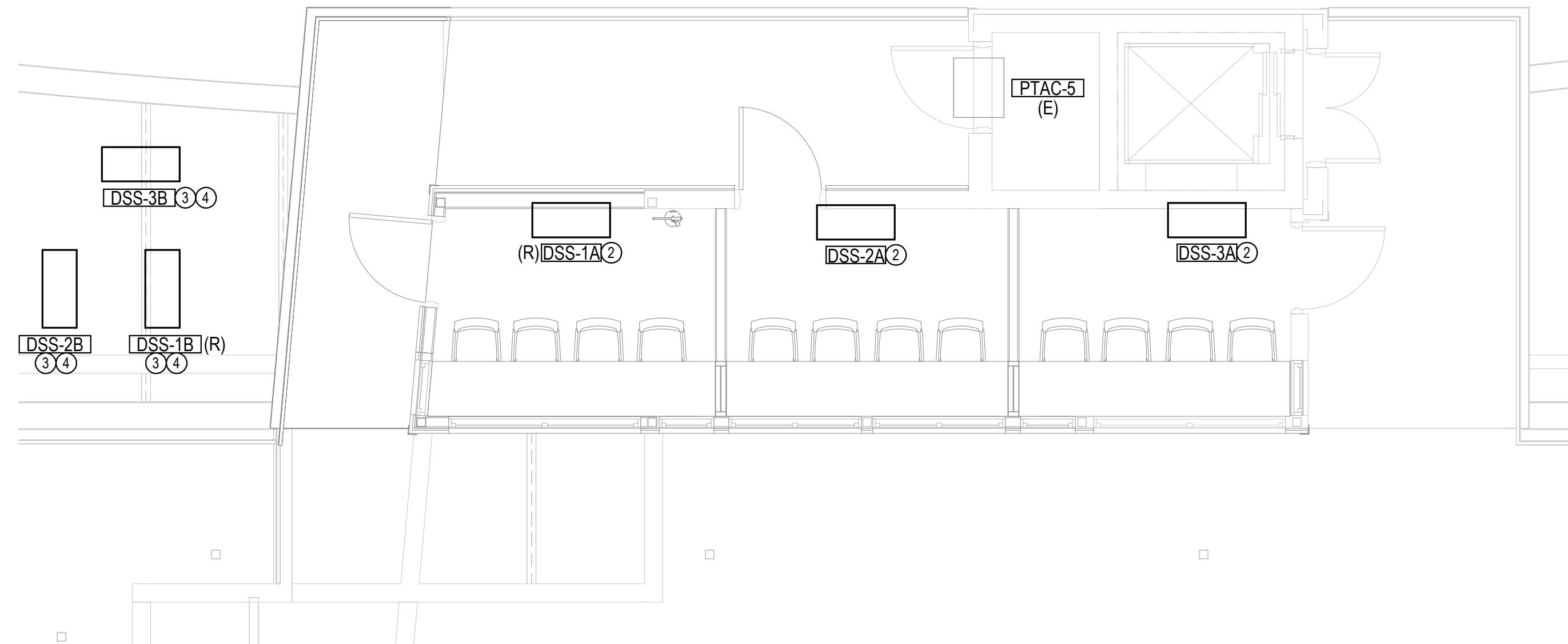


11/23/2021 2:46 PM



A PRESSBOX - HVAC DEMO PLAN
1/4" = 1'-0" 0 1 2 4 8

- KEYED NOTES SM1.2
1. REMOVE & RELOCATE EXISTING DUCTLESS SPLIT SYSTEM INDOOR AND OUTDOOR UNITS. SEE PLAN 'B' ON THIS SHEET FOR NEW INDOOR AND OUTDOOR UNIT LOCATIONS.
 2. PROVIDE AND INSTALL DUCTLESS SPLIT SYSTEM INDOOR UNIT ON WALL AS SHOWN. MOUNT UNIT AS HIGH AS PRACTICAL. COORDINATE INSTALLATION WITH OTHER TRADES. EXTEND 3/4" COPPER CONDENSATE DRAIN DOWN THROUGH FLOOR TO SPLASH BLOCK AT GRADE BELOW BLEACHERS.
 3. PROVIDE AND INSTALL DUCTLESS SPLIT SYSTEM OUTDOOR UNIT ON ROOF AS SHOWN. EXTEND REFRIGERANT PIPING AS NEEDED TO INDOOR UNIT. PROVIDE ROOF CURB.
 4. COORDINATE REFRIGERANT PIPING LENGTHS WITH ACTUAL PIPE ROUTING REQUIREMENTS FOR THIS INSTALLATION PRIOR TO PURCHASE OF EQUIPMENT. SEE PLAN B ON THIS SHEET FOR OUTDOOR UNIT LOCATION.



B PRESSBOX - HVAC IMPROVEMENT PLAN
1/4" = 1'-0" 0 1 2 4 8

Paul R. Rutledge
11/23/21
Professional Engineer
State of Kansas

©2021 MKEC Engineering All Rights Reserved. www.mkec.com These drawings and their contents, including, but not limited to, all concepts, designs, & ideas are the exclusive property of MKEC Engineering (MKEC), and may not be used or reproduced in any way without the express consent of MKEC.

PRESSBOX - HVAC PLANS

PROJECT NO.	1701010567	
DATE	11-24-2021	
SCALE	AS NOTED	
DESIGNED	DRAWN	CHECKED
RLB	JAC	RLB

0	ISSUED FOR CONSTRUCTION	11-24-21
NO.	REVISION	DATE

SHEET NO. SM1.2

BULK:3001010567:1003_StrykerRemodel170567_Stryker_Architects_MEP.rvt