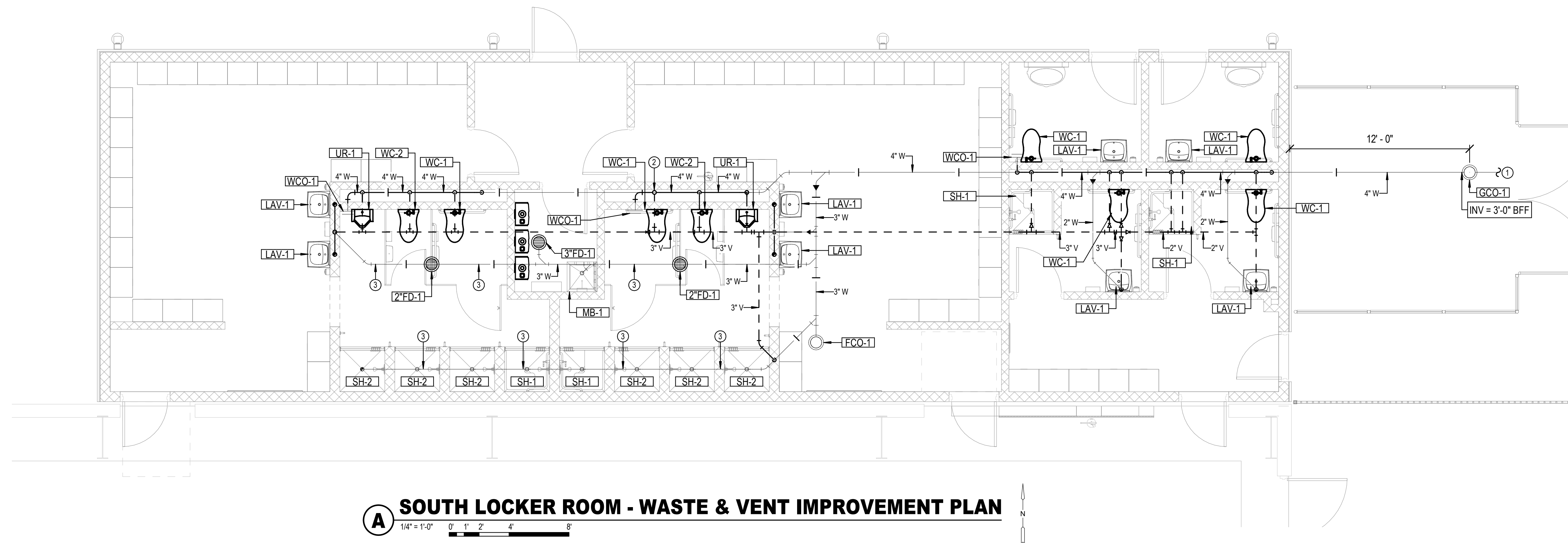
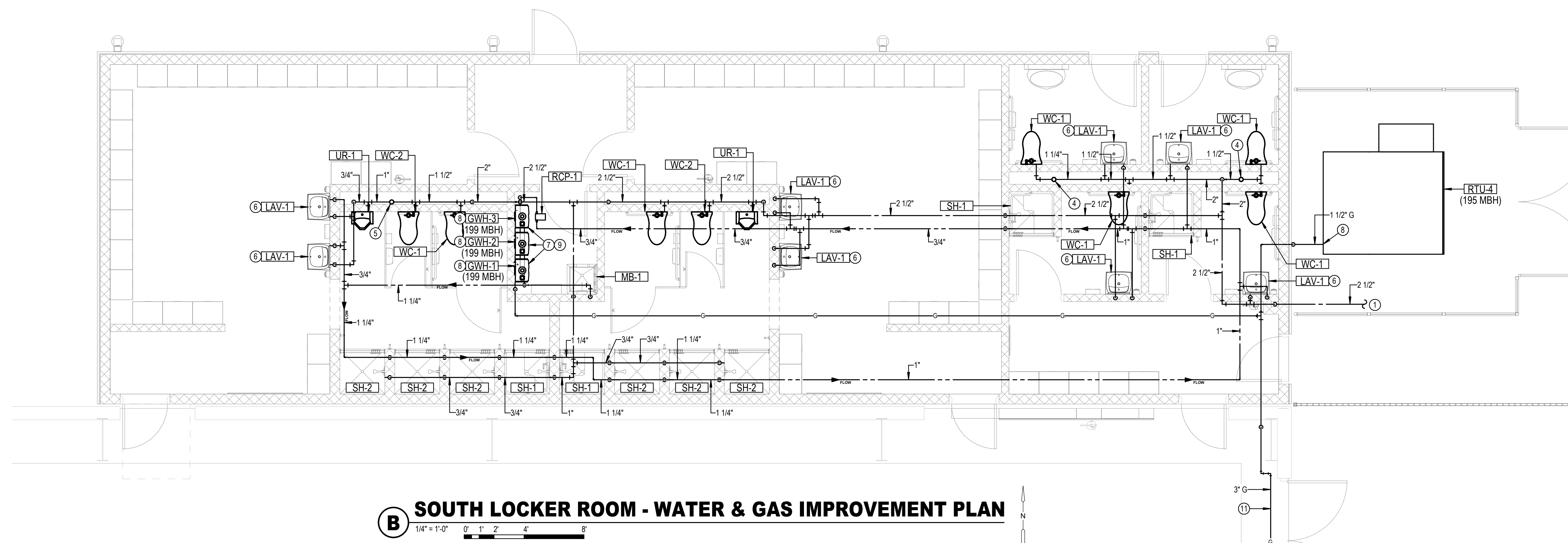


11/23/2021 3:16:39 PM



**A SOUTH LOCKER ROOM - WASTE & VENT IMPROVEMENT PLAN**  
1/4" = 1'-0" 0' 1' 2' 4' 8'

- KEYED NOTES**
1. SEE CIVIL PLANS FOR CONTINUATION.
  2. 3" VENT UP TO 3" VENT THRU ROOF.
  3. COMBINATION WASTE AND VENT PIPING.
  4. SHOCK STOP TYPE B.
  5. SHOCK STOP TYPE C.
  6. PROVIDE ASSE 1070 THERMOSTATIC MIXING VALVE. SET OUTLET TEMPERATURE AT 110°F MAXIMUM.
  7. SEE WATER HEATER DETAIL 9 ON SHEET P-301.
  8. PROVIDE SHUT-OFF VALVE, UNION, AND DIRT LEG AT EACH GAS CONNECTION TO EQUIPMENT.
  9. EXTEND FLUE AND COMBUSTION AIR PIPING THRU ROOF.
  10. CONNECT NEW 3" GAS PIPE TO EXISTING VERTICAL 5" GAS PIPE ON EXTERIOR OF BUILDING.
  11. BRACE NEW GAS PIPING AGAINST EXTERIOR WALL.



**B SOUTH LOCKER ROOM - WATER & GAS IMPROVEMENT PLAN**  
1/4" = 1'-0" 0' 1' 2' 4' 8'

*Handwritten signature*  
11/23/21

©2021 MKEC Engineering All Rights Reserved. www.mkec.com These drawings and their contents, including, but not limited to, all concepts, designs, & ideas are the exclusive property of MKEC Engineering (MKEC), and may not be used or reproduced in any way without the express consent of MKEC.

**SOUTH LOCKER RM - PLBG IMPROVEMENT PLANS**

PROJECT NO.	1701010567	
DATE	11-24-2021	
SCALE	AS NOTED	
DESIGNED	DRAWN	CHECKED
CWB	CWB	RLB

0	ISSUED FOR CONSTRUCTION	11-24-21
NO.	REVISION	DATE
SHEET NO.		
FP2.1		

BULK:3001010567-1003\_StrykerRemodel\_170567\_Stryker\_Architects\_MEP.rvt