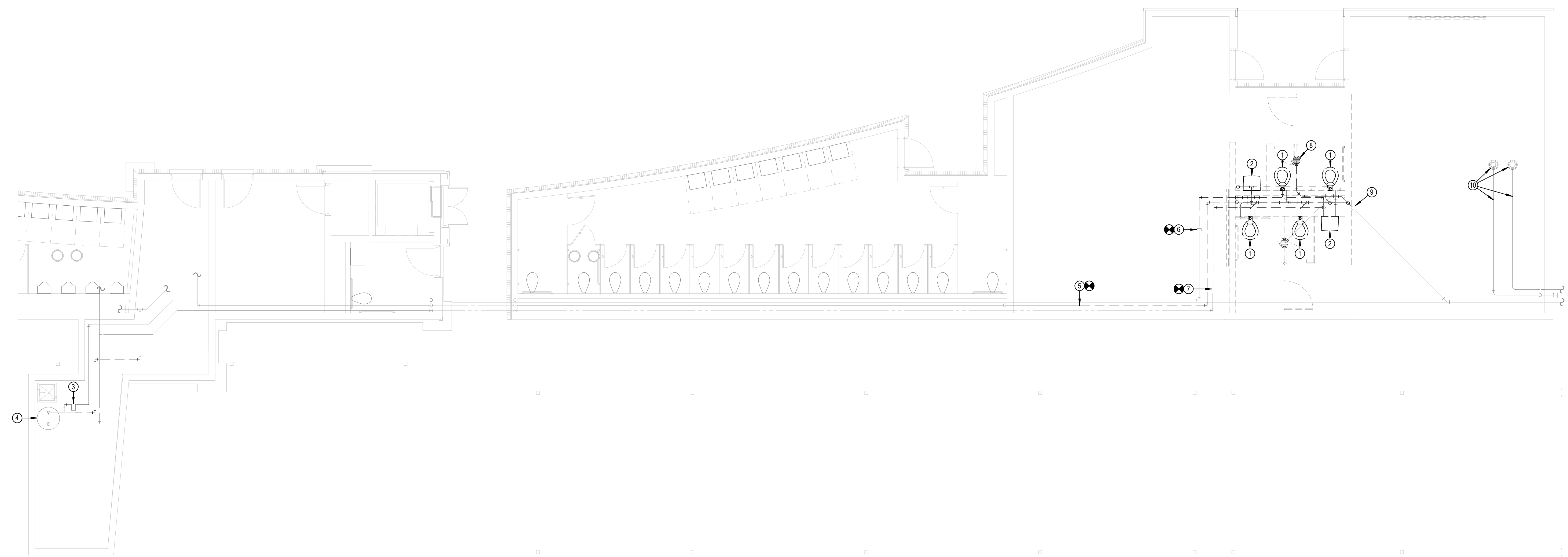
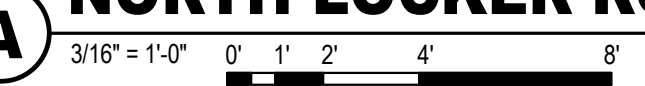


11/23/2021 2:43:07 PM

KEYED NOTES	
1.	REMOVE WATER CLOSET AND FLUSH VALVE, AND DEMOLISH ASSOCIATED WASTE AND VENT PIPING. SAVE WATER CLOSET AND FLUSH VALVE FOR RE-USE.
2.	REMOVE LAVATORY AND FAUCET, AND DEMOLISH ASSOCIATED WASTE AND VENT PIPING. SAVE LAVATORY AND FAUCET FOR RE-USE. PATCH AND REPAIR EXISTING FLOOR AS NECESSARY TO MATCH EXISTING CONDITIONS.
3.	RECIRCULATING PUMP TO BE RE-USED. SEE PLAN B ON SHEET P-201 FOR NEW LOCATION AND PIPING CONFIGURATION.
4.	EXISTING ELECTRIC WATER HEATER TO REMAIN.
5.	DEMOLISH 2" COLD WATER PIPING BACK TO THIS POINT AND CAP.
6.	DEMOLISH 3/4" HOT WATER RECIRC PIPING BACK TO THIS POINT AND CAP.
7.	DEMOLISH 1" HOT WATER PIPING BACK TO THIS POINT AND CAP.
8.	DEMOLISH EXISTING FLOOR DRAIN AND ASSOCIATED WASTE AND VENT PIPING.
9.	DEMOLISH EXISTING WASTE PIPING BACK TO THIS POINT AND CAP. PATCH AND REPAIR EXISTING FLOOR AS NECESSARY TO MATCH EXISTING CONDITIONS.
10.	EXISTING ROOF DRAINS AND STORM PIPING TO REMAIN.



A NORTH LOCKER ROOM - PLUMBING DEMO PLAN



Handwritten signature
11/23/21

©2021 MKEC Engineering All Rights Reserved. www.mkec.com
These drawings and their contents, including, but not limited to, all concepts, designs, & data are the exclusive property of MKEC Engineering (MKEC), and may not be used or reproduced in any way without the express consent of MKEC.

NORTH LOCKER ROOM - PLBG DEMO PLAN

PROJECT NO.	1701010567	
DATE	11-24-2021	
SCALE	AS NOTED	
DESIGNED	DRAWN	CHECKED
CWB	CWB	RLB

NO.	REVISION	DATE
0	ISSUED FOR CONSTRUCTION	11-24-21

SHEET NO.
SP1.1

BULK:20210108B21003_StrykerRemodel170567_Stryker-Addition_MEP.rvt