

**SOUTH LOCKER ROOM - ELECTRICAL PLANS**

PROJECT NO. 1701010567

DATE 11-24-2021

SCALE AS NOTED

DESIGNED DRAWN CHECKED

GAKH GAKH JRBW

0 ISSUED FOR CONSTRUCTION 11-24-21

NO. REVISION DATE

SHEET NO.

FE1.1

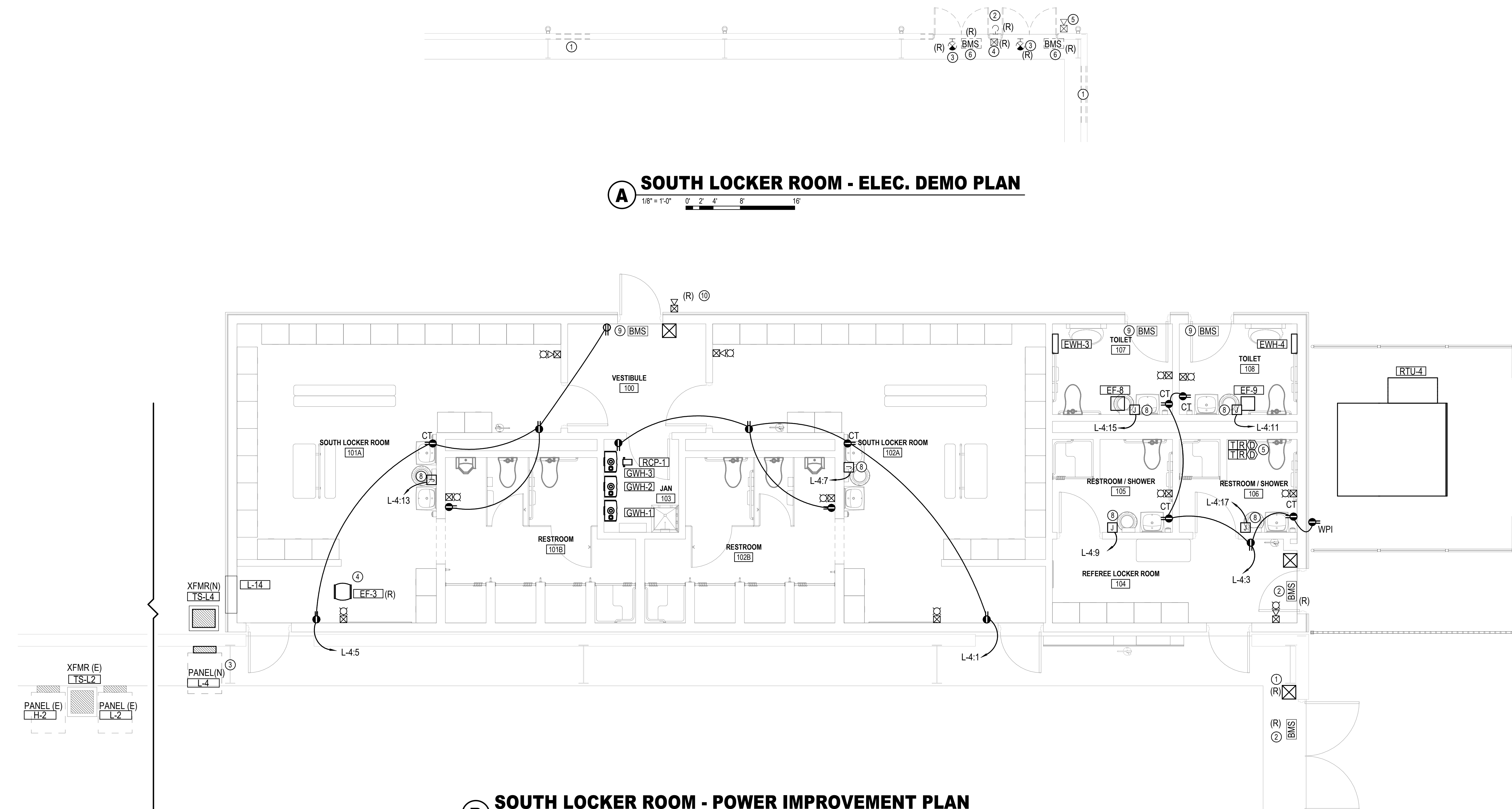
- DEMOLITION KEYED NOTES**
- RELOCATE ANY DEVICES IN WALL TO BE REMOVED.
  - RELOCATE WALL PACK. REFER TO IMPROVEMENT PLAN.
  - RELOCATE EXIT SIGN. REFER TO IMPROVEMENT PLAN.
  - RELOCATE MANUAL PULL STATION. REFER TO IMPROVEMENT PLAN.
  - RELOCATE HORN/SPEAKER. REFER TO IMPROVEMENT PLAN.
  - RELOCATE BALANCE MAGNETIC SWITCH. REFER TO IMPROVEMENT PLAN.

- KEYED NOTES**
- RELOCATE FIRE ALARM MANUAL PULL STATION.
  - RELOCATE BALANCE MAGNETIC SWITCH TO NEW DOOR. ROUTE 0.75°C. FROM DOOR FRAME TO SECURITY PANEL. COORDINATE WITH OWNER AND SECURITY VENDOR.
  - EXISTING PANELS L-2 AND H-2 LOCATED APPROXIMATELY 125' WEST OF THIS COLUMN ON NORTH WALL.
  - EXHAUST FAN TO BE RELOCATED FROM FOOTBALL LOCKER ROOM.
  - PROVIDE DUCT DETECTOR IN SUPPLY AND RETURN DUCT OF HVAC UNIT. PROVIDE RELAY TO INTERFACE WITH FIRE ALARM SYSTEM AND LOCAL TEST SWITCH.
  - RELOCATE EXIT SIGN TO ABOVE NEW DOOR. RECONNECT TO EXISTING CIRCUIT.
  - RELOCATE WALL PACK TO ABOVE NEW DOOR. RECONNECT TO EXISTING CIRCUIT.
  - PROVIDE POWER TO ELECTRIC HAND DRYER. COORDINATE ROUGH-IN REQUIREMENTS WITH MANUFACTURER.
  - ROUTE 0.75°C. FROM DOOR FRAME TO SECURITY PANEL FOR NEW DOOR CONTACT. COORDINATE WITH OWNER AND SECURITY VENDOR.
  - RELOCATE EXTERIOR HORN/SPEAKER.
  - SUSPEND FIXTURE TO 10'-0" AFF.
  - WALL MOUNT FIXTURE AT 96" AFF.
  - WALL MOUNT BOTTOM OF EXIT SIGN AT 6" ABOVE TOP OF DOOR FRAME.
  - SUSPEND FIXTURE TO 12'-0" AFF.

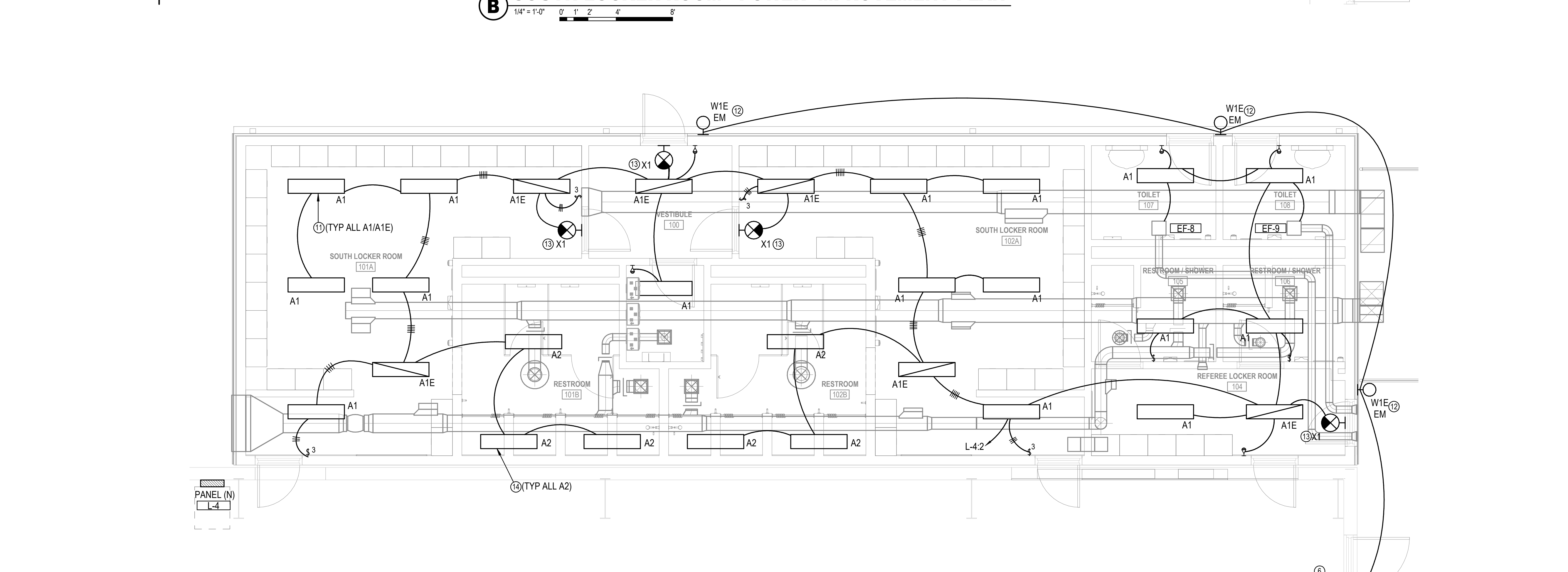
**LIGHTING CONTROLS SCHEDULE**

SYMB.	MANUFACTURER	MODEL	DESCRIPTION	TIME
⊕	WATTSTOPPER	DW-100-W	DUAL TECHNOLOGY OCCUPANCY SENSOR SWITCH.	30

**A SOUTH LOCKER ROOM - ELEC. DEMO PLAN**



**B SOUTH LOCKER ROOM - POWER IMPROVEMENT PLAN**



**C SOUTH LOCKER ROOM - LIGHTING IMPROVEMENT PLAN**

