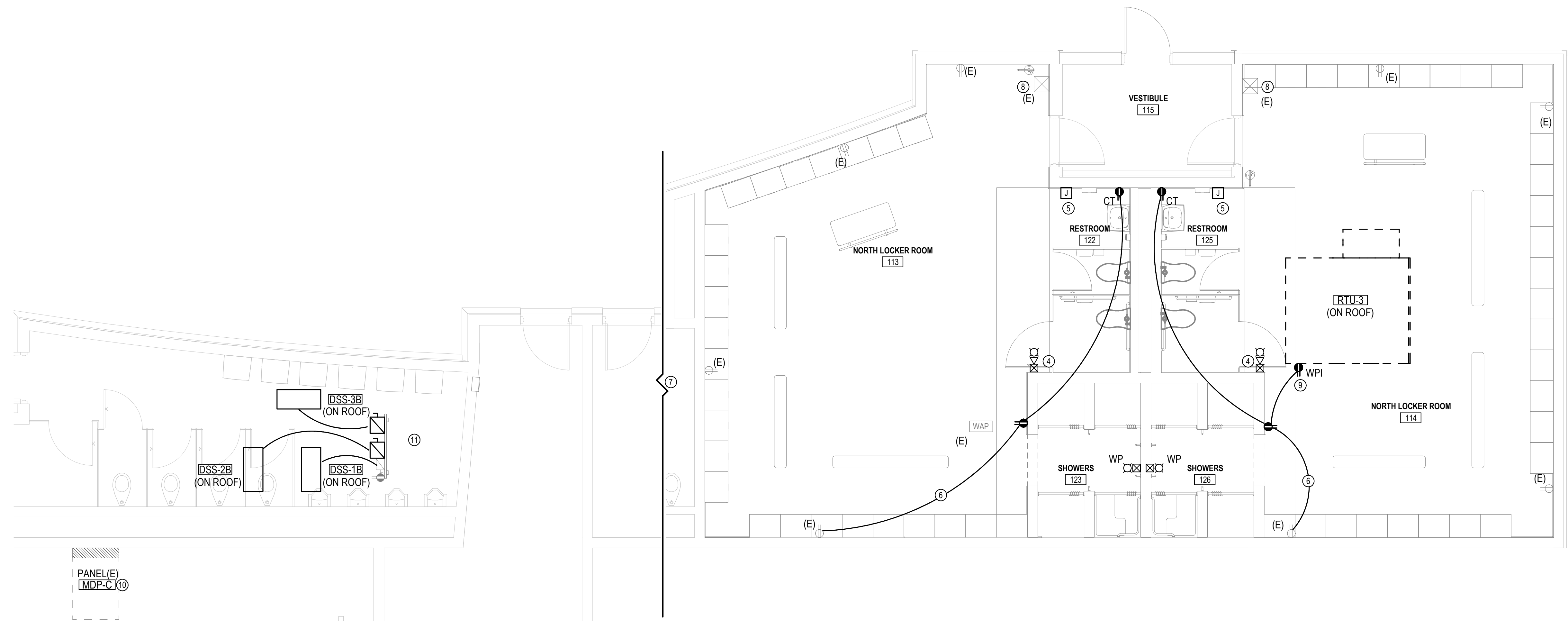
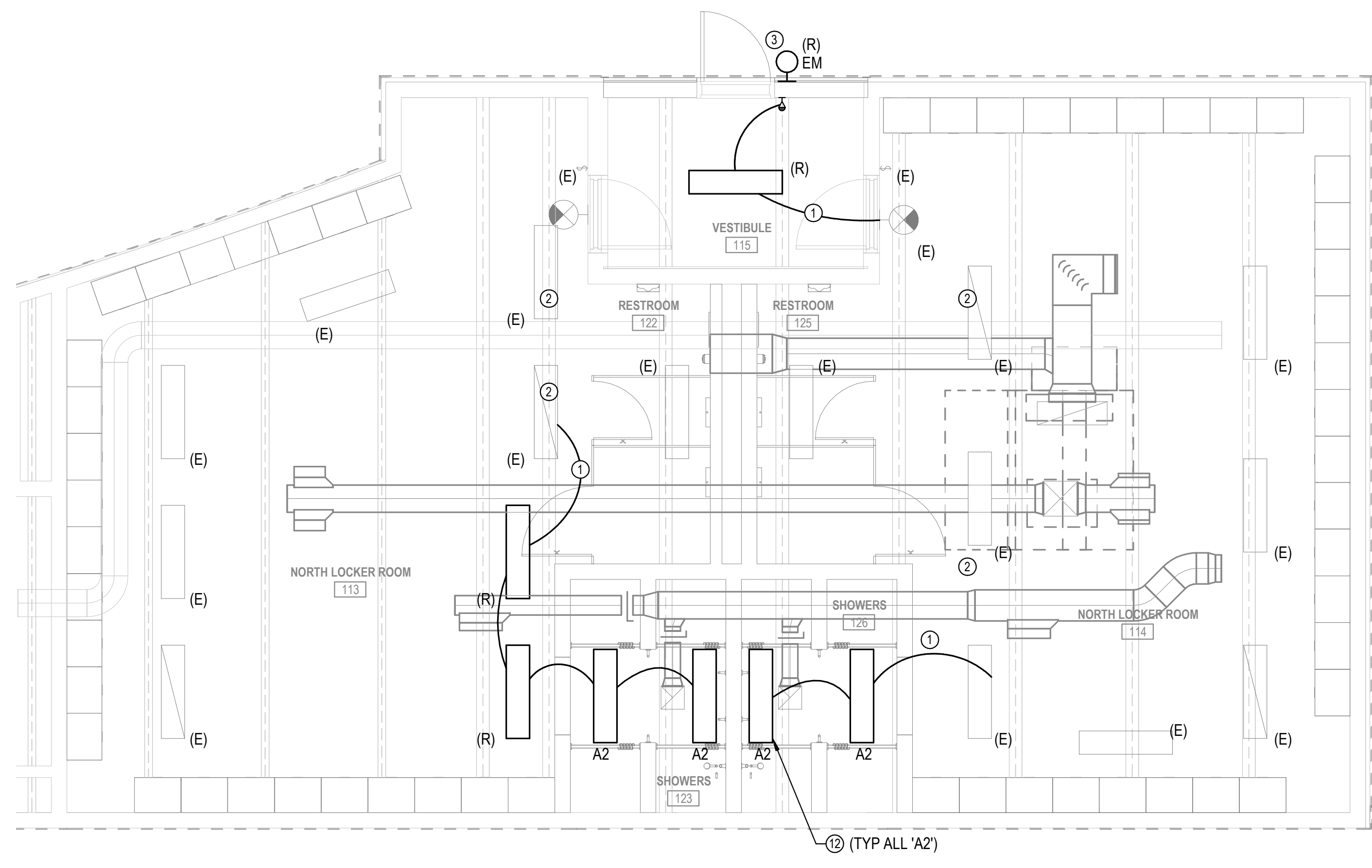
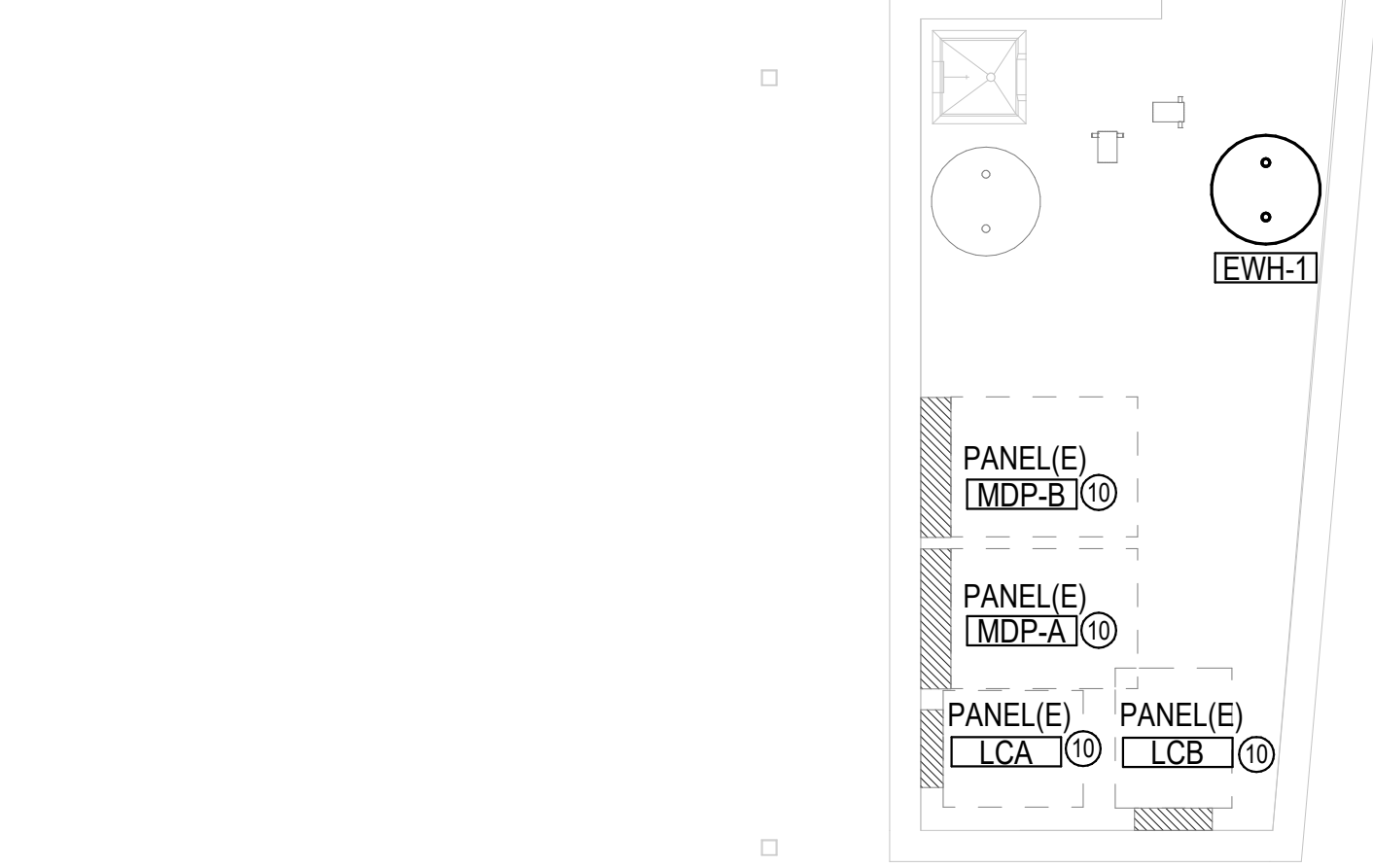


11/23/2021 9:06:13 PM



- KEYED NOTES**
- CONNECT TO EXISTING LIGHTING CIRCUIT IN ROOM
  - COORDINATE LOCATION OF EXISTING LIGHTS IN ROOM WITH NEW DUCTWORK, RESUPPORT AND RECONNECT AS NECESSARY.
  - RELOCATE EXISTING WALL PACK TO ABOVE NEW DOOR. RECONNECT TO EXISTING CIRCUIT.
  - RELOCATE HORN/STROBE.
  - RELOCATE EXISTING HAND DRYER. RECONNECT TO EXISTING CIRCUIT.
  - CONNECT NEW DEVICES TO EXISTING CIRCUIT.
  - BREAK OF APPROXIMATELY 75'-0".
  - ADJUST LOCATION OF EXISTING MANUAL PULL STATION AS REQUIRED TO ACCOMMODATE NEW LOCKERS. MAINTAIN NO GREATER THAN 5'-0" DISTANCE FROM LATCH SIDE OF DOOR.
  - PROVIDE GFCI RECEPTACLE ON ROOF WITH WHILE-IN-USE ENCLOSURE.
  - EXISTING PANEL TO REMAIN.
  - EXISTING STRUT RACK WITH (1) DISCONNECT AND GFCI RECEPTACLE. RELOCATE STRUT STAND AS NECESSARY TO ACCOMMODATE NEW OUTDOOR UNITS. PROVIDE ADDITIONAL STRUT AS REQUIRED FOR NEW UNIT DISCONNECTS.
  - SUSPEND FIXTURE TO 10'-0" AFF.

**A NORTH LOCKER ROOM - POWER IMPROVEMENT PLAN**  
1/4" = 1'-0" 0' 1' 2' 4' 8'



**B FOOTBALL LOCKER ROOM - LIGHTING IMPROVEMENT PLAN**  
1/4" = 1'-0" 0' 1' 2' 4' 8'

©2021 MKEC Engineering All Rights Reserved. www.mkec.com These drawings and their contents, including, but not limited to, all concepts, designs, & data are the exclusive property of MKEC Engineering (MKEC), and may not be used or reproduced in any way without the express consent of MKEC.

**NORTH LOCKER ROOM - ELEC. IMPROVEMENT PLANS**

PROJECT NO.	1701010567	
DATE	11-24-2021	
SCALE	AS NOTED	
DESIGNED	DRAWN	CHECKED
GAKH	GAKH	JRBW

ISSUED FOR CONSTRUCTION	11-24-21	
NO.	REVISION	DATE

SHEET NO. SE2.1



B:\1701010567\170567\_Stryker\Addition\_MEP.rvt