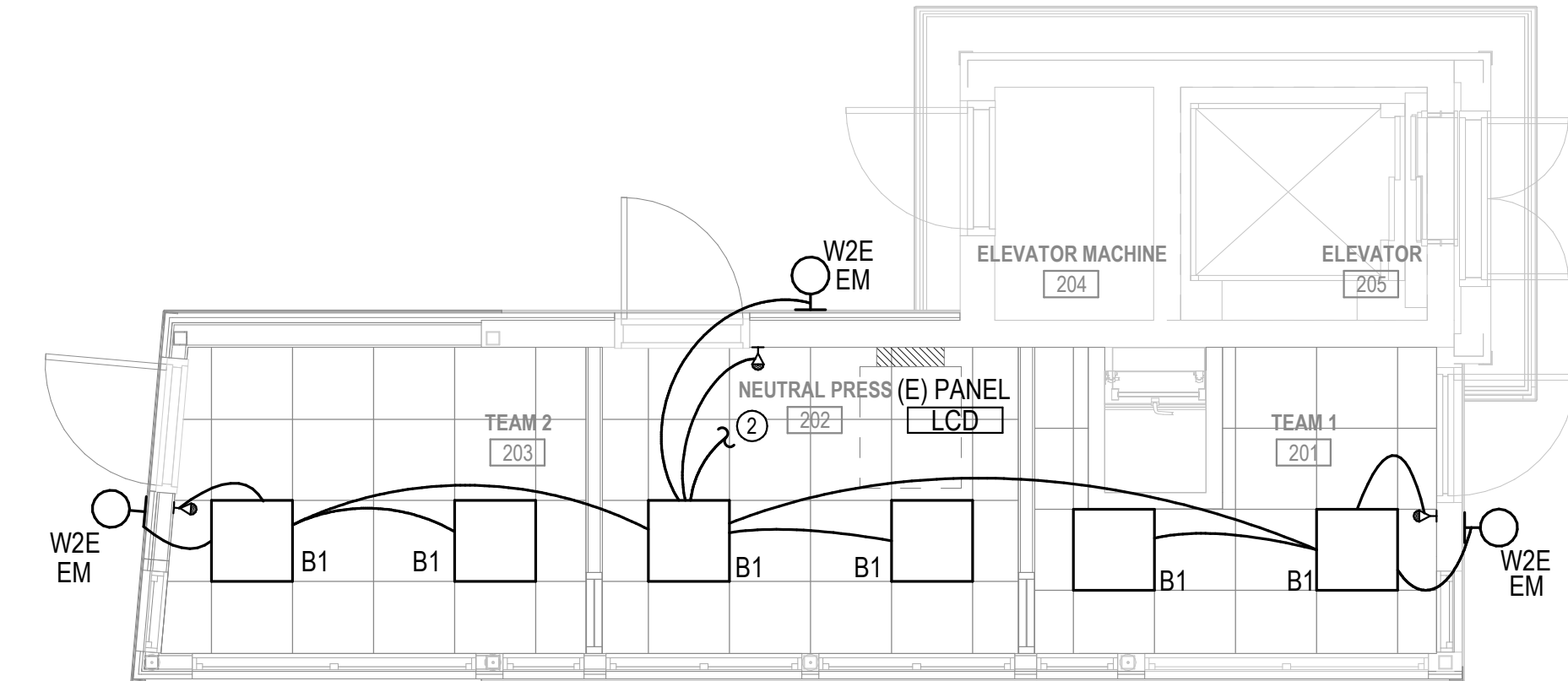


A PRESSBOX - POWER IMPROVEMENT PLAN
1/4" = 1'-0" 0' 1' 2' 4' 8'



B PRESSBOX - LIGHTING IMPROVEMENT PLAN
1/4" = 1'-0" 0' 1' 2' 4' 8'

- KEYED NOTES**
- EXISTING PANEL TO REMAIN.
 - CREATE NEW SWITCHED CIRCUITS FROM EXISTING LIGHTING CIRCUIT IN AREA.
 - CONNECT NEW DEVICES TO EXISTING CIRCUIT.
 - RELOCATE LOUDSPEAKER. REFER TO EXISTING PLANS.
 - RELOCATE NETWORK RACK. REFER TO EXISTING PLANS.
 - RELOCATE FIRE ALARM ANNUNCIATOR PANEL ABOVE RELOCATED NETWORK RACK. REFER TO EXISTING PLANS.
 - INSTALL USB TYPE DEVICE IN WIREMOLD 3000 SERIES RACEWAY AT 2'-0" OC, CENTERED ON WALL. MOUNT RACEWAY TO WINDOW MULLION. PROVIDE ALL NECESSARY COMPONENTS FOR A COMPLETE INSTALLATION.

COMMUNICATION/SECURITY SYMBOLS LEGEND

SYMB.	DESCRIPTION
▽	VOICE/DATA OUTLET:
▽	EACH VOICE/DATA OUTLET LOCATION WILL REQUIRE 4X4 SQUARE JUNCTION BOX WITH SINGLE GANG MUD RING AND 0.75" EMT STUBBED ABOVE THE CEILING. TURN CONDUIT 90° ABOVE CEILING. INSTALL PULL CORD AND INSULATED BUSHING FOR DATA/VOICE CABLE. CABLE AND TERMINATIONS SHALL BE PROVIDED AND INSTALLED BY SINGLE SOURCE CONTRACTOR PER SPECIFICATIONS. PROVIDE # OF DROPS PER EACH PLAN LOCATION.

EXISTING

PANEL: LCD (E)		BRANCH PANELBOARD - NORMAL POWER									
LOCATION: NEUTRAL PRESS 202		VOLTAGE: 120/240		A.I.C.: 3000		LOAD TYPE:					
FED FROM: MDP-C		PHASE: 1		MAINS: 400 A		L=LIGHTING, R=RECEPTACLE, M=MOTORS,					
MOUNTING: Surface		WIRES: 3		M.C.B.: 300 A		Ho=HOSPITAL, K=KITCHEN, H=HEAT, M=MISC					
ENCLOSURE: Type 1											
CKT	LOAD DESCRIPTION	TRIP	POLE	TYPE	A	B	TYPE	POLE	TRIP	LOAD DESCRIPTION	CKT
1	PRESSBOX RCPTS	20 A	1	--	0	0	--	1	20 A	PRESSBOX LTS AND RCPTS	2
3	EW-3	15 A	2	--	0	0	--	1	15 A	EF-3	4
5	EW-4	15 A	2	--	0	0	--	1	15 A	EF-6	6
7	EW-4	15 A	2	--	0	0	--	2	15 A	EW-2	8
9	EUH-1	80 A	2	--	0	0	--	1	15 A	EF-4	10
11	EUH-1	80 A	2	--	0	0	--	1	15 A	EF-4	12
13	AMP RACK RCPT	20 A	1	--	0	0	--	2	15 A	PTAC-4	14
15	MACHINE RM	20 A	1	--	0	0	--	1	20 A	AMP RACK RCPT	16
17	EUH-5	80 A	2	--	0	0	--	2	20 A	AMP RACK RCPT	18
19	ROOF RCPTS	20 A	1	--	0	0	--	2	30 A	PTAC-5	20
21	FACP	20 A	1	--	0	0	--	2	30 A	PTAC-5	22
23	AMP RACK RCPT	20 A	1	--	0	0	--	1	20 A	L-6, L-8 CONTROL	24
25	ELEVATOR LIGHT	20 A	1	--	0	0	--	1	20 A	L-7, L-9 CONTROL	26
27	SCOREBOARD CONTROLLER	20 A	1	--	0	0	--	1	20 A	L-10, L-11 CONTROL	28
29	REF RCPTS	20 A	1	--	0	0	--	1	20 A	DSS-1A/1B	30
31	SECURITY PANEL	20 A	1	--	0	0	--	2	30 A	EXT RCPT	32
33	HAND DRYER	20 A	1	--	0	0	--	1	20 A	Spare	34
35	HAND DRYER	20 A	1	--	0	0	--	1	20 A	Spare	36
37	Spare	20 A	1	--	0	0	--	1	20 A	Spare	38
39		20 A	1	--	0	0	--	1	20 A		40
41		20 A	1	--	0	0	--	1	20 A		42

NOTES:
1. EXISTING PANEL LOADS FOR REFERENCE.

IMPROVEMENT

PANEL: LCD		BRANCH PANELBOARD - NORMAL POWER									
LOCATION: NEUTRAL PRESS 202		VOLTAGE: 120/240		A.I.C.: 3500		LOAD TYPE:					
FED FROM: MDP-C		PHASE: 1		MAINS: 400 A		L=LIGHTING, R=RECEPTACLE, M=MOTORS,					
MOUNTING: Surface		WIRES: 3		M.C.B.: 300 A		Ho=HOSPITAL, K=KITCHEN, H=HEAT, M=MISC					
ENCLOSURE: Type 1											
CKT	LOAD DESCRIPTION	TRIP	POLE	TYPE	A	B	TYPE	POLE	TRIP	LOAD DESCRIPTION	CKT
1	PRESSBOX RCPTS	20 A	1	--	0	0	--	1	20 A	PRESSBOX LTS AND RCPTS	2
3	DSS-2A/2B (2)	15 A	2	M	840	0	--	1	15 A	R TEAM 1 201 (3)	4
5	DSS-3A/3B (2)	15 A	2	M	840	0	--	2	15 A	EF-6	6
7	R NEUTRAL PRESS 202 (3)	20 A	1	R	840	0	--	1	15 A	EW-2	8
9	R TEAM 2 203 (3)	20 A	1	R	720	0	--	1	15 A	EF-4	10
11	AMP RACK RCPT	20 A	1	--	0	0	--	2	15 A	PTAC-4	12
13	MACHINE RM	20 A	1	--	0	0	--	1	20 A	AMP RACK RCPT	14
15	Spare	80 A	2	--	0	0	--	2	20 A	AMP RACK RCPT	16
17	ROOF RCPTS	20 A	1	--	0	0	--	2	30 A	PTAC-5	18
19	FACP	20 A	1	--	0	0	--	2	30 A	PTAC-5	20
21	AMP RACK RCPT	20 A	1	--	0	0	--	1	20 A	L-6, L-8 CONTROL	22
23	ELEVATOR LIGHT	20 A	1	--	0	0	--	1	20 A	L-7, L-9 CONTROL	24
25	SCOREBOARD CONTROLLER	20 A	1	--	0	0	--	1	20 A	L-10, L-11 CONTROL	26
27	REF RCPTS	20 A	1	--	0	0	--	1	20 A	DSS-1A/1B	28
29	SECURITY PANEL	20 A	1	--	0	0	--	2	30 A	EXT RCPT	30
31	HAND DRYER	20 A	1	--	0	0	--	1	20 A	Spare	32
33	HAND DRYER	20 A	1	--	0	0	--	1	20 A	Spare	34
35	Spare	20 A	1	--	0	0	--	1	20 A		36
37		20 A	1	--	0	0	--	1	20 A		38
39		20 A	1	--	0	0	--	1	20 A		40
41		20 A	1	--	0	0	--	1	20 A		42

NOTES:
1. EXISTING PANEL LOADS SHOWN FOR REFERENCE.
2. CONNECT NEW LOAD TO EXISTING BREAKER.
3. PROVIDE NEW BREAKER AS SCHEDULED.

LCD LOAD CALCULATION

EXISTING LOAD PER PHASE 3/4 DRAWINGS	60.9 KW
REMOVED LOAD (ELECTRIC UNIT HEATERS)	33.8 KW
ADDED LOAD	5.9 KW
NEW TOTAL LOAD (KW)	33 KW
NEW TOTAL LOAD (AMPS)	137.5 A
REMAINING SPARE CAPACITY (300A MCB)	162.5 A