

# GENERAL NOTES:

- The Contractor shall comply with all applicable safety regulations. All construction shall be completed following current City Standard Specifications and Special Provisions.
- Contractor will be required to provide notice to utility companies a minimum of seventy-two (72) hours prior to any excavation, as follows:  
Kansas One-Call 687-2470  
The Contractor must notify the following in case of an emergency:  
AT&T 1-800-246-8464  
Black Hills Energy 1-800-694-8989  
City of Wichita Water & Sewer 1-316-219-8921  
City of Wichita Stormwater 1-316-268-4090  
City of Wichita Traffic 1-316-268-4034  
Cox Communications 1-888-249-3530  
Kansas Gas Service 1-888-482-4950  
Energy 1-800-544-4857
- Utility service lines, poles, etc. are to be adjusted as necessary by others prior to construction unless the plans specifically call for their adjustment by the Contractor or unless the plans specifically identify a utility to be adjusted by its owner during construction. Existing utilities and their location, as shown on the plans, represent the best information obtainable for design. The Contractor will be required to work around existing utilities within the right-of-way which do not conflict with proposed construction.
- Rubble from the removal of miscellaneous structures and excess excavation which is to be wasted shall be disposed of on sites to be provided by the Contractor. These sites shall be approved by the Engineer as to suitability, appearance and site location. Locations, in the opinion of the Engineer, that will leave an unsightly appearance will not be approved. All disposal sites must be approved by the Kansas Department of Health and Environment. Material either stockpiled or disposed of in a flood plain will require a Kansas State Board of Agriculture permit. Any material dumped in waters of the United States or wetlands is subject to U.S. Corps. of Engineers permitting regulations. Any material buried or stockpiled beyond approved construction limits will require additional archaeological investigations unless buried in a previously approved borrow location.
- Trees and shrubs in public right-of-way which are in direct conflict with proposed new construction shall be removed by the Contractor with the City Engineer's approval. Trees and shrubs which are not in direct conflict with proposed new construction shall be saved and protected from damage.
- The Contractor shall give all property owners and/or tenants of developed property abutting the construction of this project a minimum of ten (10) days notice prior to start of construction.
- The Contractor shall be responsible for preserving property irons. The Contractor will be required to re-establish any property irons which are damaged or destroyed by his construction operations. Such irons shall be re-established by a licensed land surveyor in accordance with state laws
- All elevations shown are NAVD88.
- All stubs and capped pipes shall be located with green plastic tape in the same manner as risers.
- Connecting to Existing Manholes:  
Prior to laying sewer lines using existing stubs in existing manholes, the Contractor shall expose and verify the elevation, grade and alignment of existing stubs and notify the Engineer of any deviation from the plans. Where the stub is unusable due to elevation grade or alignment, the Contractor shall remove the stub and plug the hole, and reshape the existing manhole invert to provide smooth flow. Where connection to an existing manhole that does not have an existing stub, the Contractor shall core cut into existing manhole wall to make connection using approved water stop gasket, and reshape the existing manhole invert to provide smooth flow. The cost of connect to existing manholes is incidental to the project.
- Contractor shall limit the extent of trench open overnight and weekends to less than 50 feet.
- Contractor shall provide positive drainage away from all manhole covers.
- The Contractor shall prevent any construction debris from entering the existing sanitary sewer during construction.
- The Contractor shall protect from damage and support existing utilities through construction as approved by the utility owner and the Engineer at the contractor's expense.
- Contractor shall grade around exposed manholes at a 1:1 slope. Manholes set lower than existing grade shall have a 9" berm constructed around manhole to prevent infiltration into sanitary sewer system. Cost of dirt, labor, equipment, etc. to be incidental to cost of manhole. Easements shall be graded with the street improvement project as part of the mass grading plan.
- All areas disturbed during construction are to be seeded as follows:  
Seed -- Rye grass; 5 lbs./1000 Sq. Ft.  
All costs associated with seeding including mobilization, preparation of ground, seeding, fertilizing, mulching, etc. shall be included in the L.S. bid item "Seeding".
- All existing and proposed erosion control measures including silt fencing, erosion control mat, straw bales, inlet barriers, and const. entrance shall be maintained throughout construction by the contractor and until project is accepted by the City of Wichita. The on-site engineer shall complete weekly reports on the status of erosion control measures. The contractor shall be required to comply with maintenance and/or replacement of erosion control measures as determined by the on-site engineer until project is accepted by City of Wichita. Maintenance and/or replacement of erosion control measures to be paid by L.S. bid item "Maintain Existing BMPs".
- All excess excavation shall remain on-site and shall be stockpiled or spread at a location determined by the engineer.
- The developer for this project is Jay W. Russell, P.O. Box 75337, Wichita, KS 67272 (316)990-2105.
- All costs associate with dewatering during construction shall be included in lump sum bid item "Dewatering".

## Benchmarks

BM #1: "□" Center of storm water sewer caulk, west side of Meridian, 22.4' S. & 30.5' E. of the SE Cor., Lot 1, Block D, Northgate 4th Addition.  
Elev. = 1334.49 (NAVD88)

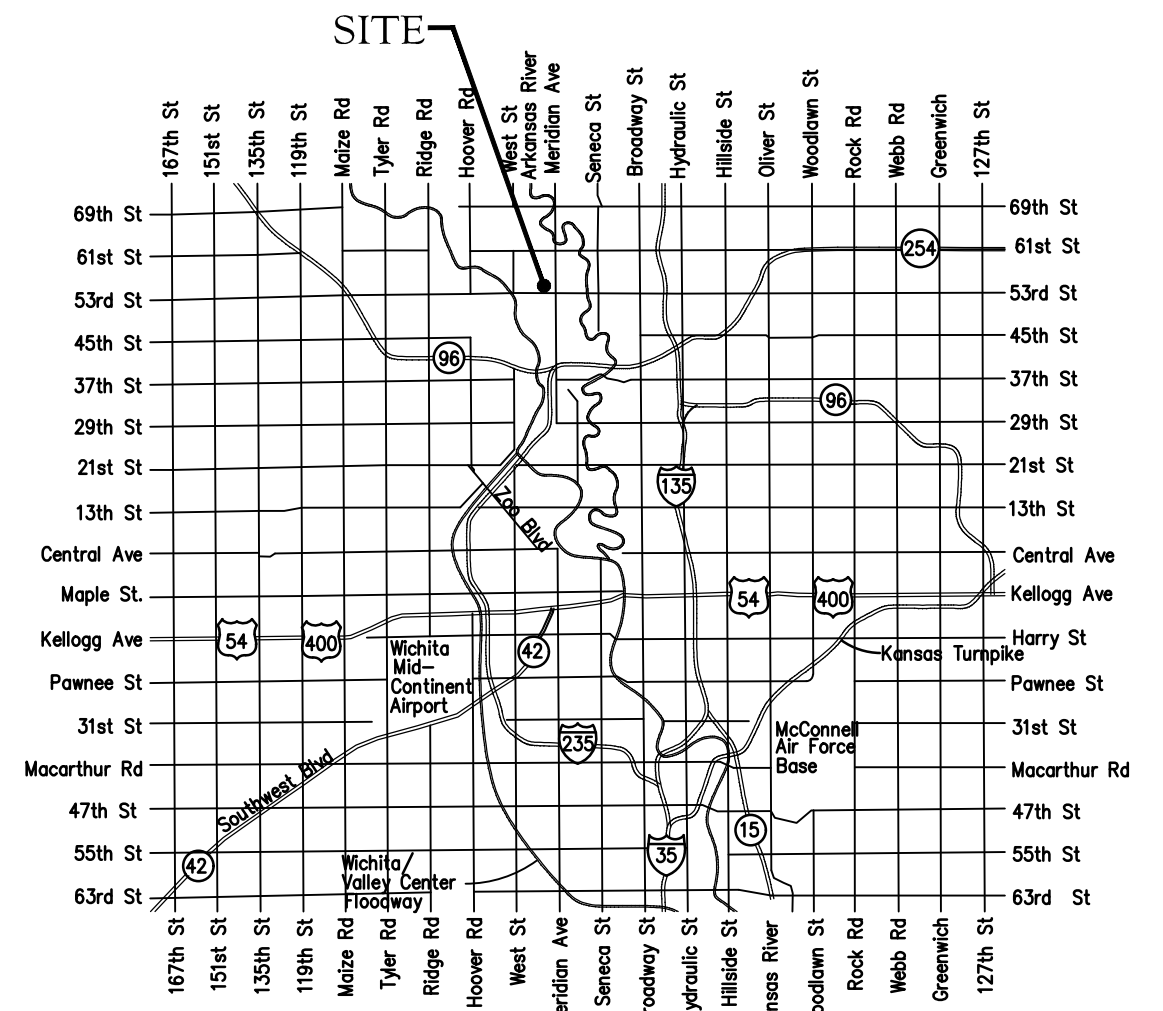
BM #2: BM Disk, top of curb, 14.8' W. & 0.7' N. of the SW Cor., Lot 10, Block D, Northgate 4th Addition.  
Elev. = 1337.35 (NAVD 88)

# SANITARY SEWER IMPROVEMENTS to serve NORTHGATE 5TH ADD. - PH. I

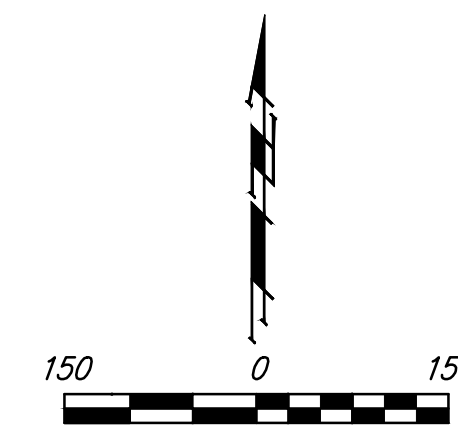
## CITY OF WICHITA, KANSAS

Gary Janzen, P.E. City Engineer  
Project Number 468-2021-003123  
Org Code 47264021  
Munis Number E1036

Mies Construction - Contractor  
K. Kerns - City of Wichita, Field Project Engineer  
R. Carillo - City of Wichita, Inspector  
As-built REVISED  
Stubs & Risers  
Release Date (for connection purposes only): 2/9/2022  
Completion Date:  
pdf: apr 3/1/2022

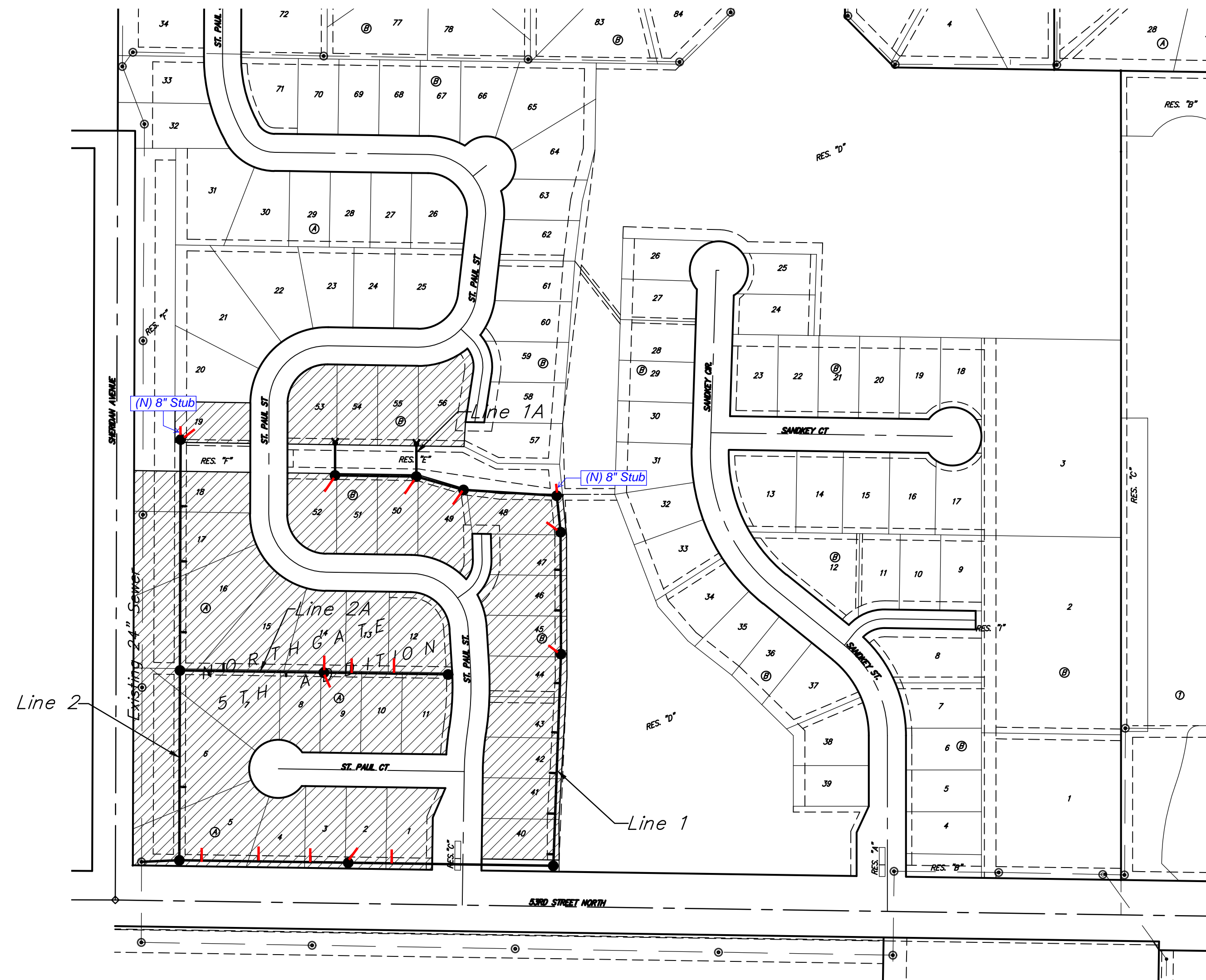


Vicinity Map

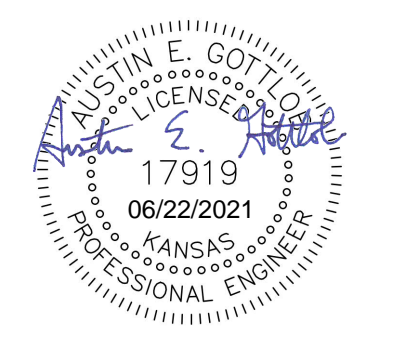


## Sheet Index

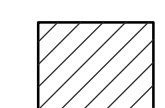
Title Sheet	1
Line 1	2-4
Line 1A	4
Line 2	5
Line 2A	6
Erosion Control Plan	7
Precast SS Manhole Detail	8
Manhole Frame & Cover Detail	9
Vertical Riser Detail	10
Cleanout Riser Assembly Detail	11
Erosion Control BMP Details	12-16
Coordinate Sheet	17
Copy of Plat	18



APPROVED AS NOTED  
BY WICHITA PUBLIC WORKS ENGINEERING  
Engineering *Shan Mollis* 6-23-2021  
An approved copy of these plans signed by City staff are required on-site.



Benefit District



**BAUGHMAN COMPANY**  
315 Ellis St. Wichita, KS 67211 316-262-7271  
BaughmanCo.com

June 21, 2021



SEWER SERVICE TABLE

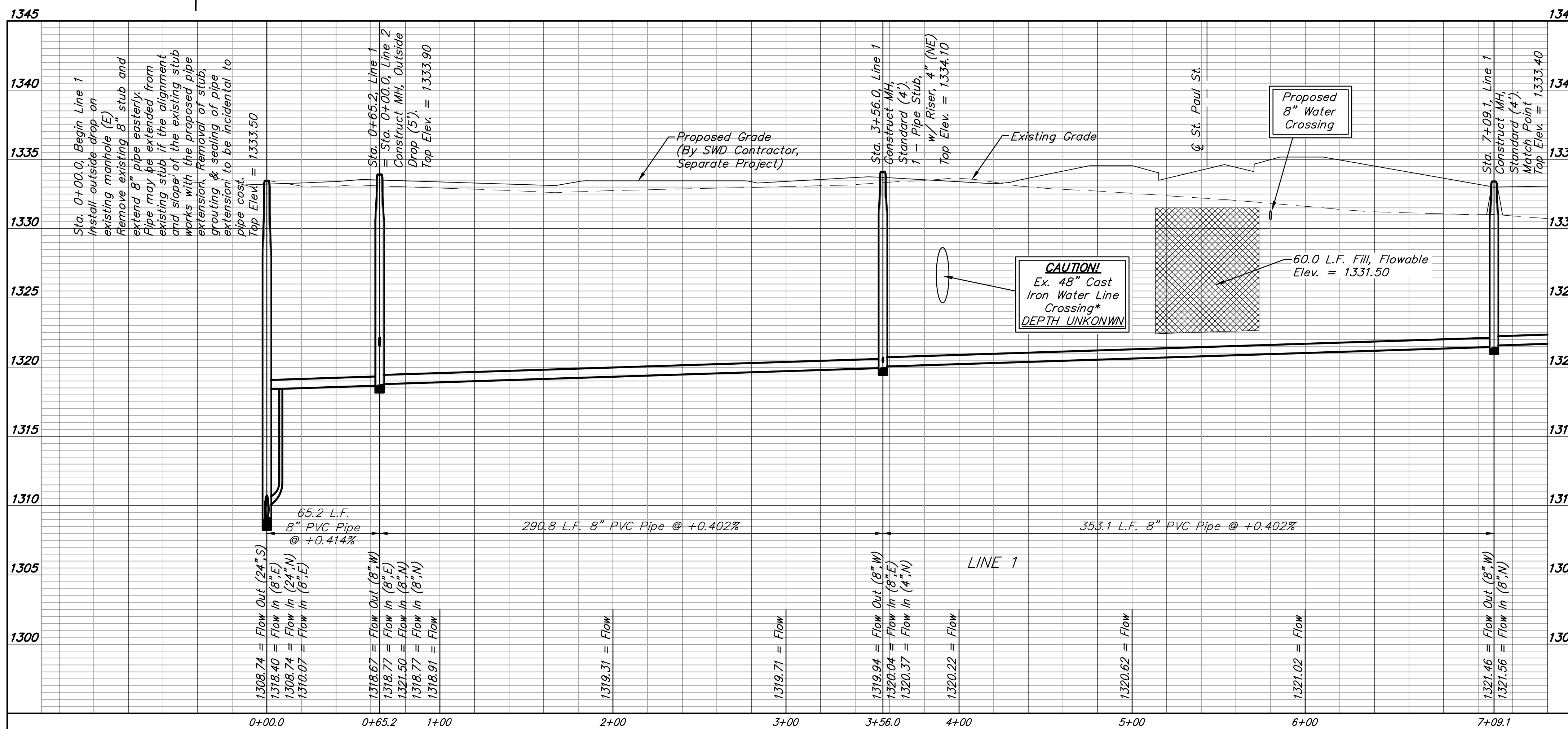
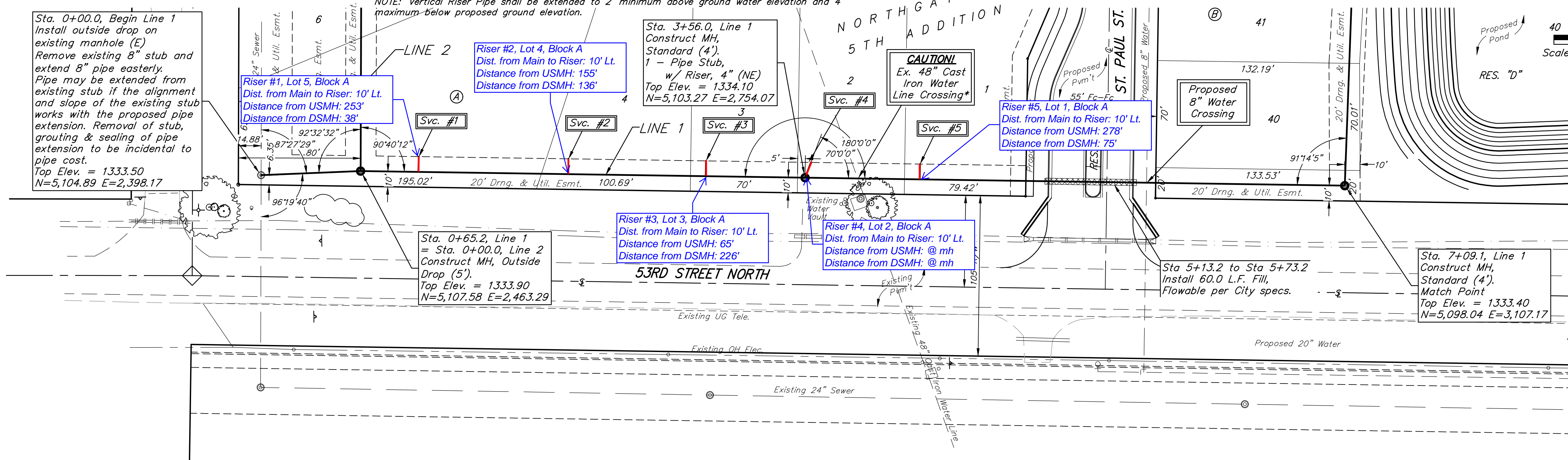
NUMBER	TYPE	LOCATION				FOR INFORMATION ONLY	
		LOT NO.	BLOCK NO.	LINE NO.	STATION	APPROXIMATE LENGTH 4" PIPE VERTICAL	HORIZONTAL
1	8" X 4" Tee W/Riser	5	A	1	1+03.0/Lt.	10.5'	10.0'
2	8" X 4" Tee W/Riser	4	A	1	2+01.0/Lt.	10.5'	10.0'
3	8" X 4" Tee W/Riser	3	A	1	2+91.0/Lt.	10.0'	10.0'
4	4" Stub W/Riser	2	A	1	3+56.0/Lt.	10.0'	10.0'
5	8" X 4" Tee W/Riser	1	A	1	4+31.0/Lt.	9.5'	10.0'

NOTE: Vertical Riser Pipe shall be extended to 2' minimum above ground water elevation and 4' maximum below proposed ground elevation.

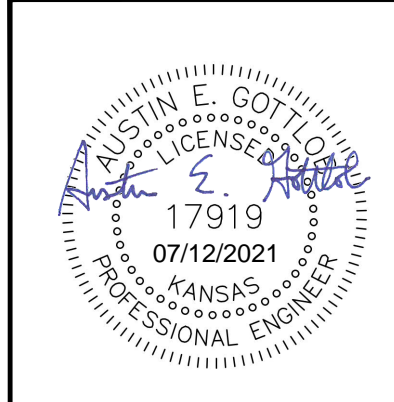
BENCHMARKS:

BM #1: "□" Center of storm water sewer cauld, west side of Meridian, 22.4' S. & 30.5' E. of the SE Cor., Lot 1, Block D, Northgate 4th Addition. Elev. = 1334.49 (NAVD88)

BM #2: BM Disk, top of curb, 14.8' W. & 0.7' N. of the SW Cor., Lot 10, Block D, Northgate 4th Addition. Elev. = 1337.35 (NAVD 88)



Contractor shall verify elevation and alignment of existing 8" stub prior to construction and notify Engineer of any discrepancy.



**BAUGHMAN COMPANY**  
 315 Ellis St.  
 Wichita, KS 67211  
 316-262-7271  
 BaughmanCo.com

NORTHGATE 5TH ADD.  
 Phase 1

**LINE 1**

SANITARY SEWER IMPROVEMENTS

PROJECT NUMBER:  
 SS 21-02-E837

DESIGN: AEG DRAWN: TMS

DATE: July 1, 2021

SHEET OF  
**2 18**

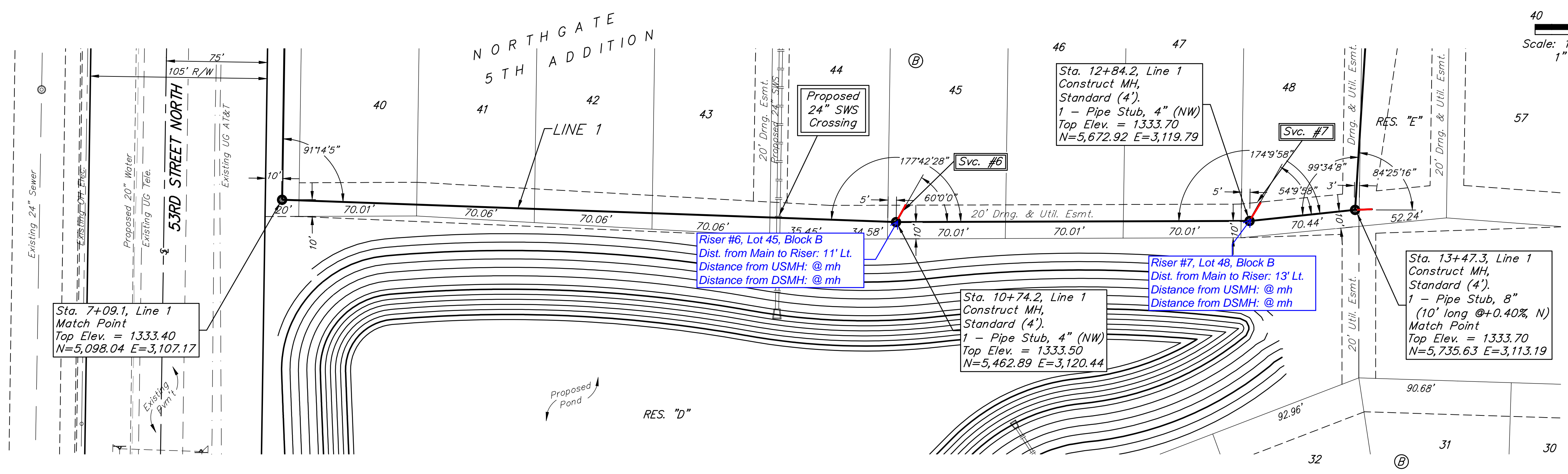
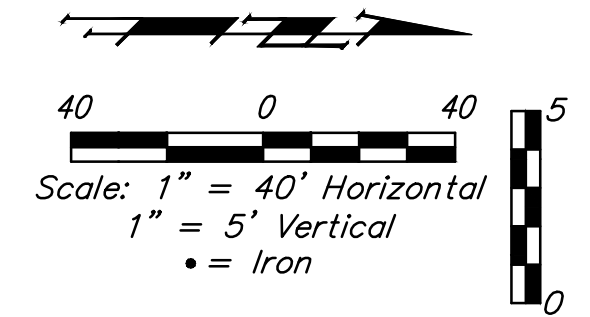
7/12/21 Revised sewer plans to raise pipe to reduce de-watering costs - AEG

File: E:\Projects\Northgate 5th Addition\_20-03-P538\Engineering\Phase 1\SS 21-02-E837\Sewer Revised.dwg

**BENCHMARKS:**

BM #1: "□" Center of storm water sewer cauld, west side of Meridian, 22.4' S. & 30.5' E. of the SE Cor., Lot 1, Block D, Northgate 4th Addition.  
Elev. = 1334.49 (NAVD88)

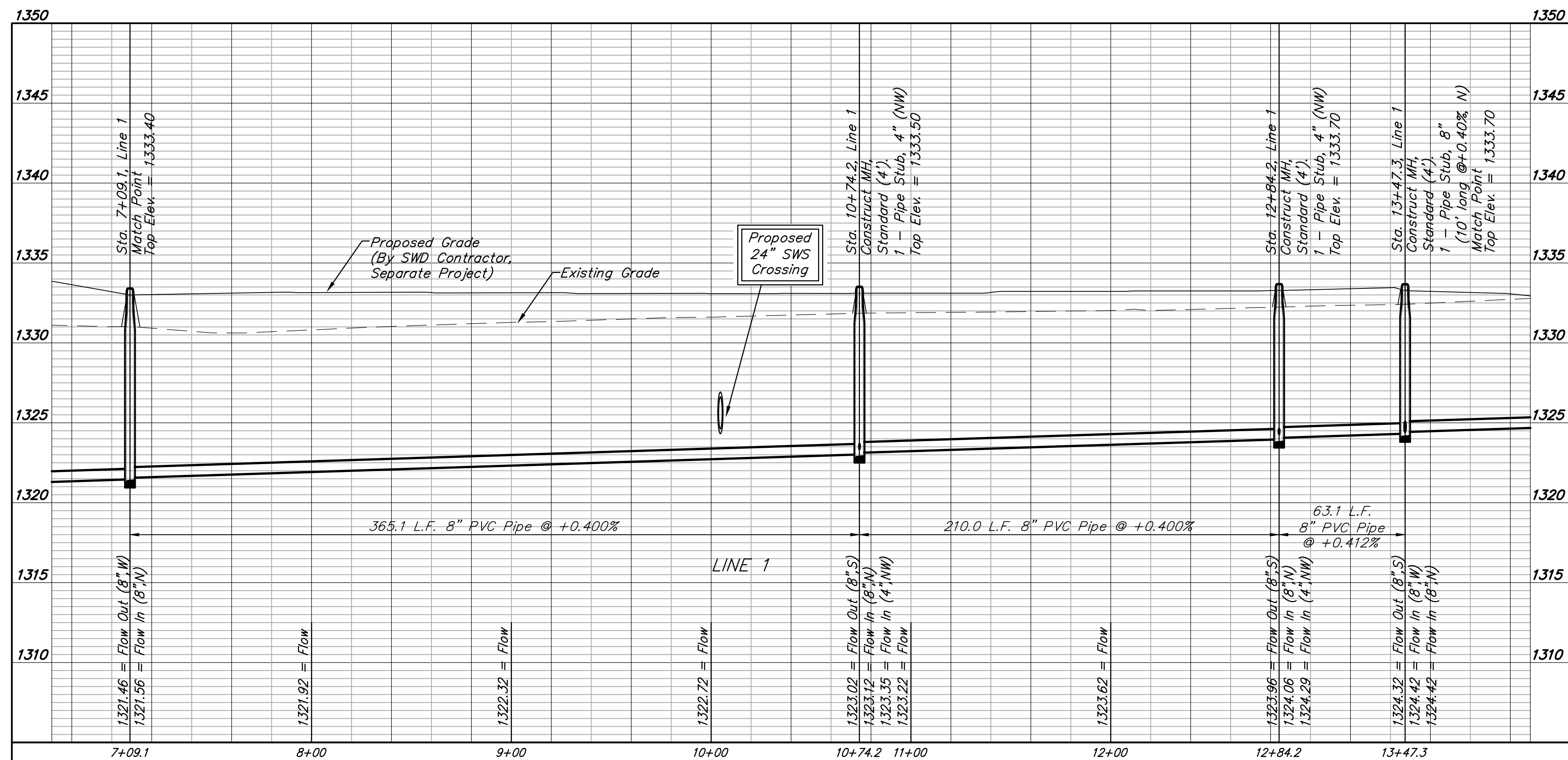
BM #2: BM Disk, top of curb, 14.8' W. & 0.7' N. of the SW Cor., Lot 10, Block D, Northgate 4th Addition.  
Elev. = 1337.35 (NAVD 88)



**SEWER SERVICE TABLE**

NUMBER	TYPE	LOCATION			FOR INFORMATION ONLY	
		LOT NO.	BLOCK NO.	LINE NO.	STATION \ DIRECTION	APPROXIMATE LENGTH 4" PIPE
6	4" Stub	45	B	1	10+74.2/Lt.	6.0'      10.6'
7	4" Stub	48	B	1	12+84.2/Lt.	5.5'      12.8'

NOTE: Vertical Riser Pipe shall be extended to 2' minimum above ground water elevation and 4' maximum below proposed ground elevation.



**BAUGHMAN COMPANY**  
315 Ellis St.  
Wichita, KS 67211  
316-262-7271  
BaughmanCo.com

NORTHGATE 5TH ADD.  
Phase 1

**LINE 1**

SANITARY SEWER IMPROVEMENTS

PROJECT NUMBER:  
SS 21-02-E837

DESIGN: AEG DRAWN: TMS  
DATE: July 12, 2021

SHEET **3** OF **18**

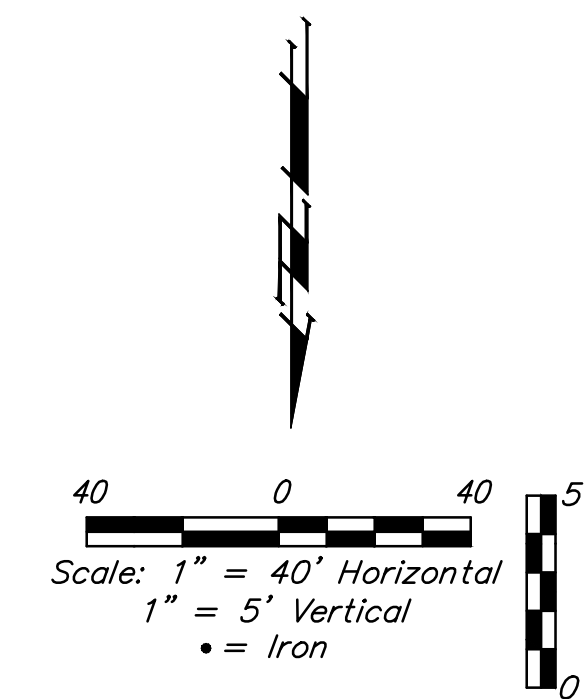
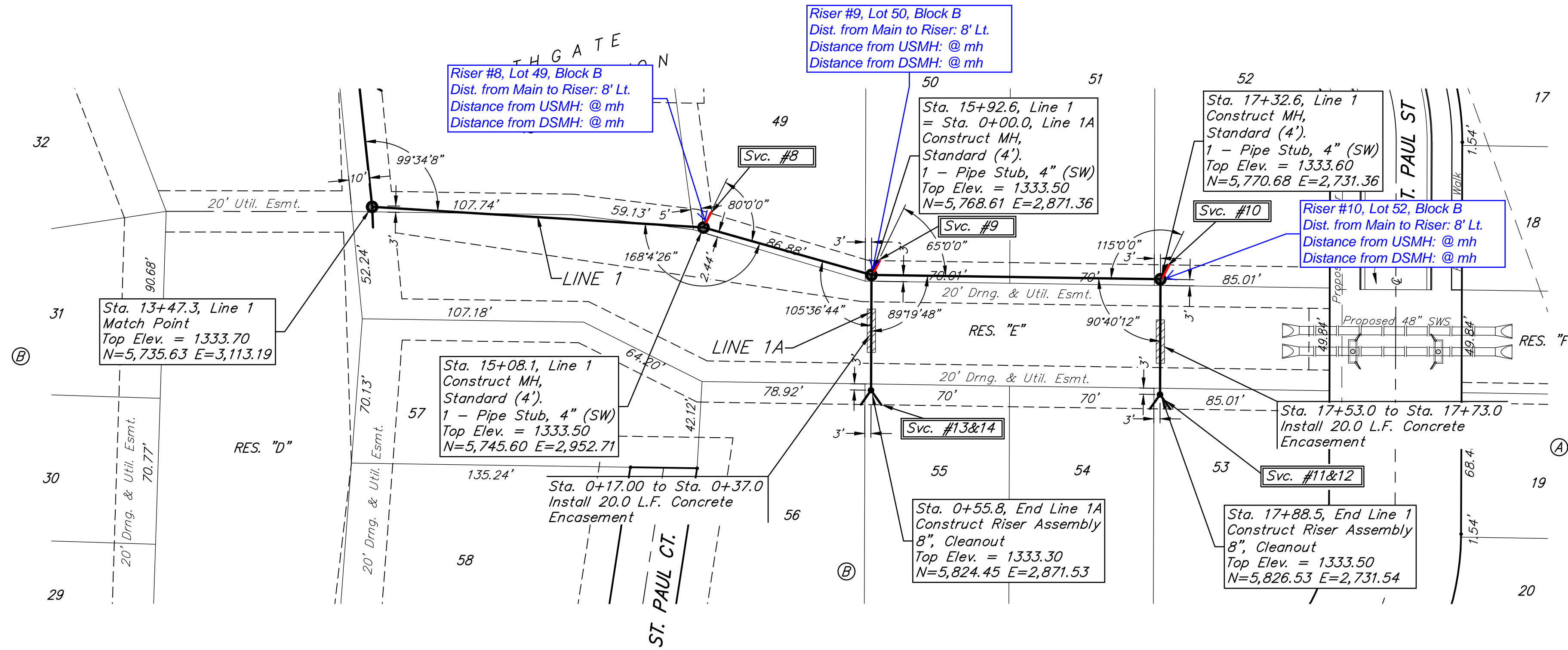
7/12/21 Revised sewer plans to raise pipe to reduce de-watering costs - AEG

File: E:\Projects\Northgate 5th Addition\_20-03-P538\Engineering\Phase 1\SS 21-02-E837\Sewer Revised.dwg

**BENCHMARKS:**

BM #1: "□" Center of storm water sewer cauld, west side of Meridian, 22.4' S. & 30.5' E. of the SE Cor., Lot 1, Block D, Northgate 4th Addition.  
Elev. = 1334.49 (NAVD88)

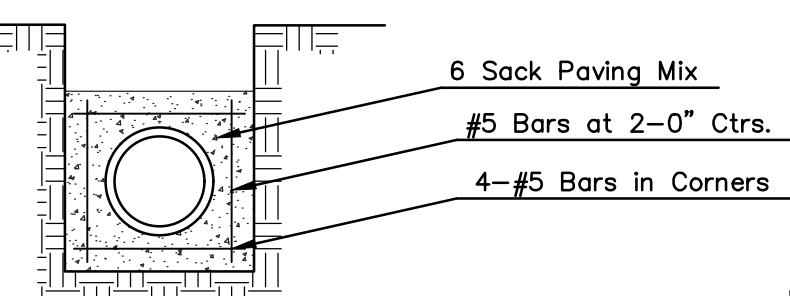
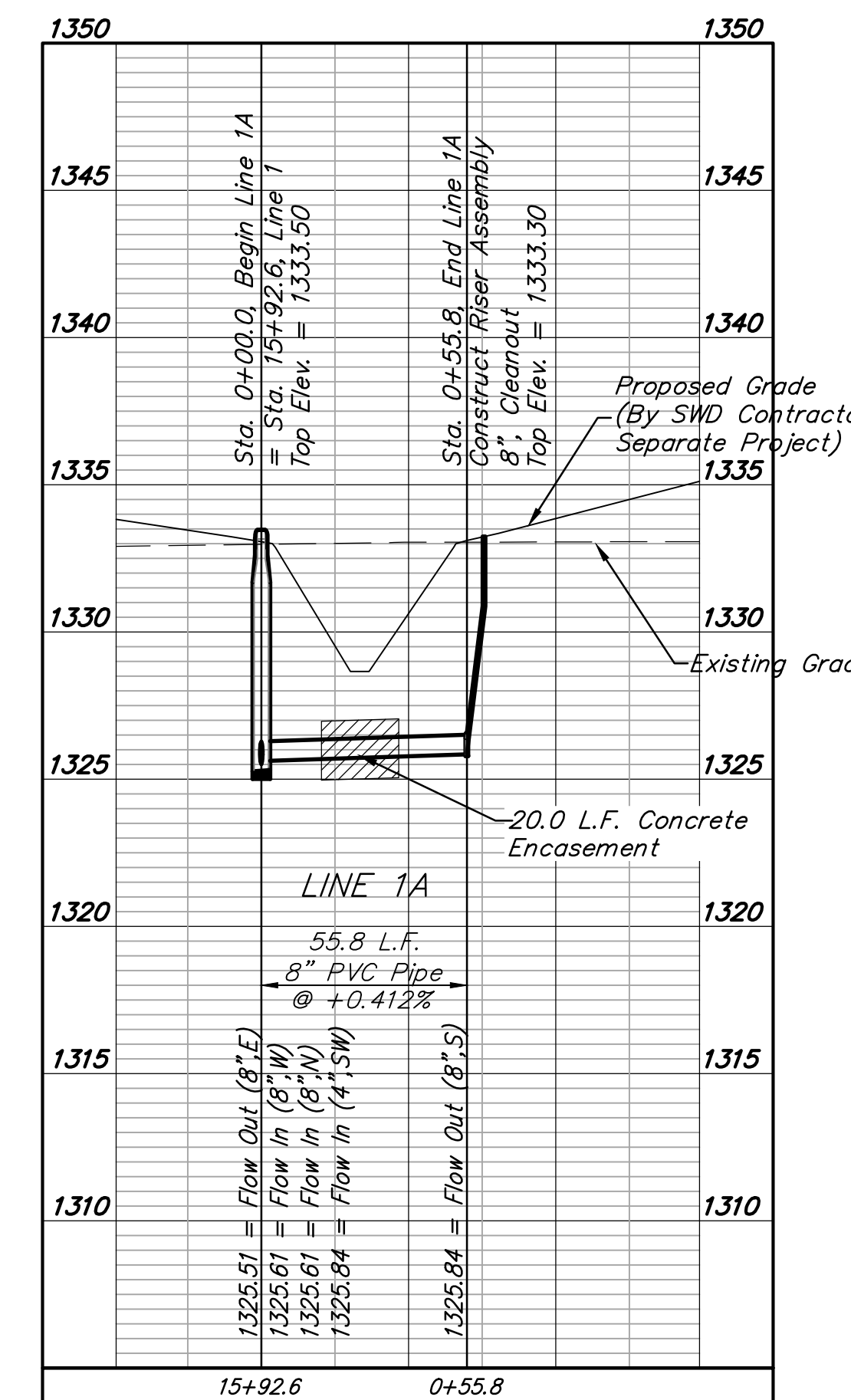
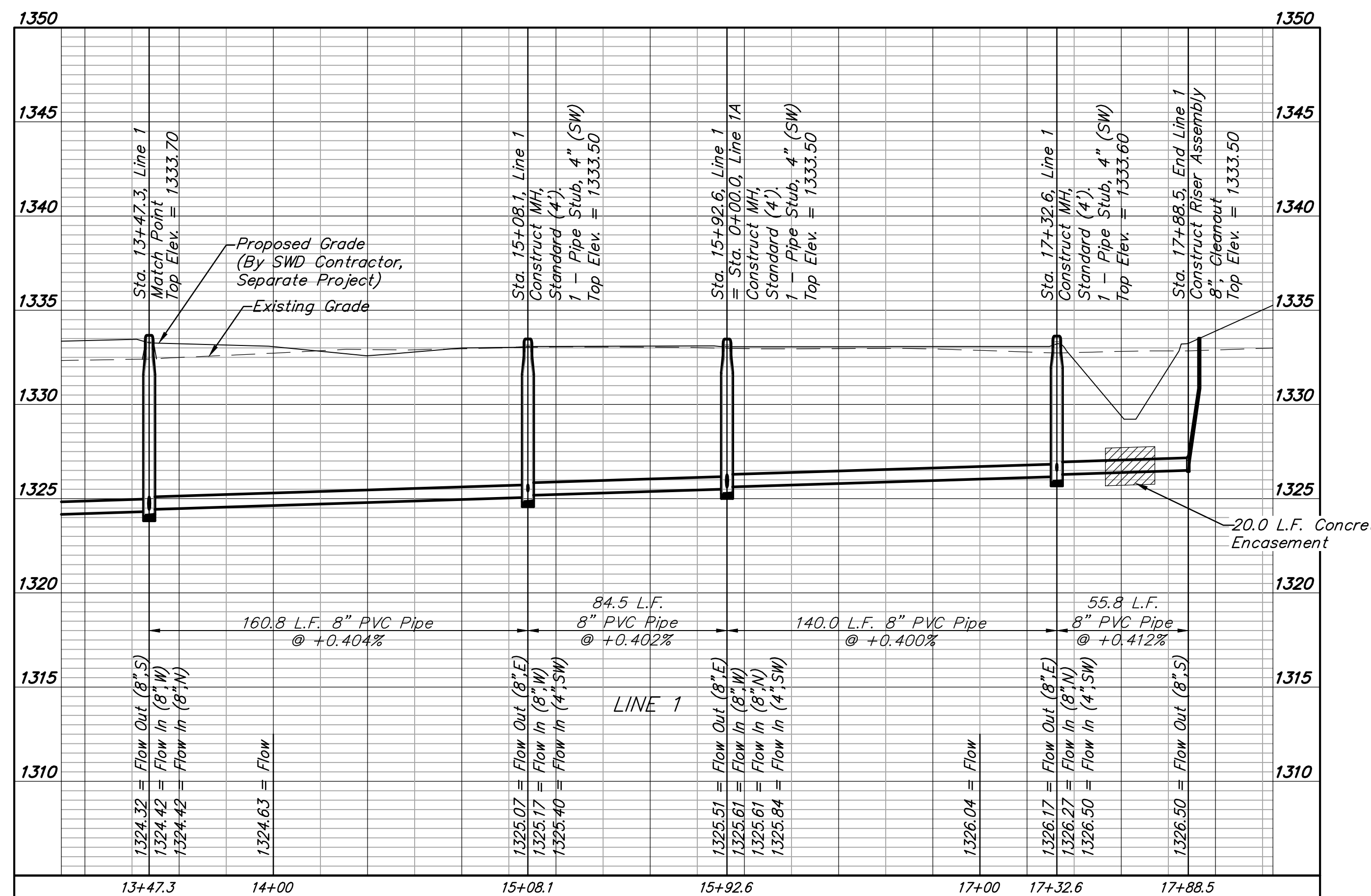
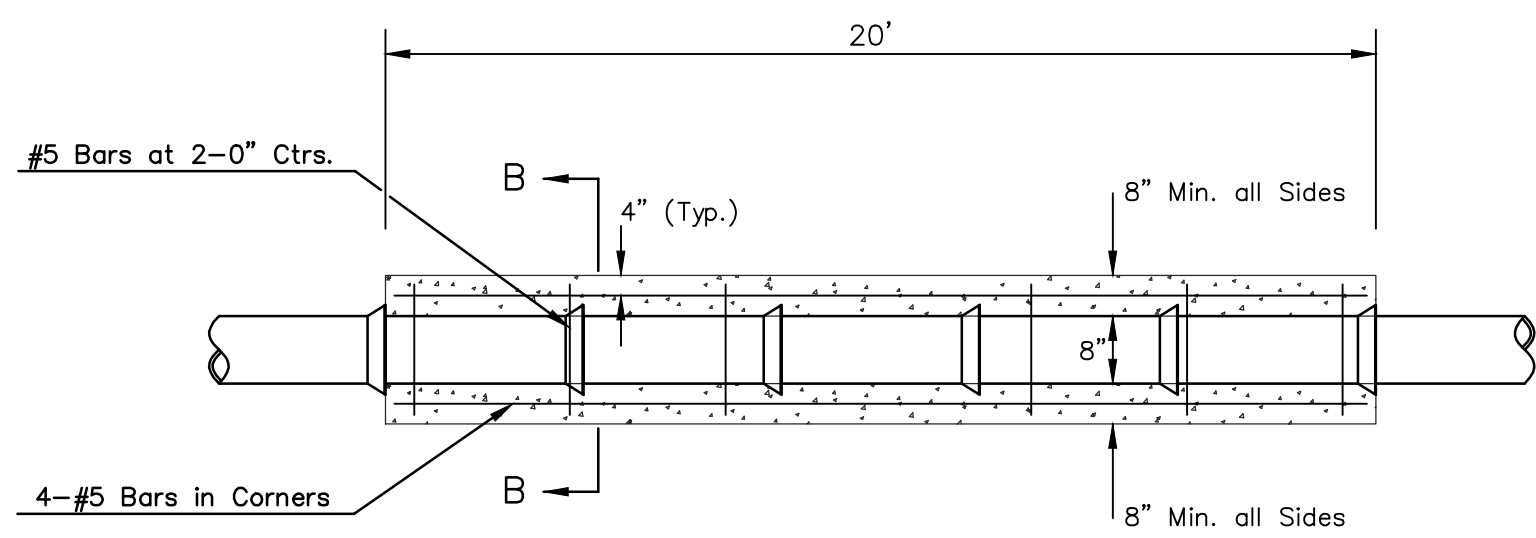
BM #2: BM Disk, top of curb, 14.8' W. & 0.7' N. of the SW Cor., Lot 10, Block D, Northgate 4th Addition.  
Elev. = 1337.35 (NAVD 88)



**SEWER SERVICE TABLE**

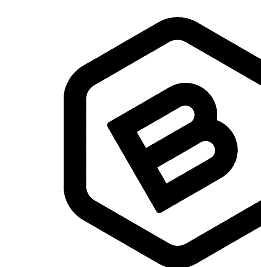
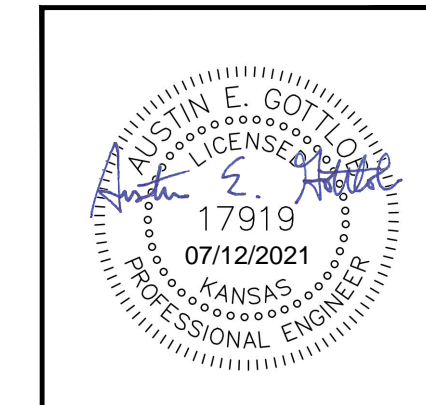
NUMBER	TYPE	LOCATION				FOR INFORMATION ONLY	
		LOT NO.	BLOCK NO.	LINE NO.	STATION \ DIRECTION	APPROXIMATE LENGTH 4" PIPE	VERTICAL
8	4" Stub	49	B	1	15+08.1/Lt.	-	7.7'
9	4" Stub	50	B	1	15+92.6/Lt.	-	7.7'
10	4" Stub	52	B	1	17+32.6/Lt.	-	7.7'
11	Cleanout Assy.	53	B	1	17+88.5/Lt.	-	8.5'
12	Cleanout Assy.	54	B	1	17+88.5/Rt.	-	8.5'
13	Cleanout Assy.	55	B	1A	0+55.8/Lt.	-	8.5'
14	Cleanout Assy.	56	B	1A	0+55.8/Rt.	-	8.5'

NOTE: Vertical Riser Pipe shall be extended to 2' minimum above ground water elevation and 4' maximum below proposed ground elevation.



Note: Encasement to begin and end at a Bell on Sanitary Sewer Pipe.

**REINFORCED CONCRETE ENCASEMENT OF SANITARY SEWER**



**BAUGHMAN COMPANY**

315 Ellis St.  
Wichita, KS 67211  
316-262-7271  
BaughmanCo.com

NORTHGATE 5TH ADD.  
Phase 1

**LINES 1 & 1A**

SANITARY SEWER IMPROVEMENTS

PROJECT NUMBER:  
SS 21-02-E837

DESIGN: AEG DRAWN: TMS

DATE: July 1, 2021

SHEET OF  
**4 18**

7/12/21 Revised sewer plans to raise pipe to reduce de-watering costs - AEG

File: E:\Projects\Northgate 5th Addition\_20-03-P538\Engineering\Phase 1\SS 21-02-E837\Sewer Revised.dwg

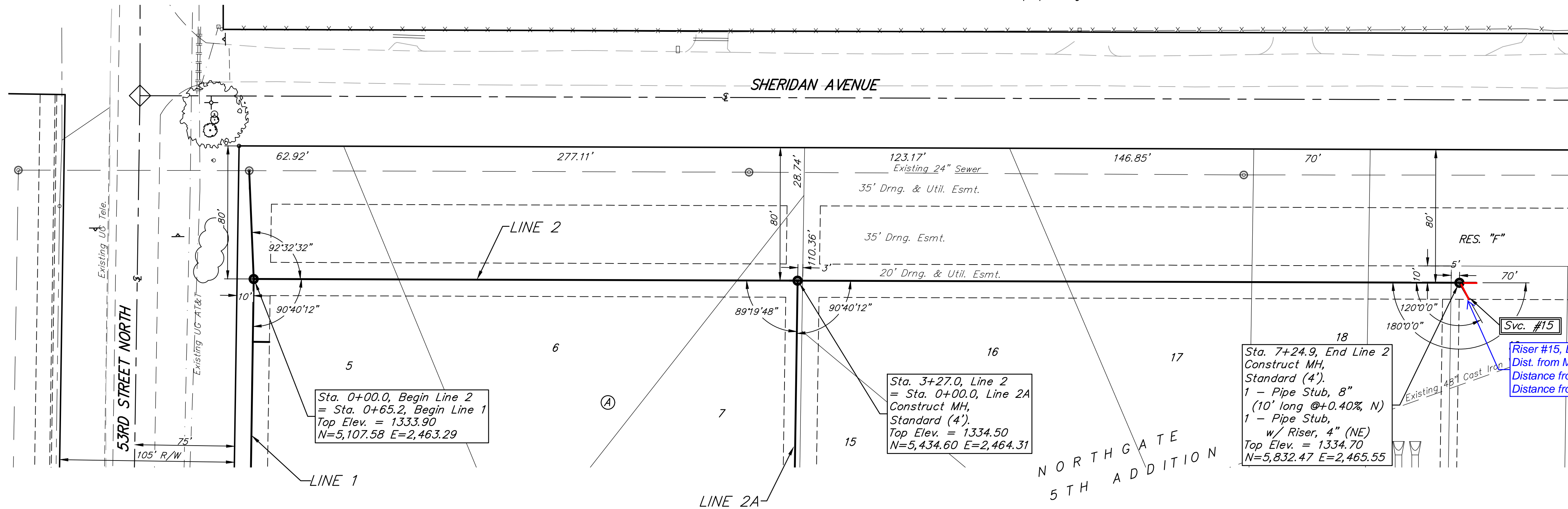
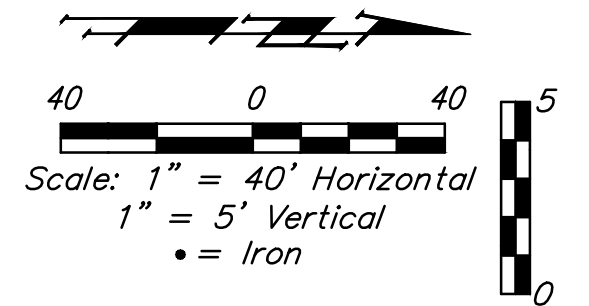
**BENCHMARKS:**  
 BM #1: "□" Center of storm water sewer cauld, west side of Meridian, 22.4' S. & 30.5' E. of the SE Cor., Lot 1, Block D, Northgate 4th Addition.  
 Elev. = 1334.49 (NAVD88)

BM #2: BM Disk, top of curb, 14.8' W. & 0.7' N. of the SW Cor., Lot 10, Block D, Northgate 4th Addition.  
 Elev. = 1337.35 (NAVD 88)

SEWER SERVICE TABLE

NUMBER	TYPE	LOCATION			FOR INFORMATION ONLY	
		LOT NO.	BLOCK NO.	LINE NO.	STATION \ DIRECTION	APPROXIMATE LENGTH 4" PIPE
15	4" Stub W/Riser	19	A	2	7+24.9/Rt.	VERTICAL: 10.0' HORIZONTAL: 11.5'

NOTE: Vertical Riser Pipe shall be extended to 2' minimum above ground water elevation and 4' maximum below proposed ground elevation.

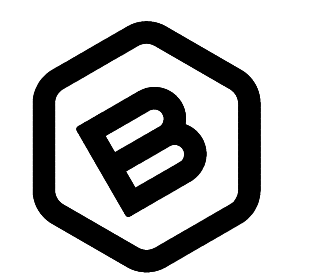
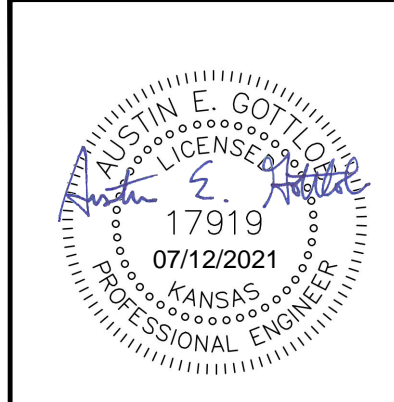
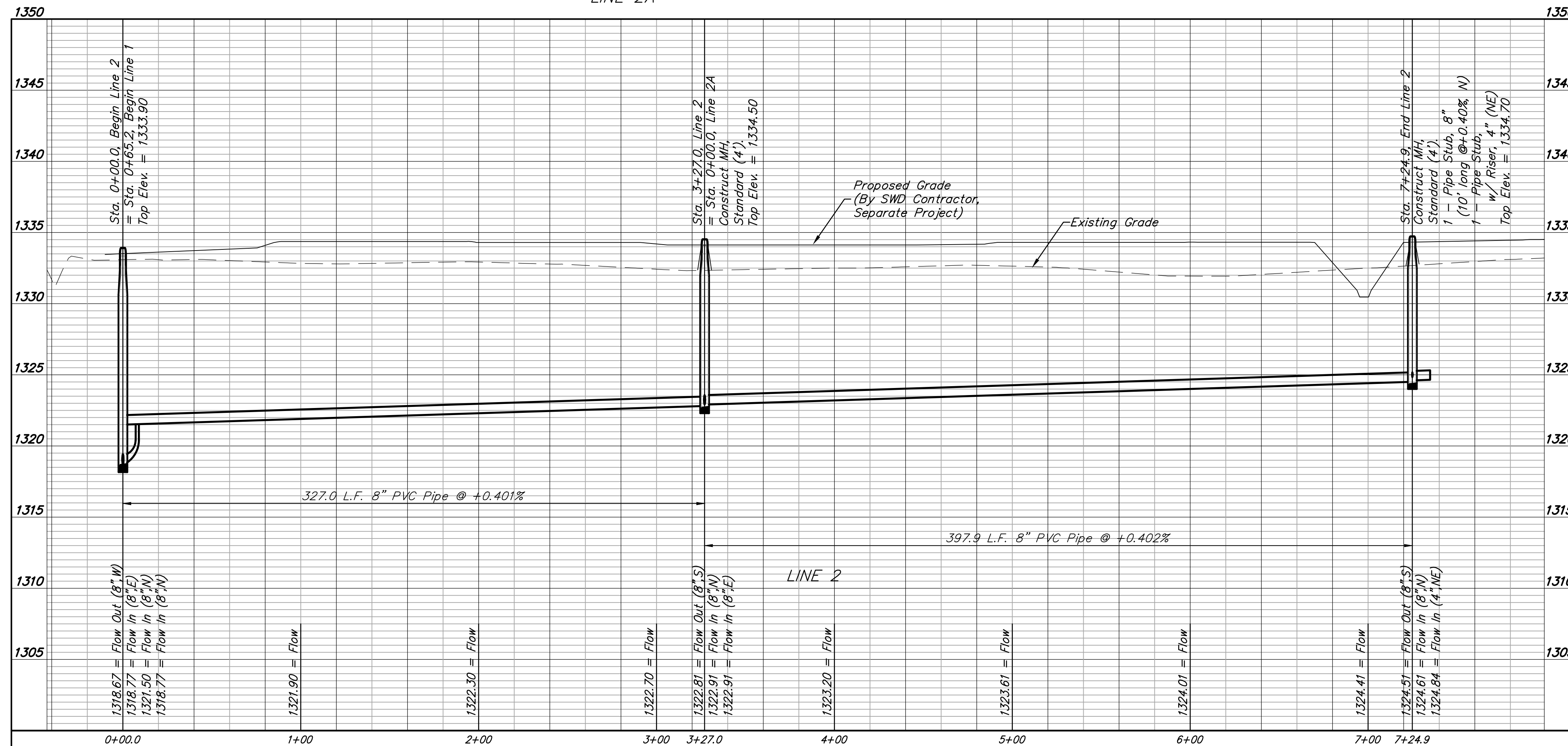


Sta. 0+00.0, Begin Line 2  
 = Sta. 0+65.2, Begin Line 1  
 Top Elev. = 1333.90  
 N=5,107.58 E=2,463.29

Sta. 3+27.0, Line 2  
 = Sta. 0+00.0, Line 2A  
 Construct MH,  
 Standard (4').  
 Top Elev. = 1334.50  
 N=5,434.60 E=2,464.31

Sta. 7+24.9, End Line 2  
 Construct MH,  
 Standard (4').  
 1 - Pipe Stub, 8"  
 (10' long @+0.40% N)  
 1 - Pipe Stub,  
 w/ Riser, 4" (NE)  
 Top Elev. = 1334.70  
 N=5,832.47 E=2,465.55

Riser #15, Lot 19, Block A  
 Dist. from Main to Riser: 12' Rt.  
 Distance from USMH: @ mh  
 Distance from DSMH: @ mh



**BAUGHMAN COMPANY**  
 315 Ellis St.  
 Wichita, KS 67211  
 316-262-7271  
 BaughmanCo.com

NORTHGATE 5TH ADD.  
 Phase 1

**LINE 2**

SANITARY SEWER IMPROVEMENTS

PROJECT NUMBER:  
 SS 21-02-E837

DESIGN: AEG DRAWN: TMS

DATE: July 1, 2021

SHEET **5** OF **18**

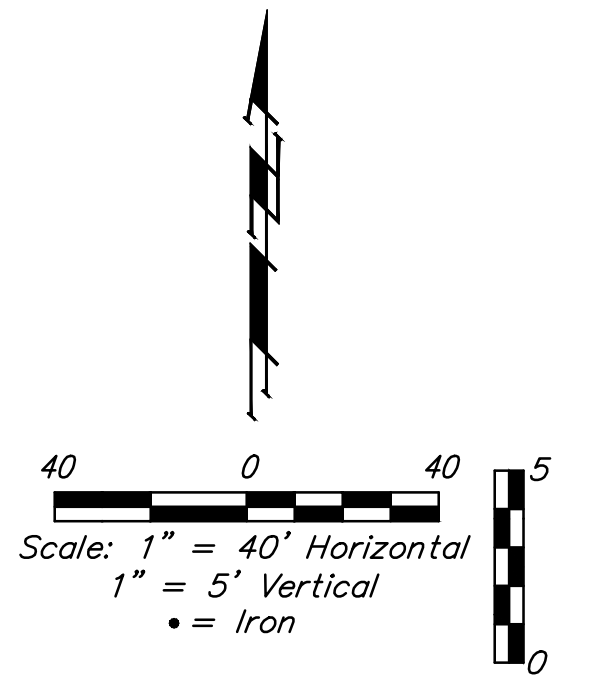
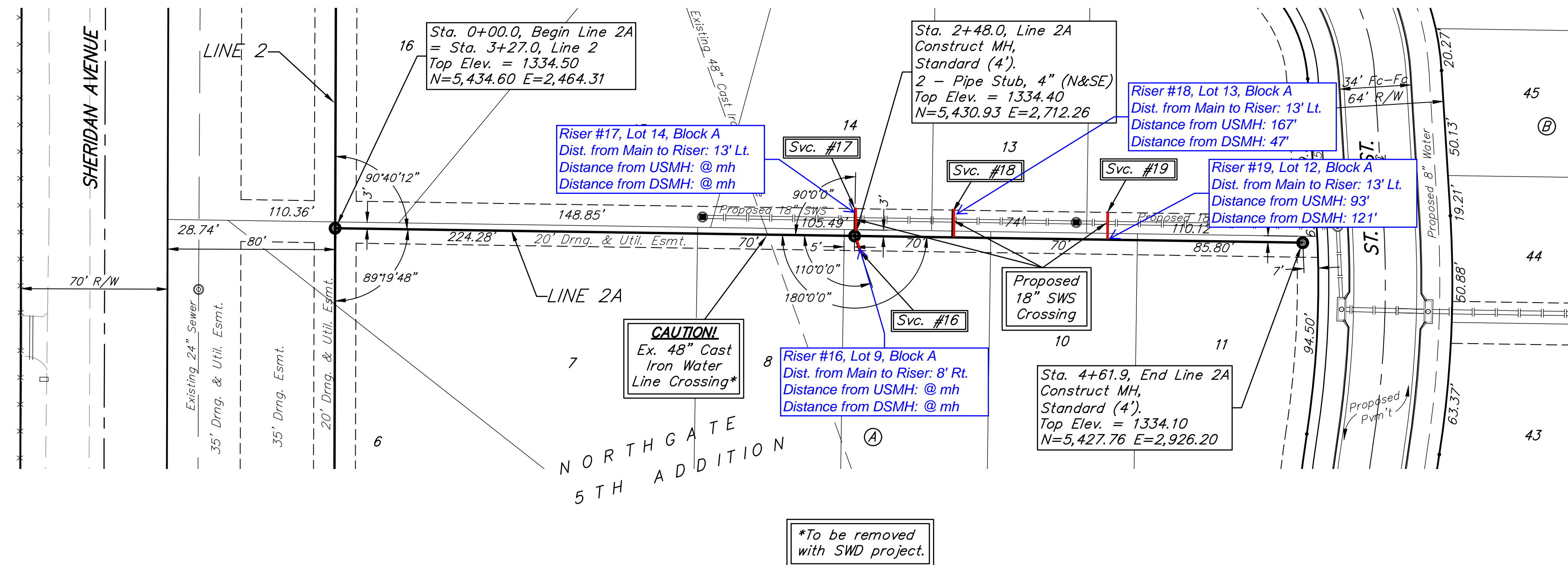
7/1/21 Revised sewer plans to raise pipe to reduce de-watering costs - AEG

File: E:\Projects\Northgate 5th Addition\_20-03-P538\Engineering\Phase 1\SS 21-02-E837\Sewer Revised.dwg

**BENCHMARKS:**

BM #1: "□" Center of storm water sewer caulk, west side of Meridian, 22.4' S. & 30.5' E. of the SE Cor., Lot 1, Block D, Northgate 4th Addition.  
Elev. = 1334.49 (NAVD88)

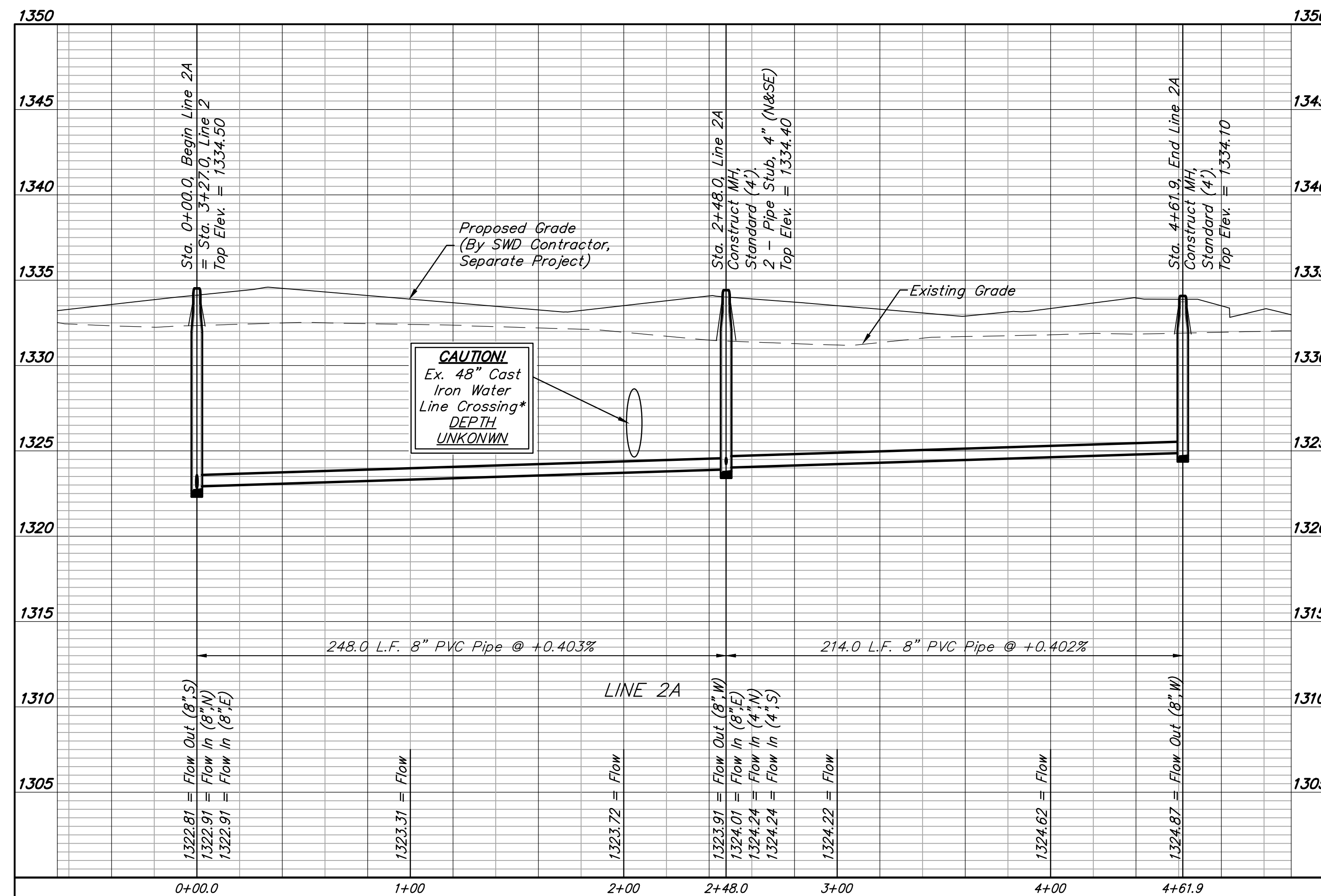
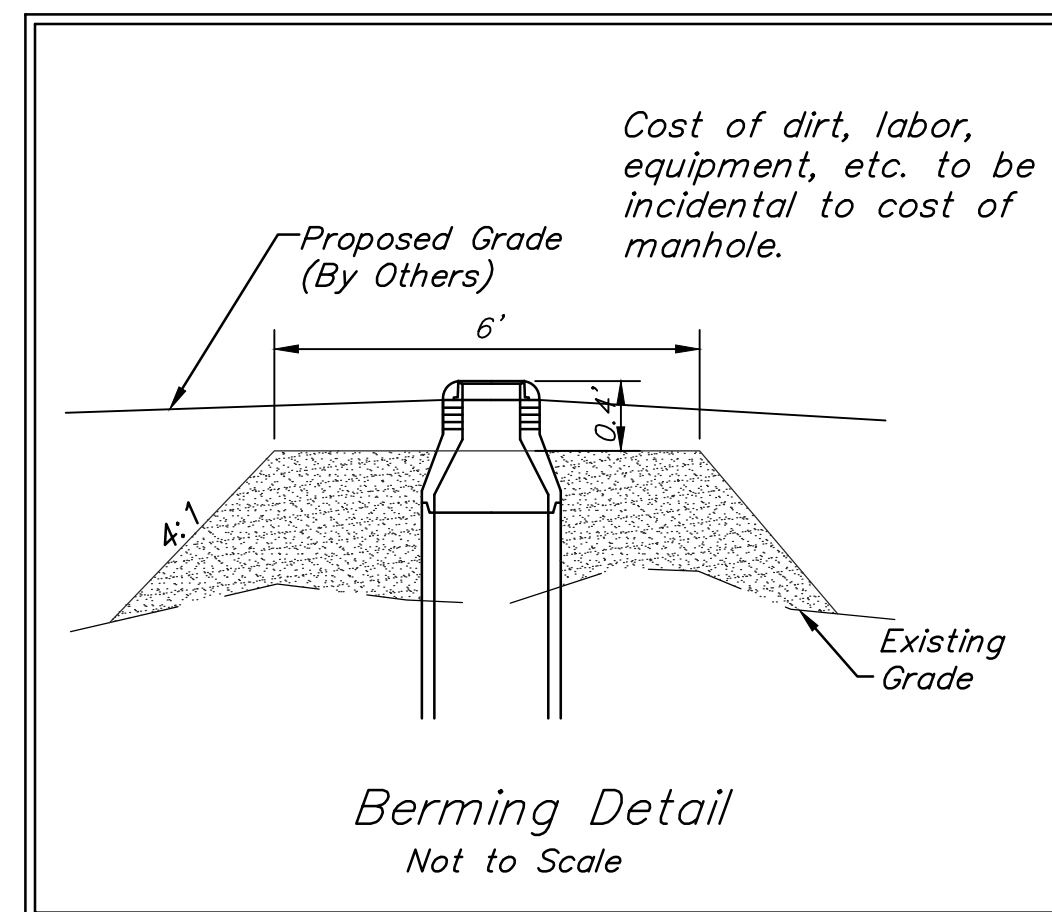
BM #2: BM Disk, top of curb, 14.8' W. & 0.7' N. of the SW Cor., Lot 10, Block D, Northgate 4th Addition.  
Elev. = 1337.35 (NAVD 88)



**SEWER SERVICE TABLE**

NUMBER	TYPE	LOCATION			STATION \ DIRECTION	FOR INFORMATION ONLY	
		LOT NO.	BLOCK NO.	LINE NO.		APPROXIMATE LENGTH 4" PIPE	VERTICAL
16	4" Stub	9	A	2A	2+48.0/Rt.	-	7.5'
17	4" Stub	14	A	2A	2+48.0/Lt.	-	13.0'
18	8" X 4" Tee W/Riser	13	A	2A	2+94.7/Lt.	-	13.0'
19	8" X 4" Tee W/Riser	12	A	2A	3+68.7/Lt.	-	13.0'

NOTE: Vertical Riser Pipe shall be extended to 2' minimum above ground water elevation and 4' maximum below proposed ground elevation.



17/12/21 Revised sewer plans to raise pipe to reduce de-watering costs - AEG

**BAUGHMAN COMPANY**  
315 Ellis St.  
Wichita, KS 67211  
316-262-7271  
BaughmanCo.com

**NORTHGATE 5TH ADD.**  
Phase 1

**LINE 2A**

SANITARY SEWER IMPROVEMENTS

PROJECT NUMBER:  
SS 21-02-E837

DESIGN: AEG DRAWN: TMS

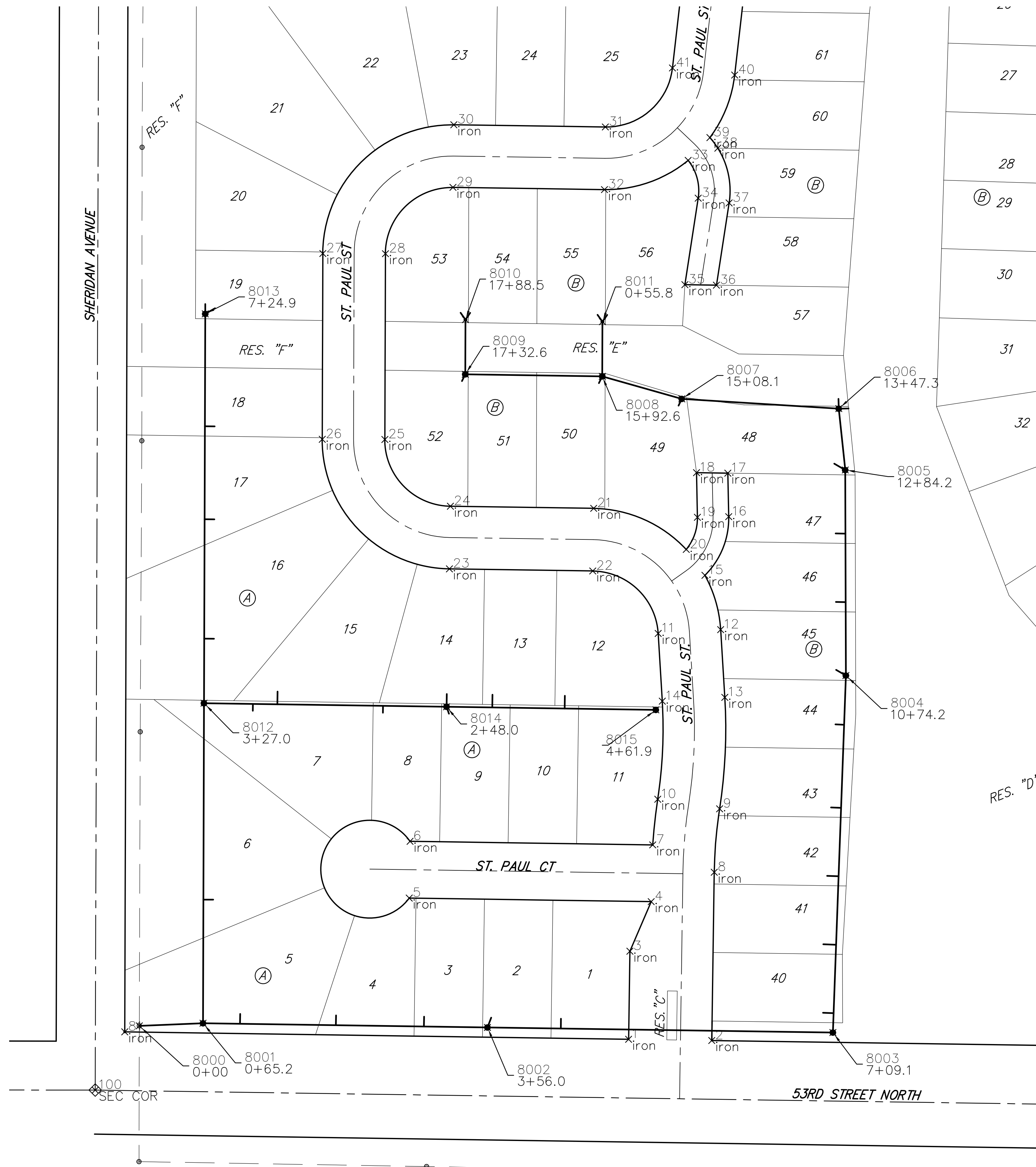
DATE: July 1, 2021

SHEET OF  
**6 18**

File: E:\Projects\Northgate 5th Addition\_20-03-P538\Engineering\Phase 1\SS 21-02-E837\Sewer Revised.dwg

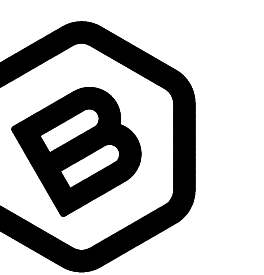
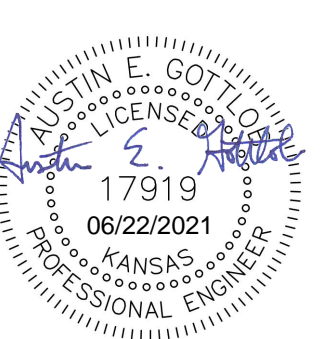
IRONS

Point Table			
Point #	Northing	Easting	Raw Description
1	5091.14	2898.33	iron
2	5089.88	2983.32	iron
3	5181.13	2899.66	iron
4	5231.81	2921.41	iron
5	5235.47	2674.08	iron
6	5293.47	2674.94	iron
7	5289.79	2922.96	iron
8	5261.87	2985.87	iron
9	5326.65	2991.34	iron
10	5336.46	2928.10	iron
11	5505.88	2928.53	iron
12	5509.78	2992.41	iron
13	5440.56	2996.64	iron
14	5436.67	2932.75	iron
15	5565.26	2976.37	iron
16	5625.21	3000.68	iron
17	5669.70	2999.78	iron
18	5670.17	2967.77	iron
19	5624.57	2968.69	iron
20	5591.71	2957.24	iron
21	5633.72	2862.61	iron
22	5569.73	2861.66	iron
23	5571.90	2715.20	iron
24	5635.89	2716.15	iron
25	5704.10	2649.15	iron
26	5704.30	2585.15	iron
27	5894.15	2585.75	iron
28	5893.95	2649.75	iron
29	5961.73	2718.75	iron
30	6025.72	2719.70	iron
31	6023.43	2874.58	iron
32	5959.44	2873.63	iron
33	5989.30	2959.22	iron
34	5950.67	2969.43	iron
35	5862.29	2955.84	iron
36	5861.81	2988.05	iron
37	5945.80	3001.06	iron
38	6001.81	2989.50	iron
39	6012.58	2981.45	iron
40	6076.49	3006.74	iron
41	6083.73	2943.15	iron
81	5098.77	2383.27	iron
100	5039.21	2353.08	SEC COR



SANITARY SEWER

Point Table			
Point #	Northing	Easting	Raw Description
8000	5104.89	2398.17	0+00
8001	5107.58	2463.29	0+65.2
8002	5103.27	2754.07	3+56.0
8003	5098.04	3107.17	7+09.1
8004	5462.89	3120.44	10+74.2
8005	5672.92	3119.79	12+84.2
8006	5735.63	3113.19	13+47.3
8007	5745.60	2952.71	15+08.1
8008	5768.61	2871.36	15+92.6
8009	5770.68	2731.36	17+32.6
8010	5826.53	2731.54	17+88.5
8011	5824.45	2871.53	0+55.8
8012	5434.60	2464.31	3+27.0
8013	5832.47	2465.55	7+24.9
8014	5430.93	2712.26	2+48.0
8015	5427.76	2926.20	4+61.9



**BAUGHMAN COMPANY**  
 315 Ellis St.  
 Wichita, KS 67211  
 316-262-7271  
 BaughmanCo.com

NORTHGATE 5TH ADD.  
 Phase 1

**COORDINATE SHEET**

SANITARY SEWER IMPROVEMENTS

PROJECT NUMBER:  
 SS 21-02-E837

DESIGN: AEG DRAWN: TMS

DATE: June 21, 2021

SHEET **17** OF **18**

File: E:\Projects\Northgate 5th Addition\_20-03-P538\Engineering\Phase 1\SS 21-02-E837\Sewer.dwg