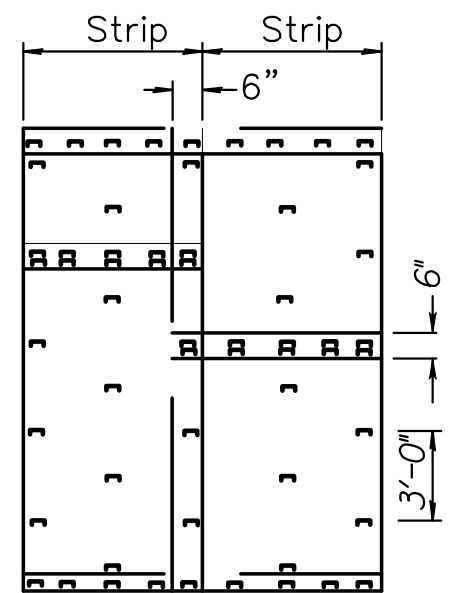


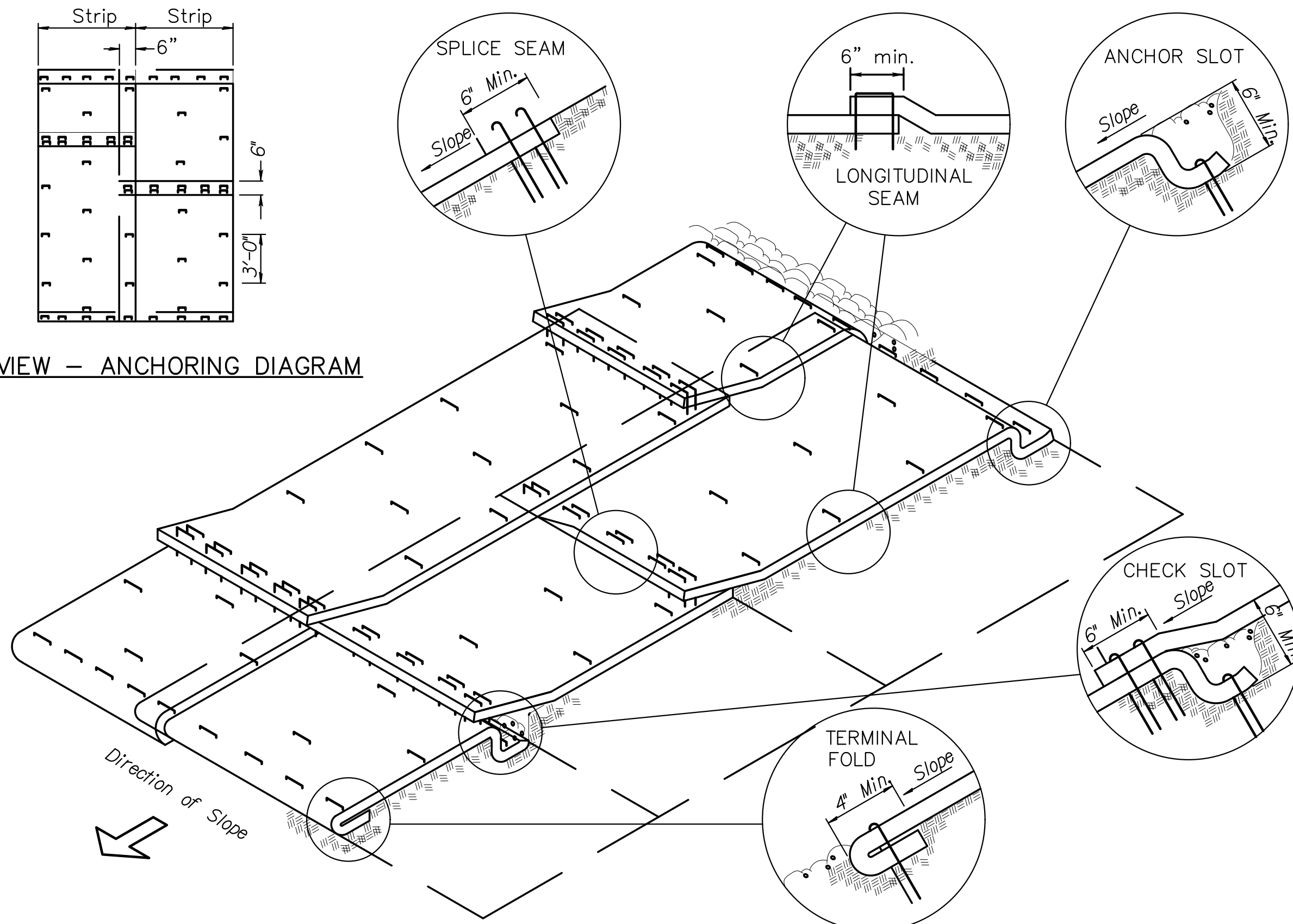
INSTALLATION DETAILS ON SLOPES

Material shall be laid loosely in the direction of the slope, beginning at the bottom of the slope. In order for the blanket to be in contact with the soil, lay the blanket loosely, avoiding stretching.

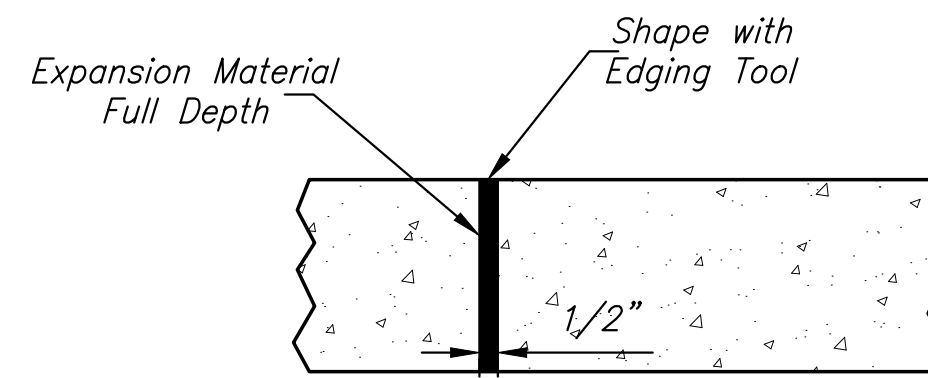
1. Install product in accordance with the manufacturers recommendations.
2. **ANCHOR SLOTS:** The top of the blanket should be "slotted in" at the top of the slope and anchored in place with anchors 6 inches apart. The slots should be 6 inches wide x 6 inches deep with the blanket anchored in the bottom of the slot, then backfilled, tamped and seeded.
3. **LONGITUDINAL SEAMS:** The edges of the blanket should overlap each other a minimum of 6 inches, with anchors catching the edges of both blankets.
4. **SPLICE SEAM:** When splices are necessary, overlap end a minimum of 6 inches in direction of water flow. Stagger splice seams.
5. **CHECK SLOTS:** Establish check slots transverse to slope every 30 feet. The slots should be 6 inches wide x 6 inches deep. The blanket shall be cut to a length 6 inches beyond the slot. The top of the downslope blanket shall be slotted in, anchored and buried, tamped and seeded similar to the top anchor slot. The upslope blanket shall then cover the slot and be anchored as shown.
6. **TERMINAL FOLD:** The bottom edge of the blanket shall be turned under a minimum of 4 inches, then anchored in place with anchors 9 inches apart.
7. **TYPICAL ANCHORS:** Anchor design shall be as recommended by the manufacturer.



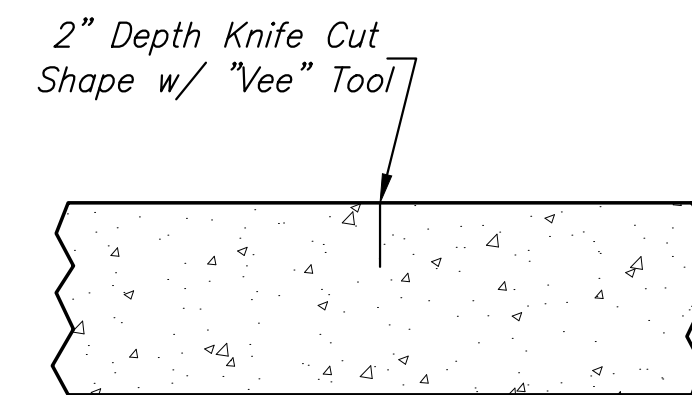
PLAN VIEW - ANCHORING DIAGRAM



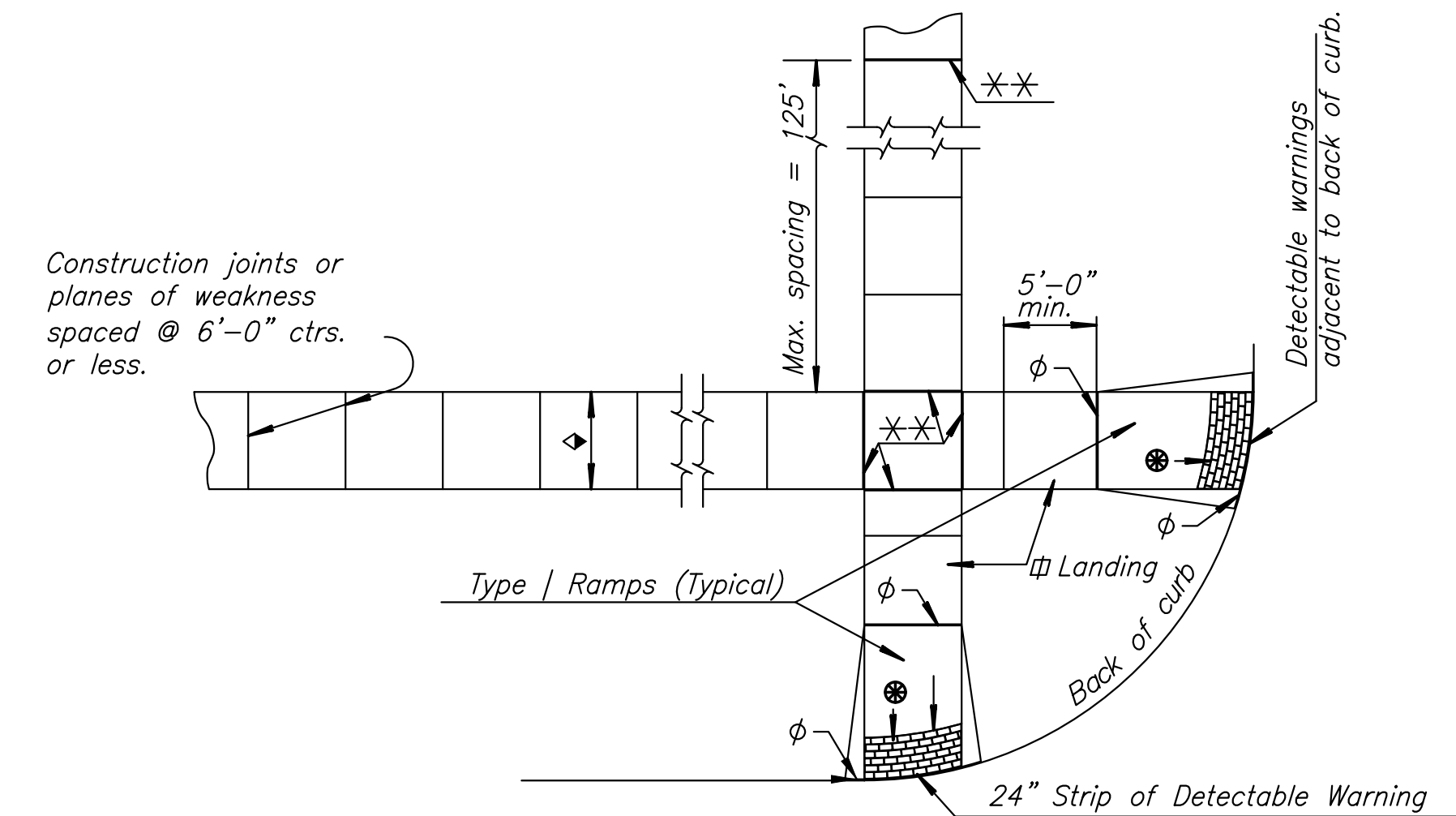
EROSION CONTROL MAT INSTALLATION DETAILS



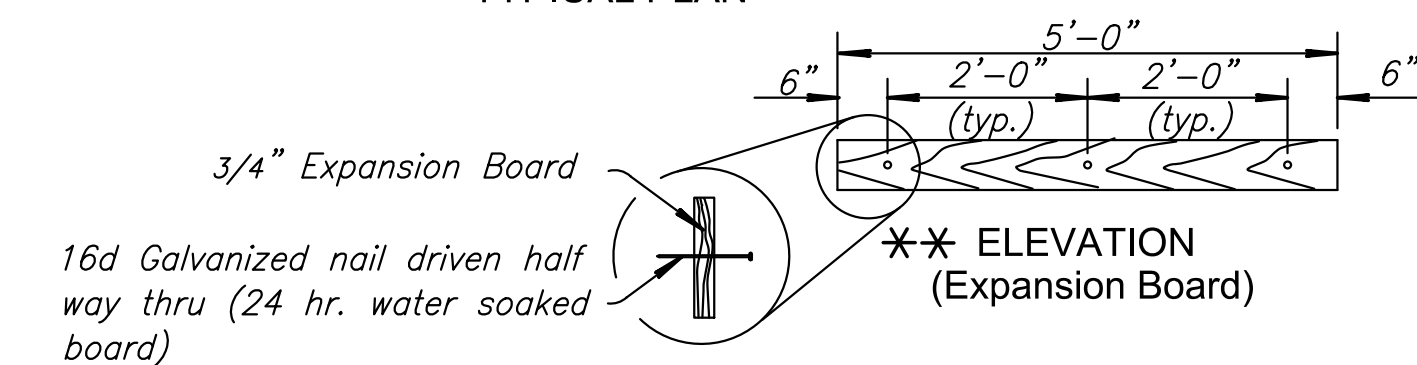
EXPANSION JOINT (E.J.)



No Sawn Joints Will Be Allowed
CONTRACTION JOINT (C.J.)



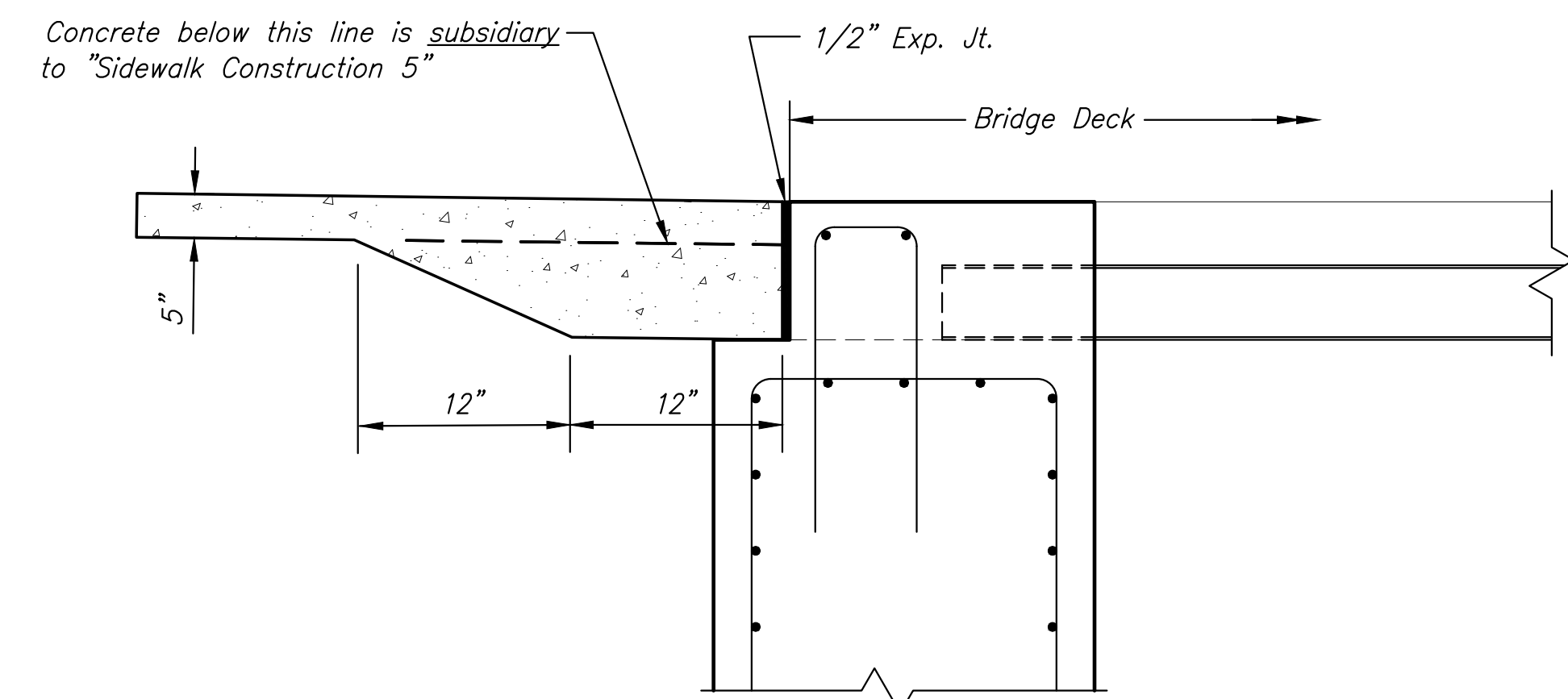
TYPICAL PLAN



For other than 5'-0" (width) use 6" from the end and balanced (3'-0" max.) nail spacing.

- φ Expansion Joint (3/4" board) placed at either back of curb line or at sidewalk back of curb line or at sidewalk line.
- * Expansion joint (3/4" board) located as shown.
- ♦ Variable width (5'-0" min.). Entrance walk to be same width as approach walk. Use sidewalk width of 4'-0" where existing conditions prohibit use of 5'-0".
- ☆ New construction ramp slopes are 12: 1 or flatter. Desirable ramp slopes for existing sites are 12:1 or flatter. Where space limitations prohibit construction of a 12:1 slope on existing sites, use the following slopes:
8:1 or flatter for a maximum rise of 3 inches
10:1 or flatter for a maximum rise of 6 inches
- ⊓ Use a landing slope of 48: 1 or flatter. Landings are the same width as ramp and a minimum 5'-0" in length.
- ∩ Use a counter slope of 20:1 or flatter at the base of sidewalk ramps. See curb and gutter detail sheet.
- ⊗ Detectable warning installation is typical and required on Sidewalk Ramps Type 1, Type 2, Type 3, median ramp crossings and other locations as shown in the plans. See ramp detail sheet.

TYPICAL SIDEWALK PLAN AND DETAILS



SIDEWALK THICKENING AT BRIDGE ABUTMENT SEAT

©2021 MKEC Engineering All Rights Reserved www.mkec.com
These drawings and their contents, including, but not limited to, all concepts, designs, & ideas are the exclusive property of MKEC Engineering (MKEC), and may not be used or reproduced in any way without the express consent of MKEC.

SIDEWALK AND MISCELLANEOUS DETAILS

PROJECT NO.		
DATE	01/20/2022	
SCALE	NONE	
DESIGNED	DRAWN	CHECKED
JRA	RAM	JRA

NO.	REVISION	DATE

SHEET NO.