

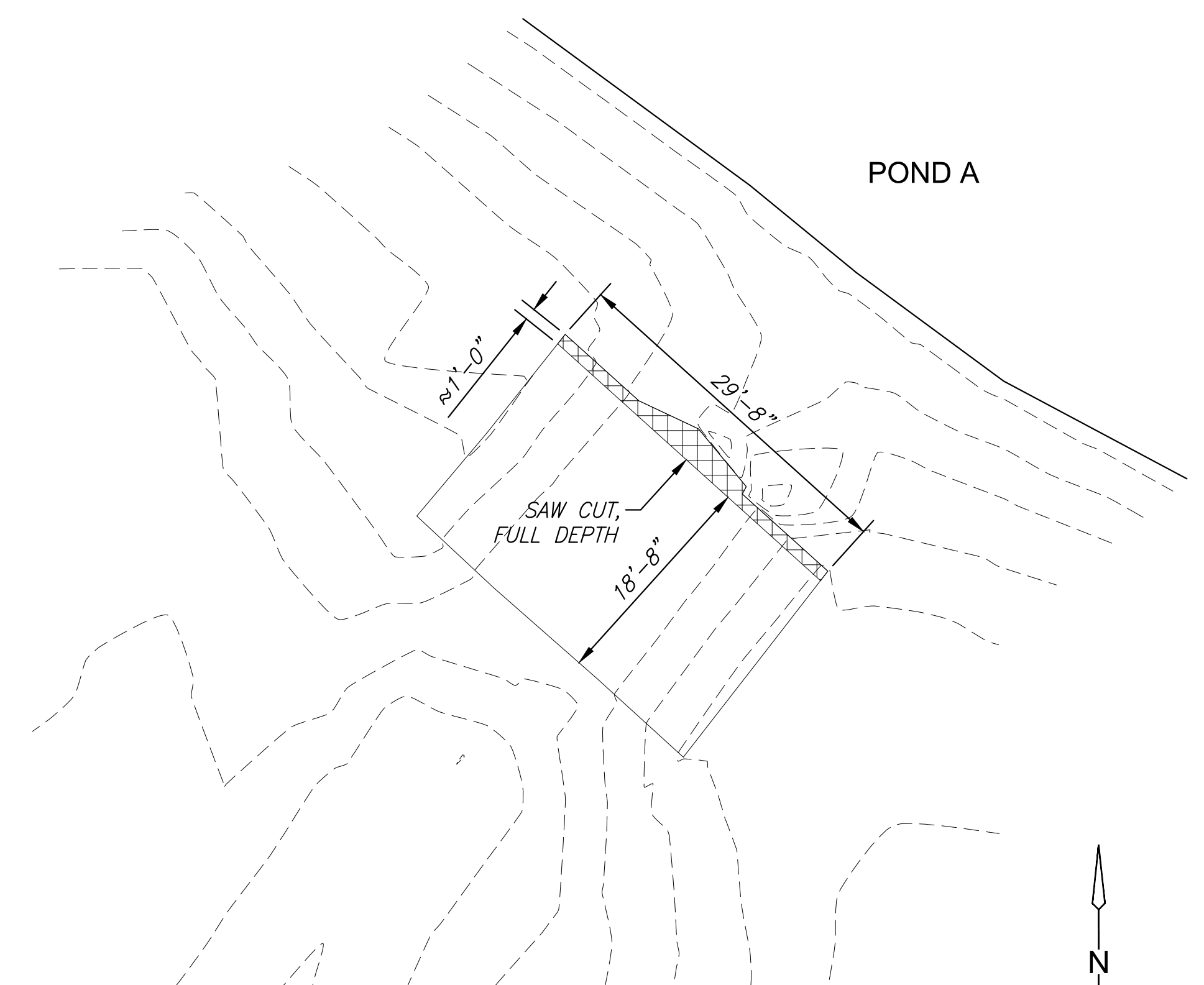
PLOTTED: Thursday, January 20, 2022 @ 06:00PM
 J:\PROJECTS\2019\1010483_COW_MACDONALD GOLF COURSE\190483_CAD\SHS\06 CIVIL\BRIDGE\190483-05-6250.DWG

MACDONALD GOLF COURSE DRAINAGE IMPROVEMENTS
 WICHITA, KS

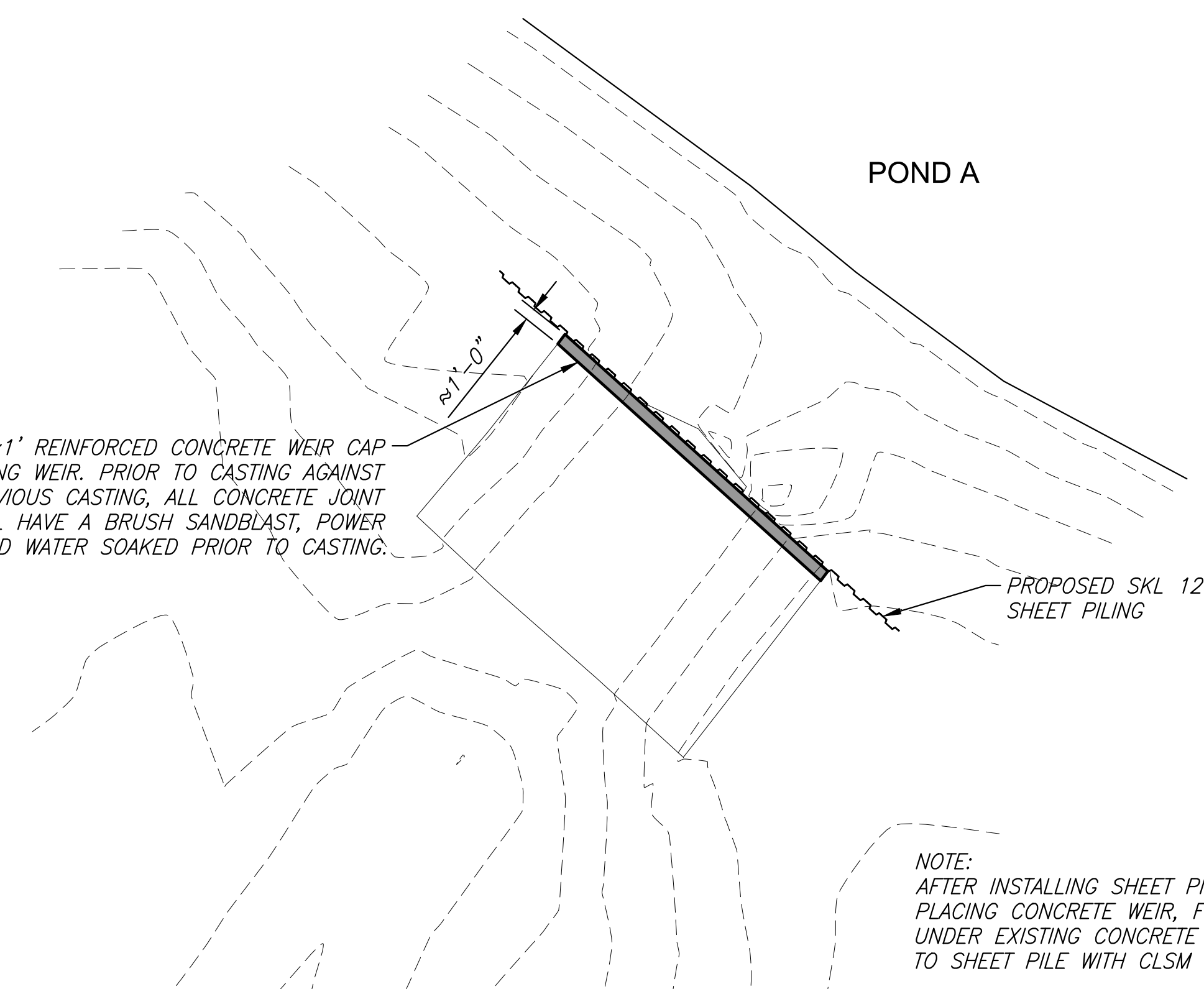
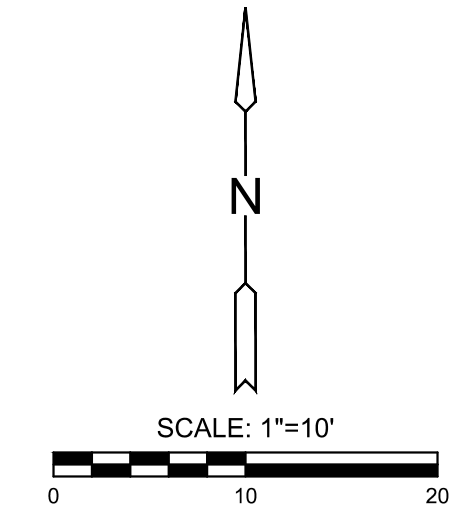
©2022
 MKEC Engineering
 All Rights Reserved
 www.mkec.com
 These drawings and their contents, including, but not limited to, all concepts, designs, & ideas are the exclusive property of MKEC Engineering (MKEC), and may not be used or reproduced in any way without the express consent of MKEC.

SHEET PILE WEIR DETAILS

PROJECT NO.		
DATE	01/20/2022	
SCALE	AS SHOWN	
DESIGNED	KJS	
DRAWN	RAM	
CHECKED	KJS	
NO.	REVISION	DATE
SHEET NO.		
10 OF 24		



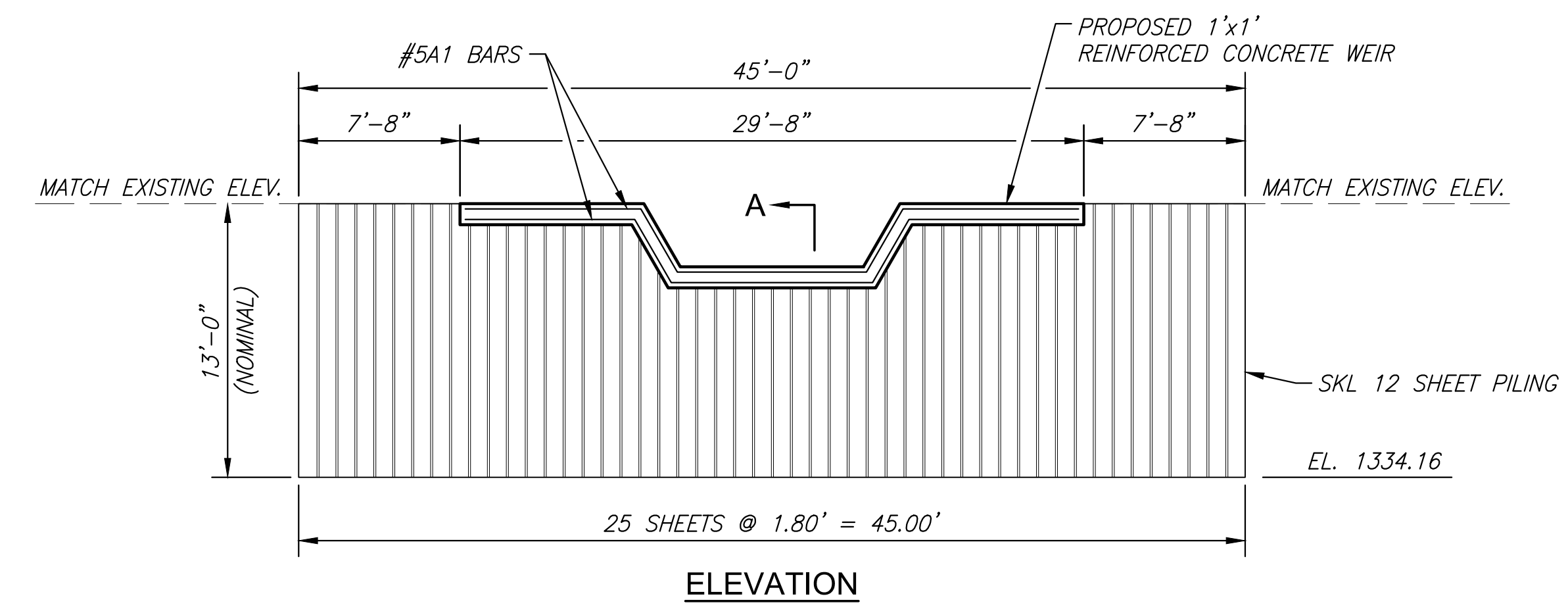
EXISTING WEIR PLAN



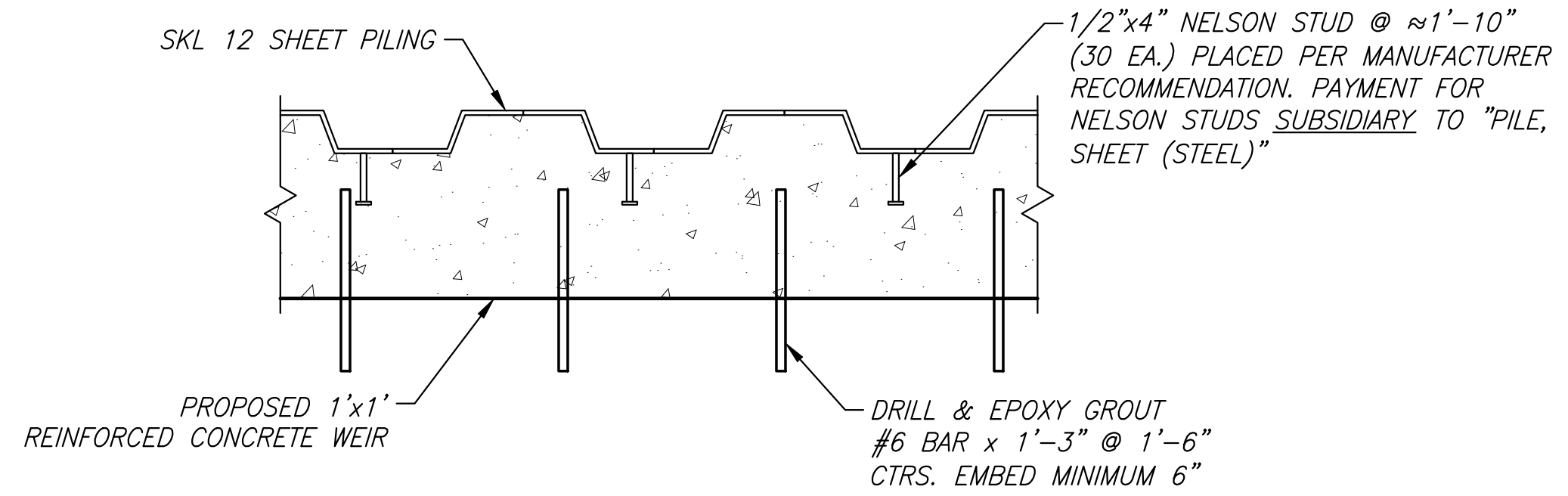
PROPOSED WEIR PLAN

CAST 1'x1' REINFORCED CONCRETE WEIR CAP AGAINST EXISTING WEIR. PRIOR TO CASTING AGAINST A PREVIOUS CASTING, ALL CONCRETE JOINT SURFACES SHALL HAVE A BRUSH SANDBLAST, POWER WASH, AND WATER SOAKED PRIOR TO CASTING.

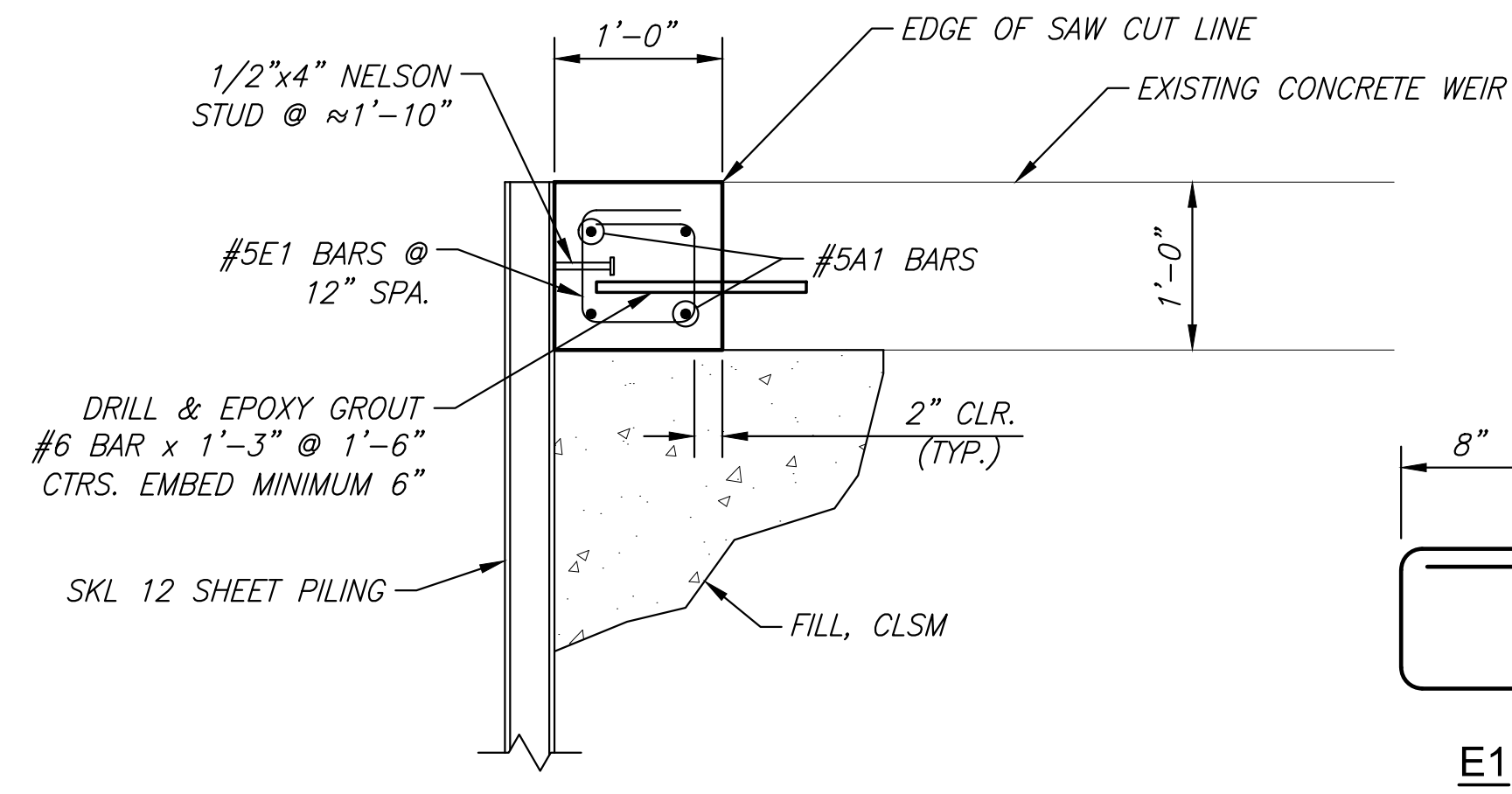
NOTE:
 AFTER INSTALLING SHEET PILE BUT PRIOR TO PLACING CONCRETE WEIR, FILL ANNULAR SPACE UNDER EXISTING CONCRETE WEIR AND ADJACENT TO SHEET PILE WITH CLSM MATERIAL.



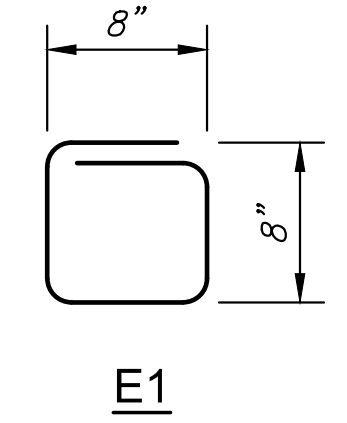
ELEVATION



PART PLAN



SECTION A



BAR BENDING DIAGRAMS

GENERAL NOTES

- UNIT STRESSES:** Grade 4.0 Concrete; $f'_c = 4,000$ p.s.i.
 Reinforcing Steel; $f_y = 60,000$ p.s.i.
 Sheet Pile; $F_y = 50$ k.s.i.
- CONCRETE:** Grade 4.0 Concrete shall be used throughout. Bevel all exposed edges with a $\frac{3}{4}$ inch triangular moulding.
 Prior to casting concrete against a previous casting, all concrete joint surfaces shall have a brush sandblast, power wash, and water soaked prior to casting.
- REINFORCING:** All reinforcing shall conform to ASTM A615, Grade 60. All dimensions relative to reinforcing steel shall be to centerline of bar unless otherwise noted.
 All reinforcing shall be certified (certified mill test reports) according to Section 2601, Type "A" certified, at Kansas Department of Transportation, Standard Specification For State Road & Bridge Construction-2015.
- SHEET PILING:** The steel sheet piling shall be SKL 12 as specified by Nucor Skyline or approved equal. ASTM A572, Grade 50.
- REINFORCING & PILING LENGTH:** The steel items to be field cut to length required by oxy-fuel and cut-off saw methods.

FOR INFORMATION ONLY

BILL OF REINFORCING STEEL

Straight Bars				Bent Bars			
Mark	Size	No.	Length	Mark	Size	No.	Length
A1	#5	4	50'-0"	E1	#5	48	3'-4"

Note: #5A1 shall be field bent and cut to required length

FOR INFORMATION ONLY

SUMMARY OF QUANTITIES

Concrete (Grade 4.0)	2.0 C.Y.
Reinforcing Steel (Gr. 60)	380 Lbs.
Fill, CLSM	10.0 C.Y.

FOR INFORMATION ONLY

STRUCTURAL STEEL SUMMARY

Item	Count	Length (per sheet)	Total Length
Pile, Sheet (Steel)	25 ea.	13'	325'

LEGEND

