

GENERAL NOTES:

- The Contractor shall comply with all applicable safety regulations. All construction shall be completed following current City Standard Specifications and Special Provisions.
- Contractor will be required to provide notice to utility companies a minimum of seventy-two (72) hours prior to any excavation, as follows:

Kansas One-Call 687-2470

The Contractor must notify the following in case of an emergency:

AT&T 1-800-246-8464
 City of Wichita Water & Sewer Dept. 1-316-219-8921
 City of Wichita Stormwater 1-316-268-4090
 City of Wichita Traffic 1-316-268-4034
 Cox Communications 1-888-249-3530
 Evergy 1-800-544-4857
 Kansas Gas Service 1-888-482-4950

- Utility service lines, poles, etc. are to be adjusted as necessary by others prior to construction unless the plans specifically call for their adjustment by the Contractor or unless the plans specifically identify a utility to be adjusted by its owner during construction. Existing utilities and their location, as shown on the plans, represent the best information obtainable for design. The Contractor will be required to work around existing utilities within the right-of-way which do not conflict with proposed construction.

- Rubble from the removal of miscellaneous structures and excess excavation which is to be wasted shall be disposed of on sites to be provided by the Contractor. These sites shall be approved by the Engineer as to suitability, appearance and site location. Locations, in the opinion of the Engineer, that will leave an unsightly appearance will not be approved. All disposal sites must be approved by the Kansas Department of Health and Environment. Material either stockpiled or disposed of in a flood plain will require a Kansas State Board of Agriculture permit. Any material dumped in waters of the United States or wetlands is subject to U.S. Corps. of Engineers permitting regulations. Any material buried or stockpiled beyond approved construction limits will require additional archaeological investigations unless buried in a previously approved borrow location.

- Trees and shrubs in public right-of-way which are in direct conflict with proposed new construction shall be removed by the Contractor with the Engineer's approval. Trees and shrubs which are not in direct conflict with proposed new construction shall be saved and protected from damage.

- The Contractor shall give all property owners and/or tenants of developed property abutting the construction of this project a minimum of ten (10) days notice prior to start of construction.

- The Contractor shall be responsible for preserving property irons. The Contractor will be required to re-establish any property irons which are damaged or destroyed by his construction operations. Such irons shall be re-established by a licensed land surveyor in accordance with state laws.

- If traffic will be impacted by construction, a traffic control plan must be submitted and approved by the City Traffic Engineer, traffic@wichita.gov before construction can begin. The Contractor shall be responsible for all traffic control measures to facilitate construction. All construction zone markings and signage shall conform to the latest version of the Manual on Uniform Traffic Control Devices (MUTCD) as published by the US Dept. of Transportation, Federal Highway Administration. All costs associated with construction markings and signage shall be the Contractors responsibly.

- All elevations shown are NAVD 88.

- All areas disturbed during construction that will not be under proposed pavement shall be restored to match existing conditions.

- The Contractor shall protect from damage and support existing utilities through construction as approved by the utility owner and the Engineer at the contractors expense.

- Contractor shall limit the extent of trench openings overnight and weekends to less than 50 feet.

- No shrink or swell factors have been applied to the earthwork quantities shown on this project. All earthwork quantities are based on raw surface volume comparisons.

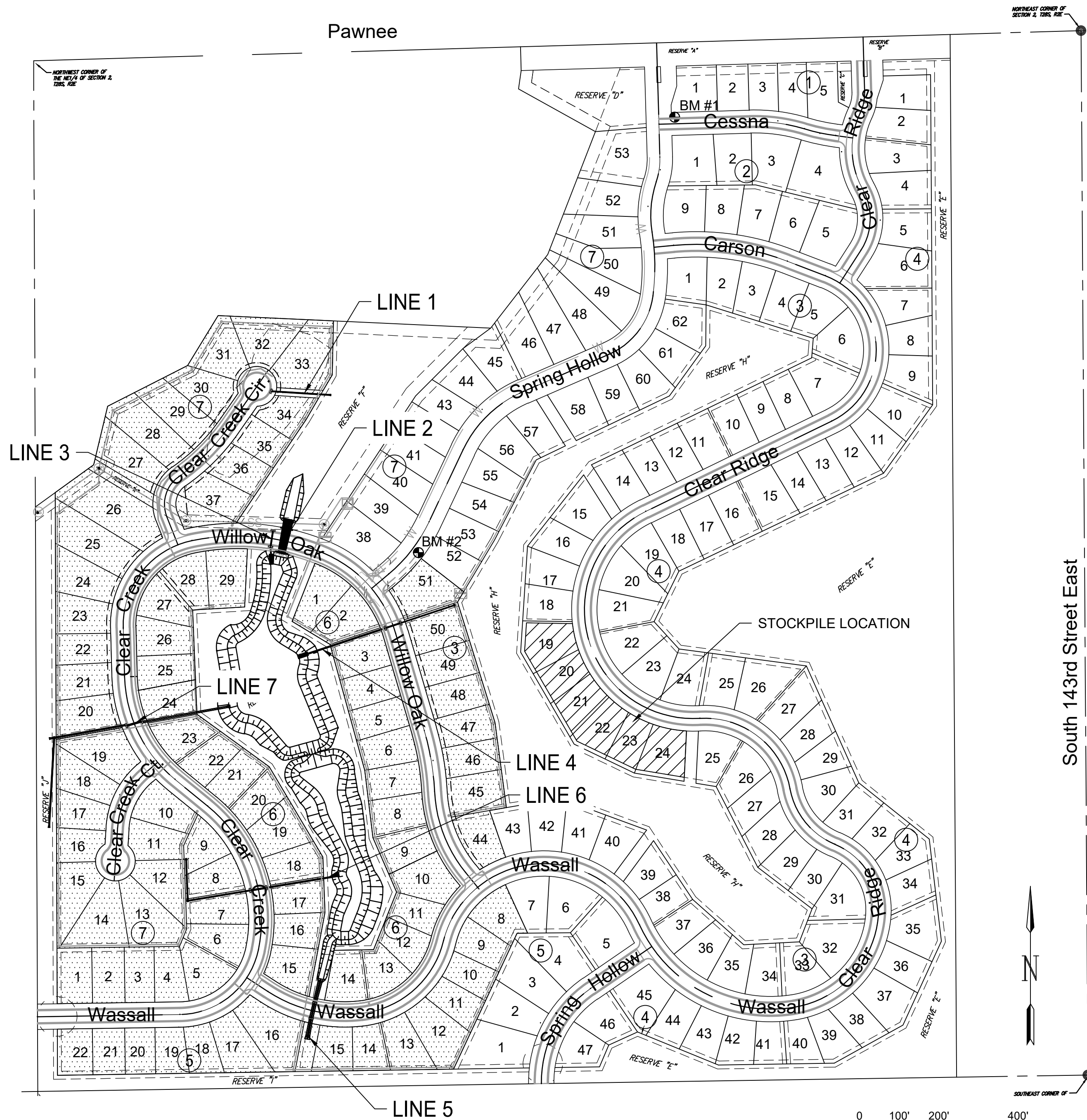
- Excess dirt generated from installation of underground utilities is to remain on site and be stockpiled on Lots 19-24, Block 3. Stockpiles shall NOT be placed within the Street Right-of-Way or any easements.

- All "Reserve" areas shall be seeded with permanent seeding. All other disturbed areas shall be temporary seeding. See Sheet 26 for Seeding Information.

Benchmarks

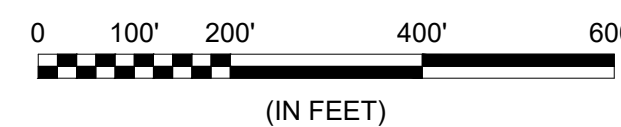
BENCHMARK #1: SQ CUT W/DIVOT NE CURB RETURN
 CESSNA AND SPRING HOLLOW
 ELEVATION = 1316.40 (NAVD88, G12A)

BENCHMARK #2: SQ CUT W/DIVOT EAST TOP OF CURB
 170 FT ± NORTH OF INTERSECTION OF WLOW OAK
 AND SPRING HOLLOW,
 ELEVATION = 1322.58 (NAVD88, G12A)



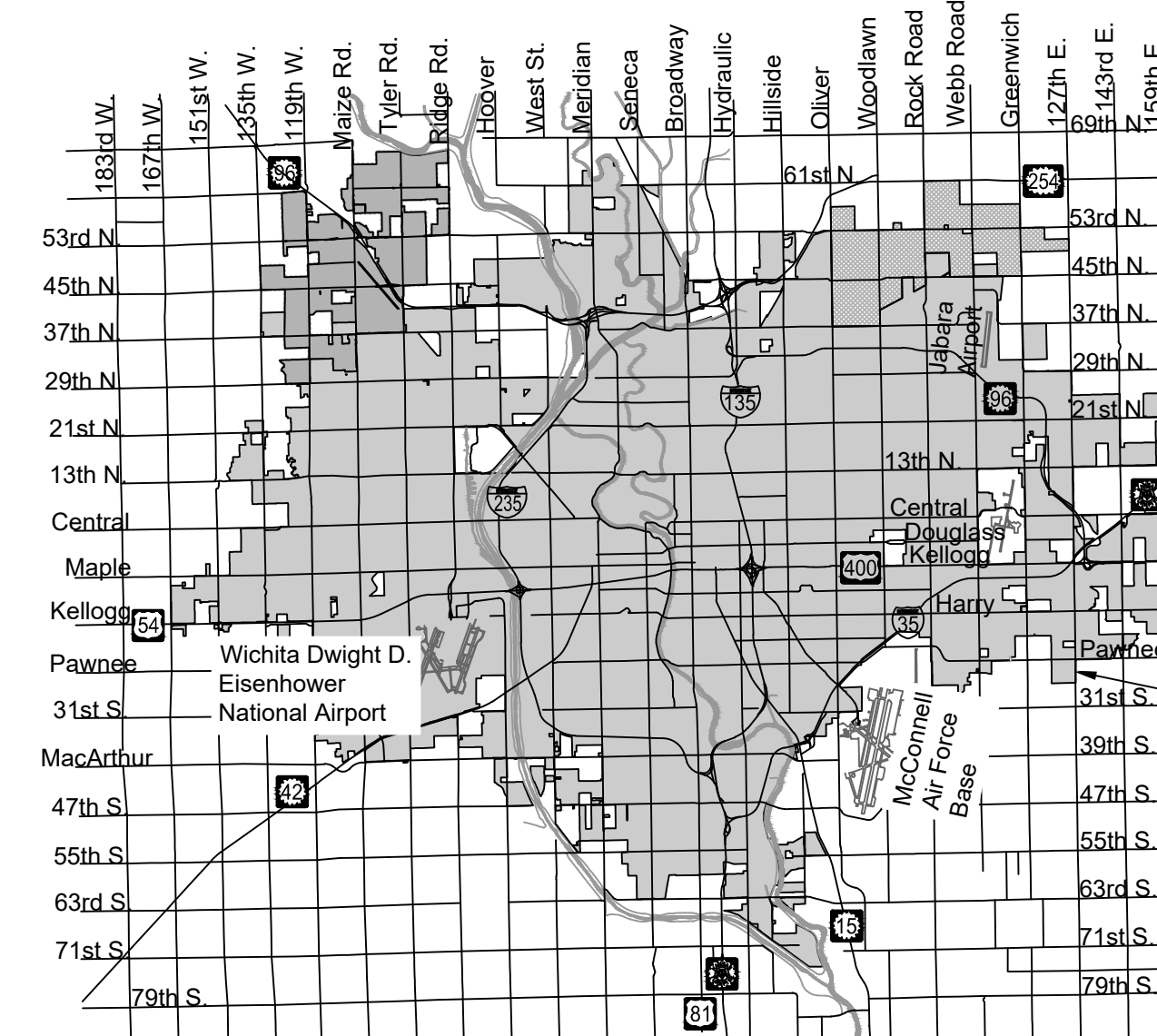
IMPROVEMENT DISTRICT

PLAN SET REVIEWED BY GARVER
Christina Bolin 12/06/2021
 SIGNATURE DATE



STORM WATER DRAIN 425 to serve CLEAR RIDGE PHASE 2 CITY OF WICHITA, KANSAS

Gary Janzen, P.E. City Engineer
 Project Number: 458-2021-085479
 Org Code Number: 47308921
 Munis Number: E1062



Vicinity Map

PROJECT LOCATION

Sheet List Table

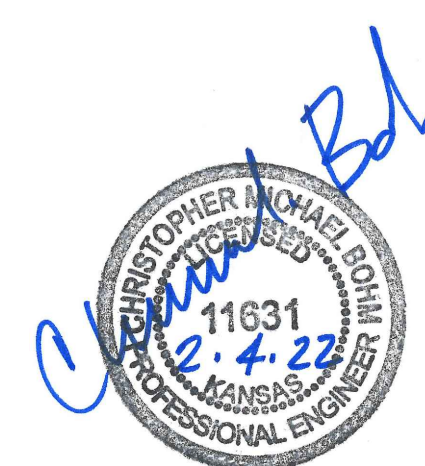
Sheet Number	Sheet Title
1	COVERSHEET
2	GRADING PLAN NORTH
3	GRADING PLAN SOUTH
4	TYPICAL GRADING SECTIONS
5	POND PLANS
6	POND DETAILS
7	SOIL BORING LOGS
8	WEIR WALL
9	HEADWALL DETAILS
10	HANDRAIL DETAILS
11	SWS LINE 1
12	SWS LINE 2
13	SWS LINE 3
14	SWS LINE 4
15	SWS LINE 5
16	SWS LINE 6
17	SWS LINE 7 (1 of 2)
18	SWS LINE 7 (2 of 2)
19	Pre-Cast SWS MH
20	MH Frame & Cover
21	Type 1 CB Inlet 5-10
22	Type 1A CB Inlet 5-10
23	Reinf Conc SWS MH
24	Backyard Inlet
25	END SECTION GRATE
26	SEEDING & TESTING NOTES
27	COORDIANTE MAP
28	ADDITION COORDIANTE MAP
29	ADDITION COORDIANTE TABLE
30	EROSION CONTROL PLAN - SWD
31	EC-SILT FENCE
32	EC-DITCH CHECK
33	EC-STREET IMPROVEMENTS
34	EC-SUBDIVISION DEVELOPMENT
35	EC-CURB INLET & CONST. ENT.
36	PLAT (2 OF 2) SWS
37	PLAT (1 OF 2) SWS

EARTHWORK QUANTITIES	
Description	Cu. Yds.
Cut	82760
Fill	53821
Net	28939

Stormwater Certification:
 New Development or Redevelopment (Circle One)
 Stormwater Permit # SW2022-0006
 NOI Permit # SWA20-0098

These construction plans were prepared in accordance with the current Stormwater Management Regulations as set forth in the City of Wichita's Stormwater Management Ordinance 16.32 and the policies/guidelines presented in the Wichita/Sedgwick County Stormwater Manual.

Site Area (Acres) = 50 ACRES
 Disturbed Area (Acres) = 43 ACRES
 Water Quality Treatment: WET POND
 Downstream Channel Protection: WET POND
 Detention: DETENTION
 The BMP used for this development is WET POND.



FEB. 2022

PLANS PREPARED BY



NOTE: All coordinates listed are modified NAD83 Kansas State Plane Zone South unless otherwise noted. To convert listed coordinates to NAD83 Kansas State Plane Zone South coordinates multiply the northing and easting by the project scale factor of 0.999888366. Elevation datum is NAVD88 Geoid 12B unless otherwise noted.