

# GENERAL NOTES:

- Contractor will be required to provide notice to utility companies a minimum of forty-eight (48) hours prior to any excavation, as follows:  
 Kansas One-Call 687-2470  
 Cox Communications 262-4270  
 Kansas Gas Service 1-888-482-4950  
 Energy Energy 383-8650  
 Aquila Energy 1-800-303-0357  
 ATT 268-2245  
 City of Wichita Water Dept. 268-4563  
 City of Wichita Sewer Maint. 268-4024  
 City of Wichita Storm Sewer Maint. 268-4090  
 City of Wichita Traffic Maint. 268-4034  
 Conoco Phillips Pipeline Co. 1-877-267-2290  
 Southern Star Pipeline Co. 529-6600  
 Kinder-Morgan Pipeline Co. 1-888-844-5658

- Utility service lines, poles, valve boxes, meters, and etcetera are to be adjusted as necessary by others prior to construction unless the plans specifically call for their adjustment by the Contractor or unless the plans specifically identify a utility to be adjusted by its owner during construction. Existing utilities and their location, as shown on the plans, represent the best information obtainable for design. The Contractor will be required to work around existing utilities within the right-of-way which do not conflict with proposed construction.

- Rubble from the removal of miscellaneous structures and excess excavation which is to be wasted shall be disposed of on sites to be provided by the Contractor. These sites shall be approved by the Engineer as to suitability, appearance and site location. Locations, in the opinion of the Engineer, that will leave an unsightly appearance will not be approved. All disposal sites must be approved by the Kansas Department of Health and Environment. Material either stockpiled or disposed of in a flood plain would require a Kansas State Board of Agriculture permit. Any material dumped in waters of the United States or wetlands is subject to U.S. Corps of Engineers permitting regulations. Any material buried or stockpiled beyond approved construction limits would require additional archaeological investigations unless buried in a previously approved borrow location.

- Trees and shrubs in public right-of-way which are in direct conflict with proposed new construction shall be removed by the Contractor ONLY with the Developer or Baughman Company approval. Trees and shrubs which are not in direct conflict with proposed new construction shall be saved and protected from damage.

- The Contractor shall give all property owners and/or tenants of developed property abutting the construction of this project a minimum of ten (10) days notice prior to start of construction.

- The Contractor shall be responsible for preserving property irons. The Contractor will be required to re-establish any property irons which are damaged or destroyed by his construction operations. Such irons shall be re-established by a licensed Land Surveyor in accordance with state laws.

- All existing and proposed erosion control measures including silt fencing, erosion control mat, straw bales, inlet barriers, and const. entrance shall be maintained throughout construction by the Contractor and until project is accepted by the City of Wichita. The on-site Engineer shall complete weekly reports on the status of erosion control measures. The Contractor shall be required to comply with maintenance and/or replacement of erosion control measures as determined by the on-site Engineer until project is accepted by City of Wichita.

- A saw cut of at least one-half the depth of existing surface courses or one-fourth the depth of the existing total pavement thickness shall be provided at locations where proposed construction abuts the existing surface course or pavement for which partial removal of that surface or pavement is required. Sawed joint to facilitate removal within three (3) feet of existing joints will not be permitted and for such instances the limits of removal shall extend to the existing joint. Such saw cuts will not be paid for directly and this cost shall be considered as subsidiary to the removal of the surface or pavement.

- All areas disturbed during construction shall be seeded as follows:  
 (Temporary Seeding)  
 SEED -- Rye grass (PLS) -- 5 Lbs/1,000 Sq Ft.

- The Contractor shall adjust valve boxes as necessary to match proposed grade. Cost to be included in bid item, "Site Restoration."

- The Contractor shall drain any standing water in sump areas of the proposed pavement. Contractor shall overexcavate and recompact these areas as required to maintain compaction of 95% Standard Proctor Density. Cost to be incidental to pavement.
- Limits of earthwork shall match existing ground elevations at the right-of-way line unless otherwise noted on the plans with a new finished grade elevation. When a new finished grade elevation is shown, the earthwork shall extend one foot beyond the right-of-way line and then slope up or down using permissible slopes to match the existing ground surface.
- The Developer for this project is Paul Gray 2024 N Woodlawn Blvd Suite 200, Wichita, KS 67208 (316) 978-9047 email: paul@grayconbg.com
- Excess excavation shall be stockpiled or spread on-site at a location determined by the Developer or Design Engineer.
- The construction of the air bridge is required to enter the site when crossing the NuStar Pipeline. However, the contractor may choose not cross the NuStar Pipeline and find an alternate entrance. If the contractor finds an alternate entrance, the bid item for "Air Bridge" shall be removed and not paid.

### Air Bridge Construction Requirements:

- The contractor shall supply all material required to construct the air bridge.
- The contractor shall construct the air bridge at proposed location.
- During construction of the entrance drive SubBase, which provides roughly 36" of cover over NuStar Pipeline, a 7,500 lb max allowable concentrated surface load is allowed when crossing pipeline.
- During construction of the entrance drive Top of Rock, which provides roughly 42" of cover at the top of the 5" Rock Base over NuStar Pipeline, a 9,000 lb max allowable concentrated surface load is allowed when crossing pipeline.
- The contractor must provide NuStar contact with equipment list prior to construction.

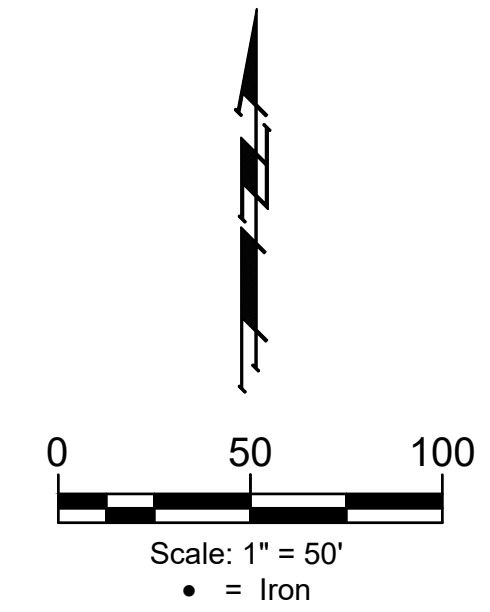
# STREET PAVING FOR 21ST CT NORTH with Incidental Stormwater Sewer to serve MONARCH LANDING 5TH ADDITION

21ST CT N: From the north line of 21st St. N., north and west to and including the cul-de-sac

## CITY OF WICHITA, KANSAS

Gary Janzen, P.E. City Engineer  
 Project Number: 472-2021-085737  
 Org. Code Number: 47415821  
 Muis. Number: E1087

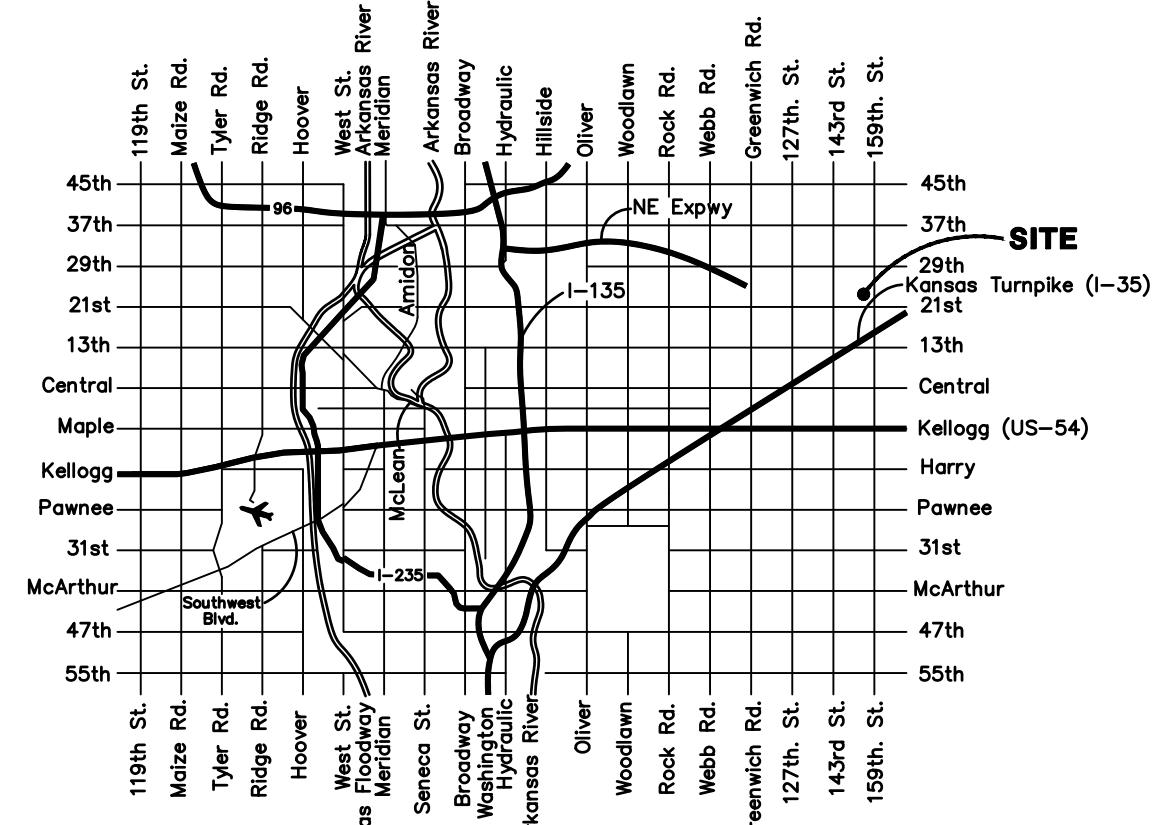
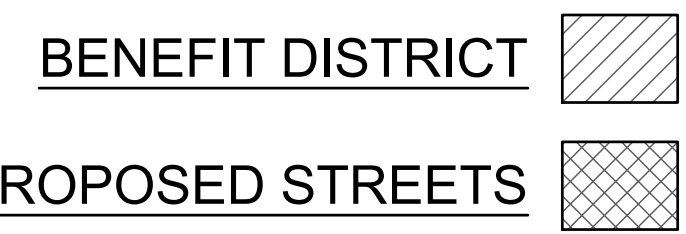
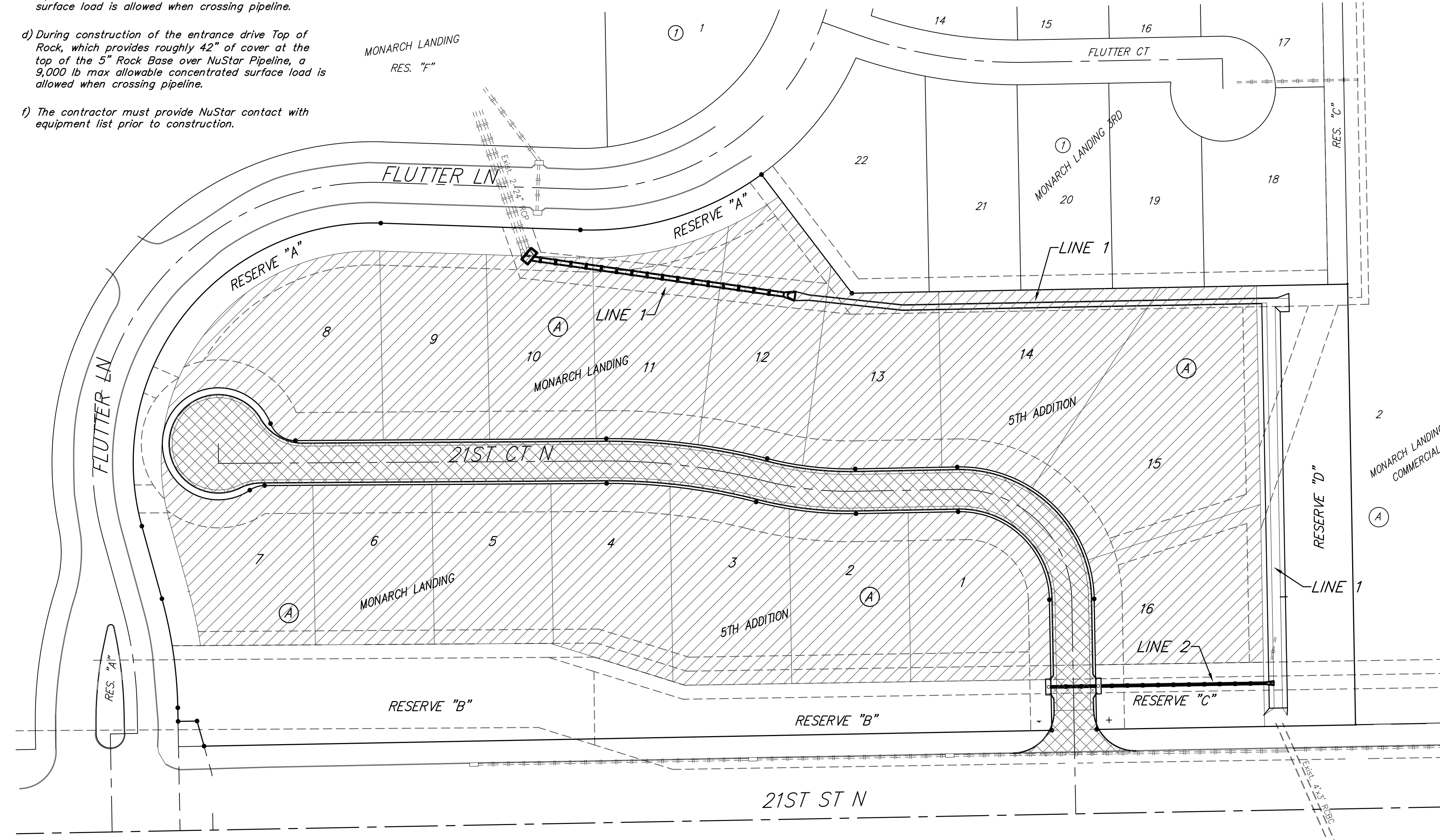
Project Earthwork Totals (Cubic Yards, Unadjusted)			
	Excavation	Fill	Excavation, Borrow
TOTAL:	2,970	10,486	7,516
Total Project Length 764.2 L.F. = 0.14 Miles			



**BENCHMARK**  
 CITY OF WICHITA BENCHMARK  
 DISC ON THE WEST END OF  
 THE RCB HEADWALL, NORTH  
 OF 21ST ST 57'.  
 ELEV. = 1368.37 NAVD88  
 BRASS DISC ON THE TOP OF  
 CURB ON THE EAST SIDE OF  
 CURB INLET, SOUTH SIDE OF  
 FLUTTER LANE, AND NORTH OF  
 LOT 10, BLOCK A, MONARCH  
 LANDING 5TH ADDITION.  
 ELEV. = 1370.97 NAVD88

### SHEET INDEX

Title Sheet	1
Asphalt Paving Detail	2
Curb & Gutter Details	3
Valley Gutter Details	4
Wheelchair Ramp Details	5
Sign Detail	6
21St CT North	7-8
SWS Line 1	9-10
SWS Line 2	11
Erosion Control	12
Flume Details	13
Erosion Control BMP Details	14-18
Type 1-A Curb Inlet Detail	19
Inlet Manhole Detail	20
Ring & Cover Detail	21
Coordinate Sheet	22
Copy of Plat	23



### VICINITY MAP



**BAUGHMAN COMPANY**  
 315 Ellis St. Wichita, KS 67211 316-262-7271  
 BaughmanCo.com

E:\Projects\Monarch Landing 5th Addition\_Engineering\STR\_17-07-E720.dwg