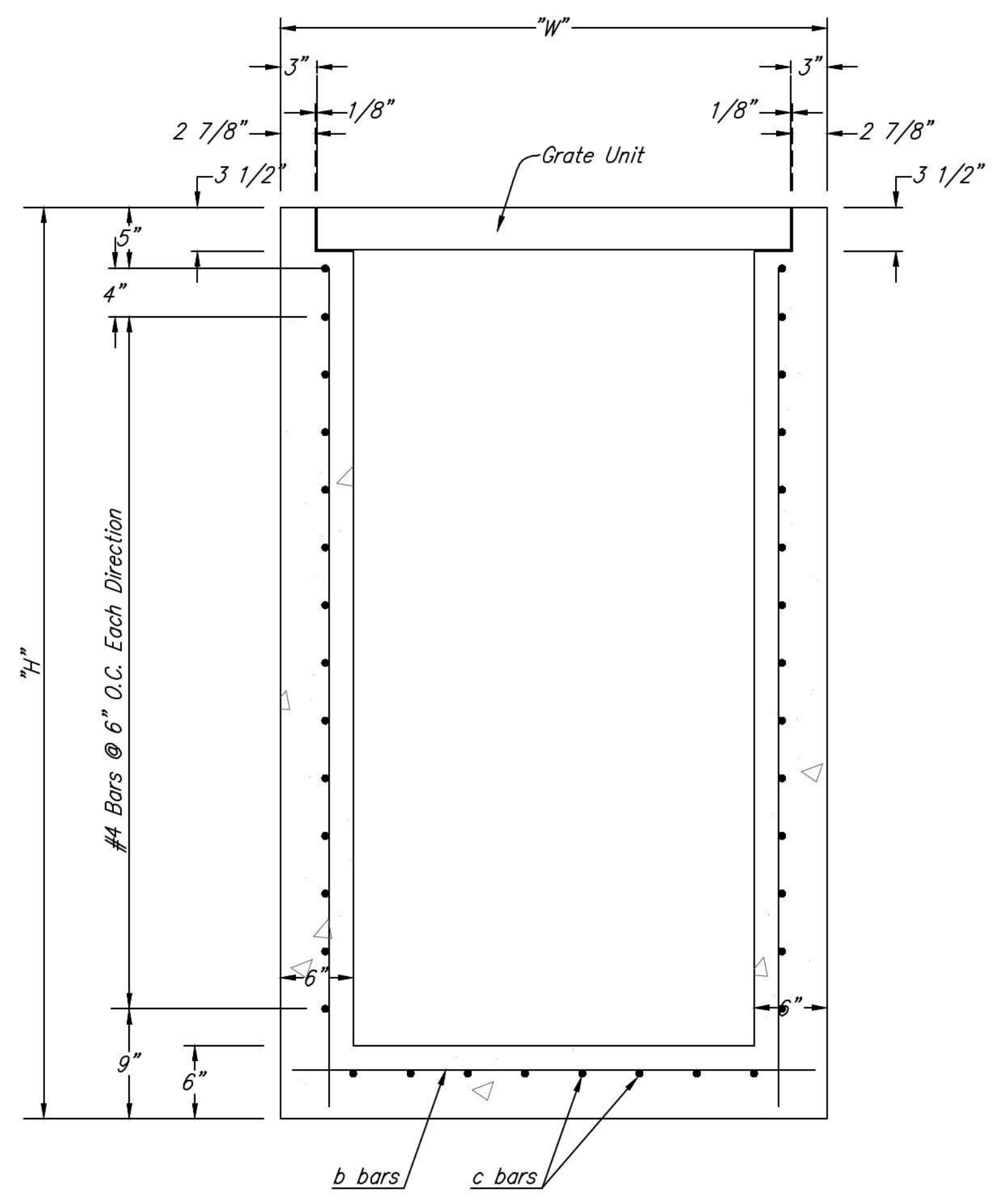


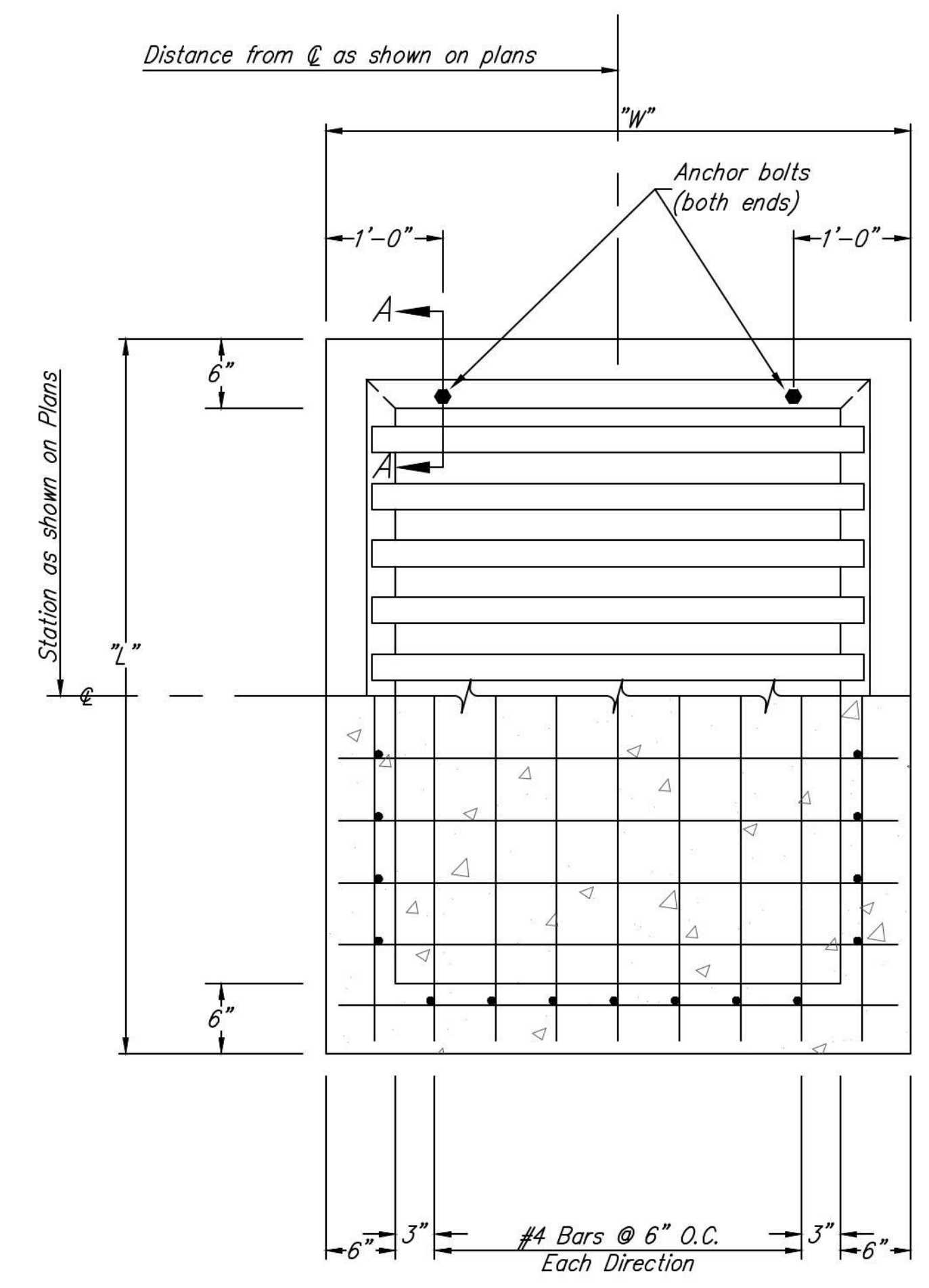
| PIPE DIMENSIONS AND SPACING |             |                                  |    |
|-----------------------------|-------------|----------------------------------|----|
| L x W                       | No. of Bars | Dia. x Length x Spacing          | *  |
| 11'-0" x 6'-0"              | 20          | 2 1/2"Ø x 5'-5" pipes @ 6" ctrs. | 6" |

**GENERAL NOTE**

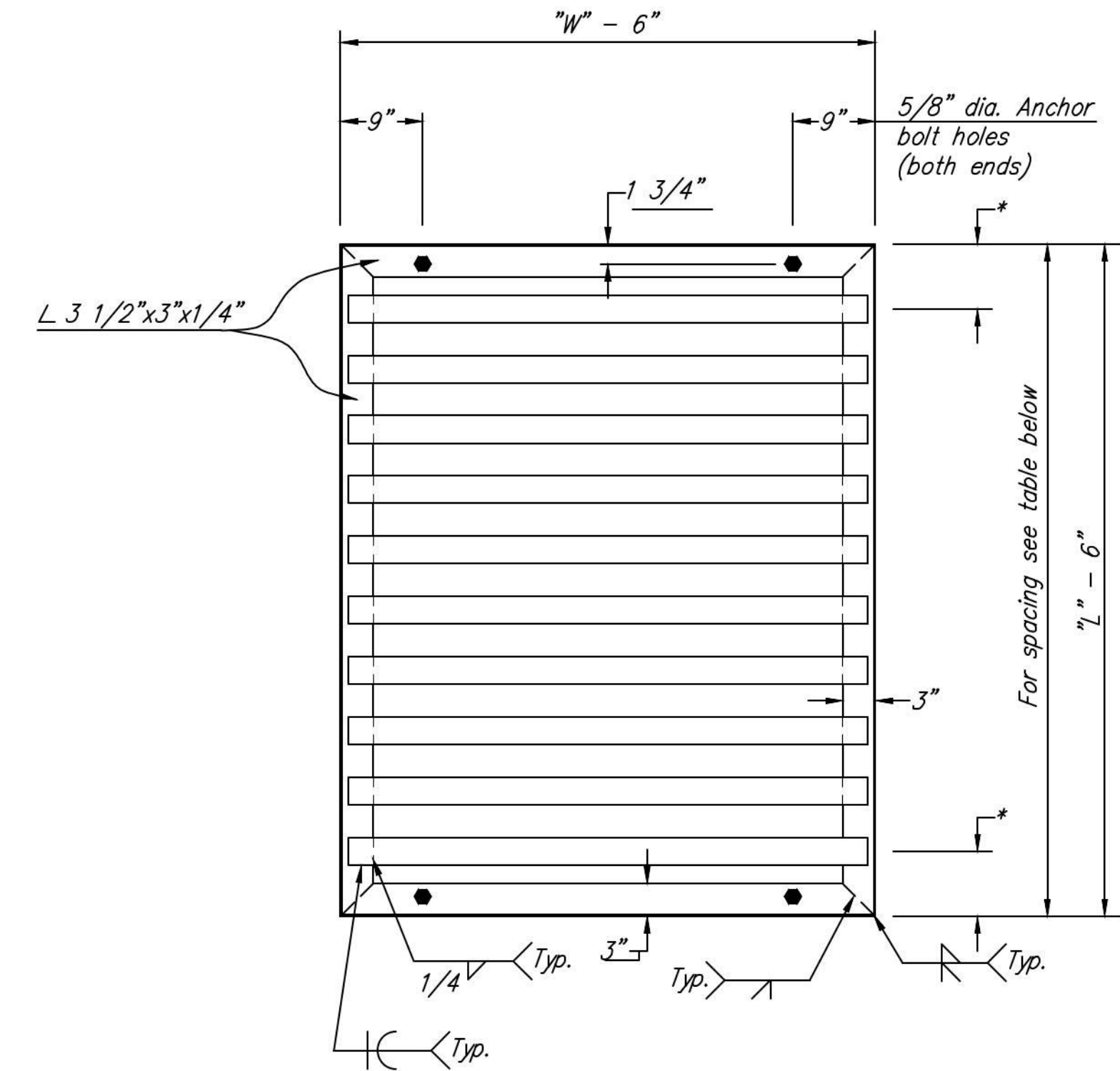
1. Use Class A Concrete throughout. All exposed edges shall be finished with an edging tool.
2. At the Contractors option, Class A Concrete (AE) or mix used in concrete pavement may be used throughout.
3. In general, pipes will enter and leave the manhole at various positions. Where possible bend bars around pipes.
4. Floor of inlet shall be shaped as shown in various "Examples" on Standard Type 1A Curb Inlet Detail.
5. Concrete used for shaping shall be unreinforced Class "A" Concrete or concrete pavement mix. No addition in concrete quantities shall be made for shaping floor of inlets.
6. No deductions in concrete quantities shall be made for pipe openings.
7. All bars are #4 @ 6" spacing and shall have a minimum clearance of 1-1/2" unless otherwise noted on the plans.
8. The top of the manhole shall be sloped slightly to approximately fit the ground line or other conditions as directed by the Engineer.
9. The grate shall be fabricated from standard or commercial grade structural steel and black steel pipe.
10. The unit shall be hot dipped, galvanized after fabrication, in accordance with ASTM A123 except the weight of coating shall average not less than 2.0 ounces per square foot of actual surface and no individual test shall show less than 1.8 ounces of coating per square foot of actual surface area.



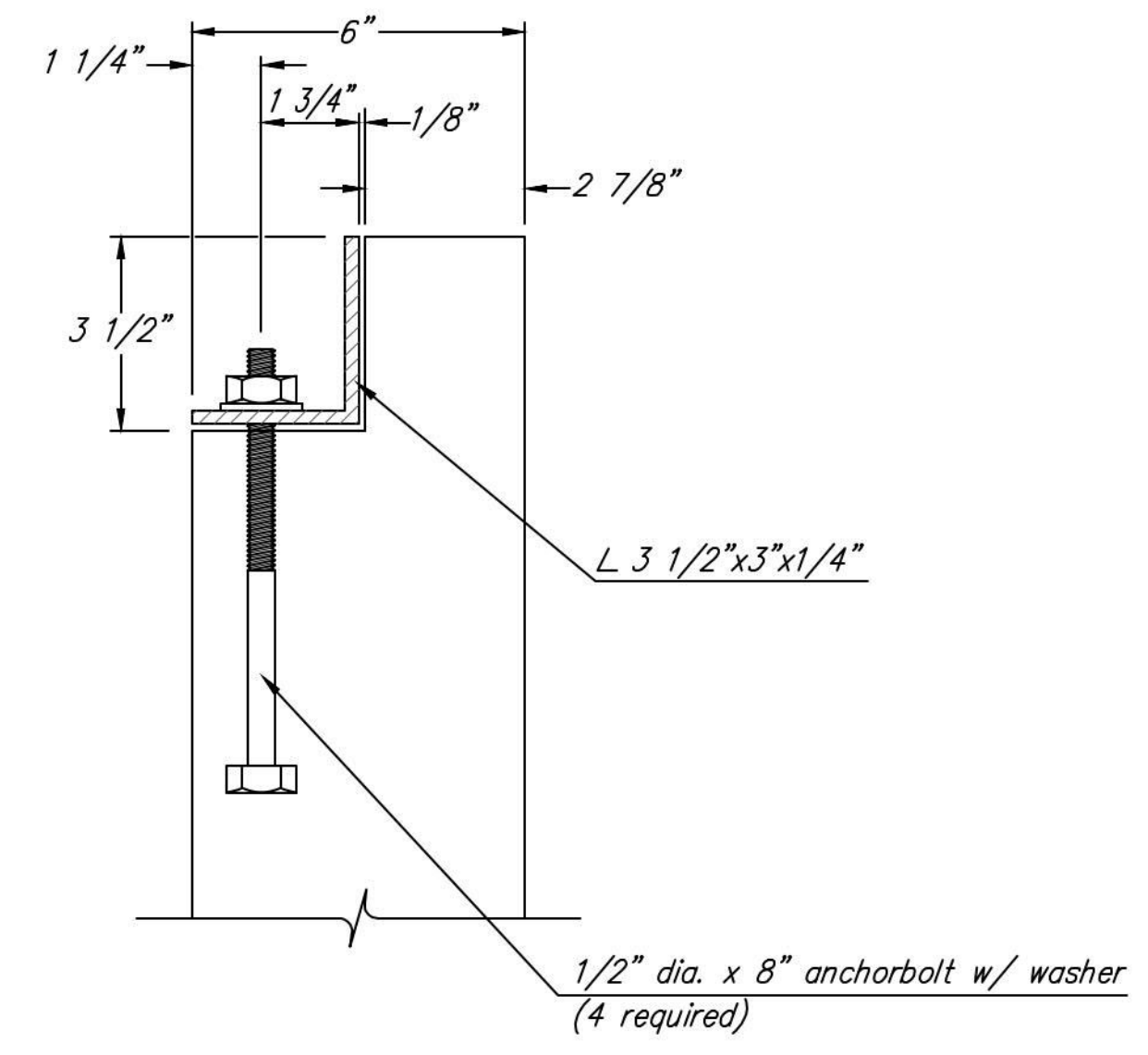
**SECTION**



**PLAN AND SECTION**



**GRATE UNIT DETAILS**



**SECTION A-A**





**BAUGHMAN COMPANY**

315 Ellis St.  
Wichita, KS 67211  
316-262-7271  
BaughmanCo.com

MONARCH LANDING  
5TH ADDITION

**INLET  
MANHOLE  
DETAILS**

STREET / SWS  
IMPROVEMENTS

PROJECT NUMBER:

DESIGN: DMV DRAWN: JAK  
DATE: Jul. 16, 2021

SHEET **20** OF **26**

File: C:\Projects\Monarch\_Landing 5th Addition\_Engineering\inletmh.dwg