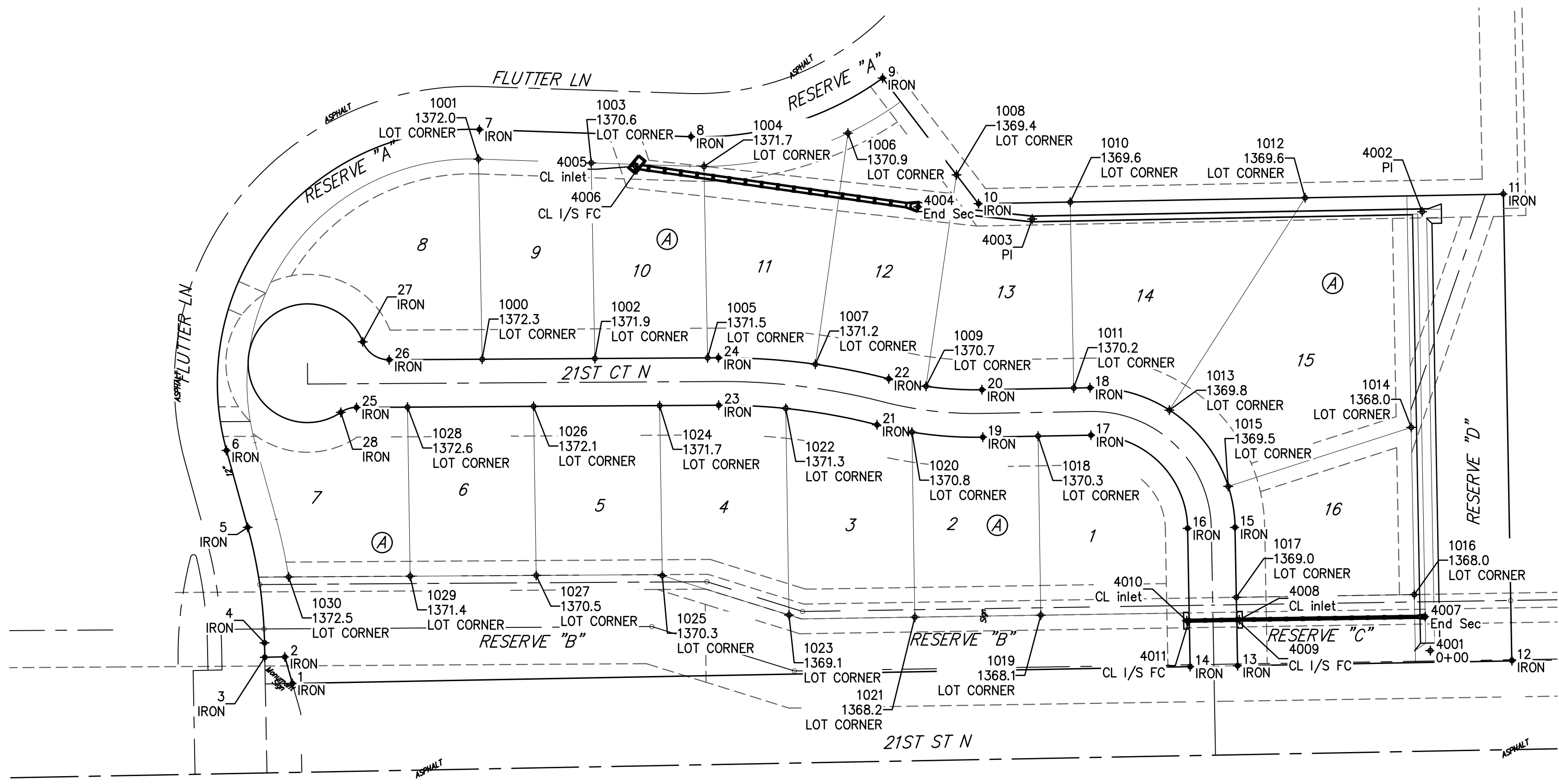


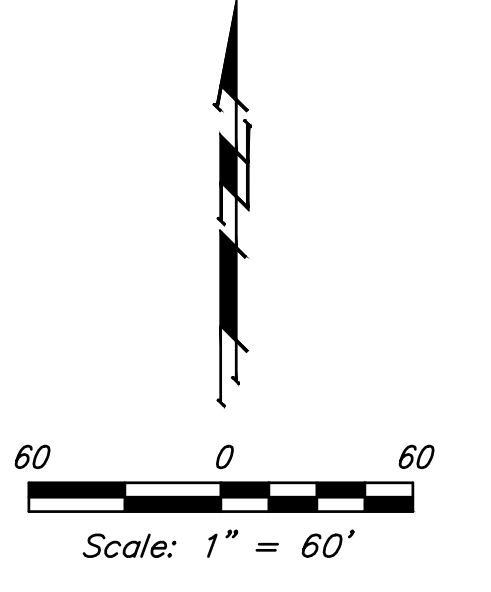
BENCHMARK:
 CITY OF WICHITA BENCHMARK
 DISC ON THE WEST END OF
 THE RCBC HEADWALL, NORTH
 OF 21ST ST 57'.
 ELEV. = 1368.37 NAVD88

**BRASS DISC ON THE TOP OF
 CURB ON THE EAST SIDE OF
 CURB INLET, SOUTH SIDE OF
 FLUTTER LANE, AND NORTH OF
 LOT 10, BLOCK A, MONARCH
 LANDING 5TH ADDITION.
 ELEV. = 1370.97 NAVD88**



Point #	Northing	Easting	Description
1025	5,141.09	5,300.77	LOT CORNER
1	5,068.32	5,051.34	IRON
9	5,476.61	5,449.37	IRON
2	5,086.23	5,046.29	IRON
1026	5,255.23	5,213.99	LOT CORNER
3	5,085.98	5,032.74	IRON
1027	5,141.24	5,215.76	LOT CORNER
4	5,095.73	5,032.56	IRON
1028	5,254.69	5,128.99	LOT CORNER
1029	5,140.70	5,130.76	LOT CORNER
5	5,173.65	5,021.24	IRON
1030	5,140.19	5,048.80	LOT CORNER
6	5,225.47	5,006.91	IRON
7	5,441.95	5,177.47	IRON
8	5,437.16	5,320.12	IRON
10	5,391.94	5,513.99	IRON
11	5,398.51	5,867.88	IRON
12	5,083.75	5,873.73	IRON
13	5,080.28	5,688.72	IRON
14	5,079.68	5,656.72	IRON
15	5,173.58	5,686.98	IRON
16	5,172.98	5,654.99	IRON
17	5,235.78	5,589.81	IRON
18	5,267.77	5,589.21	IRON
19	5,234.42	5,516.92	IRON
20	5,266.42	5,516.33	IRON
21	5,242.81	5,445.55	IRON
22	5,273.79	5,453.54	IRON
23	5,256.01	5,338.80	IRON
24	5,288.01	5,338.60	IRON
25	5,254.48	5,094.56	IRON
26	5,286.62	5,116.64	IRON
27	5,298.74	5,098.80	IRON
28	5,251.19	5,084.00	IRON
4001	5,090.49	5,818.64	0+00
4002	5,386.49	5,813.14	PI
4003	5,381.61	5,550.22	PI
4004	5,389.78	5,473.33	End Sec
4005	5,417.14	5,282.69	CL inlet
4006	5,414.88	5,283.75	CL I/S FC

Point #	Northing	Easting	Description	Elevation
1025	5,141.09	5,300.77	LOT CORNER	1370.3
1001	5,421.96	5,176.80	LOT CORNER	1372.0
1026	5,255.23	5,213.99	LOT CORNER	1372.1
1002	5,287.49	5,255.30	LOT CORNER	1371.9
1027	5,141.24	5,215.76	LOT CORNER	1370.5
1028	5,254.69	5,128.99	LOT CORNER	1372.6
1029	5,140.70	5,130.76	LOT CORNER	1371.4
1030	5,140.19	5,048.80	LOT CORNER	1372.5
1000	5,287.01	5,179.31	LOT CORNER	1372.3
1003	5,419.41	5,252.85	LOT CORNER	1370.6
1004	5,417.04	5,328.90	LOT CORNER	1371.7
1005	5,287.96	5,331.30	LOT CORNER	1371.5
1006	5,439.47	5,425.95	LOT CORNER	1370.9
1007	5,283.63	5,404.01	LOT CORNER	1371.2
1008	5,411.32	5,499.14	LOT CORNER	1369.4
1009	5,268.77	5,478.60	LOT CORNER	1370.7
1010	5,393.00	5,575.88	LOT CORNER	1369.6
1011	5,267.57	5,578.21	LOT CORNER	1370.2
1012	5,395.90	5,734.23	LOT CORNER	1369.6
1013	5,252.68	5,642.70	LOT CORNER	1369.8
1014	5,241.04	5,805.75	LOT CORNER	1368.0
1015	5,201.25	5,682.37	LOT CORNER	1369.5
1016	5,128.31	5,807.84	LOT CORNER	1368.0
1017	5,126.44	5,687.86	LOT CORNER	1369.0
1018	5,235.12	5,554.15	LOT CORNER	1370.3
1019	5,114.39	5,556.03	LOT CORNER	1368.1
1020	5,237.86	5,469.10	LOT CORNER	1370.8
1021	5,113.07	5,471.04	LOT CORNER	1368.2
1022	5,253.84	5,384.03	LOT CORNER	1371.3
1023	5,114.50	5,386.19	LOT CORNER	1369.1
1024	5,255.76	5,298.99	LOT CORNER	1371.7



**BAUGHMAN
 COMPANY**

315 Ellis St.
 Wichita, KS 67211
 316-262-7271
 BaughmanCo.com

MONARCH LANDING
 5TH ADDITION

COORDINATE

STREET / SWS
 IMPROVEMENTS

PROJECT NUMBER:
 472-2021-085737

DESIGN: NBW DRAWN: CDW

DATE: Jan. 26, 2022

SHEET OF
22 23

File: E:\Projects\Monarch Landing 5th Addition - Engineering\STR-17-07-ET30.dwg