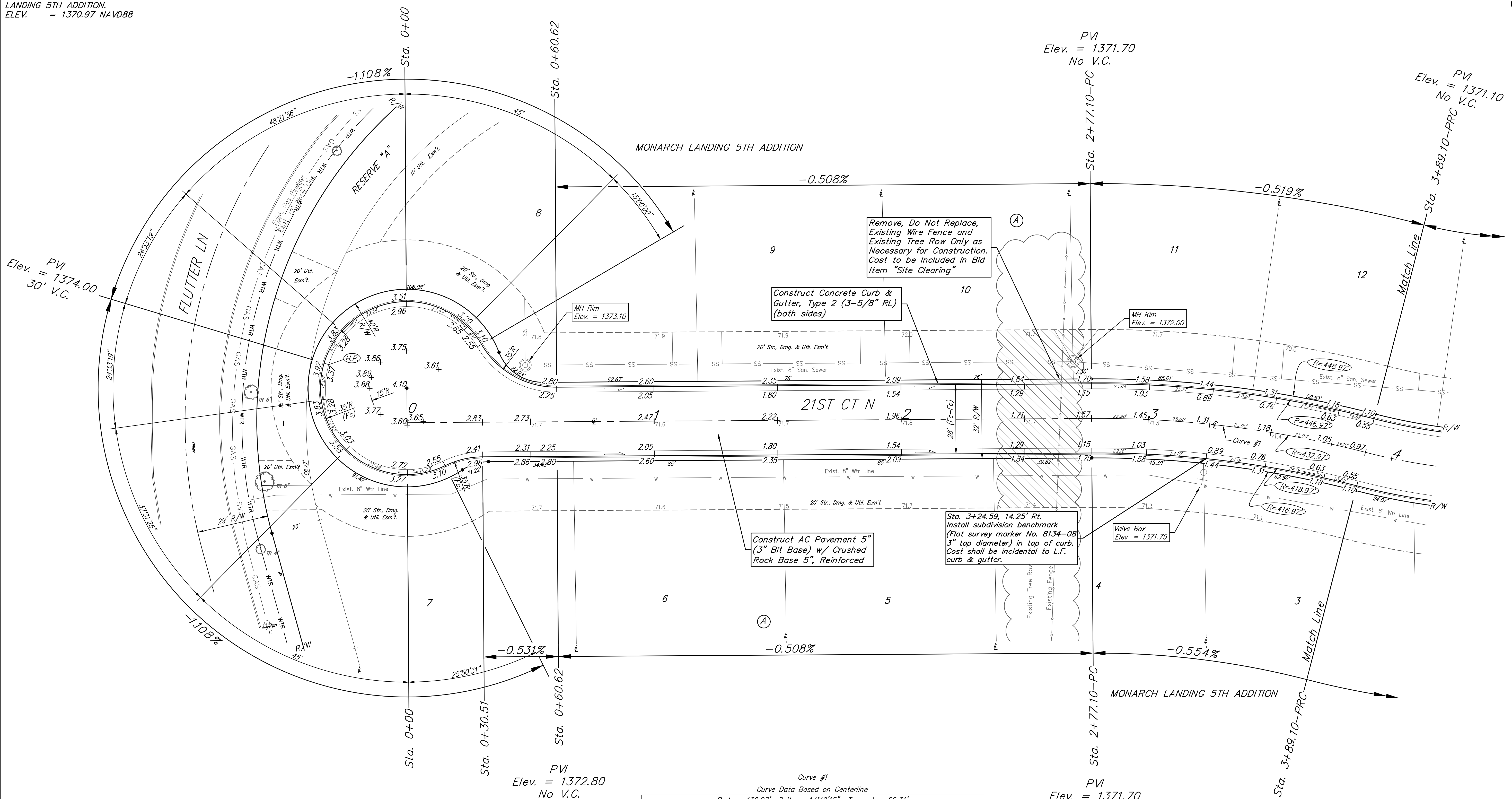
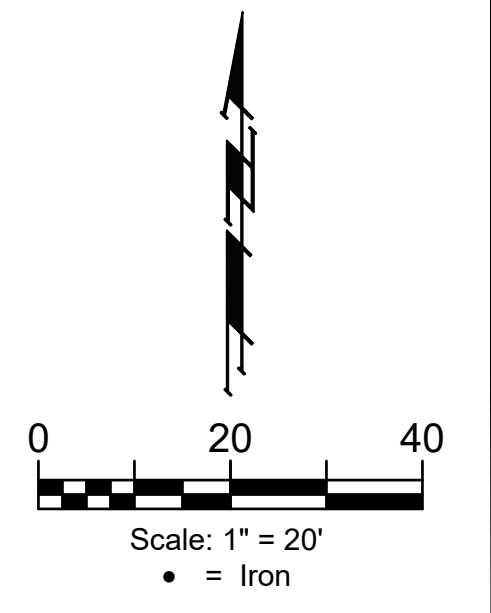


BENCHMARK:
 CITY OF WICHITA BENCHMARK
 DISC ON THE WEST END OF
 THE RCBC HEADWALL, NORTH
 OF 21ST ST 57'.
 ELEV. = 1368.37 NAVD88

BRASS DISC ON THE TOP OF
 CURB ON THE EAST SIDE OF
 CURB INLET, SOUTH SIDE OF
 FLUTTER LANE, AND NORTH OF
 LOT 10, BLOCK A, MONARCH
 LANDING 5TH ADDITION.
 ELEV. = 1370.97 NAVD88



Curve #1
 Curve Data Based on Centerline
 Rad. = 432.97' Delta = 14°49'15" Tangent = 56.31'
 Arc = 112.00' L.C. = 111.69' Def./Ft. = 3.96987 Min.

Station	Arc	Face Chord Lengths		Defl.	Total Defl.
		8' Left	8' Right		
2+77.10	-	-	-	0'00"00"	0'00"00"
3+00.00	22.90'	24.06'	21.73'	1'30"55"	1'30"55"
3+25.00	25.00'	26.27'	23.73'	1'39"14"	3'10"09"
3+50.00	25.00'	26.27'	23.73'	1'39"15"	4'49"24"
3+75.00	25.00'	26.27'	23.73'	1'39"15"	6'28"39"
3+89.10	14.10'	14.82'	13.38'	0'55"58"	7'24"37"

Subdivision Bench Mark		
Street & Station	Location Description	Elevation
21st Ct N 3+24.59, 14.25' Rt.	Adjacent to Fire Hydrant near common lot corner of Lots 3 & 4, Block A, Monarch Landing 5th Addition	

Roll type curb & gutter to
 be constructed on the pavement
 on this sheet.
 Top of curb elevation are given
 for full height curb.



**BAUGHMAN
 COMPANY**
 315 Ellis St.
 Wichita, KS 67211
 316-262-7271
 BaughmanCo.com

MONARCH LANDING
 5TH ADDITION

**21ST CT
 NORTH**

Sta. 0+00 to Sta. 3+89.10
 Street Paving Improvements

PROJECT NUMBER:
 472-2021-085737

DESIGN: NBW DRAWN: CDW

DATE: Jan. 26, 2022

SHEET **7** OF **23**

File: E:\Projects\Monarch Landing 5th Addition - Engineering\STR-17-07-ET-20.dwg