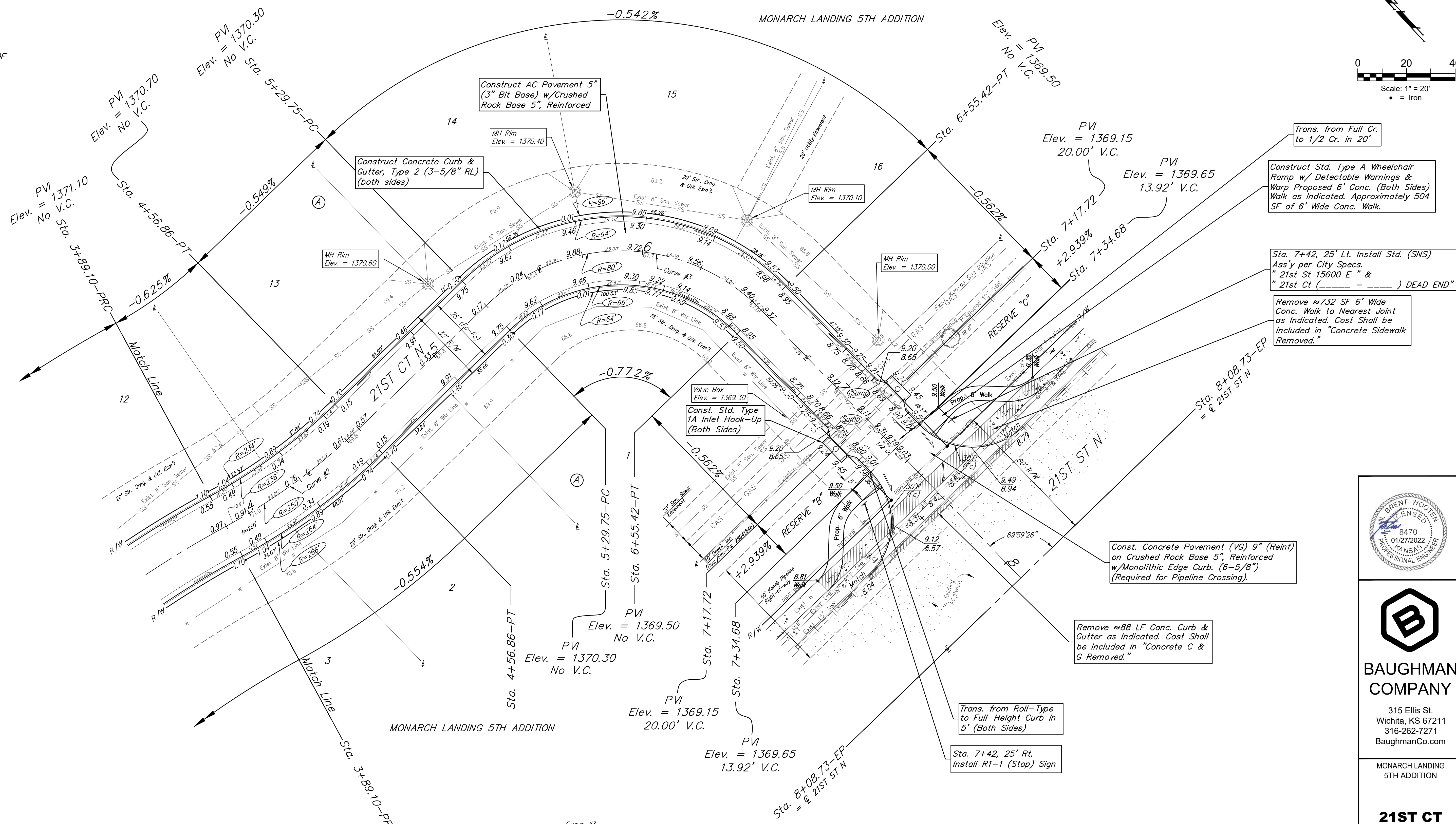
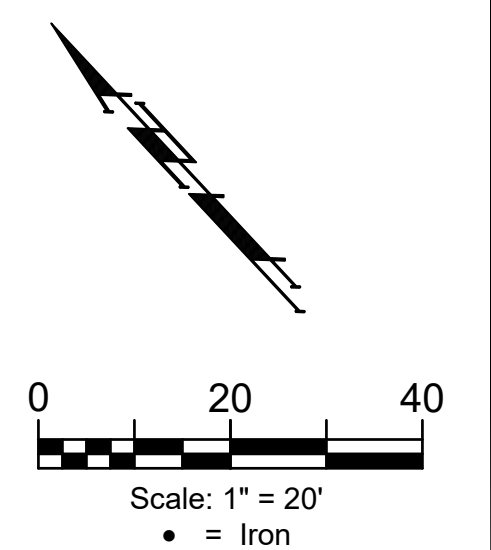


BENCHMARK:
 CITY OF WICHITA BENCHMARK
 DISC ON THE WEST END OF
 THE RCBC HEADWALL, NORTH
 OF 21ST ST 57'.
 ELEV. = 1368.37 NAVD88

BRASS DISC ON THE TOP OF
 CURB ON THE EAST SIDE OF
 CURB INLET, SOUTH SIDE OF
 FLUTTER LANE, AND NORTH OF
 LOT 10, BLOCK A, MONARCH
 LANDING 5TH ADDITION.
 ELEV. = 1370.97 NAVD88



Trans. from Full Cr. to 1/2 Cr. in 20'

Construct Std. Type A Wheelchair Ramp w/ Detectable Warnings & Warp Proposed 6' Conc. (Both Sides) Walk as Indicated. Approximately 504 SF of 6' Wide Conc. Walk.

Sta. 7+42, 25' Lt. Install Std. (SNS) Assy per City Specs. "21st St 15600 E" & "21st Ct () DEAD END"

Remove ~732 SF 6' Wide Conc. Walk to Nearest Joint as Indicated. Cost Shall be Included in "Concrete Sidewalk Removed."

Const. Concrete Pavement (VG) 9" (Reinf) on Crushed Rock Base 5", Reinforced w/Monolithic Edge Curb. (6-5/8") (Required for Pipeline Crossing).

Remove ~88 LF Conc. Curb & Gutter as Indicated. Cost Shall be Included in "Concrete C & G Removed."

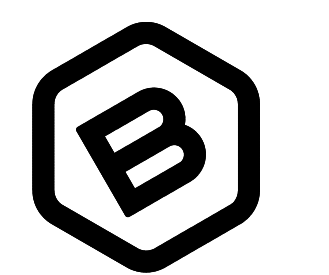
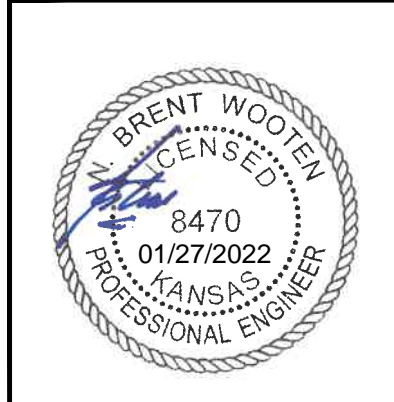
Trans. from Roll-Type to Full-Height Curb in 5' (Both Sides)

Sta. 7+42, 25' Rt. Install R1-1 (Stop) Sign

Contractor to verify depth and location of NuStar Pipeline prior to construction. Contact J.B. Smith (316-321-3500) a minimum of two weeks prior to construction.

Remove, Do Not Replace, Existing Wire Fence Only as Necessary for Construction. Cost to be Included in Bid Item "Site Clearing"

Roll type curb & gutter to be constructed on the pavement on this sheet. Top of curb elevation are given for full height curb.



BAUGHMAN COMPANY
 315 Ellis St.
 Wichita, KS 67211
 316-262-7271
 BaughmanCo.com

MONARCH LANDING 5TH ADDITION

21ST CT NORTH

Sta. 3+89.10 to Sta. 8+08.73
 Street Paving Improvements

PROJECT NUMBER:
 472-2021-085737

DESIGN: NBW DRAWN: CDW

DATE: Jan. 26, 2022

SHEET OF
8 23

Curve #2
 Curve Data Based on Centerline
 Rad. = 250' Delta = 153'39" Tangent = 34.08'
 Arc = 67.76' L.C. = 67.54' Def./Ft. = 6.87463 Min.

Station	Arc	Face Chord Lengths		Defl.	Total Defl.
		8' Left	8' Right		
3+89.10	-	-	-	0'00"00"	0'00"00"
4+00.00	10.90'	9.94'	11.86'	1'14"56"	1'14"56"
4+25.00	25.00'	22.79'	27.19'	2'51"52"	4'06"48"
4+50.00	25.00'	22.79'	27.19'	2'51"52"	6'58"40"
4+56.86	6.86'	6.26'	7.46'	0'47"09"	7'45"49"

Curve #3
 Curve Data Based on Centerline
 Rad. = 80' Delta = 90'00"00" Tangent = 80.00'
 Arc = 125.67' L.C. = 113.14' Def./Ft. = 21.48484 Min.

Station	Arc	Face Chord Lengths		Defl.	Total Defl.
		8' Left	8' Right		
5+29.75	-	-	-	0'00"00"	0'00"00"
5+50.00	20.25'	25.75'	14.64'	7'15"04"	7'15"04"
5+75.00	25.00'	31.74'	18.05'	8'57"07"	16'12"11"
6+00.00	25.00'	31.74'	18.05'	8'57"08"	25'09"19"
6+25.00	25.00'	31.74'	18.05'	8'57"07"	34'06"26"
6+50.00	25.00'	31.74'	18.05'	8'57"07"	43'03"33"
6+55.42	5.42'	6.91'	3.93'	1'56"27"	45'00"00"

File: E:\Projects\Monarch Landing 5th Addition - Engineering\STR-17-07-ET-230.dwg