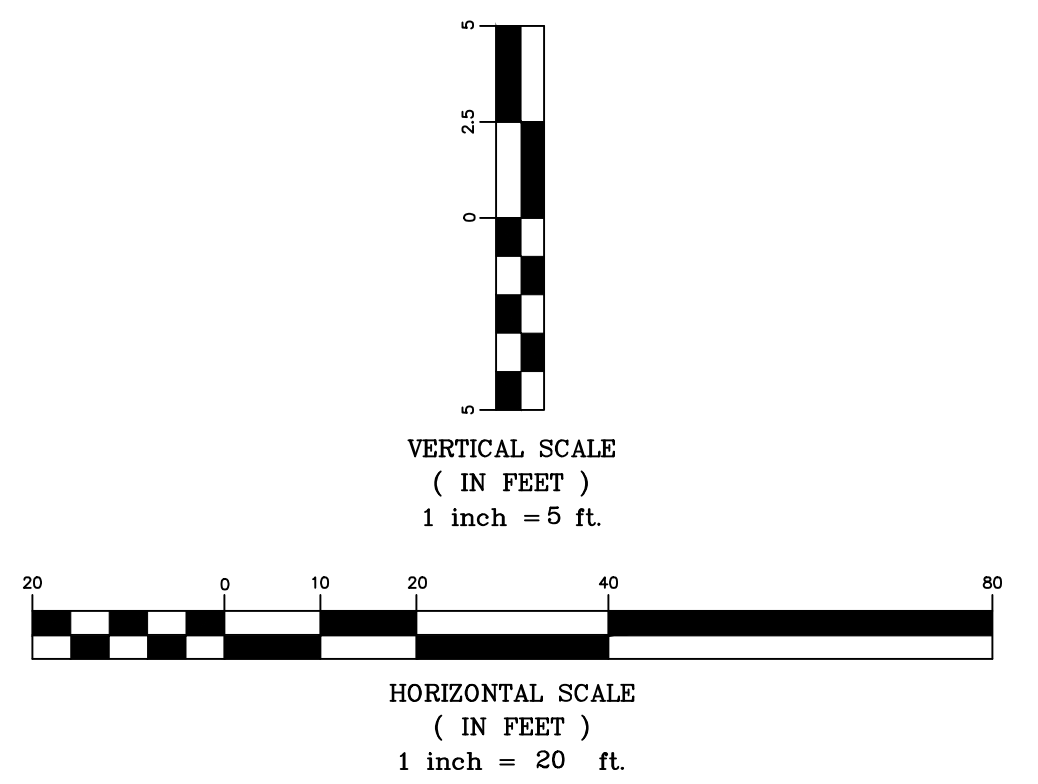
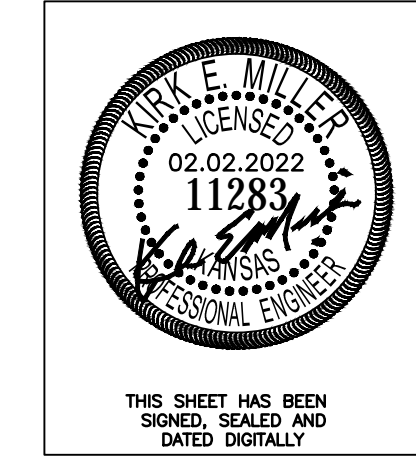
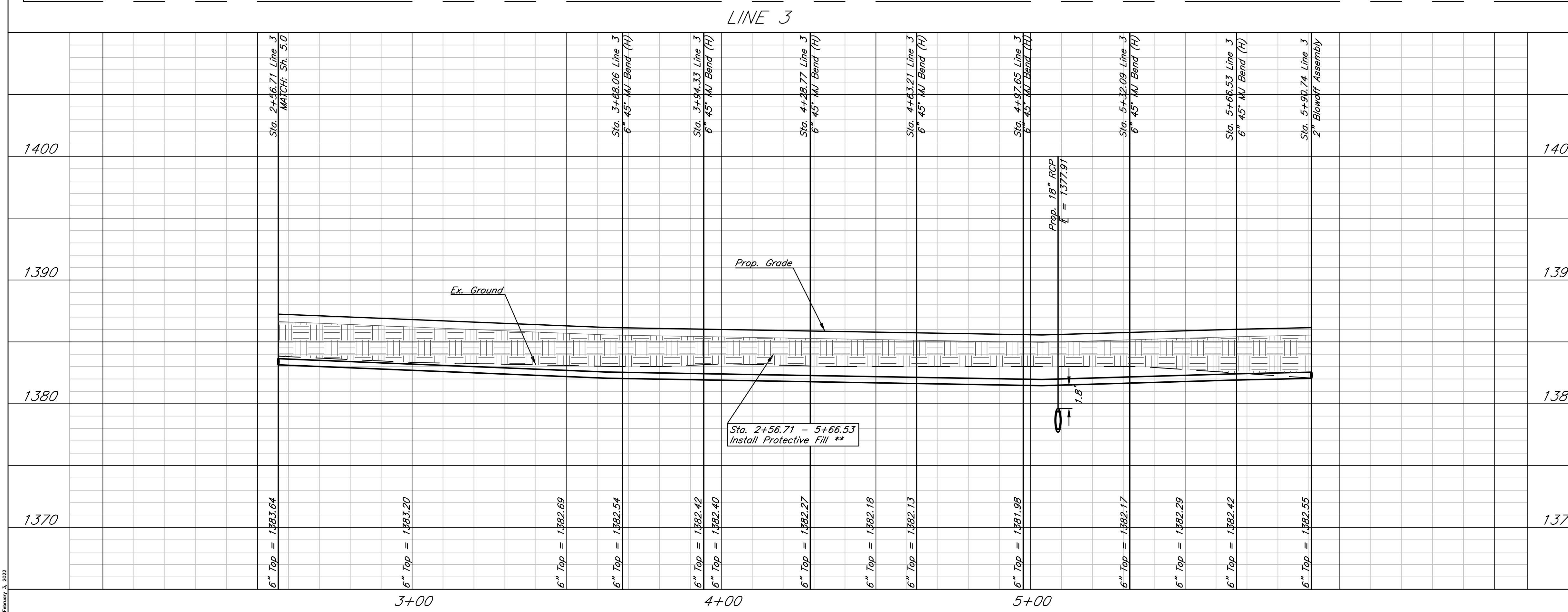


\*\* Protective Fill to be Installed where Cover over Prop. Pipe is Less than 3'. Cost is Incidental to Pipe Installation.



Sawmill Creek Addition (Phase 2)  
**WL Plan & Profile - Line 3**  
 Wichita, Kansas

	PROJECT NUMBER			
	KEM NO. 18046	FILE	DATE 01/2022	SHEET 5.1
DESIGN KM	DRAWN ZS	REVISED		

02/02/2022