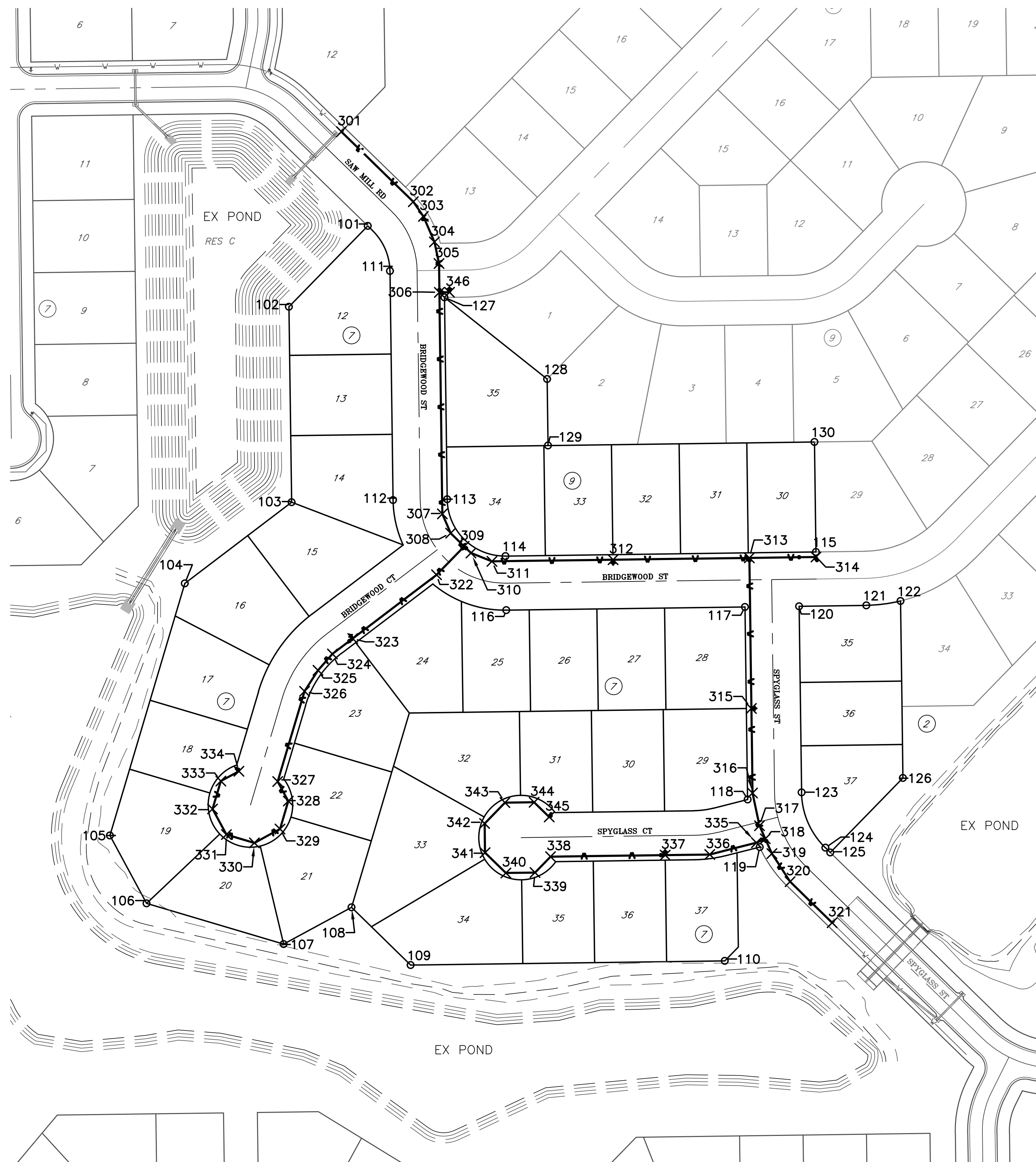


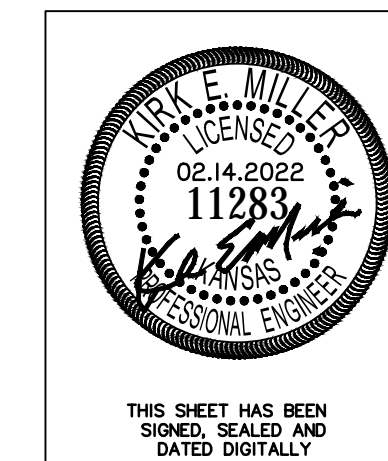
Control Points		
Point #	Northing	Easting
101	1717548.31	1676278.76
109	1716674.34	1676329.37
102	1717452.63	1676185.61
103	1717221.58	1676188.70
104	1717125.65	1676062.47
105	1716827.56	1675973.89
106	1716747.36	1676017.34
107	1716699.22	1676179.33
108	1716742.68	1676259.54
110	1716679.31	1676700.74
111	1717494.92	1676305.04
112	1717224.15	1676308.67
113	1717225.01	1676372.66
114	1717157.92	1676441.57
115	1717162.84	1676808.54

Control Points		
Point #	Northing	Easting
116	1717093.93	1676442.43
117	1717097.71	1676724.59
118	1716870.07	1676727.82
119	1716813.84	1676742.04
120	1717098.57	1676788.59
121	1717099.63	1676868.07
122	1717104.74	1676908.52
123	1716878.52	1676791.53
124	1716813.13	1676819.65
125	1716807.44	1676825.49
126	1716895.60	1676911.32
127	1717463.79	1676369.47
128	1717367.25	1676490.77
129	1717288.60	1676491.82
130	1717292.83	1676806.80

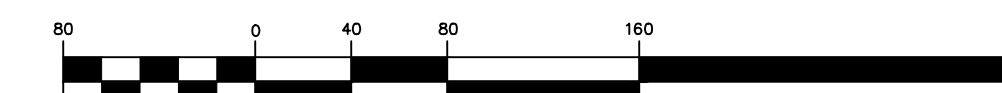


WL Control Points			
Point #	Northing	Easting	Description
301	1717659.63	1676247.56	0+00.00 WL1
302	1717576.84	1676332.60	1+18.68 WL1
303	1717559.54	1676344.49	1+39.68 WL1
304	1717529.24	1676357.52	1+72.66 WL1
305	1717503.78	1676362.93	1+98.69 WL1
306	1717469.70	1676363.39	2+32.77 WL1
307	1717207.79	1676366.90	4+94.71 WL1
308	1717184.95	1676376.71	5+19.57 WL1
309	1717169.35	1676392.73	5+41.93 WL1
310	1717161.57	1676400.71	5+53.07 WL1
311	1717151.71	1676425.46	5+79.71 WL1
312	1717153.63	1676568.64	7+22.90 WL1
313	1717155.78	1676729.81	8+84.09 WL1
314	1717156.84	1676808.62	9+62.90 WL1
315	1716977.80	1676732.20	1+78.00 WL2
316	1716877.74	1676733.54	2+78.07 WL2
317	1716839.07	1676741.73	3+17.60 WL2
318	1716823.72	1676748.59	3+34.41 WL2
319	1716806.20	1676756.42	3+53.60 WL2
320	1716773.03	1676777.91	3+93.13 WL2
321	1716724.39	1676827.63	4+62.68 WL2
322	1717135.77	1676360.03	0+46.87 WL3
323	1717060.43	1676260.89	1+71.39 WL3

WL Control Points			
Point #	Northing	Easting	Description
324	1717042.23	1676236.95	2+01.46 WL3
325	1717022.88	1676219.93	2+27.23 WL3
326	1716998.09	1676203.98	2+56.71 WL3
327	1716891.35	1676172.26	3+68.06 WL3
328	1716868.26	1676184.78	3+94.33 WL3
329	1716835.24	1676174.97	4+28.77 WL3
330	1716818.83	1676144.68	4+63.21 WL3
331	1716828.64	1676111.67	4+97.65 WL3
332	1716858.93	1676095.26	5+32.09 WL3
333	1716891.94	1676105.07	5+66.53 WL3
334	1716903.48	1676126.36	5+90.74 WL3
335	1716819.03	1676738.09	0+11.50 WL4
336	1716905.09	1676682.91	0+68.41 WL4
337	1716804.38	1676630.26	1+21.07 WL4
338	1716802.57	1676494.76	2+56.58 WL4
339	1716783.74	1676476.43	2+82.85 WL4
340	1716783.28	1676442.00	3+17.29 WL4
341	1716807.31	1676417.32	3+51.73 WL4
342	1716841.75	1676416.86	3+86.17 WL4
343	1716866.42	1676440.88	4+20.61 WL4
344	1716866.89	1676475.32	4+55.05 WL4
345	1716849.46	1676493.22	4+80.03 WL4
346	1717469.86	1676375.38	0+12.00 WL5



THIS SHEET HAS BEEN SIGNED, SEALED AND DATED DIGITALLY



HORIZONTAL SCALE  
( IN FEET )  
1 inch = 80 ft.

Sawmill Creek Addition (Phase 2)  
**Control Map**  
Wichita, Kansas

 KEMILLER ENGINEERING P.A. 117 E. Lewis, Wichita, KS 67202 (316)264-0242	PROJECT NUMBER			SHEET <b>2.0</b>
	KEM NO. 18046	FILE	DATE 02/2022	
DESIGN KM	DRAWN ZS	REVISED		