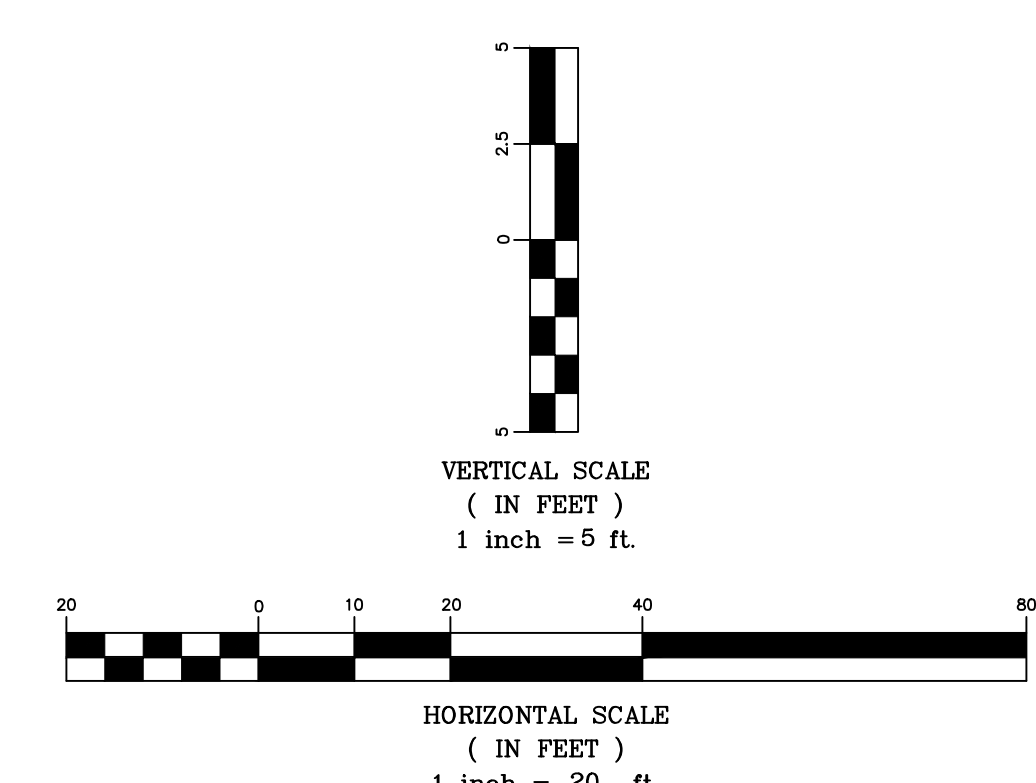
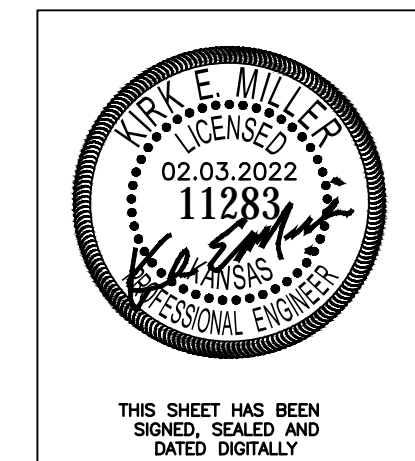
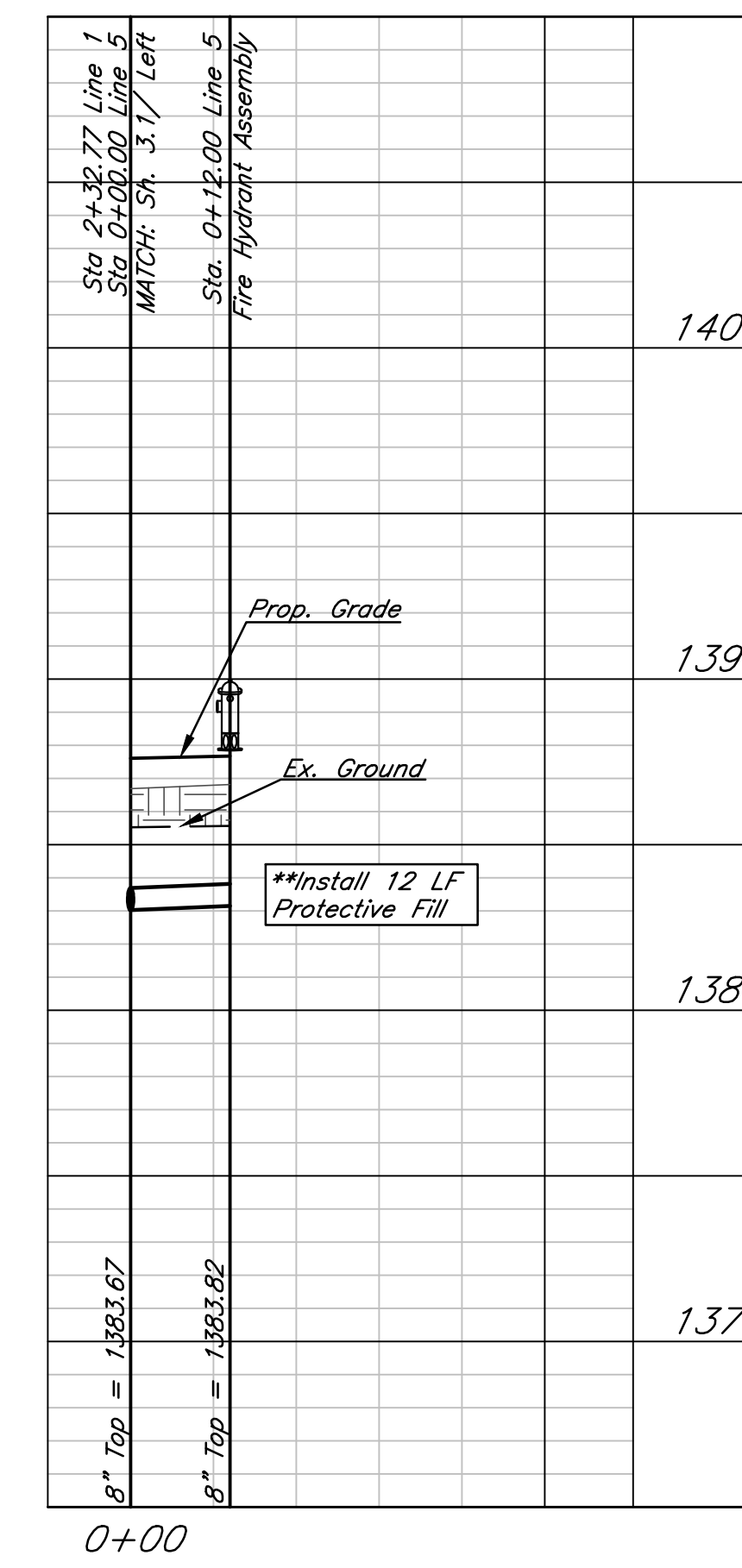
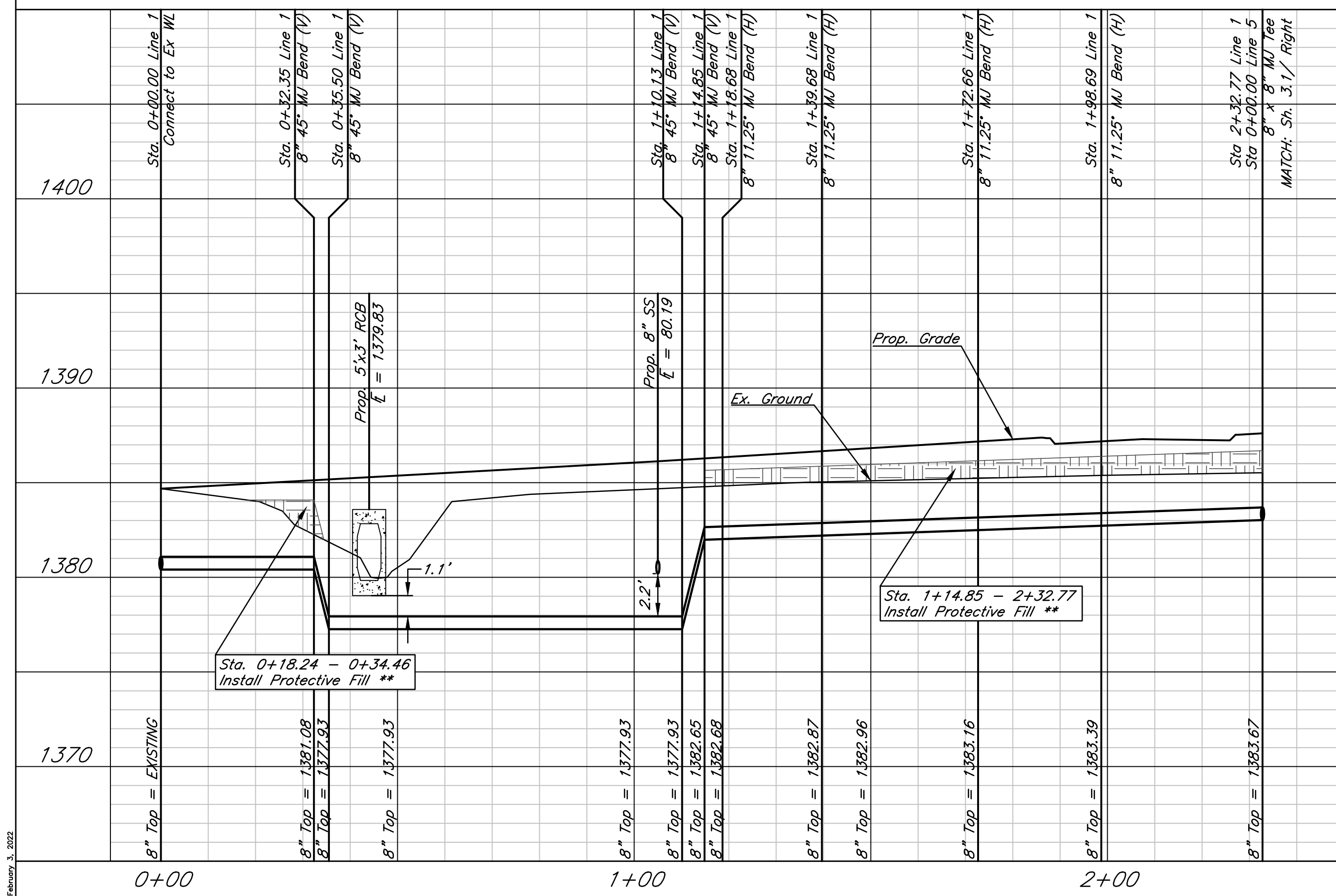


\*\* Protective Fill to be Installed where Cover over Prop. Pipe is Less than 3'. Cost is Incidental to Pipe Installation.

LINE 1

LINE 5



Sawmill Creek Addition (Phase 2)  
WL Plan & Profile - Lines 1 & 5  
Wichita, Kansas

	PROJECT NUMBER			
	KEM NO. 18046	FILE	DATE 01/2022	SHEET 3.0
DESIGN KM	DRAWN ZS	REVISED		

06/09/23, 2022