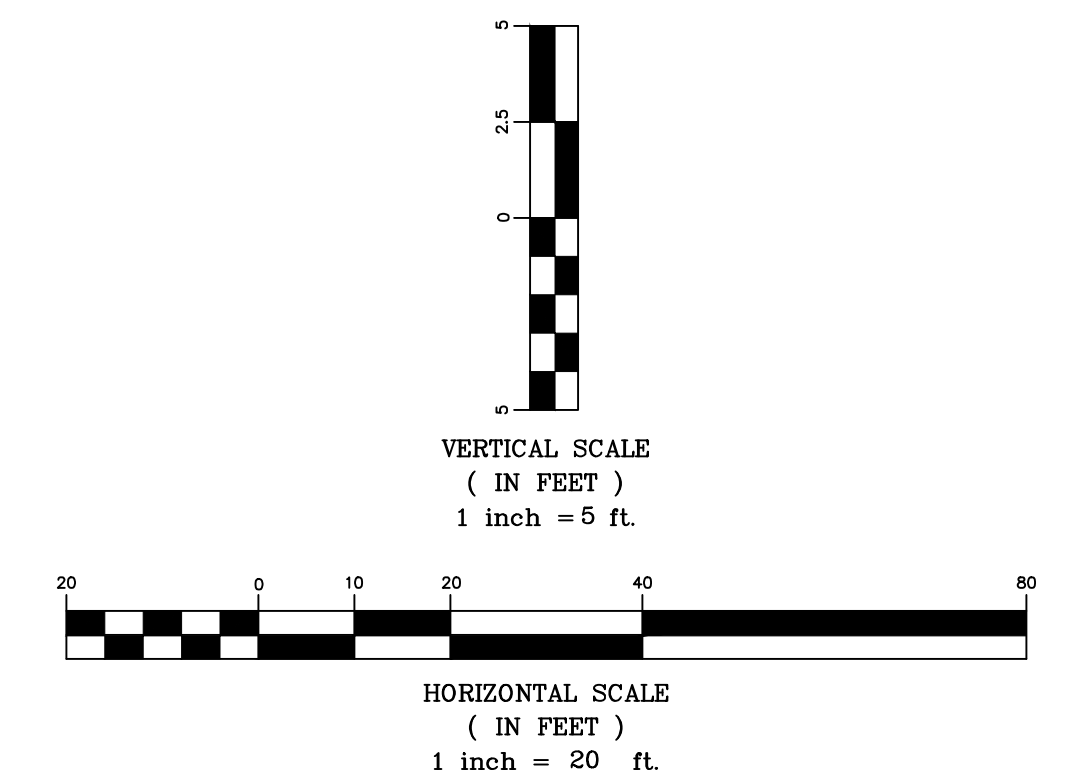
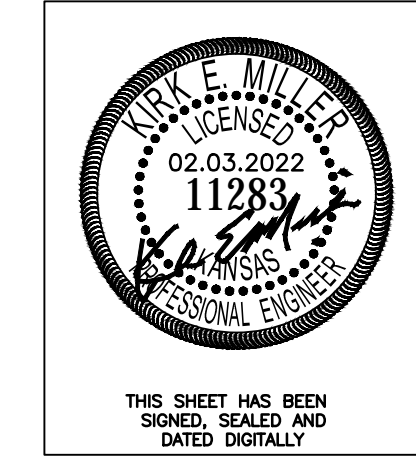
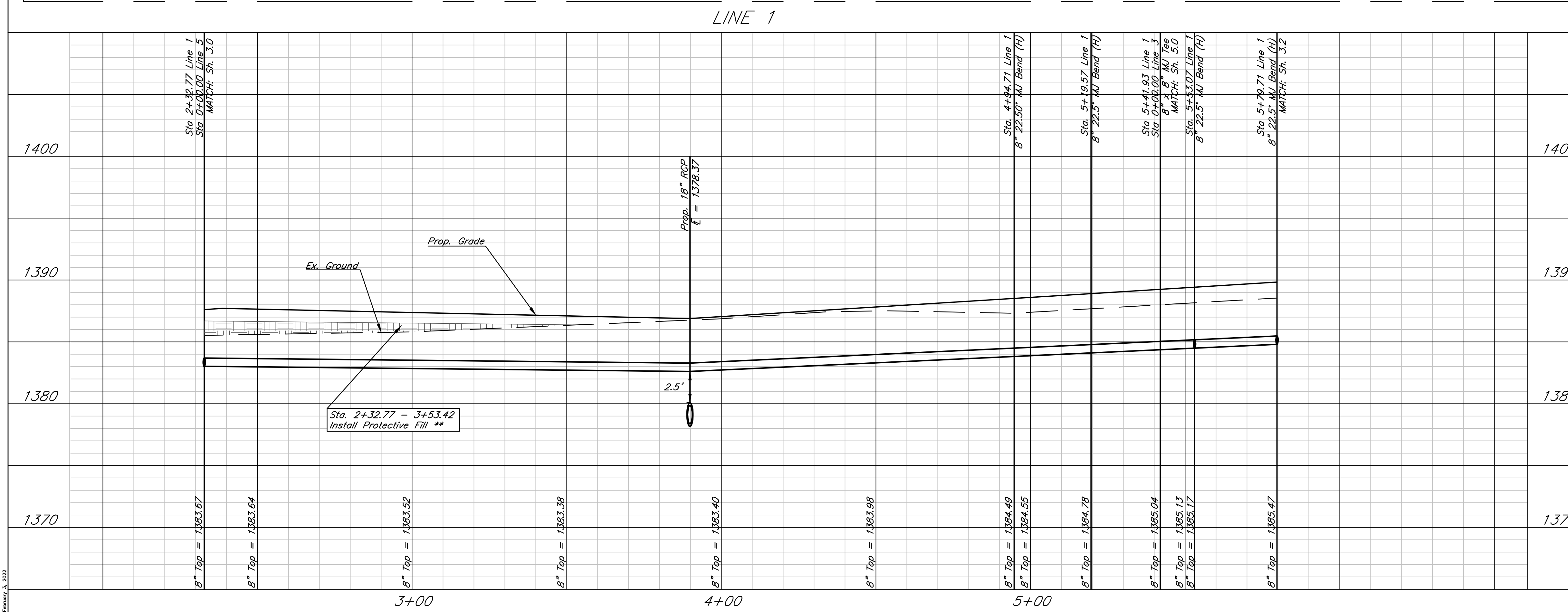


** Protective Fill to be Installed where Cover over Prop. Pipe is Less than 3'. Cost is Incidental to Pipe Installation.



Sawmill Creek Addition (Phase 2)
WL Plan & Profile - Line 1
 Wichita, Kansas

 117 E. Lewis, Wichita, KS 67202 (316)264-0242	PROJECT NUMBER			3.1
	KEM NO. 18046	FILE DESIGN KM	DATE 01/2022 DRAWN ZS REVISED	

02/02/2022