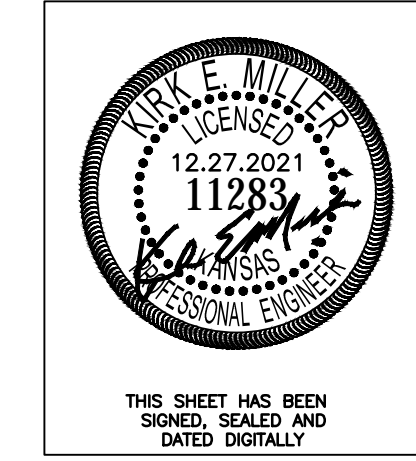
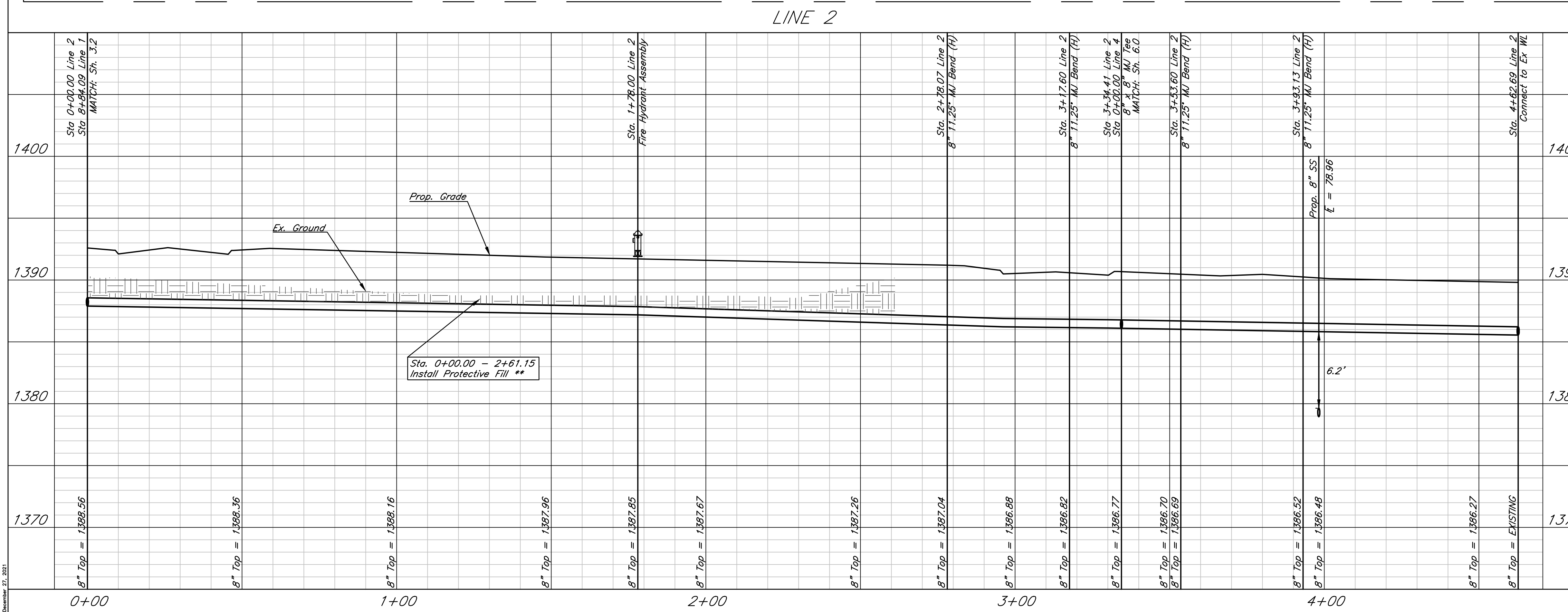
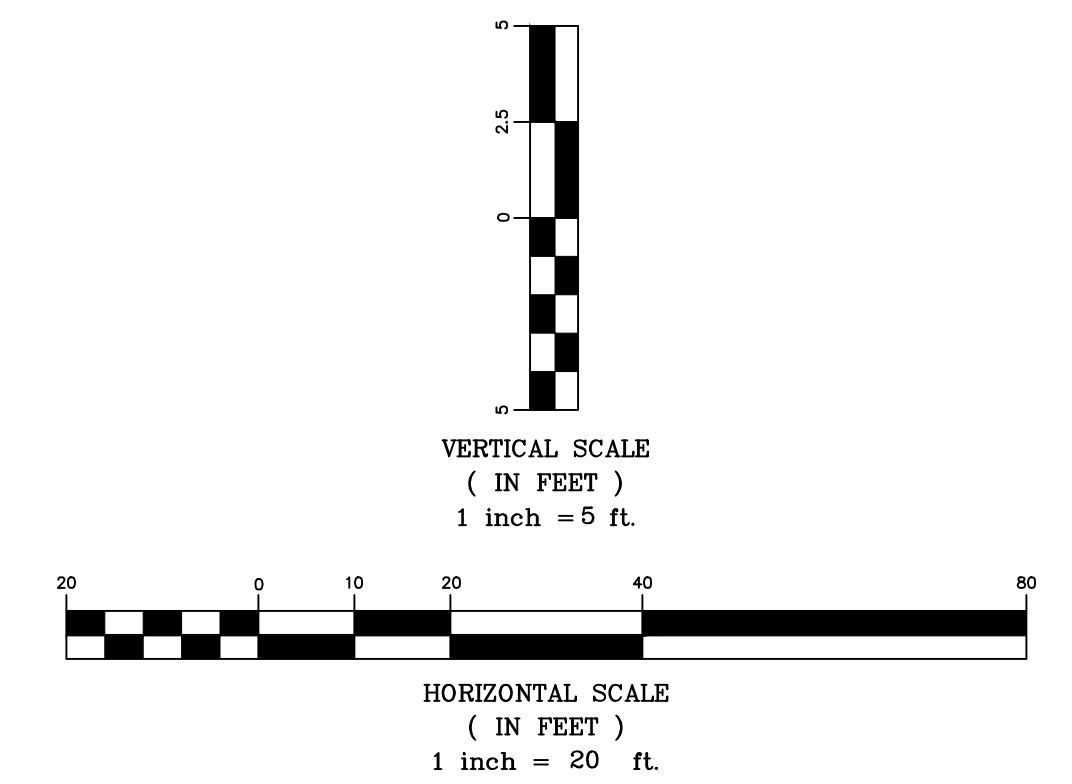


** Protective Fill to be Installed where Cover over Prop. Pipe is Less than 3'. Cost is Incidental to Pipe Installation.



THIS SHEET HAS BEEN SIGNED, SEALED AND DATED DIGITALLY



Sawmill Creek Addition (Phase 2)
WL Plan & Profile - Line 2
 Wichita, Kansas

 117 E. Lewis, Wichita, KS 67202 (316)264-0242	PROJECT NUMBER			SHEET 4.0
	KEM NO. 18046	FILE	DATE 01/2022	
DESIGN KM	DRAWN ZS	REVISED		

December 31, 2021