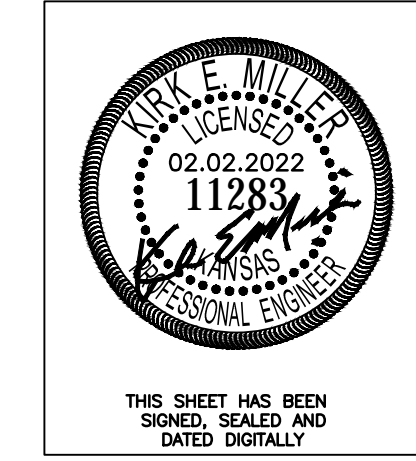
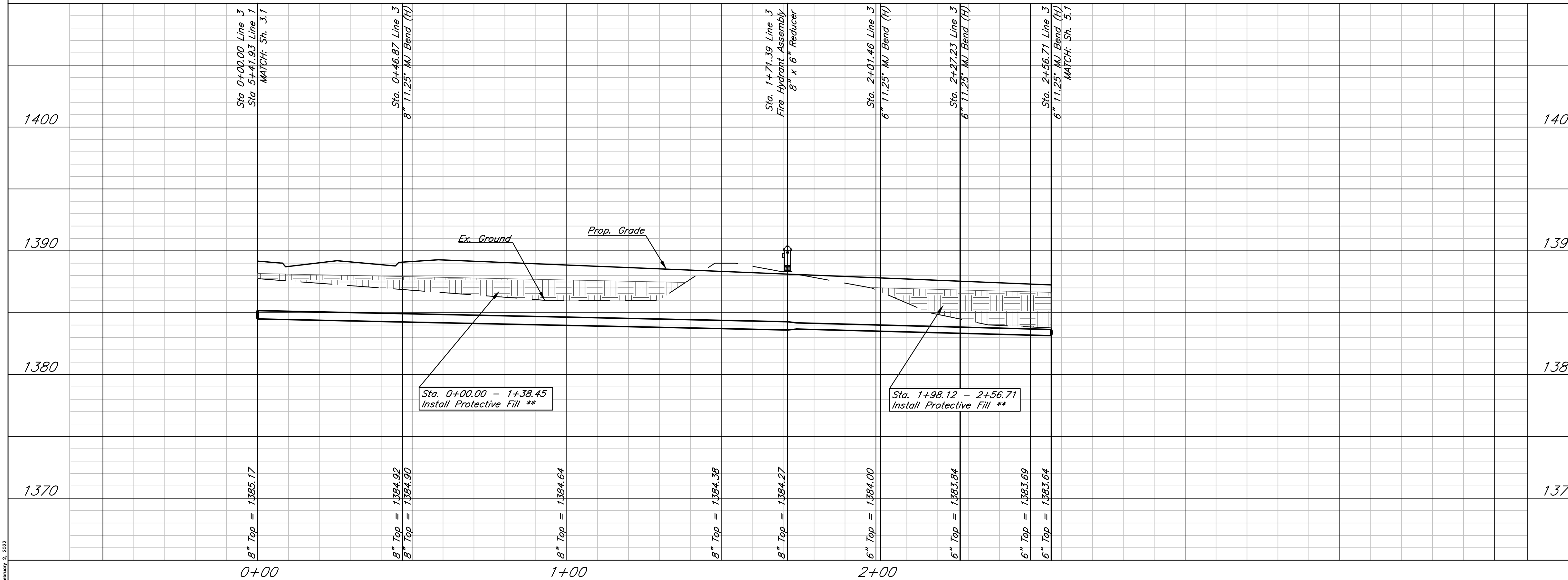
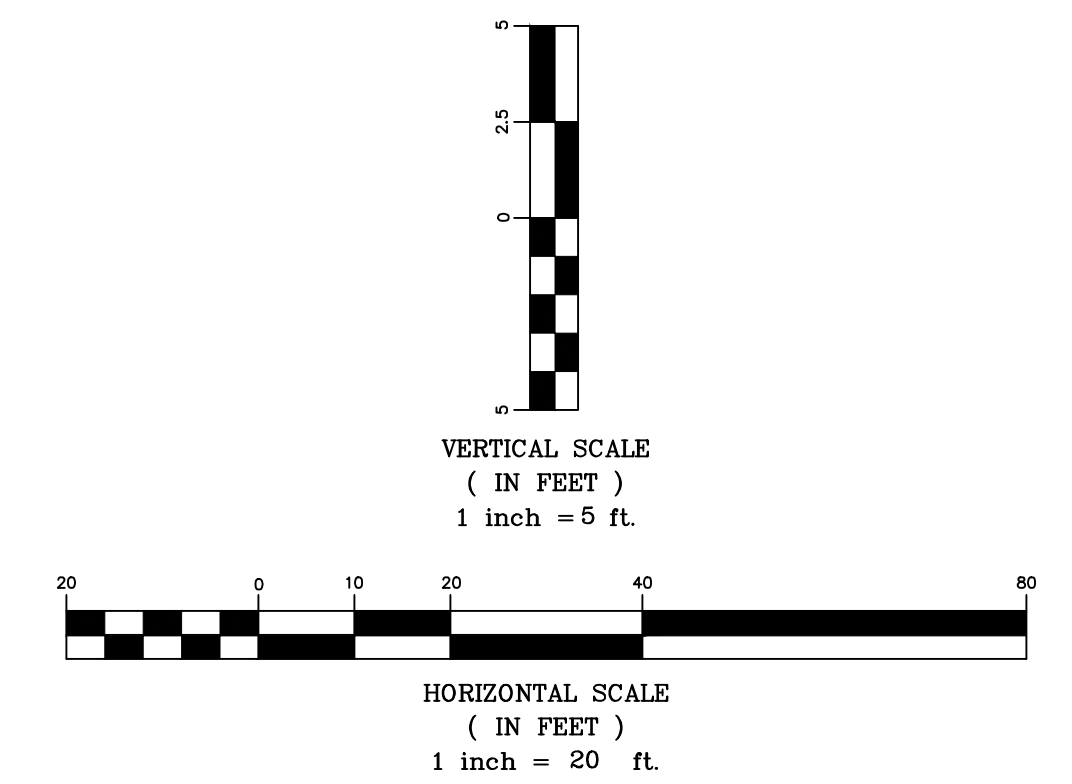


\*\* Protective Fill to be Installed where Cover over Prop. Pipe is Less than 3'. Cost is Incidental to Pipe Installation.

LINE 3



THIS SHEET HAS BEEN SIGNED, SEALED AND DATED DIGITALLY



Sawmill Creek Addition (Phase 2)  
**WL Plan & Profile - Line 3**  
 Wichita, Kansas

 117 E. Lewis, Wichita, KS 67202 (316)264-0242	PROJECT NUMBER			SHEET <b>5.0</b>
	KEM NO. 18046	FILE	DATE 01/2022	
DESIGN KM	DRAWN ZS	REVISED		

February 2, 2022