

## GENERAL NOTES:

- The Contractor shall comply with all applicable safety regulations. All construction shall be completed following current City Standard Specifications and Special Provisions.
- Contractor will be required to provide notice to utility companies a minimum of seventy-two (72) hours prior to any excavation, as follows:  

Kansas One-Call	687-2470
-----------------	----------

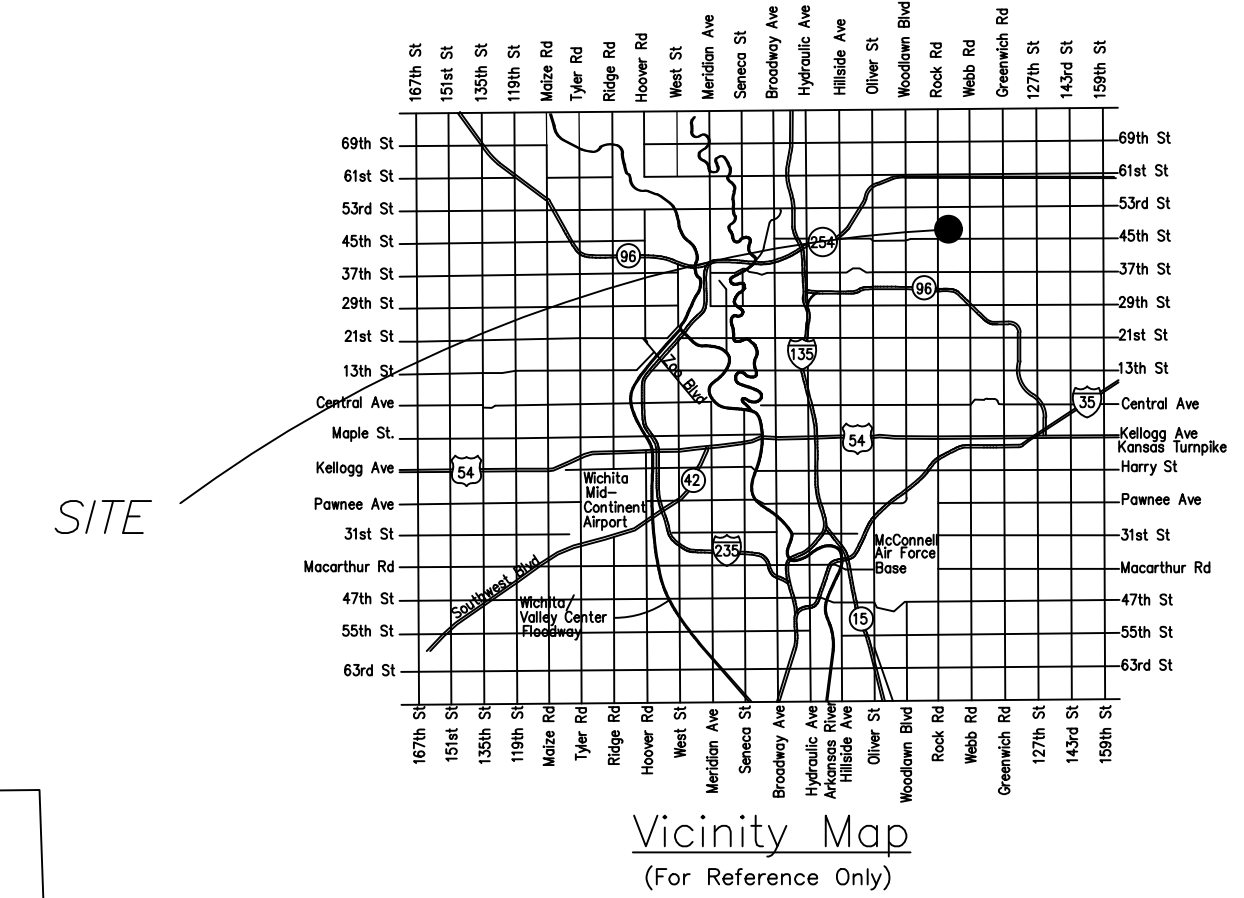
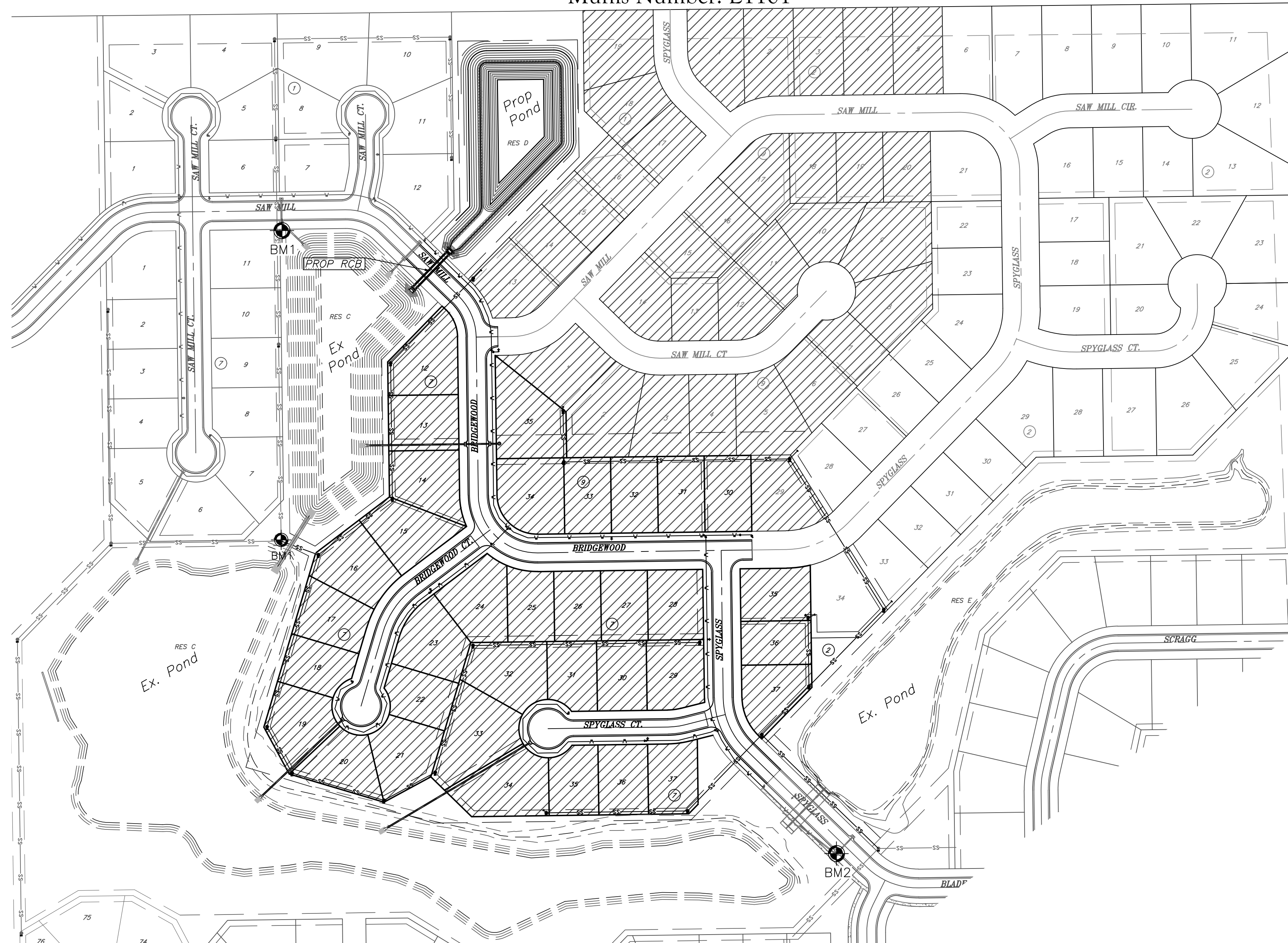
The Contractor must notify the following in case of an emergency:

AT&T	1-800-246-8464
Black Hills Energy	1-800-694-8989
City of Wichita Water & Sewer	1-316-219-8921
City of Wichita Stormwater	1-316-268-4090
City of Wichita Traffic	1-316-268-4034
Cox Communications	1-888-249-3530
Kansas Gas Service	1-888-482-4950
Everg	1-800-544-4857
- Utility service lines, poles, etc. are to be adjusted as necessary by others prior to construction unless the plans specifically call for their adjustment by the Contractor or unless the plans specifically identify a utility to be adjusted by its owner during construction. Existing utilities and their location, as shown on the plans, represent the best information obtainable for design. The Contractor will be required to work around existing utilities within the right-of-way which do not conflict with proposed construction.
- Rubble from the removal of miscellaneous structures and excess excavation which is to be wasted shall be disposed of on sites to be provided by the Contractor. These sites shall be approved by the Engineer as to suitability, appearance and site location. Locations, in the opinion of the Engineer, that will leave an unsightly appearance will not be approved. All disposal sites must be approved by the Kansas Department of Health and Environment. Material either stockpiled or disposed of in a flood plain will require a Kansas State Board of Agriculture permit. Any material dumped in waters of the United States or wetlands is subject to U.S. Corps. of Engineers permitting regulations. Any material buried or stockpiled beyond approved construction limits will require additional archaeological investigations unless buried in a previously approved borrow location.
- Trees and shrubs in public right-of-way which are in direct conflict with proposed new construction shall be removed by the Contractor with the City Engineer's approval. Trees and shrubs which are not in direct conflict with proposed new construction shall be saved and protected from damage.
- The Contractor shall give all property owners and/or tenants of developed property abutting the construction of this project a minimum of ten (10) days notice prior to start of construction.
- The Contractor shall be responsible for preserving property irons. The Contractor will be required to re-establish any property irons which are damaged or destroyed by his construction operations. Such irons shall be re-established by a licensed land surveyor in accordance with state laws.
- The Engineering Division shall field locate water valves one time during construction when requested by the Contractor. It shall be the Contractor's responsibility to preserve such field locations during the construction process. Water valves, valve boxes or fire hydrants damaged during construction shall be repaired by Contractor at his own expense. Valve boxes and water meters within the project limits shall be adjusted to match final grades by the contractor.
- Project Inspector shall be On-Site when Construction begins.
- If traffic will be impacted by construction, a traffic control plan must be submitted and approved by the City Traffic Engineer, Mike Armour at [traffic@wichita.gov](mailto:traffic@wichita.gov) before construction can begin. The Contractor shall be responsible for all traffic control measures to facilitate construction. All construction zone markings and signage shall conform to the latest version of the Manual on Uniform Traffic Control Devices (MUTCD) as published by the US Dept. of Transportation, Federal Highway Administration. All costs associated with construction markings and signage shall be the Contractors responsibility.

# STORM WATER DRAIN TO SERVE Sawmill Creek Addition (Phase 2)

CITY OF WICHITA, KANSAS

Gary Janzen, P.E. City Engineer  
Project Number: 458-2021-085478  
Org Code: 47309621  
Munis Number: E1101



## INDEX OF SHEETS:

- |         |                         |
|---------|-------------------------|
| 1.0     | Cover Sheet             |
| 1.1     | Existing Conditions     |
| 2.0     | RCB Plan & Profile      |
| 3.0     | Mass Grading Plan       |
| 4.0     | Pond Plan               |
| 5.0     | Erosion Control Plan    |
| 5.1-5.5 | Erosion Control Details |
| 6.0     | Plat                    |



**Stormwater Certification:**

New Development or Redevelopment (Circle One)

Stormwater Permit # S-AR94-1381

NOI Permit # SW2022-0016

These construction plans were prepared in accordance with the current Stormwater management Regulations as set forth in the City of Wichita's Stormwater Management Ordinance 16.32 and the policies/guidelines presented in the Wichita/Sedgwick County Stormwater Manual.

Site Area (Acres) = 12.39

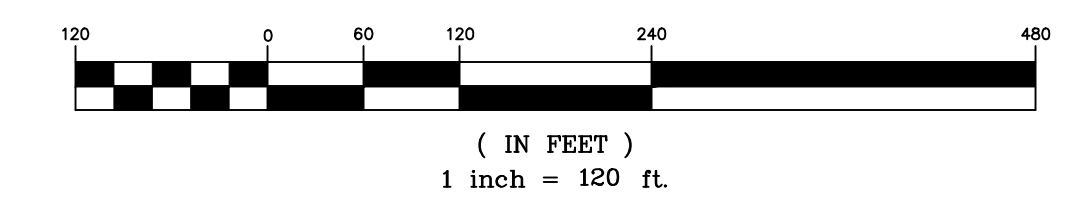
Disturbed Area (Acres) = 10.53

Water Quality Treatment: COW Off-Site BMP Program

Downstream Channel Protection: N/A

Detention: Existing Detention Pond & Proposed Detention Pond

The BMP used for this development is COW Off-Site BMP Program.



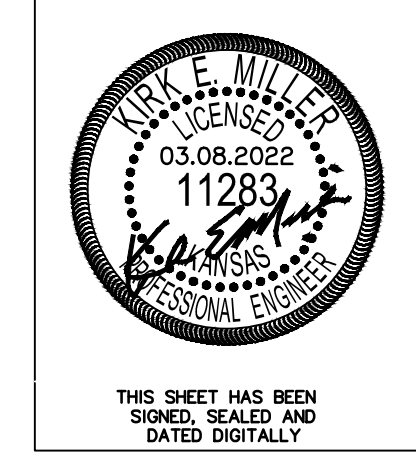
Developer: Thayer (T.J.) Geith  
Elite USA Construction, LLC  
9235 E Harry St, Bldg 100, Wichita, KS  
316-806-6060

**BENCHMARKS:**

BM 1: AT&T Disc, Approx. 3' East & 2' South of the NE Corner of Lot 11, Block 7, Sawmill Creek Addition  
Elevation = 1384.91 (NAVD 88)

BM 2: Chiseled "□" on Curb Inlet, Approx. 26' North & 202' West of the SW Corner of Lot 17, Block 7, Sawmill Creek Addition  
Elevation = 1388.25 (NAVD 88)

MARCH 2022



**KEMILLER**  
ENGINEERING PA  
117 E. Lewis, Wichita, KS 67202 (316)264-0242