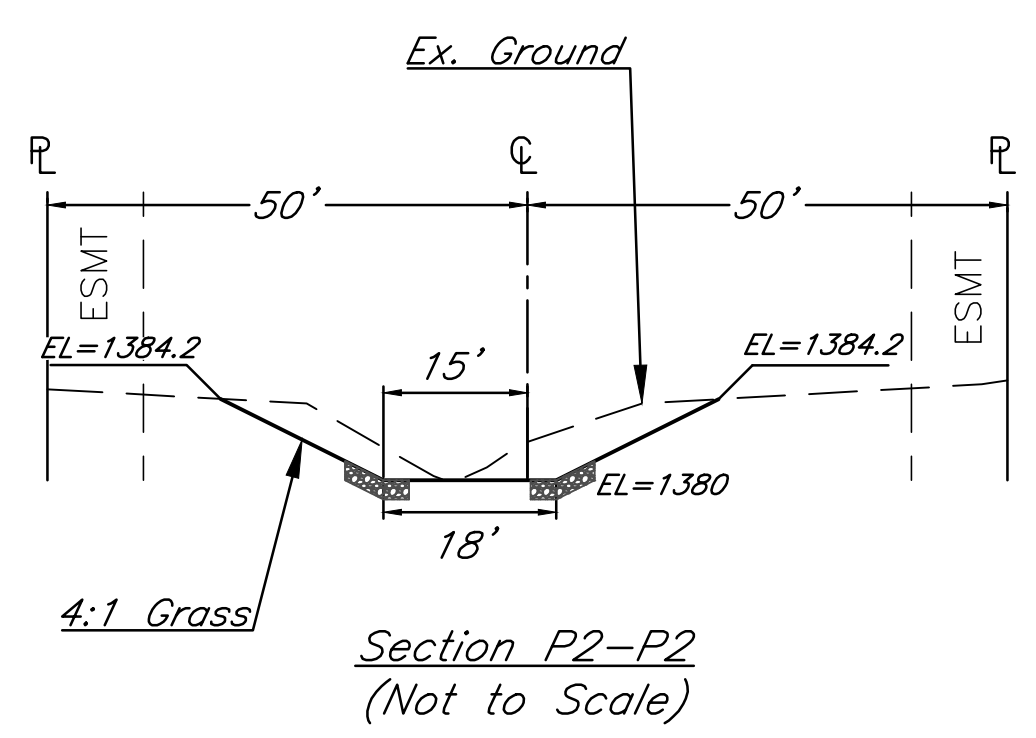
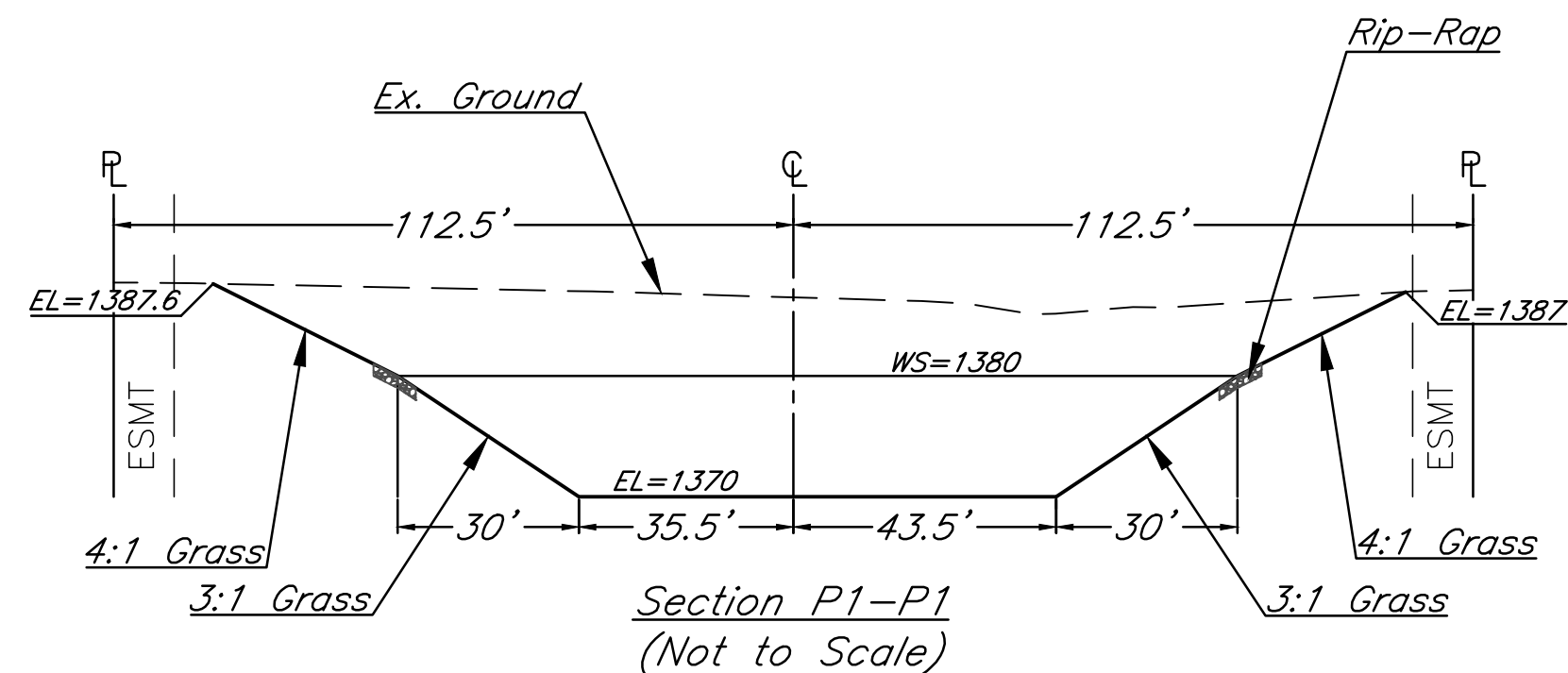
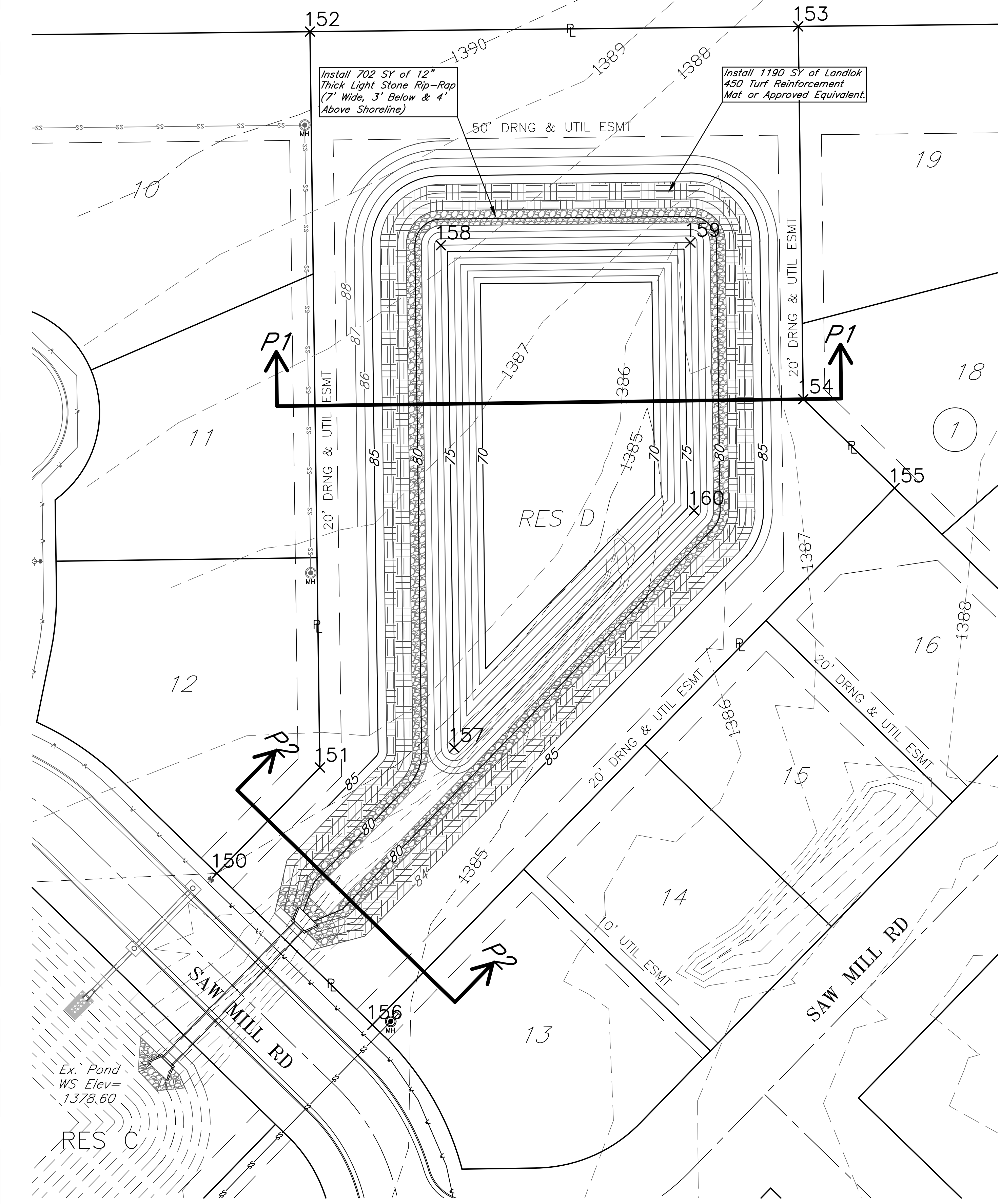
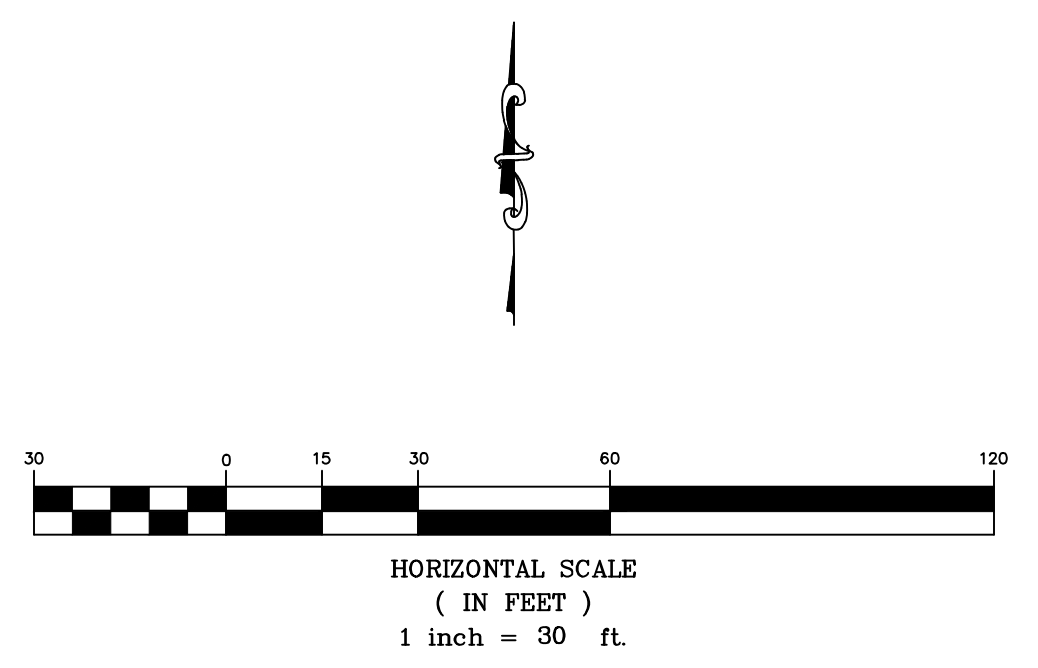
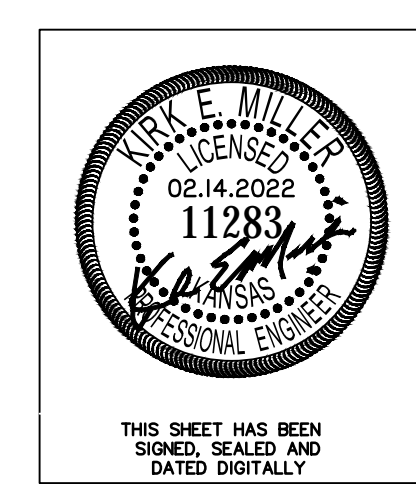


Point Table		
Point #	Northing	Easting
158	1717953.27	1676354.99
150	1717663.93	1676251.75
151	1717712.68	1676299.21
152	1718051.62	1676294.67
153	1718054.05	1676519.66
154	1717882.36	1676521.96
155	1717841.38	1676564.06
156	1717594.17	1676323.40
157	1717221.78	1676361.11
159	1717954.51	1676469.99
160	1717831.02	1676471.65



Note: The pond bottom and sides are to be scarified a minimum of 8 inches, moisture conditioned and recompacted to a minimum of 95% of standard proctor density (ASTM D-698) from -3% to +3% of optimum moisture content. Additionally, all gypsum/caliche seams, sandy clay and clay shale encountered should be over-excavated a minimum of 1 foot and replaced with clay.



Sawmill Creek Addition (Phase 2)
Pond Plan
 Wichita, Kansas

	PROJECT NUMBER			SHEET 2.0
	KEM NO. 18046	FILE	DATE 02/2022	
117 E. Lewis, Wichita, KS 67202 (316)284-0242	DESIGN KM	DRAWN ZS	REVISED	