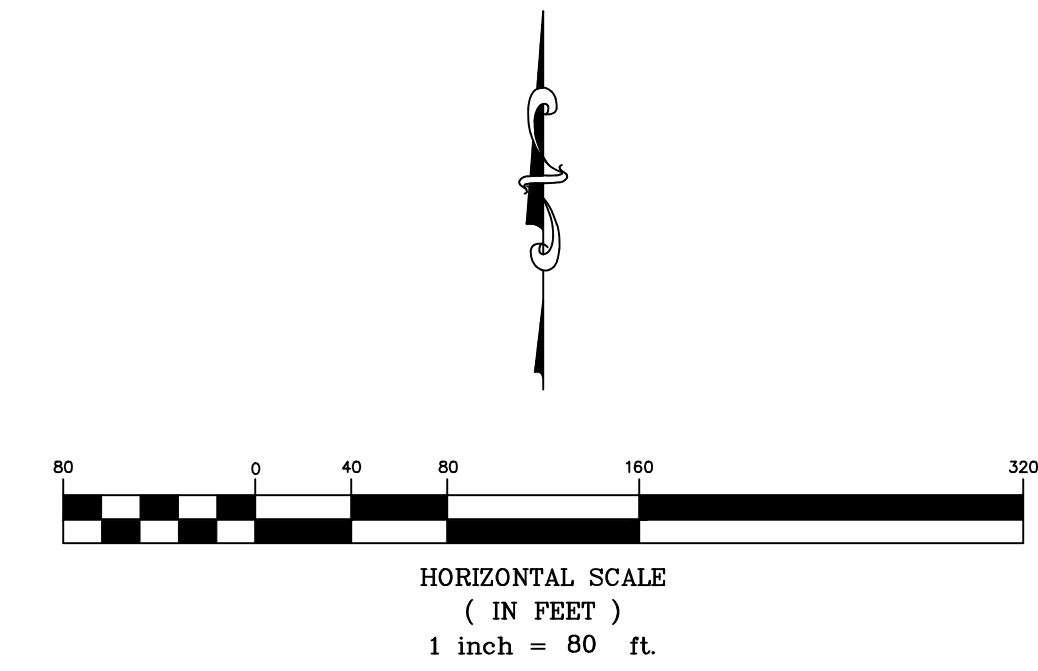
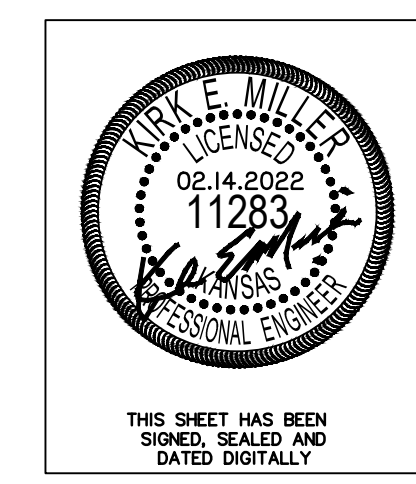
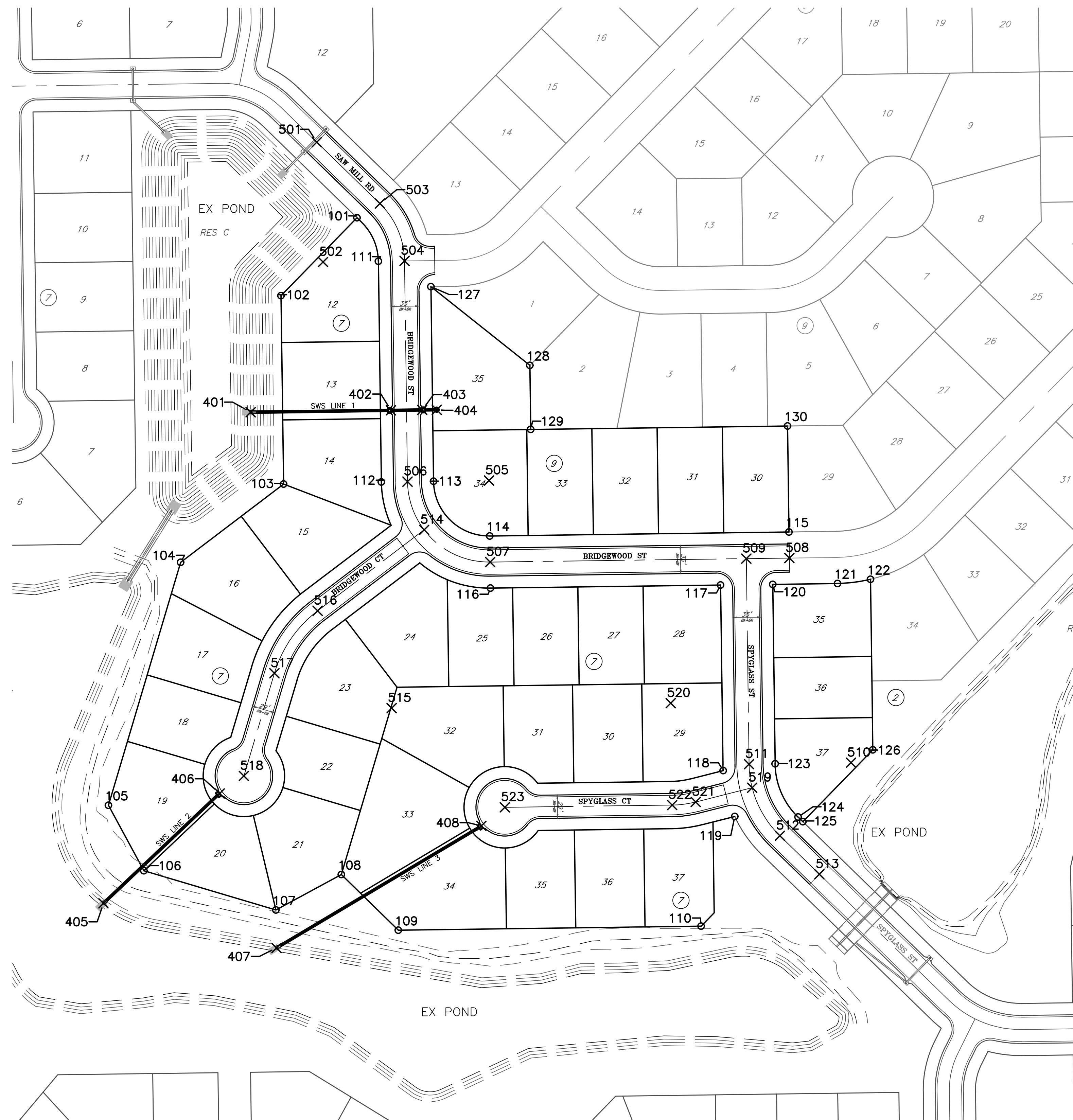


Control Points		
Point #	Northing	Easting
109	1716674.34	1676329.37
101	1717548.31	1676278.76
102	1717452.63	1676185.61
103	1717221.58	1676188.70
104	1717125.65	1676062.47
105	1716827.56	1675973.89
106	1716747.36	1676017.34
107	1716699.22	1676179.33
108	1716742.68	1676259.54
110	1716679.31	1676700.74
111	1717494.92	1676305.04
112	1717224.15	1676308.67
113	1717225.01	1676372.66
114	1717157.92	1676441.57
115	1717162.84	1676808.54

Control Points		
Point #	Northing	Easting
116	1717093.93	1676442.43
117	1717097.71	1676724.59
118	1716870.07	1676727.82
119	1716813.84	1676742.04
120	1717098.57	1676788.59
121	1717099.63	1676868.07
122	1717104.74	1676908.52
123	1716878.52	1676791.53
124	1716813.13	1676819.65
125	1716807.44	1676825.49
126	1716895.60	1676911.32
127	1717463.79	1676369.47
128	1717367.25	1676490.77
129	1717288.60	1676491.82
130	1717292.83	1676806.80

SWS Control Points			
Point #	Northing	Easting	Description
401	1717309.72	1676148.26	0+00 SWS1
402	1717312.02	1676320.32	1+70.58 SWS1
403	1717312.54	1676358.66	2+11.92 SWS1
404	1717312.77	1676376.49	2+28.25 SWS1
405	1716707.32	1675967.81	0+00 SWS2
406	1716842.07	1676110.34	1+94.65 SWS2
407	1716652.63	1676180.05	0+00 SWS3
408	1716802.38	1676431.20	2+90.91 SWS3

Paving Control Points			
Point #	Northing	Easting	Description
501	1717641.00	1676229.42	00+00.00-MATCH
502	1717494.01	1676237.05	01+08.00-100' RAD
503	1717565.67	1676306.81	01+08.00-PC
504	1717495.35	1676337.04	01+86.54-PT
505	1717225.92	1676440.66	04+57.34-100' RAD
506	1717224.58	1676340.67	04+57.34-PC
507	1717125.93	1676442.00	06+14.42-PT
508	1717130.84	1676808.97	09+81.42-END
509	1717130.13	1676756.16	20+00.00
510	1716879.76	1676884.53	22+52.07-125' RAD
511	1716878.09	1676759.54	22+52.073-PC
512	1716790.20	1676797.33	23+50.24-PT
513	1716743.03	1676845.78	24+17.86-MATCH EX
514	1717165.42	1676361.04	30+00.00
515	1716946.76	1676321.22	31+64.00-150' RAD
516	1717066.19	1676230.46	31+64.00-PC
517	1716989.49	1676177.43	32+58.82-PT
518	1716863.59	1676140.02	33+90.16-CENTER
519	1716849.14	1676763.34	40+00.00
520	1716952.84	1676663.52	40+71.36-125' RAD
521	1716831.65	1676694.15	40+71.36-PC
522	1716827.85	1676665.20	41+00.63-PT
523	1716825.10	1676459.96	43+05.88-CENTER



Sawmill Creek Addition (Phase 2)
Control Map
 Wichita, Kansas

 KEMILLER ENGINEERING P.A. 117 E. Lewis, Wichita, KS 67202 (316)264-0242	PROJECT NUMBER			SHEET 2.0
	KEM NO. 18046	FILE	DATE 02/2022	
DESIGN KM	DRAWN ZS	REVISED		