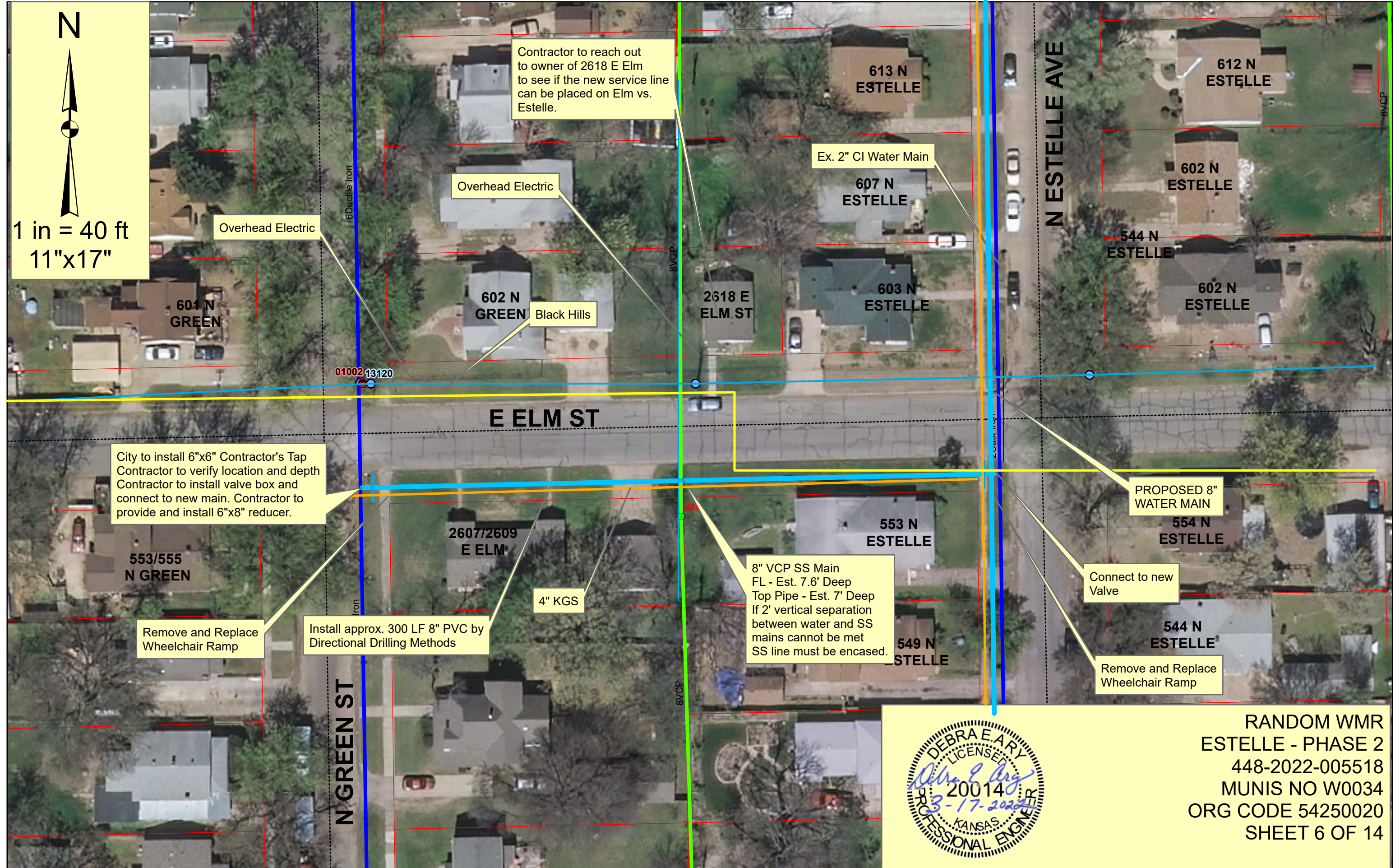


N



1 in = 40 ft
11"x17"



Contractor to reach out to owner of 2618 E Elm to see if the new service line can be placed on Elm vs. Estelle.

Overhead Electric

Overhead Electric

Ex. 2" CI Water Main

Black Hills

City to install 6"x6" Contractor's Tap
Contractor to verify location and depth
Contractor to install valve box and connect to new main. Contractor to provide and install 6"x8" reducer.

PROPOSED 8" WATER MAIN

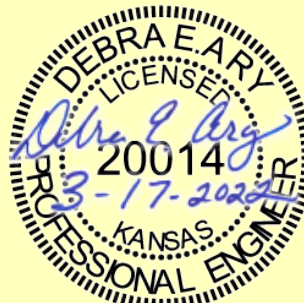
Remove and Replace Wheelchair Ramp

Install approx. 300 LF 8" PVC by Directional Drilling Methods

8" VCP SS Main
FL - Est. 7.6' Deep
Top Pipe - Est. 7' Deep
If 2' vertical separation between water and SS mains cannot be met SS line must be encased.

Connect to new Valve

Remove and Replace Wheelchair Ramp



RANDOM WMR
ESTELLE - PHASE 2
448-2022-005518
MUNIS NO W0034
ORG CODE 54250020
SHEET 6 OF 14