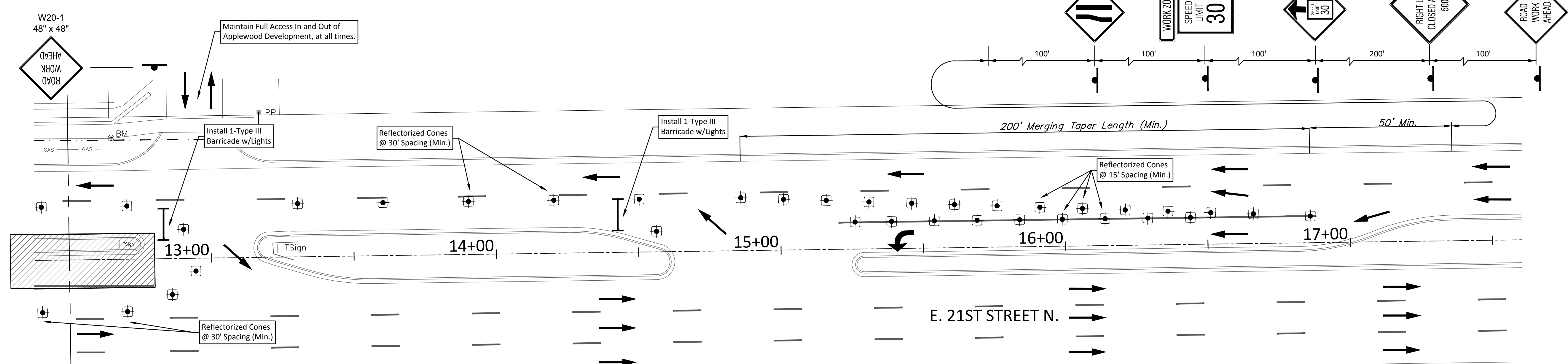
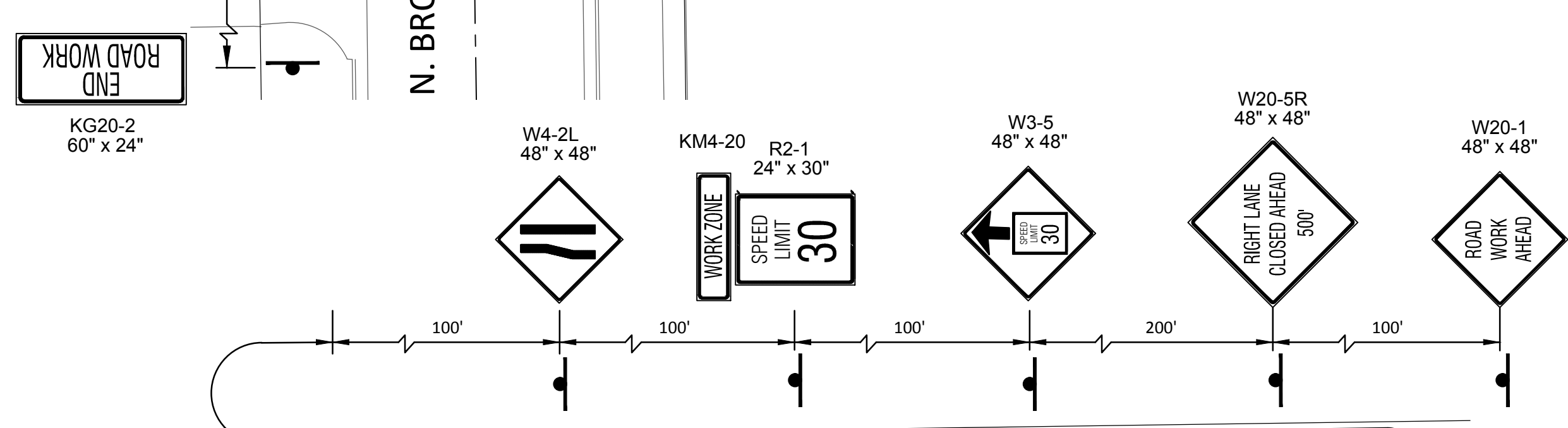
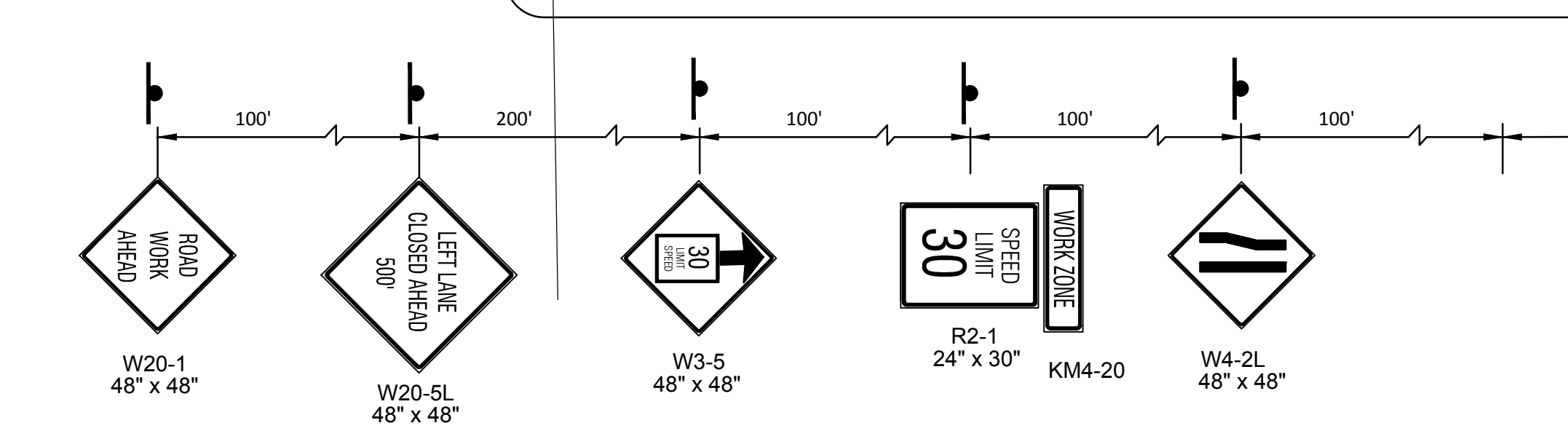
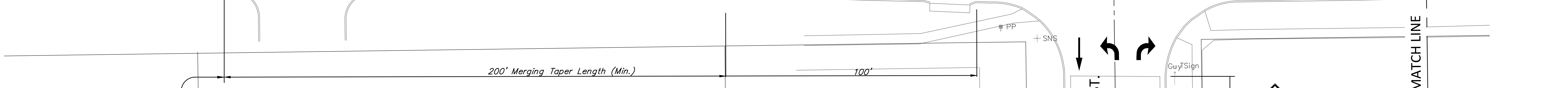
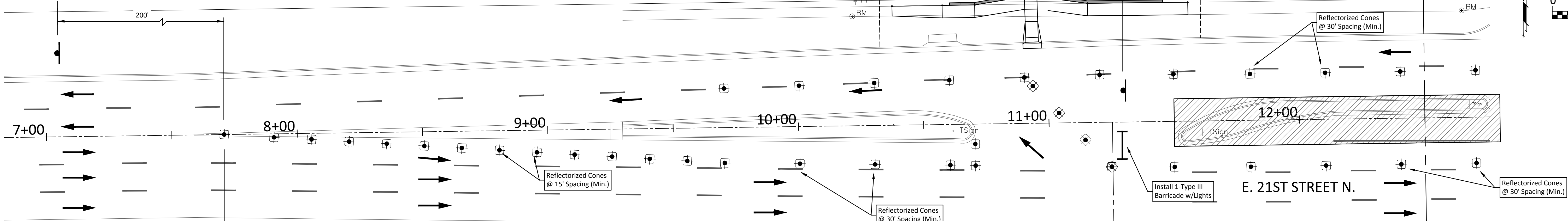


KG20-2
60" x 24"

END
ROAD WORK

R3-2
24" x 24"

SCALE: 1" = 20'
0 20

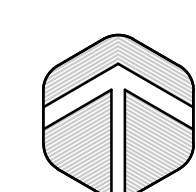


TRAFFIC CONTROL LEGEND

- ← → TRAFFIC FLOW
- ⊙ CONICAL DELINEATORS
- TUBULAR MARKERS
- I TYPE III BARRICADE
- ⊙ TRAFFIC SIGN
- DRUM
- △ TYPE I BARRICADE
- ▨ WORK ZONE

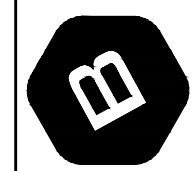
PHASE 2
Remove Existing Median and Repave Center Lane. Maintain One Lane Westbound and Two Lanes Eastbound During Phase. Limit Left Turn Movements into Broadmoor and Applewood Development.

KG20-2
60" x 24"



TRAFFIC CONTROL PLAN

BAUGHMAN COMPANY
315 Ellis St. Wichita, KS 67211 316-262-7271
BaughmanCo.com



21ST STREET & BROADMOOR INTERSECTION
TRAFFIC CONTROL PLAN
PHASE 2
PAVING & SIGNAL IMPROVEMENTS

PROJECT NUMBER: #1111
INTERNAL NUMBER: 20-02-E500
DESIGN: ENG
DRAWN: JSB
DATE: Mar, 2022
SHEET
OF 19
30