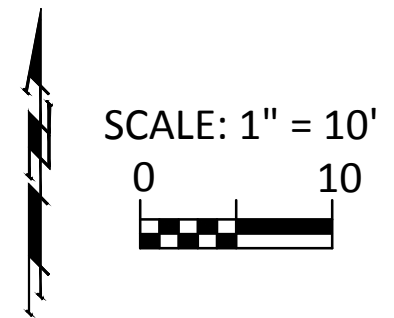
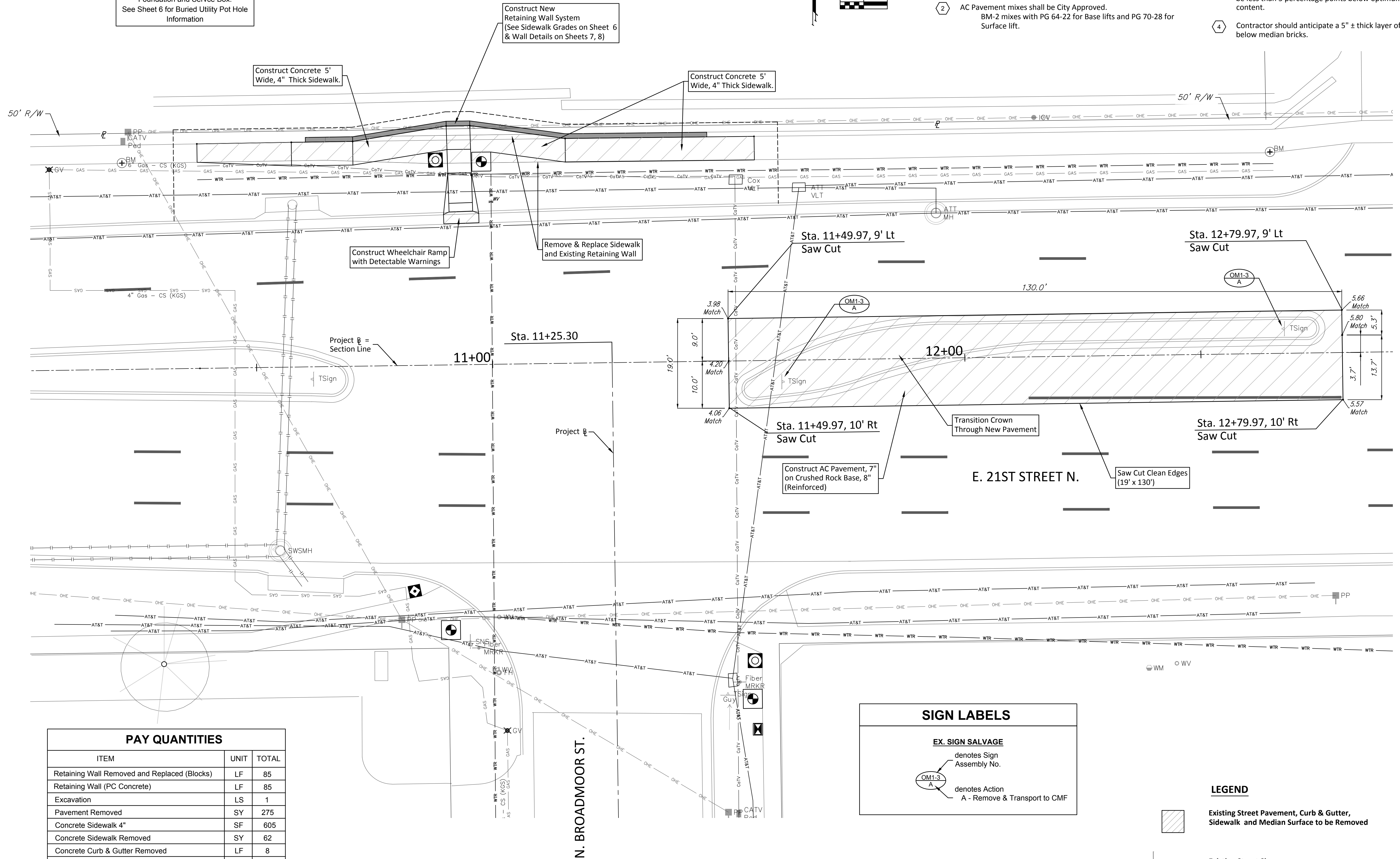


CAUTION
Contractor to Verify Depth and Location of Existing Utilities prior to Construction of Retaining Wall, Traffic Signal Pole Foundation and Service Box. See Sheet 6 for Buried Utility Pot Hole Information

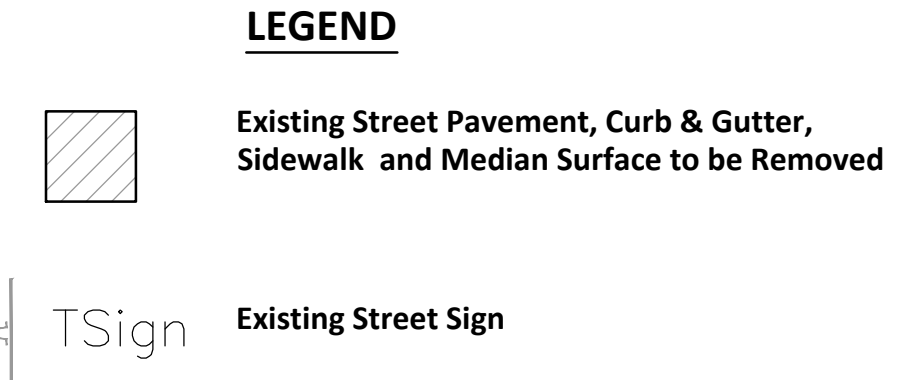
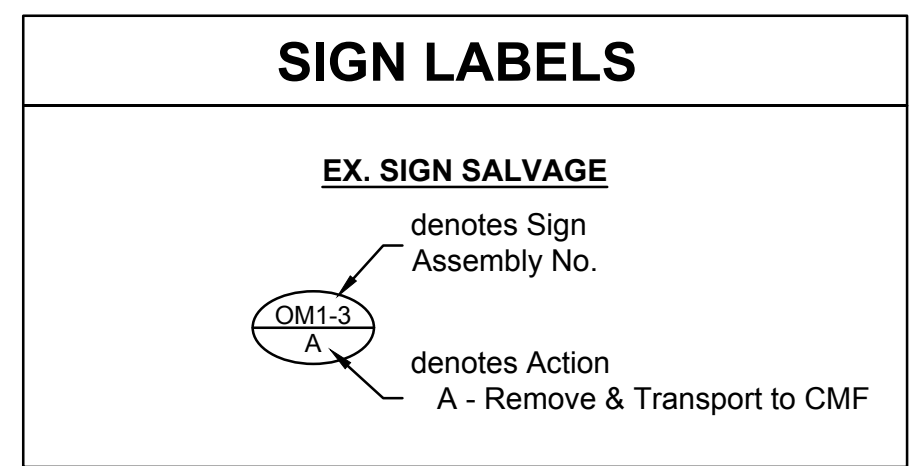


NOTES

- 1 The Proposed Asphalt Street Pavement Surface shall be Sawed and Sealed along Longitudinal and Transverse edges abutting existing Asphalt Pavement.
- 2 AC Pavement mixes shall be City Approved. BM-2 mixes with PG 64-22 for Base lifts and PG 70-28 for Surface lift.
- 3 Contractor shall manipulate a 6" Foundation Treatment Layer below Crushed Rock Base. Compact to a density equal to or greater than 95% Standard Proctor. Moisture content shall not be less than 5 percentage points below optimum moisture content.
- 4 Contractor should anticipate a 5" ± thick layer of PC Concrete below median bricks.



PAY QUANTITIES		
ITEM	UNIT	TOTAL
Retaining Wall Removed and Replaced (Blocks)	LF	85
Retaining Wall (PC Concrete)	LF	85
Excavation	LS	1
Pavement Removed	SY	275
Concrete Sidewalk 4"	SF	605
Concrete Sidewalk Removed	SY	62
Concrete Curb & Gutter Removed	LF	8
AC Pavement 7" (5" Bit. Base)	SY	275
Crushed Rock Base 8" Reinforced	SY	275
Wheelchair Ramp w/Detectable Warnings	EA	1



BAUGHMAN COMPANY
 315 Ellis St. Wichita, KS 67211 316-262-7271
 BaughmanCo.com

21ST STREET & BROADMOOR INTERSECTION
21ST STREET & BROADMOOR
PAVING PLAN
 PAVING & SIGNAL IMPROVEMENTS

PROJECT NUMBER: #1111
 INTERNAL NUMBER: 20-02-E500
 DESIGN: ENG
 DRAWN: JSB
 DATE: Mar, 2022
 SHEET
 OF
4
30