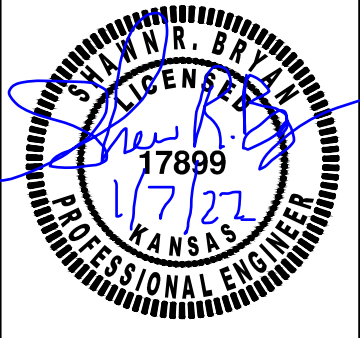


NOTE:
CONTRACTOR TO VERIFY DEPTH AND LOCATION OF ALL EXISTING UTILITIES PRIOR TO CONSTRUCTION. ALL FINDINGS AND DISCREPANCIES AND/OR CONFLICTS SHALL BE PROMPTLY REPORTED TO THE ENGINEER.

THIS PLAN SHEET IS PART OF AN OVERALL KAW VALLEY ENGINEERING PLAN SET FOR THE SPECIFIC IMPROVEMENTS CONTEMPLATED THEREIN. AS SUCH, THE INFORMATION REFLECTED HEREIN SHOULD ONLY BE INTERPRETED WITHIN THE CONTEXT OF THE COMPLETE PLAN SET.

THE COORDINATES PROVIDED IN THESE PLANS ARE FOR INFORMATION AND CHECKING PURPOSES ONLY. IT IS THE CONTRACTOR'S RESPONSIBILITY TO CALCULATE CONSTRUCTION STAKING COORDINATES ACCORDING TO THE DIMENSIONS SHOWN ON THESE PLANS. CONTRACTOR SHALL VERIFY THE ACCURACY OF THE COORDINATES SHOWN IN THE TABLE HEREON BEFORE CONSTRUCTION.

		SRB	AL	MT
		SRB	AL	MT
		SRB	AL	MT
2	01-07-22	FINAL SET		
1	12-03-21	PRLM. CITY REVIEW		
		REV DATE		DESCRIPTION



SHAWN R. BRYAN
ENGINEER
KS # 17899

200 N. EMPORIA, SUITE 100
WICHITA, KANSAS 67202
PH. (316) 440-4304 | FAX. (316) 440-4309
www.kaveg.com | www.kveig.com

KAW VALLEY ENGINEERING

KAW VALLEY ENGINEERING, INC., IS AUTHORIZED TO OFFER ENGINEERING SERVICES BY KANSAS STATE CERTIFICATE OF AUTHORIZATION # E-113. EXPIRES 12/31/22

**MACWEST SANITARY SEWER
MACARTHUR RD. & WEST ST.
WICHITA, KANSAS**

**SANITARY IMPROVEMENT PLANS
PLAN & PROFILE**

PROJ. NO.	G20_2024
DESIGNER	SRB
DRAWN BY	AL
CFN	
SHEET	2024SPP
REV	
02	2