

# GENERAL NOTES:

1. The Contractor shall comply with all applicable safety regulations. All construction shall be completed following current City Standard Specifications and Special Provisions.
2. Contractor will be required to provide notice to utility companies a minimum of seventy-two (72) hours prior to any excavation, as follows:

Kansas One-Call 687-2470

The Contractor must notify the following in case of an emergency:

AT&T 1-800-246-8464  
 Black Hills Energy 1-800-694-8989  
 City of Wichita Water & Sewer 1-316-219-8921  
 City of Wichita Stormwater 1-316-268-4090  
 City of Wichita Traffic 1-316-268-4034  
 Cox Communications 1-888-249-3530  
 Kansas Gas Service 1-888-482-4950  
 Energy 1-800-544-4857

3. Utility service lines, poles, etc. are to be adjusted as necessary by others prior to construction unless the plans specifically call for their adjustment by the Contractor or unless the plans specifically identify a utility to be adjusted by its owner during construction. Existing utilities and their location, as shown on the plans, represent the best information obtainable for design. The Contractor will be required to work around existing utilities within the right-of-way which do not conflict with proposed construction.
4. Rubble from the removal of miscellaneous structures and excess excavation which is to be wasted shall be disposed of on sites to be provided by the Contractor. These sites shall be approved by the Engineer as to suitability, appearance and site location. Locations, in the opinion of the Engineer, that will leave an unsightly appearance will not be approved. All disposal sites must be approved by the Kansas Department of Health and Environment. Material either stockpiled or disposed of in a flood plain will require a Kansas State Board of Agriculture permit. Any material dumped in waters of the United States or wetlands is subject to U.S. Corps of Engineers permitting regulations. Any material buried or stockpiled beyond approved construction limits will require additional archaeological investigations unless buried in a previously approved borrow location.

33. Construction Schedule: The bidder shall include in the bid package a proposed schedule for construction which will be considered in the awarding of the contract. Contact developer for their phasing preference.

5. Trees and shrubs in public right-of-way which are in direct conflict with proposed new construction shall be removed by the Contractor with the City Engineer's approval. Trees and shrubs which are not in direct conflict with proposed new construction shall be saved and protected from damage.
6. The Contractor shall give all property owners and/or tenants of developed property abutting the construction of this project a minimum of ten (10) days notice prior to start of construction.
7. The Contractor shall be responsible for preserving property irons. The Contractor will be required to re-establish any property irons which are damaged or destroyed by his construction operations. Such irons shall be re-established by a licensed land surveyor in accordance with state laws.

11. All elevations shown are NAVD88.

16. All stubs and capped pipes shall be located with green plastic tape in the same manner as risers.

17. Connecting to Existing Manholes: Prior to laying sewer lines using existing stubs in existing manholes, the Contractor shall expose and verify the elevation, grade and alignment of existing stubs and notify the Engineer of any deviation from the plans. Where the stub is unusable due to elevation grade or alignment, the Contractor shall remove the stub and plug the hole, and reshape the existing manhole invert to provide smooth flow. Where connection to an existing manhole that does not have an existing stub, the Contractor shall core cut into existing manhole wall to make connection using approved water stop gasket, and reshape the existing manhole invert to provide smooth flow. The cost of connect to existing manholes is incidental to the project.

18. Contractor shall limit the extent of trench open overnight and weekends to less than 50 feet.

19. Contractor shall provide positive drainage away from all manhole covers.

20. The Contractor shall prevent any construction debris from entering the existing sanitary sewer during construction.

23. The Contractor shall protect from damage and support existing utilities through construction as approved by the utility owner and the Engineer at the contractor's expense.

24. Contractor shall grade around exposed manholes at a 1:1 slope. Manholes set lower than existing grade shall have a 9" berm constructed around manhole to prevent infiltration into sanitary sewer system. Cost of dirt, labor, equipment, etc. to be incidental to cost of manhole. Easements shall be graded with the street improvement project as part of the mass grading plan.

25. All disturbed areas are to be seeded as follows:

Seed -- Rye grass; 5 lbs./1000 Sq. Ft.

All costs associated with seeding including mobilization, preparation of ground, seeding, fertilizing, mulching, etc. shall be included in the L.S. bid item "Seeding".

28. All existing and proposed erosion control measures including silt fencing, erosion control mat, straw bales, inlet barriers, and const. entrance shall be maintained throughout construction by the contractor and until project is accepted by the City of Wichita. The on-site engineer shall complete weekly reports on the status of erosion control measures. The contractor shall be required to comply with maintenance and/or replacement of erosion control measures as determined by the on-site engineer until project is accepted by City of Wichita. Maintenance and/or replacement of erosion control measures to be paid by L.S. bid item "Maintain Existing BMPs".

29. All excess excavation shall remain on-site and shall be stockpiled or spread at a location determined by the engineer.

30. Contractor shall contact Engineer for availability and location of contractor borrow.

32. The developer for this project is Jay W. Russell, P.O. Box 75337, Wichita, KS 67272 (316)722-2417 j@russellco.com

33. Construction Schedule: The bidder shall include in the bid package a proposed schedule for construction which will be considered in the awarding of the contract. Contact developer for their phasing preference.

# SANITARY SEWER IMPROVEMENTS to serve PIKE ADDITION - PH. 3

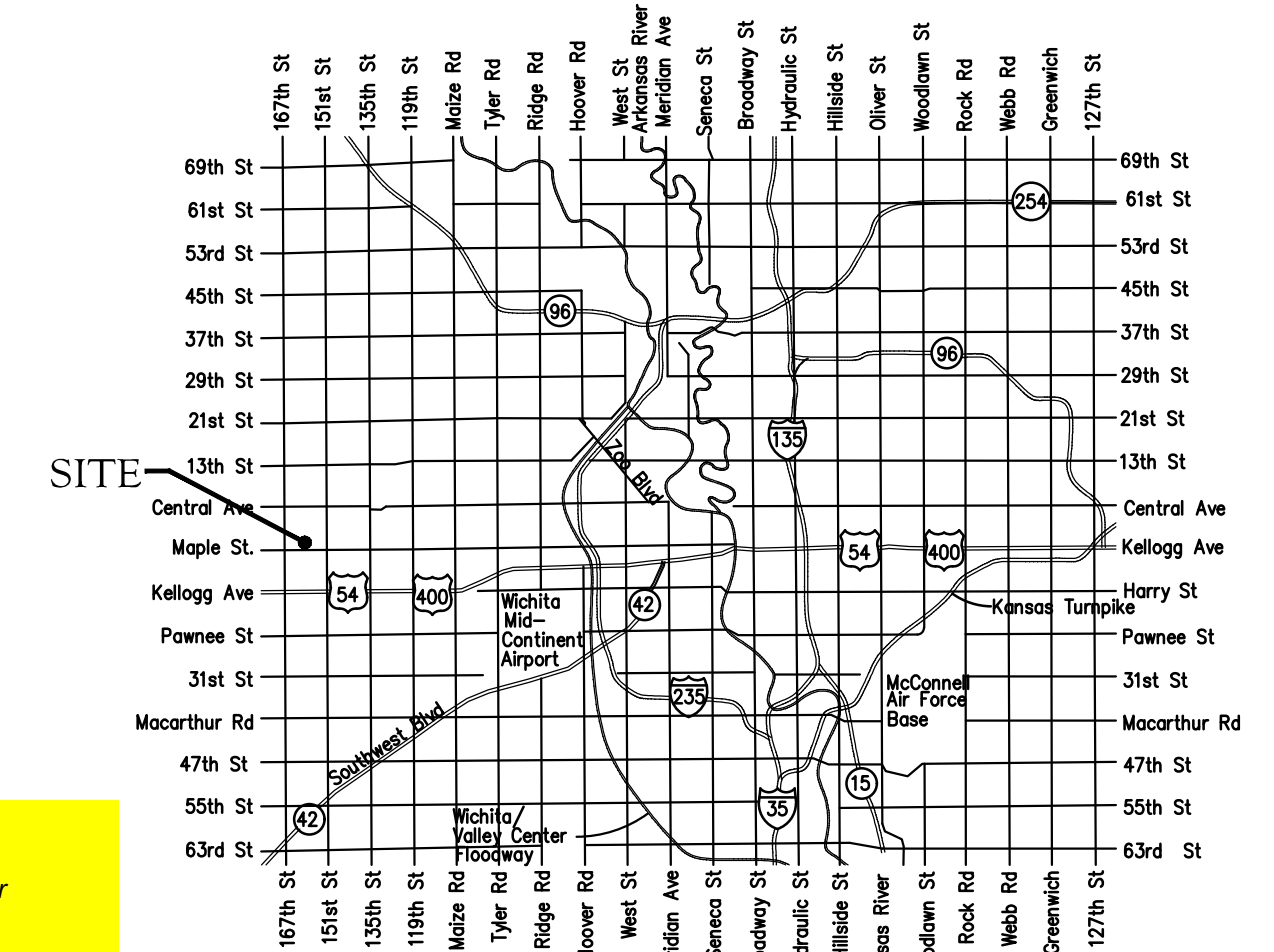
## CITY OF WICHITA, KANSAS

Gary Janzen, P.E. City Engineer

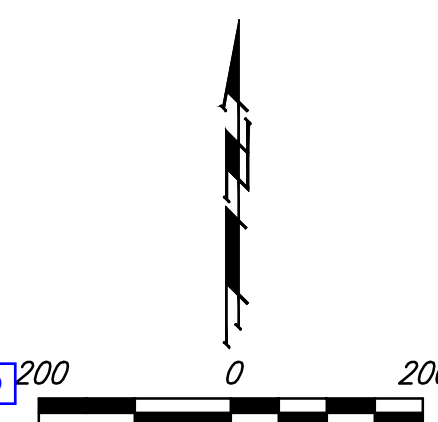
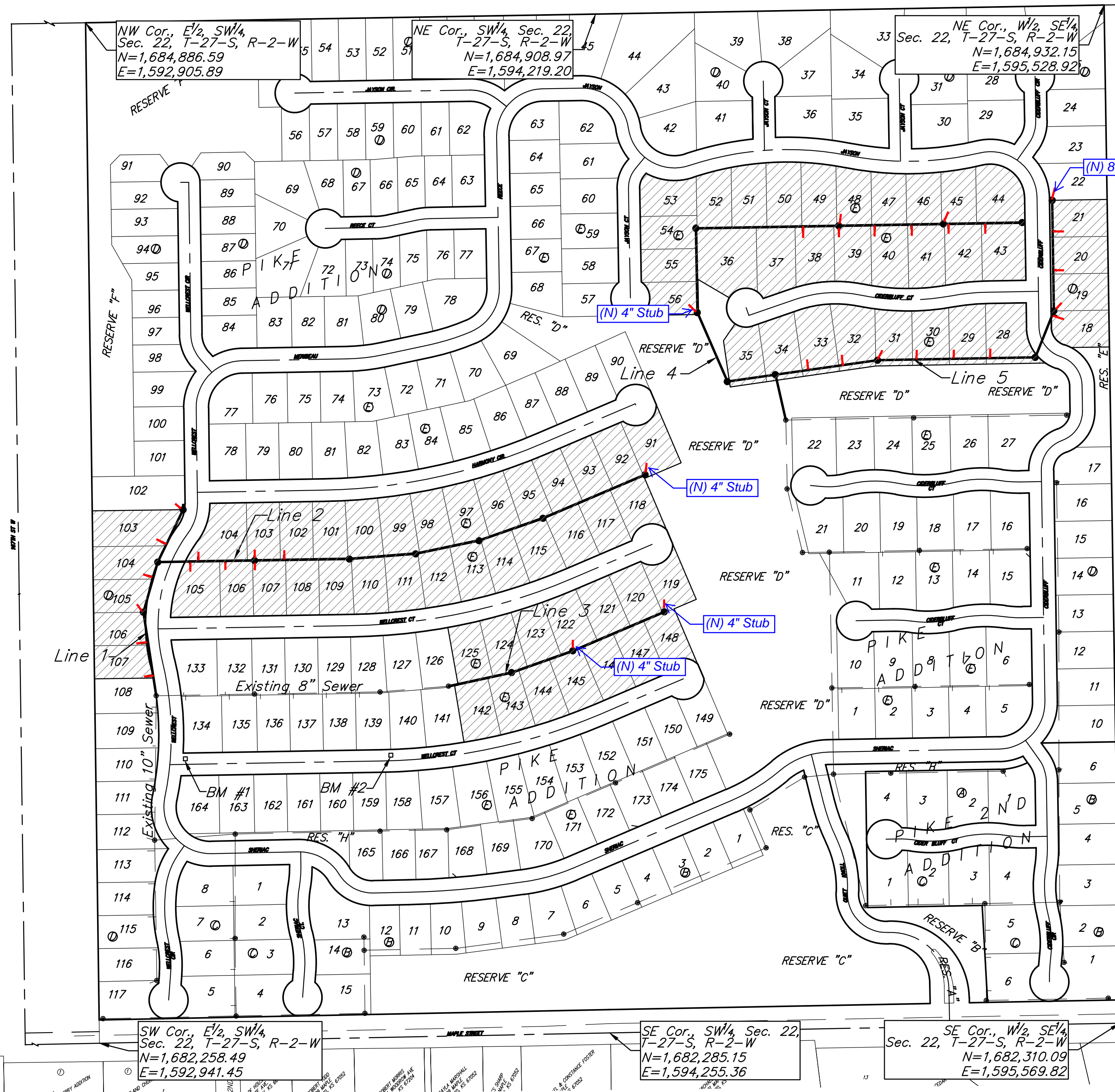
Project Number  
468-2020-008356

Org Code 47259119  
Munis Number E0098

Nowak Construction - Contractor  
 K. Kerns - City of Wichita, Field Project Engineer  
 R. Carrillo - City of Wichita, Inspector  
 As-built  
 Stubs & Risers  
 Release Date (for connection purposes only): 5/6/2022  
 Completion Date:  
 pdf, apr 5/9/2022



Vicinity Map



### Sheet Index

Title Sheet	1
Line 1	2
Line 2	3-4
Line 3	5
Line 4	6-7
Line 5	8-9
Erosion Control Plan	10
Precast SS Manhole Detail	11
Manhole Frame & Cover Detail	12
Vertical Riser Detail	13
Erosion Control BMP Details	14-18
Coordinate Sheet	19-20
Copy of Plat	21-22

APPROVED AS NOTED  
 BY WICHITA PUBLIC WORKS ENGINEERING DIVISION  
 Engineering *Shan Miller* 8-2-2021  
 An approved copy of these plans signed by City staff are required on-site.

### Benchmarks

BM #1: City of Wichita disc adjacent to fire hydrant at SW corner of Lot 134, Block E, Pike Addition.  
 Elev. = 1425.30 NAVD88

BM #2: City of Wichita disc adjacent to fire hydrant at SE corner of Lot 139, Block E, Pike Addition.  
 Elev. = 1425.59 NAVD88

Benefit District

**BAUGHMAN COMPANY**  
 315 Ellis St. Wichita, KS 67211 316-262-7271  
 BaughmanCo.com



July 27, 2021

Sanitary Sewer Riser Location Table

Project Name: Pike Add. Ph. 3

Project Location: Maple E. at 1167<sup>th</sup>

Project No.: 468-2020-008356

OCA No.: 47259119/E0098

Contractor: Nowak

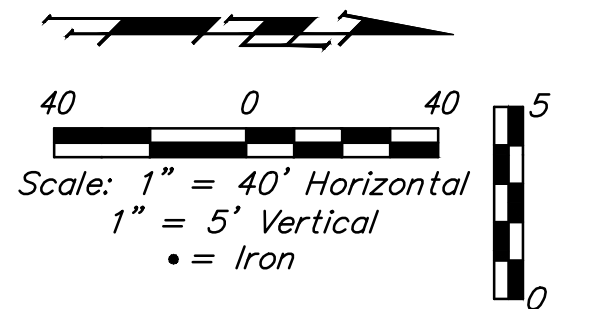
Inspector: R Carrillo

Riser No.	Line No.	Station	Distance from Main to Riser (Lt./Rt.)	Distance from	
				Upstream MH	Downstream MH
1	1	0+53.3	15.8 LT	164.5	153.3
2	1	1+99.7	18.7 LT	78.1	139.7
3	1	2+17.8	10.7 LT	AT MH	
4	1	3+10.9	17.3 LT	41	93.1
5	1	4+03.2	6.8 LT	98.8	51.3
6	1	5+02	12.1 LT	AT MH	
7	2	0+83.2	7 RT	166	83.2
8	2	1+04.2	13.1 LT	145	104.2
9	2	1+74.2	7 RT	75	174.2
10	2	2+49.2	13 LT	AT MH	
11	2	2+49.2	6.9 RT	AT MH	
12	2	3+25.6	13 LT	167.9	76.4
13	2	12+92.2	15 LT	AT MH	
14	3	3+33.6	7 LT	AT MH	
15	3	5+89.5	7.5 LT	AT MH	
16	4	4+38.9	8.5 LT	AT MH	
17	4	9+31.4	13 RT	92.6	275.4
18	4	10+24	7.4 LT	AT MH	
19	4	10+24	13.1 RT	AT MH	
20	4	11+16.4	13 RT	177.6	92.4
21	4	12+11.4	13 RT	82.6	187.4
22	4	12+94	7.5 LT	AT MH	
23	4	13+06.4	13 RT	190.2	12.4
24	4	14+01.4	13 RT	95.2	107.4
25	5	0+85	5 LT	180.7	85
26	5	1+75	5 LT	90.7	175
27	5	2+65.7	5 LT	AT MH	
28	5	3+65.7	5 LT	306.2	100
29	5	4+60.7	5 LT	211.2	195
30	5	5+55.7	5 LT	116.2	290



**BENCHMARKS:**  
 BM #1: City of Wichita disc adjacent to fire hydrant at SW corner of Lot 134, Block E, Pike Addition.  
 Elev. = 1425.30 NAVD88

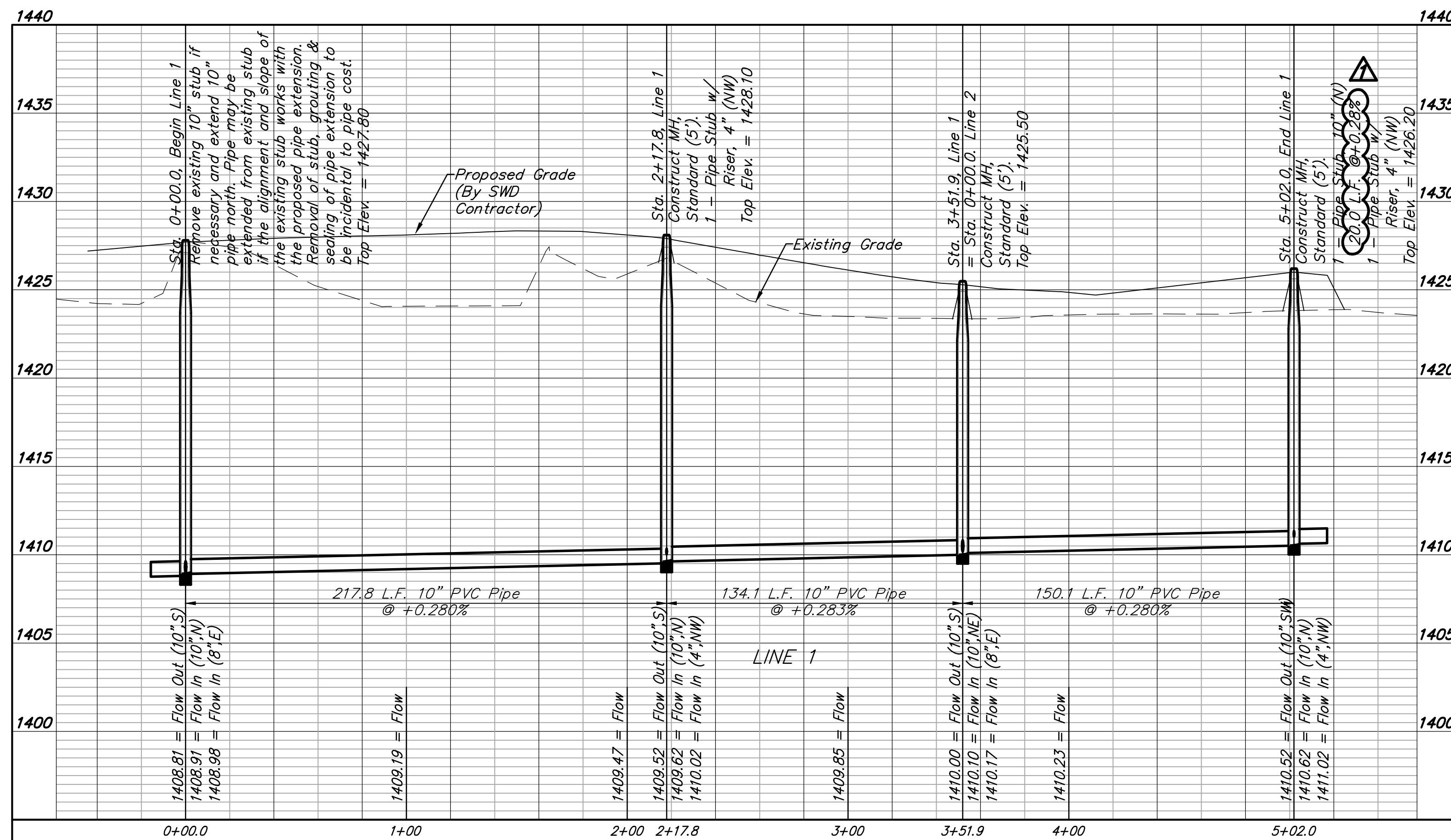
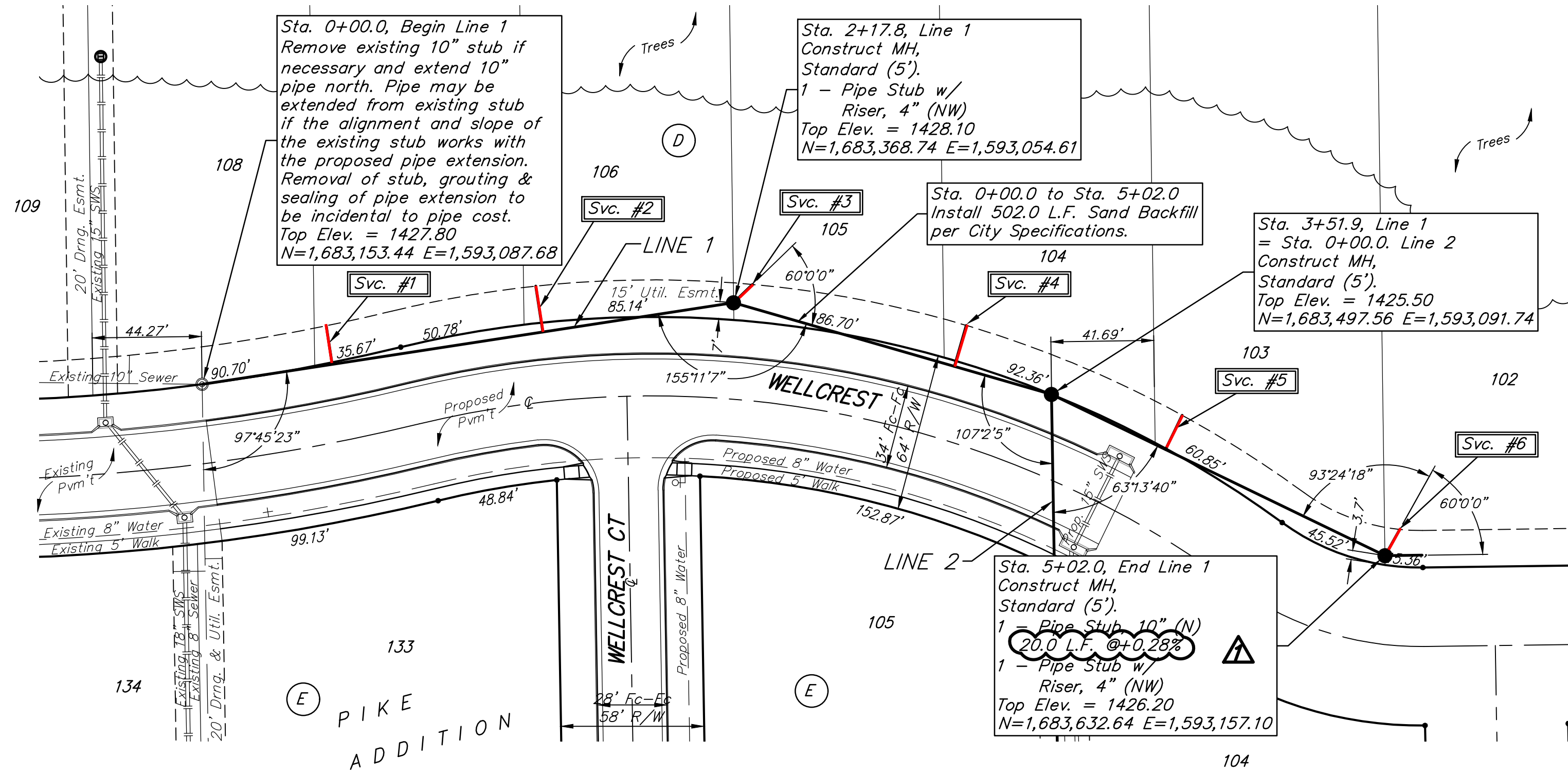
BM #2: City of Wichita disc adjacent to fire hydrant at SE corner of Lot 139, Block E, Pike Addition.  
 Elev. = 1425.59 NAVD88



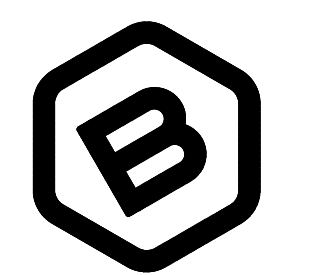
**SEWER SERVICE TABLE**

Distance from Main to Riser (L/Rt.)	Distance from		NUMBER	TYPE	LOCATION			FOR INFORMATION ONLY		
	Upstream MH	Downstream MH			LOT NO.	BLOCK NO.	LINE NO.	STATION \ DIRECTION	APPROXIMATE LENGTH 4" PIPE	VERTICAL
16' Lt.	164.5'	53'	1	10" X 4" Tee W/Riser	107	D	1	0+53.3/Lt.	15.0'	15.8'
19' Lt.	78'	140'	2	10" X 4" Tee W/Riser	106	D	1	1+39.7/Lt.	15.0'	18.8'
11' Lt.	@ mh		3	4" Stub W/Riser	105	D	1	2+17.8/Lt.	14.5'	10.7'
17' Lt.	41'	93'	4	10" X 4" Tee W/Riser	104	D	1	3+10.9/Lt.	12.5'	17.3'
7' Lt.	99'	52'	5	10" X 4" Tee W/Riser	103	D	1	4+03.2/Lt.	10.5'	6.7'
12' Lt.	@mh		6	4" Stub W/Riser	102	D	1	5+02.0/Lt.	11.5'	12.2'

NOTE: Vertical Riser Pipe shall be extended to 2' minimum above ground water elevation and 4' maximum below proposed ground elevation.



Contractor shall verify elevation and alignment of existing 10" pipe prior to construction and notify Engineer of any discrepancy.



**BAUGHMAN COMPANY**  
 315 Ellis St.  
 Wichita, KS 67211  
 316-262-7271  
 BaughmanCo.com

PIKE ADDITION  
 Phase 3

**LINE 1**

SANITARY SEWER IMPROVEMENTS

PROJECT NUMBER:  
 20-11-E769

DESIGN: AEG DRAWN: TMS

DATE: July 20, 2021

SHEET 2 OF 22

File: E:\Projects\Pike Addition - Engineering\Phase 3\Sewer\Sewer Revised.dwg

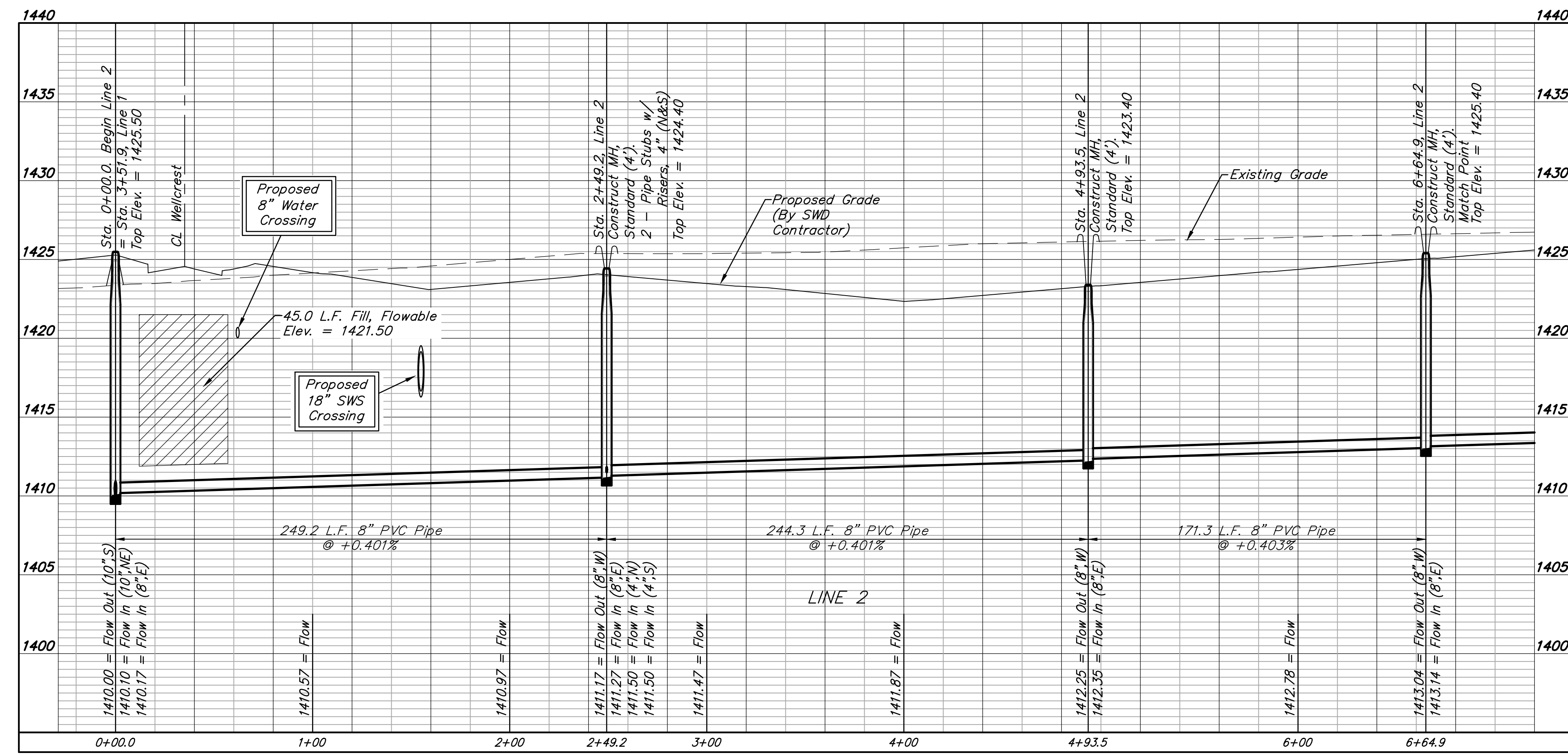
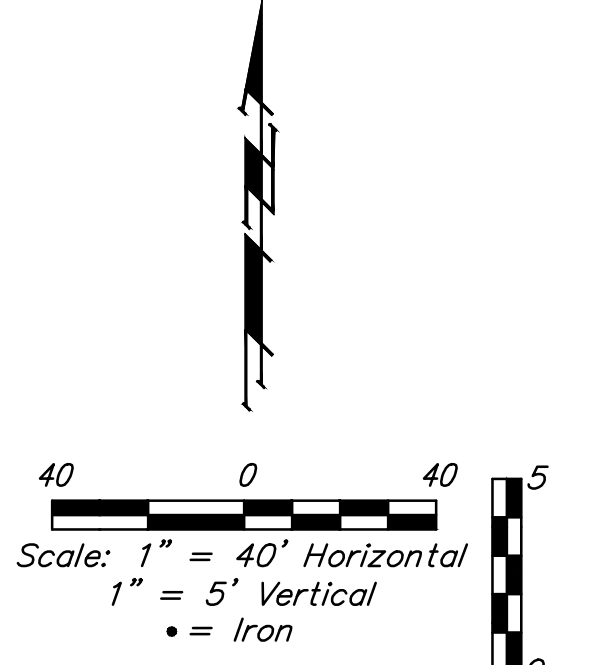
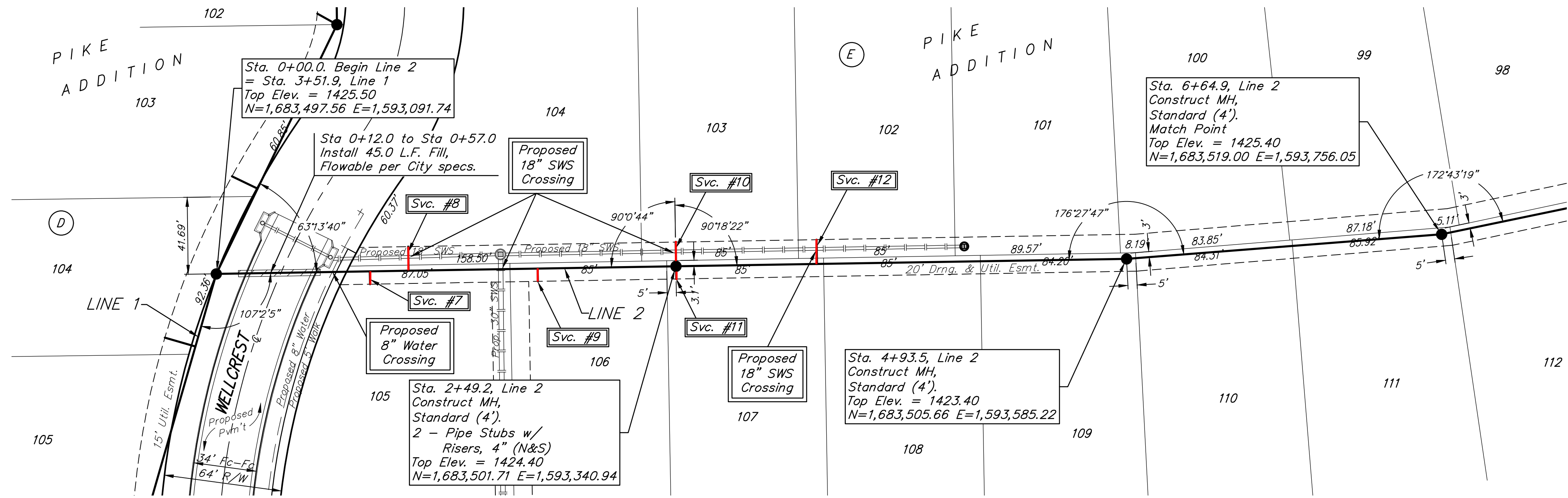
**BENCHMARKS:**  
 BM #1: City of Wichita disc adjacent to fire hydrant at SW corner of Lot 134, Block E, Pike Addition.  
 Elev. = 1425.30 NAVD88

BM #2: City of Wichita disc adjacent to fire hydrant at SE corner of Lot 139, Block E, Pike Addition.  
 Elev. = 1425.59 NAVD88

**SEWER SERVICE TABLE**

Distance from Main to Riser (L/Rt.)	Distance from MH		NUMBER	TYPE	LOCATION			FOR INFORMATION ONLY		
	Upstream	Downstream			LOT NO.	BLOCK NO.	LINE NO.	STATION \ DIRECTION	APPROXIMATE LENGTH 4" PIPE	VERTICAL
7' Rt.	166'	83'	7	8" X 4" Tee W/Riser	105	E	2	0+83.2/Rt.	9.5'	7.0'
13' Lt.	145'	104'	8	8" X 4" Tee W/Riser	104	E	2	1+04.2/Lt.	9.5'	13.0'
7' Rt.	75'	174'	9	8" X 4" Tee W/Riser	106	E	2	1+74.2/Rt.	9.0'	7.0'
13' Lt.	@ mh		10	4" Stub W/Riser	103	E	2	2+49.2/Lt.	9.0'	13.0'
7' Rt.	@ mh		11	4" Stub W/Riser	107	E	2	2+49.2/Rt.	9.0'	7.0'
13' Lt.	168'	76'	12	8" X 4" Tee W/Riser	102	E	2	3+25.6/Lt.	9.0'	13.0'

NOTE: Vertical Riser Pipe shall be extended to 2' minimum above ground water elevation and 4' maximum below proposed ground elevation.



**BAUGHMAN COMPANY**  
 315 Ellis St.  
 Wichita, KS 67211  
 316-262-7271  
 BaughmanCo.com

PIKE ADDITION  
 Phase 3  
  
**LINE 2**  
  
 SANITARY SEWER  
 IMPROVEMENTS  
 PROJECT NUMBER:  
 20-11-E769  
 DESIGN: AEG DRAWN: TMS  
 DATE: July 19, 2021  
 SHEET **3** OF **22**

File: E:\Projects\Pike Addition\_Engineering\Phase 3\Sewer\Sewer.dwg

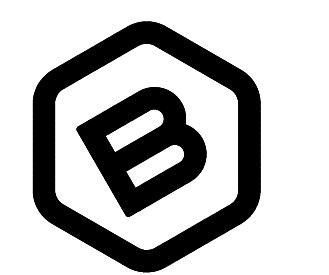
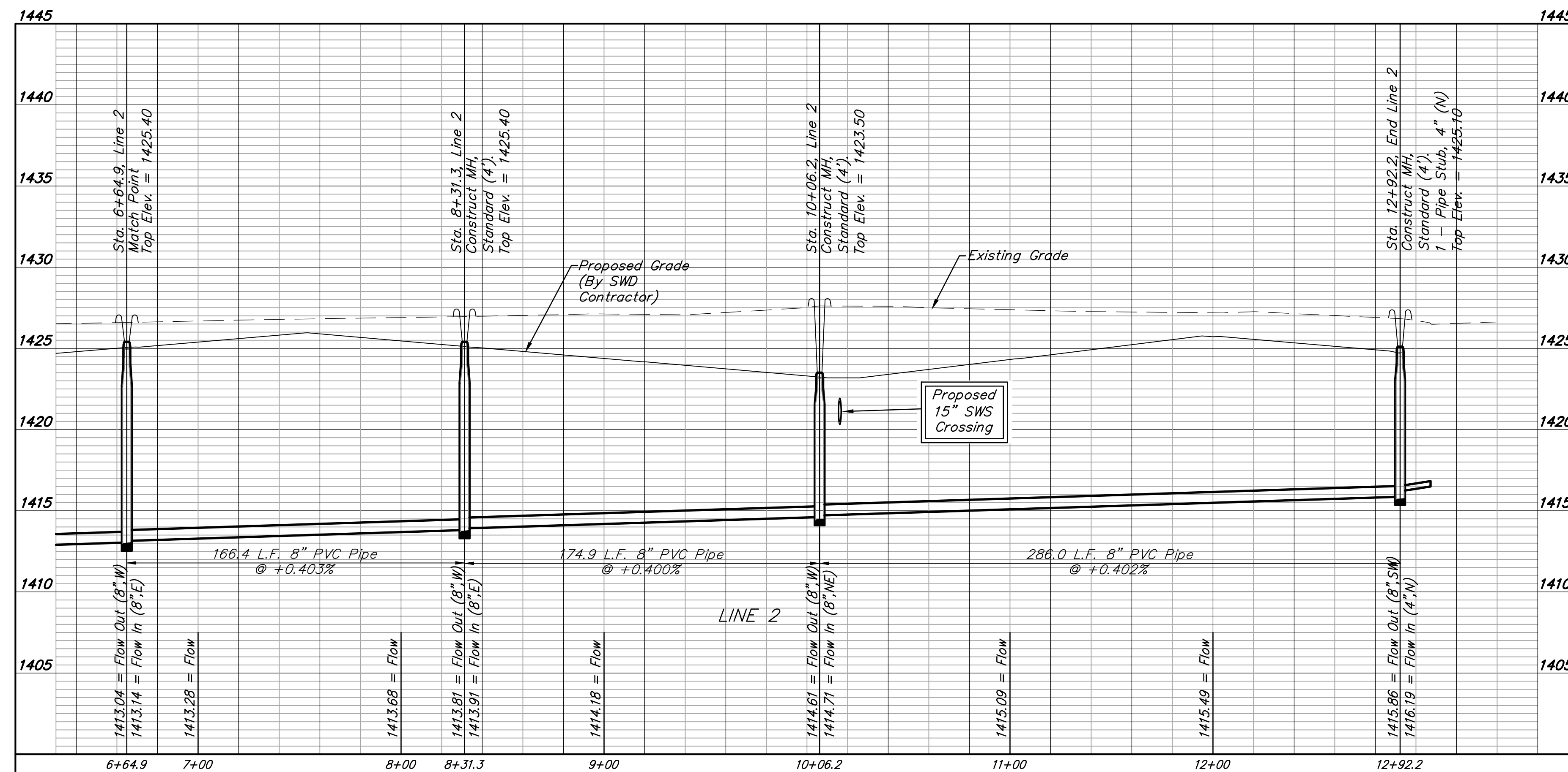
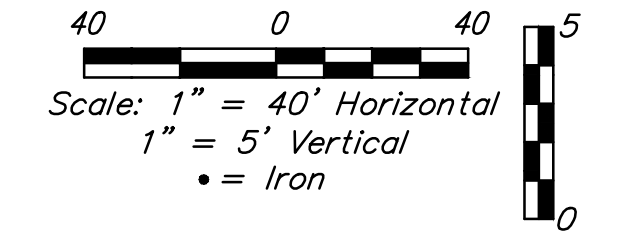
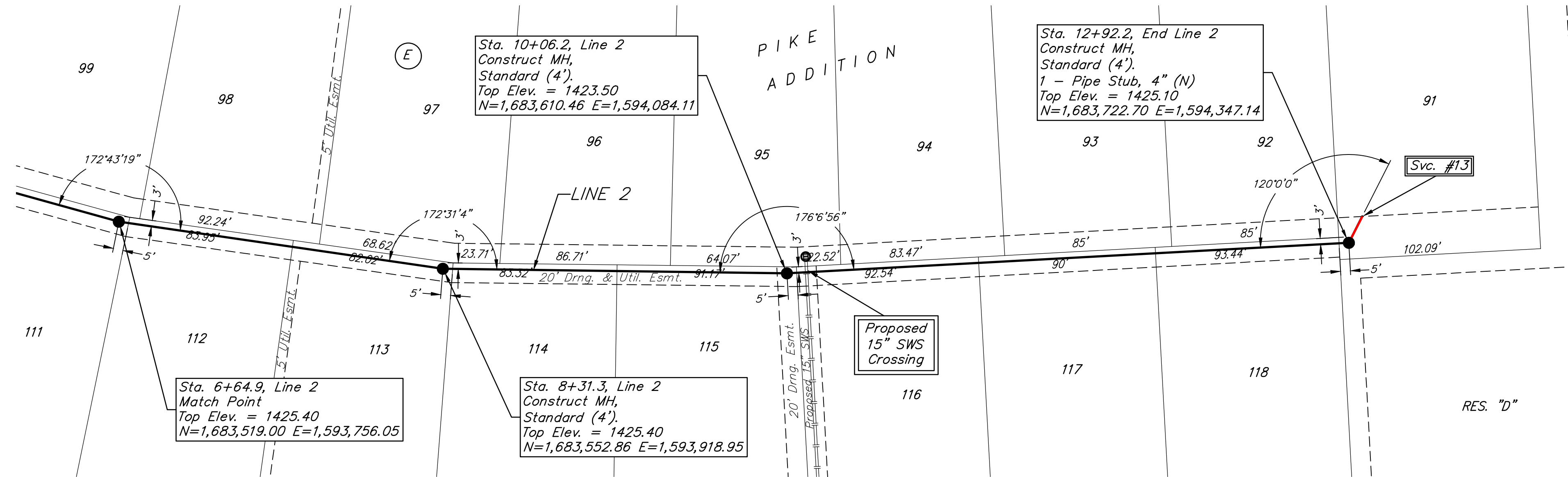
**BENCHMARKS:**  
 BM #1: City of Wichita disc adjacent to fire hydrant at SW corner of Lot 134, Block E, Pike Addition.  
 Elev. = 1425.30 NAVD88

BM #2: City of Wichita disc adjacent to fire hydrant at SE corner of Lot 139, Block E, Pike Addition.  
 Elev. = 1425.59 NAVD88

**SEWER SERVICE TABLE**

NUMBER	TYPE	LOCATION				FOR INFORMATION ONLY	
		LOT NO.	BLOCK NO.	LINE NO.	STATION \ DIRECTION	APPROXIMATE LENGTH 4" PIPE	VERTICAL
13	4" Stub	91	E	2	12+92.2/Lt.	-	15.0'

NOTE: Vertical Riser Pipe shall be extended to 2' minimum above ground water elevation and 4' maximum below proposed ground elevation.



**BAUGHMAN COMPANY**  
 315 Ellis St.  
 Wichita, KS 67211  
 316-262-7271  
 BaughmanCo.com

PIKE ADDITION  
 Phase 3  
**LINE 2**  
 SANITARY SEWER IMPROVEMENTS  
 PROJECT NUMBER:  
 20-11-E769  
 DESIGN: AEG DRAWN: TMS  
 DATE: July 19, 2021  
 SHEET **4** OF **22**

File: E:\Projects\Pike Addition\_Engineering\Phase 3\Sewer\Sewer.dwg

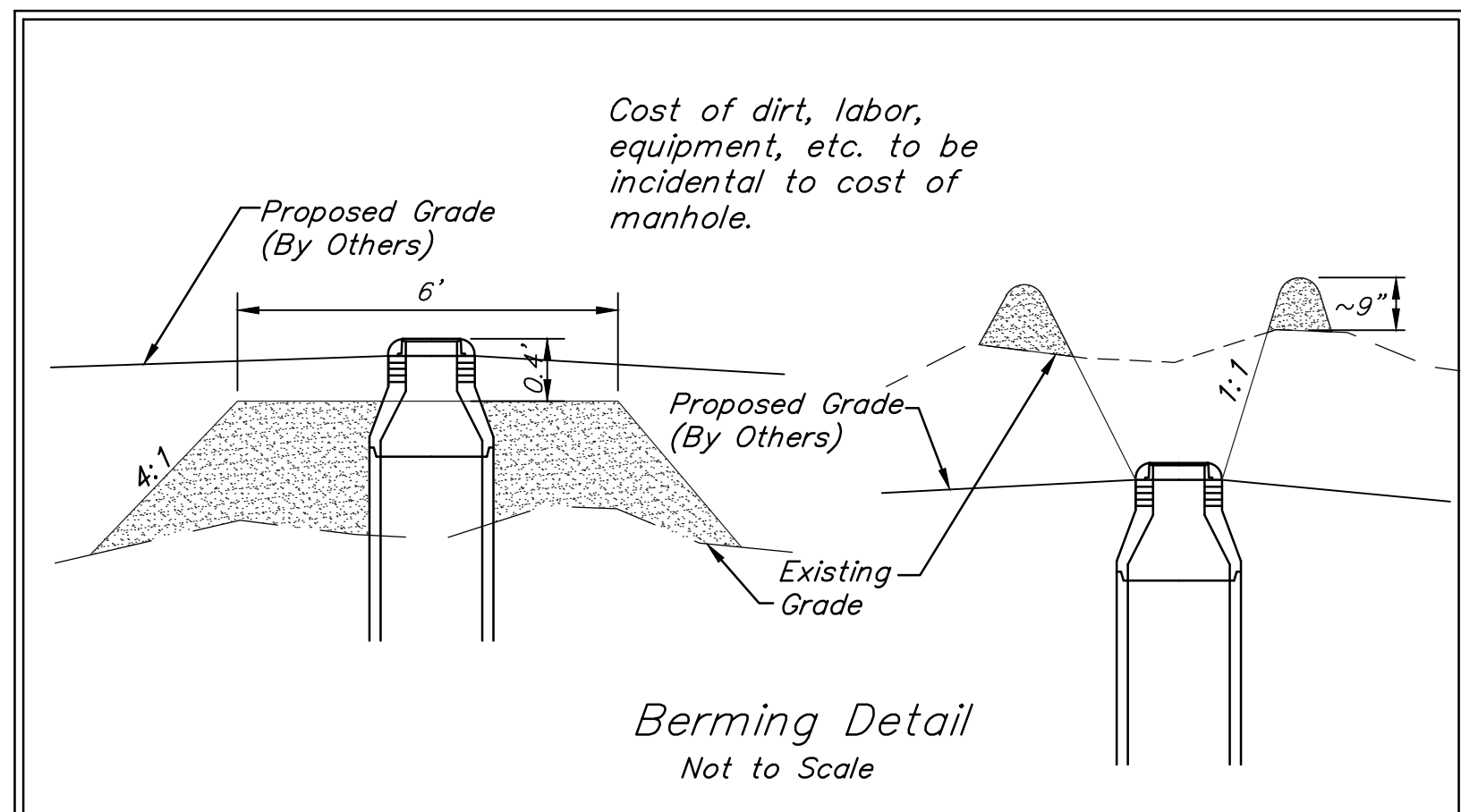
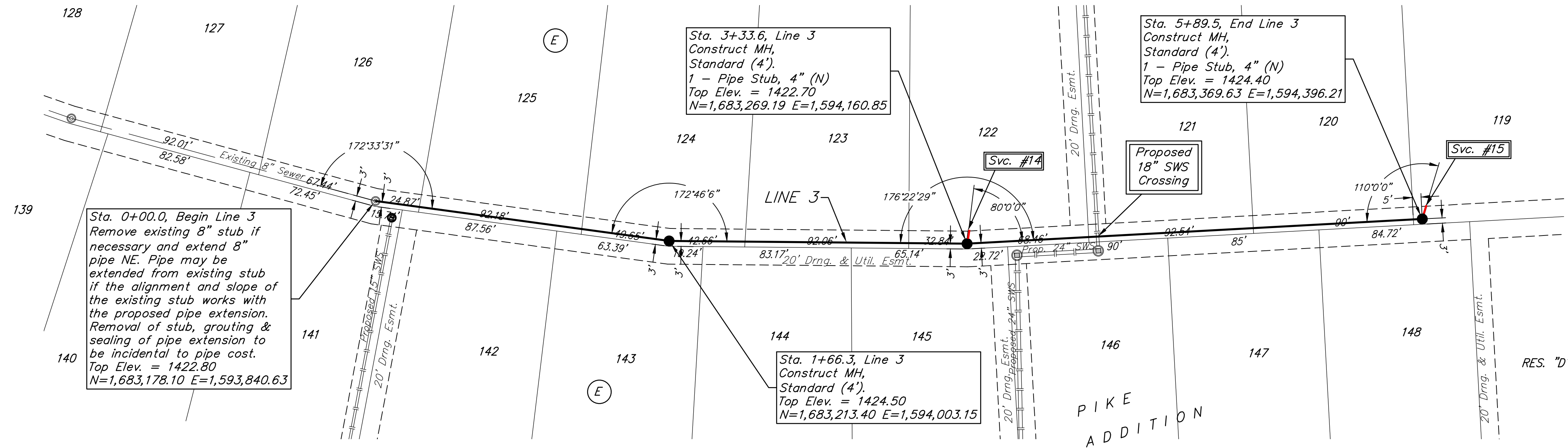
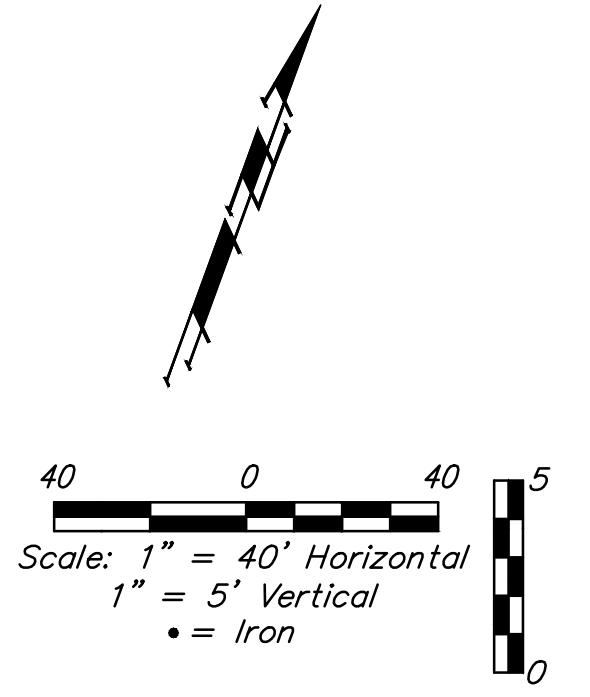
**BENCHMARKS:**  
 BM #1: City of Wichita disc adjacent to fire hydrant at SW corner of Lot 134, Block E, Pike Addition.  
 Elev. = 1425.30 NAVD88

BM #2: City of Wichita disc adjacent to fire hydrant at SE corner of Lot 139, Block E, Pike Addition.  
 Elev. = 1425.59 NAVD88

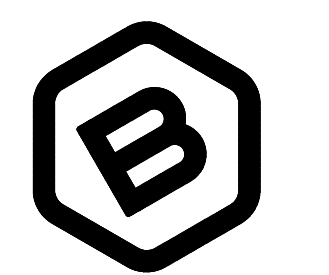
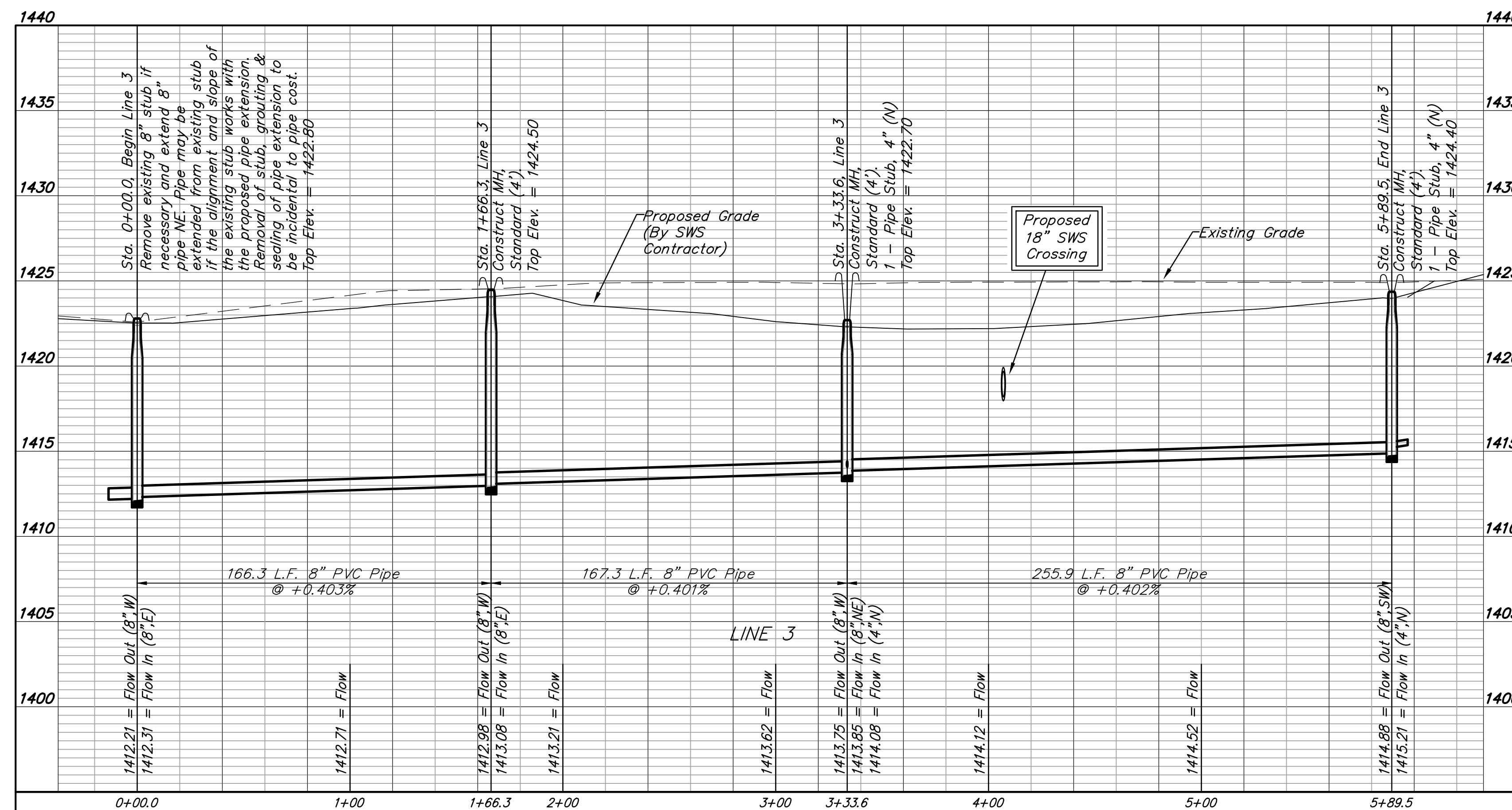
**SEWER SERVICE TABLE**

NUMBER	TYPE	LOCATION				FOR INFORMATION ONLY	
		LOT NO.	BLOCK NO.	LINE NO.	STATION DIRECTION	APPROXIMATE LENGTH 4" PIPE	VERTICAL HORIZONTAL
14	4" Stub	122	E	3	3+33.6/Lt.	-	7.1'
15	4" Stub	119	E	3	5+89.5/Lt.	-	7.5'

NOTE: Vertical Riser Pipe shall be extended to 2' minimum above ground water elevation and 4' maximum below proposed ground elevation.



Contractor shall verify elevation and alignment of existing 8" pipe prior to construction and notify Engineer of any discrepancy.



**BAUGHMAN COMPANY**  
 315 Ellis St.  
 Wichita, KS 67211  
 316-262-7271  
 BaughmanCo.com

PIKE ADDITION  
 Phase 3

**LINE 3**

SANITARY SEWER IMPROVEMENTS

PROJECT NUMBER:  
 20-11-E769

DESIGN: AEG DRAWN: TMS

DATE: July 19, 2021

SHEET **5** OF **22**

File: E:\Projects\Pike Addition - Engineering\Phase 3\Sewer\Sewer.dwg

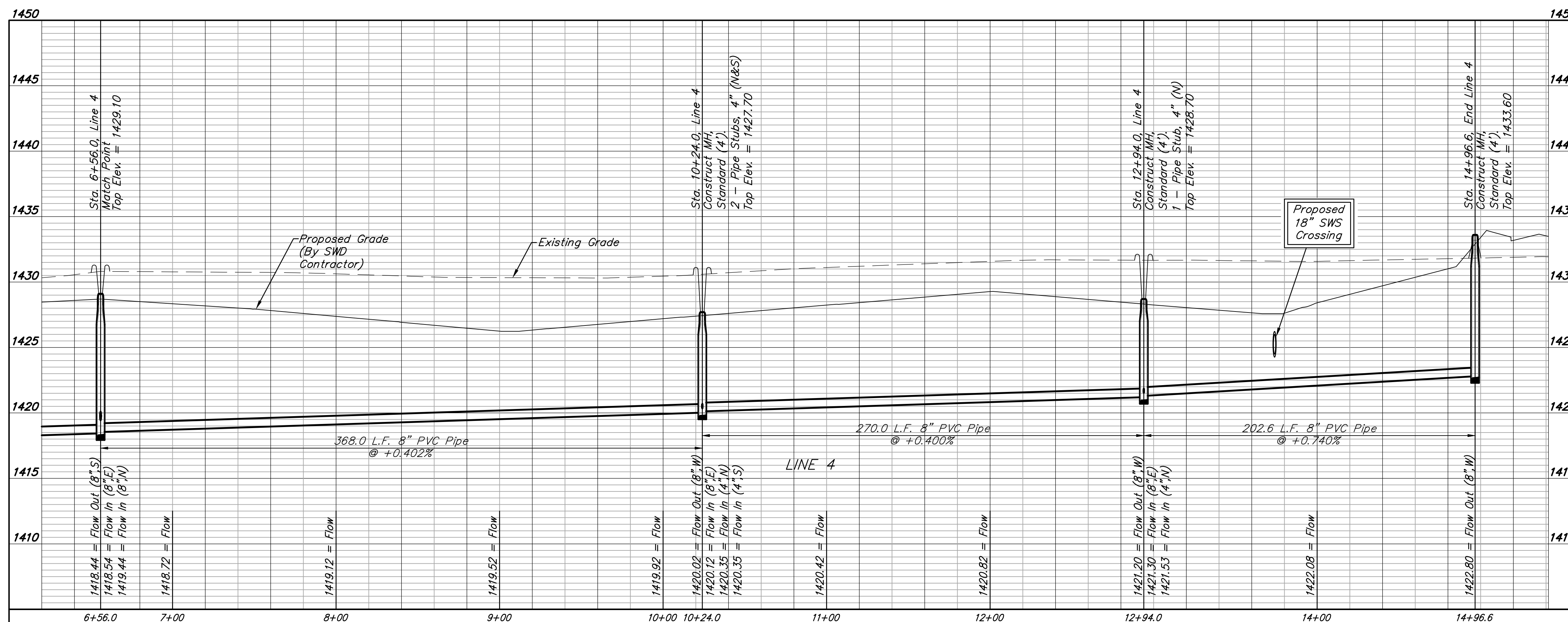
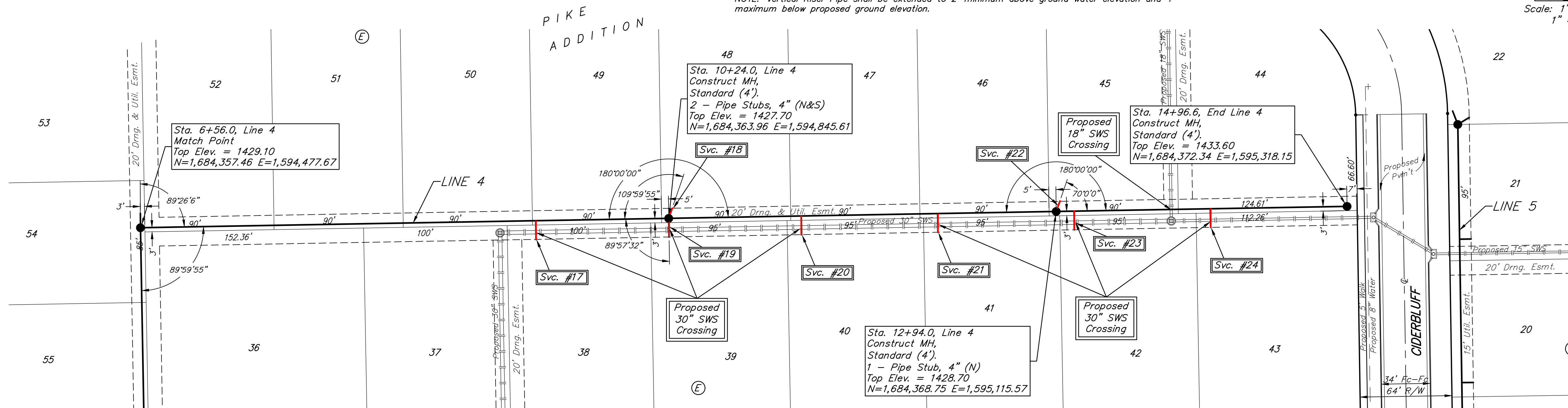
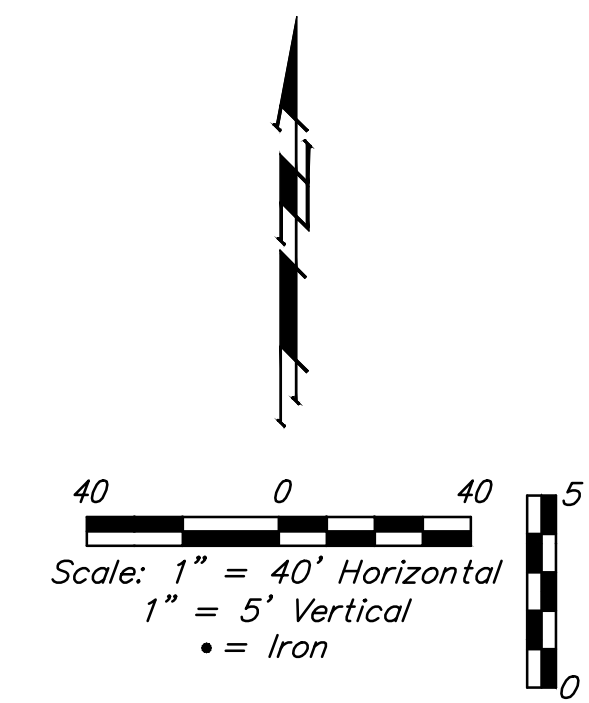


SEWER SERVICE TABLE

Distance from Main to Riser (L/L/Rt.)	Distance from		NUMBER	TYPE	LOCATION			FOR INFORMATION ONLY		
	Upstream MH	Downstream MH			LOT NO.	BLOCK NO.	LINE NO.	STATION \ DIRECTION	APPROXIMATE LENGTH 4" PIPE	VERTICAL
13' Rt.	93'	275'	17	8" X 4" Tee W/Riser	38	E	4	9+31.4/Rt.	-	13.0'
7.5' Lt.	@ mh		18	4" Stub	48	E	4	10+24.0/Lt.	-	7.5'
13' Rt.	@ mh		19	4" Stub	39	E	4	10+24.0/Rt.	-	13.0'
13' Rt.	178'	92'	20	8" X 4" Tee W/Riser	40	E	4	11+16.4/Rt.	-	13.0'
13' Rt.	83'	187'	21	8" X 4" Tee W/Riser	41	E	4	12+11.4/Rt.	-	13.0'
7.5' Lt.	@ mh		22	4" Stub	45	E	4	12+94.0/Lt.	-	7.5'
13' Rt.	190'	12'	23	8" X 4" Tee W/Riser	42	E	4	13+06.4/Rt.	-	13.0'
13' Rt.	95'	107'	24	8" X 4" Tee W/Riser	43	E	4	14+01.4/Rt.	-	13.0'

NOTE: Vertical Riser Pipe shall be extended to 2' minimum above ground water elevation and 4' maximum below proposed ground elevation.

**BENCHMARKS:**  
 BM #1: City of Wichita disc adjacent to fire hydrant at SW corner of Lot 134, Block E, Pike Addition.  
 Elev. = 1425.30 NAVD88  
 BM #2: City of Wichita disc adjacent to fire hydrant at SE corner of Lot 139, Block E, Pike Addition.  
 Elev. = 1425.59 NAVD88



**BAUGHMAN COMPANY**  
 315 Ellis St.  
 Wichita, KS 67211  
 316-262-7271  
 BaughmanCo.com

PIKE ADDITION  
 Phase 3  
**LINE 4**  
 SANITARY SEWER IMPROVEMENTS  
 PROJECT NUMBER:  
 20-11-E769  
 DESIGN: AEG DRAWN: TMS  
 DATE: July 19, 2021  
 SHEET **7** OF **22**

File: E:\Projects\Pike Addition - Engineering\Phase 3\Sewer\Sewer.dwg

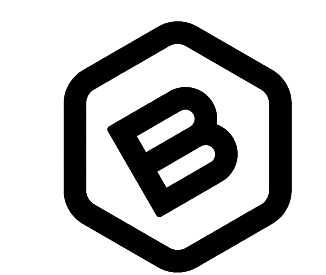
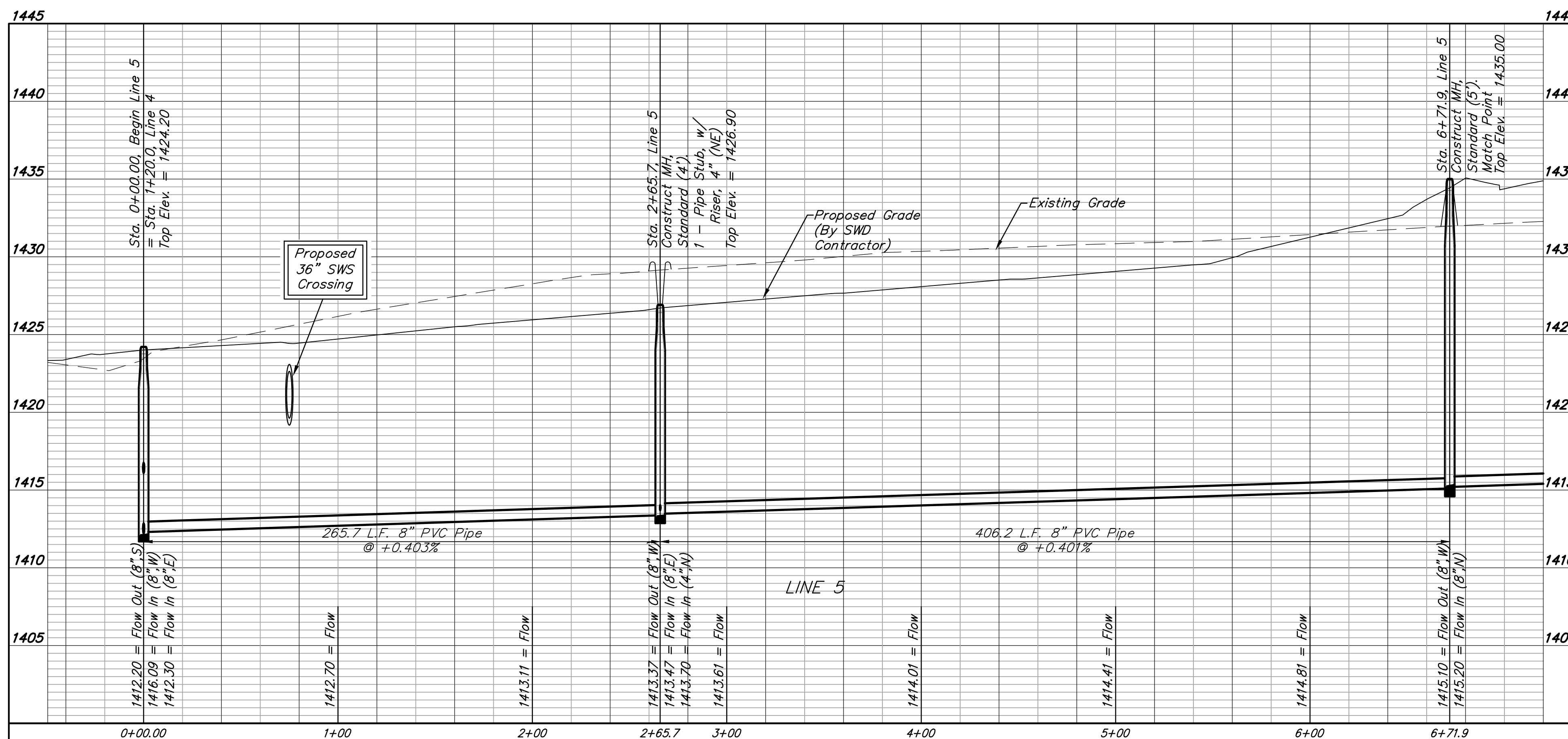
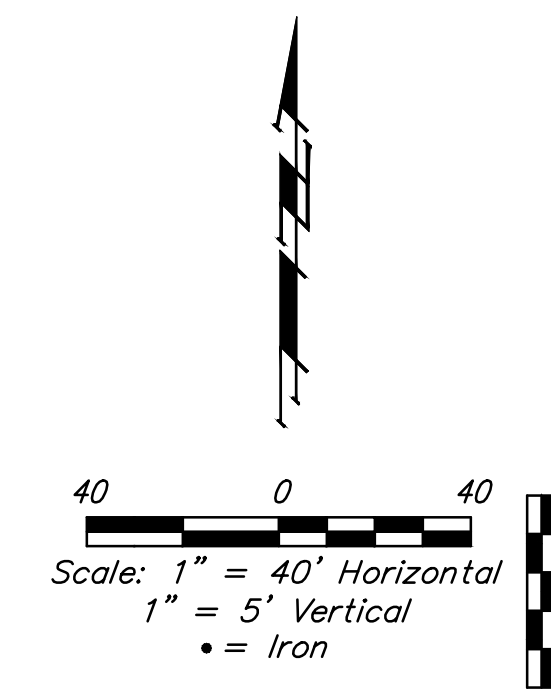
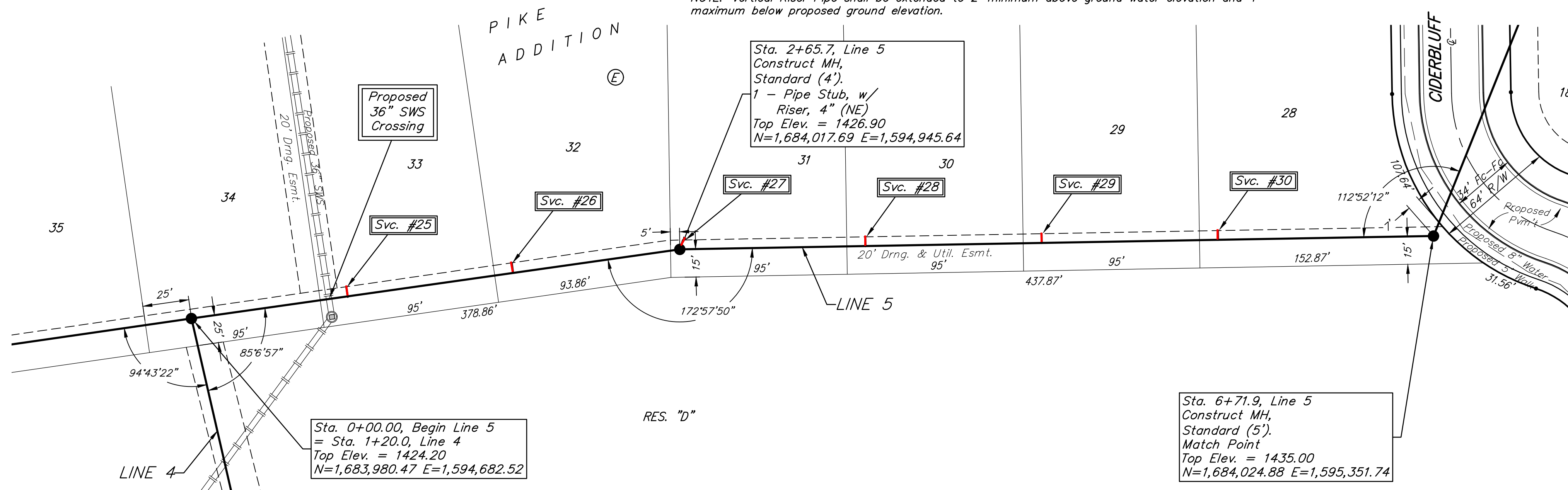
SEWER SERVICE TABLE

Distance from Main to Riser (L/Lt.)	Distance from		NUMBER	TYPE	LOCATION			FOR INFORMATION ONLY		
	Upstream MH	Downstream MH			LOT NO.	BLOCK NO.	LINE NO.	STATION \ DIRECTION	APPROXIMATE LENGTH 4" PIPE	VERTICAL
5' Lt.	181'	85'	25	8" X 4" Tee W/Riser	33	E	5	0+85.0/Lt.	8.0'	5.0'
5' Lt.	91'	175'	26	8" X 4" Tee W/Riser	32	E	5	1+75.0/Lt.	9.0'	5.0'
5' Lt.	@ mh		27	4" Stub W/Riser	31	E	5	2+65.7/Lt.	9.5'	5.3'
5' Lt.	306'	100'	28	8" X 4" Tee W/Riser	30	E	5	3+65.7/Lt.	10.0'	5.0'
5' Lt.	211'	195'	29	8" X 4" Tee W/Riser	29	E	5	4+60.7/Lt.	10.5'	5.0'
5' Lt.	116'	290'	30	8" X 4" Tee W/Riser	28	E	5	5+55.7/Lt.	11.0'	5.0'

NOTE: Vertical Riser Pipe shall be extended to 2' minimum above ground water elevation and 4' maximum below proposed ground elevation.

**BENCHMARKS:**  
 BM #1: City of Wichita disc adjacent to fire hydrant at SW corner of Lot 134, Block E, Pike Addition.  
 Elev. = 1425.30 NAVD88

BM #2: City of Wichita disc adjacent to fire hydrant at SE corner of Lot 139, Block E, Pike Addition.  
 Elev. = 1425.59 NAVD88



**BAUGHMAN COMPANY**

315 Ellis St.  
 Wichita, KS 67211  
 316-262-7271  
 BaughmanCo.com

PIKE ADDITION  
 Phase 3

**LINE 5**

SANITARY SEWER  
 IMPROVEMENTS

PROJECT NUMBER:  
 20-11-E769

DESIGN: AEG DRAWN: TMS

DATE: July 19, 2021

SHEET **8** OF **22**

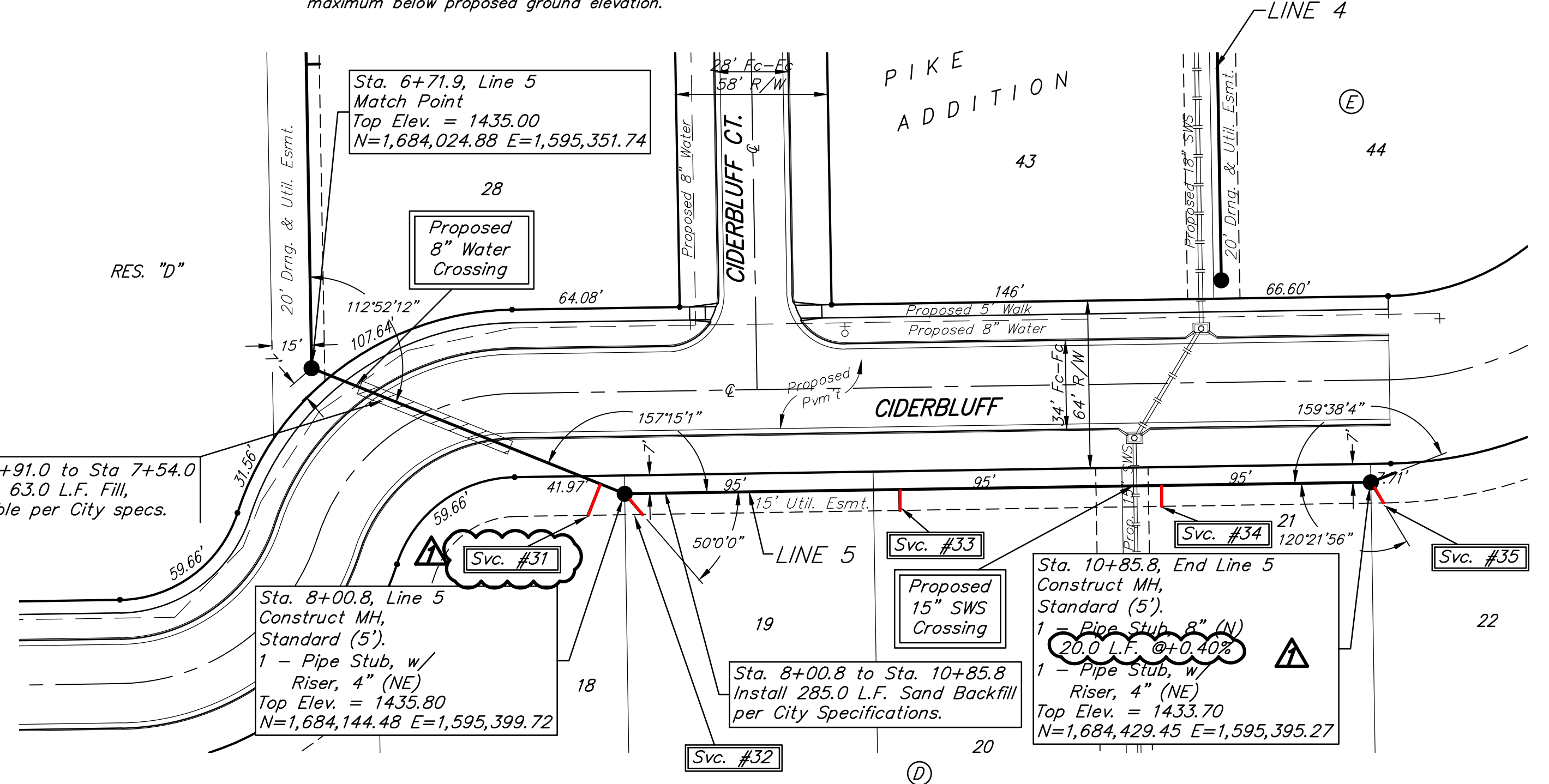
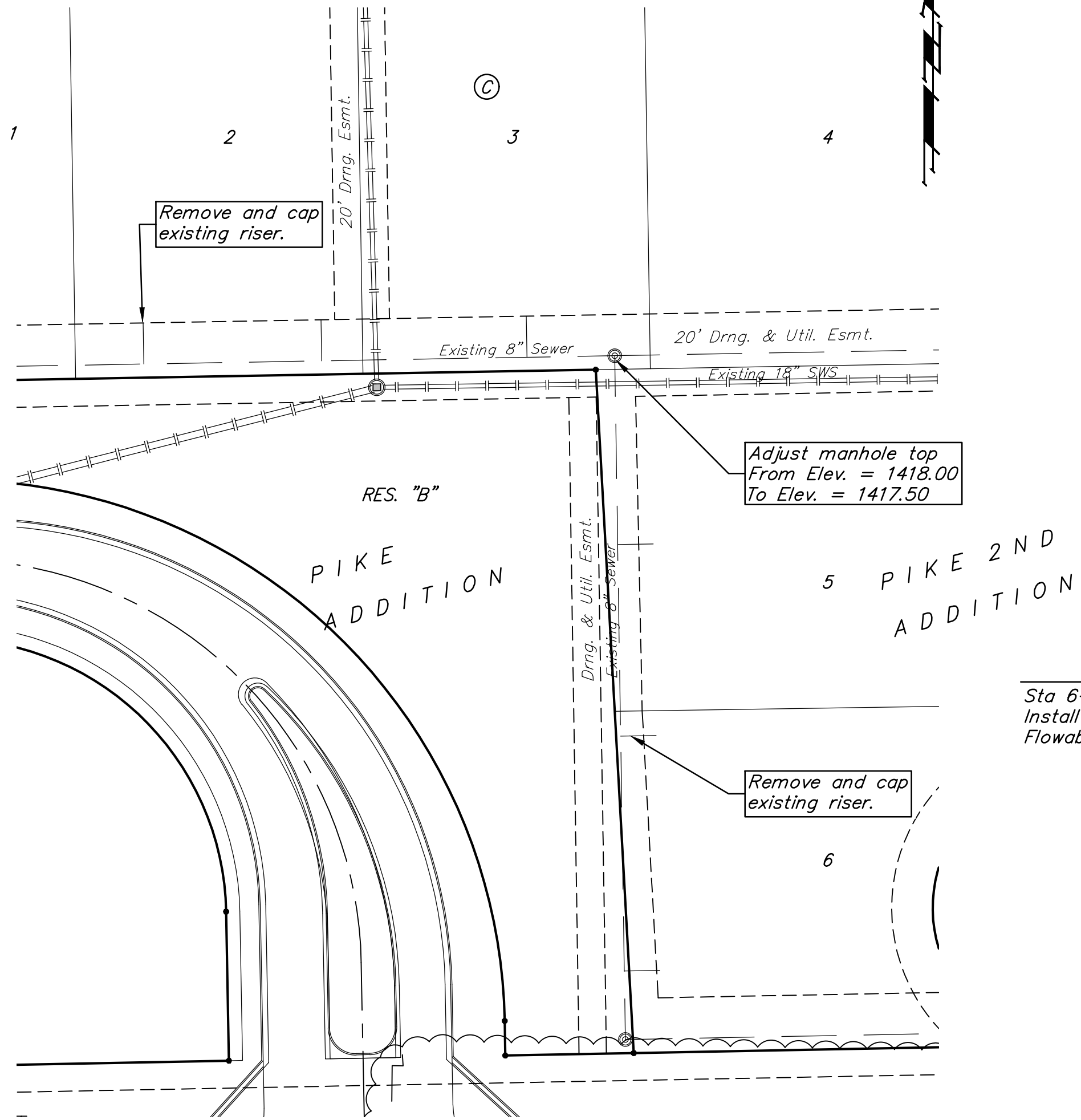
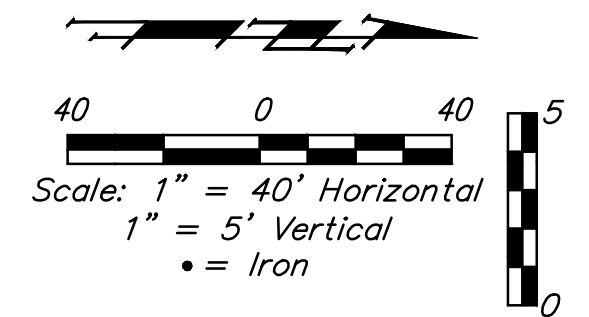
File: E:\Projects\Pike Addition\_Engineering\Phase 3\Sewer\Sewer.dwg

**BENCHMARKS:**  
 BM #1: City of Wichita disc adjacent to fire hydrant at SW corner of Lot 134, Block E, Pike Addition.  
 Elev. = 1425.30 NAVD88

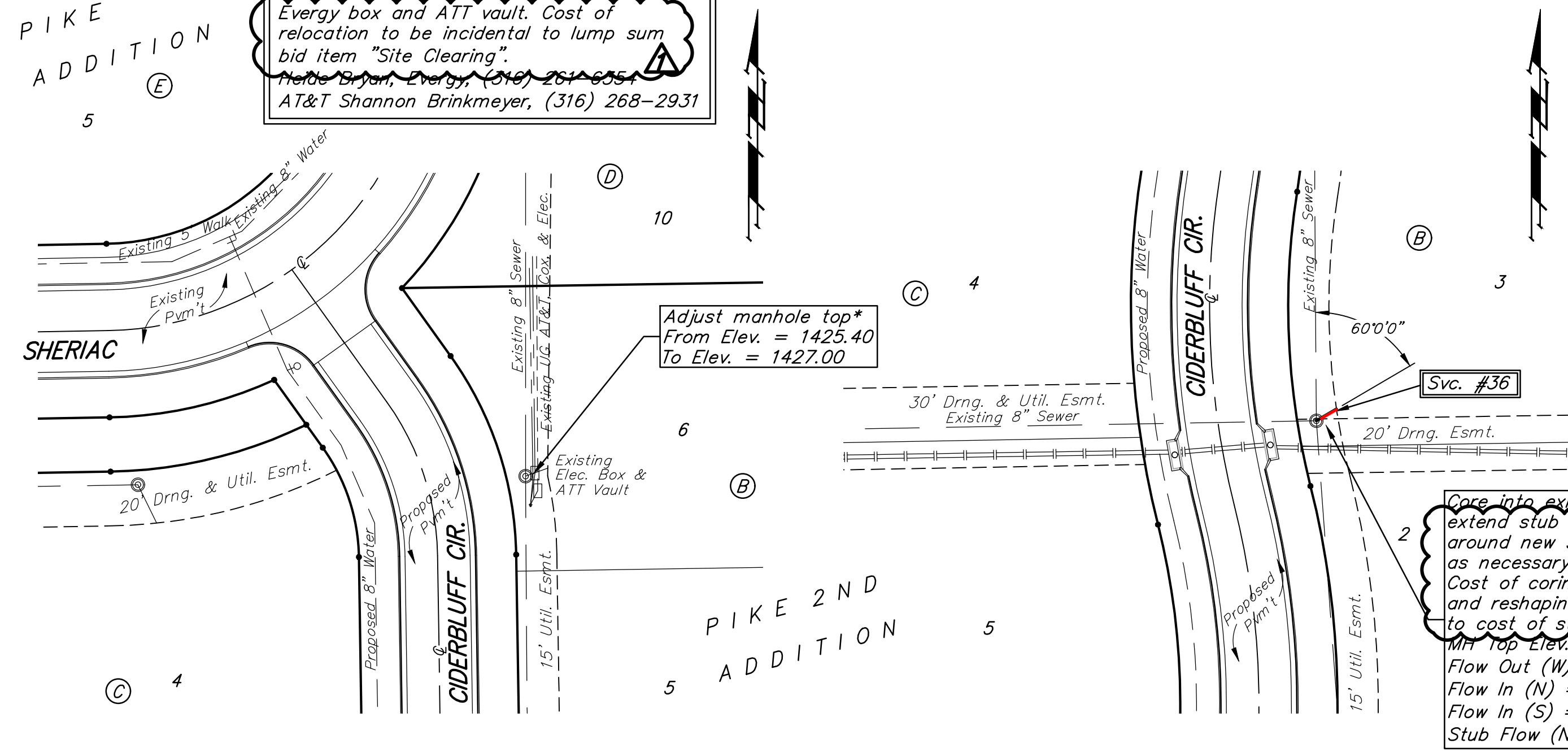
BM #2: City of Wichita disc adjacent to fire hydrant at SE corner of Lot 139, Block E, Pike Addition.  
 Elev. = 1425.59 NAVD88

Distance from Main to Riser (L/R)	Distance from		NUMBER	TYPE	LOCATION			FOR INFORMATION ONLY		
	Upstream MH	Downstream MH			LOT NO.	BLOCK NO.	LINE NO.	STATION \ DIRECTION	APPROXIMATE LENGTH 4" PIPE	VERTICAL
13' Rt.	10'	119'	31	8" X 4" Tee W/Riser	18	D	5	7+90.8/Rt.	16.0'	12.9'
11' Rt.	@ mh		32	4" Stub W/Riser	19	D	5	8+00.8/Rt.	16.0'	10.4'
8' Rt.	180'	105'	33	8" X 4" Tee W/Riser	20	D	5	9+05.8/Rt.	15.0'	8.0'
8' Rt.	80'	205'	34	8" X 4" Tee W/Riser	21	D	5	10+05.8/Rt.	13.5'	8.0'
9' Rt.	@ mh		35	4" Stub W/Riser	22	D	5	10+85.8/Rt.	12.5'	9.3'
			36	4" Stub	3	B	-	-	-	8.6'

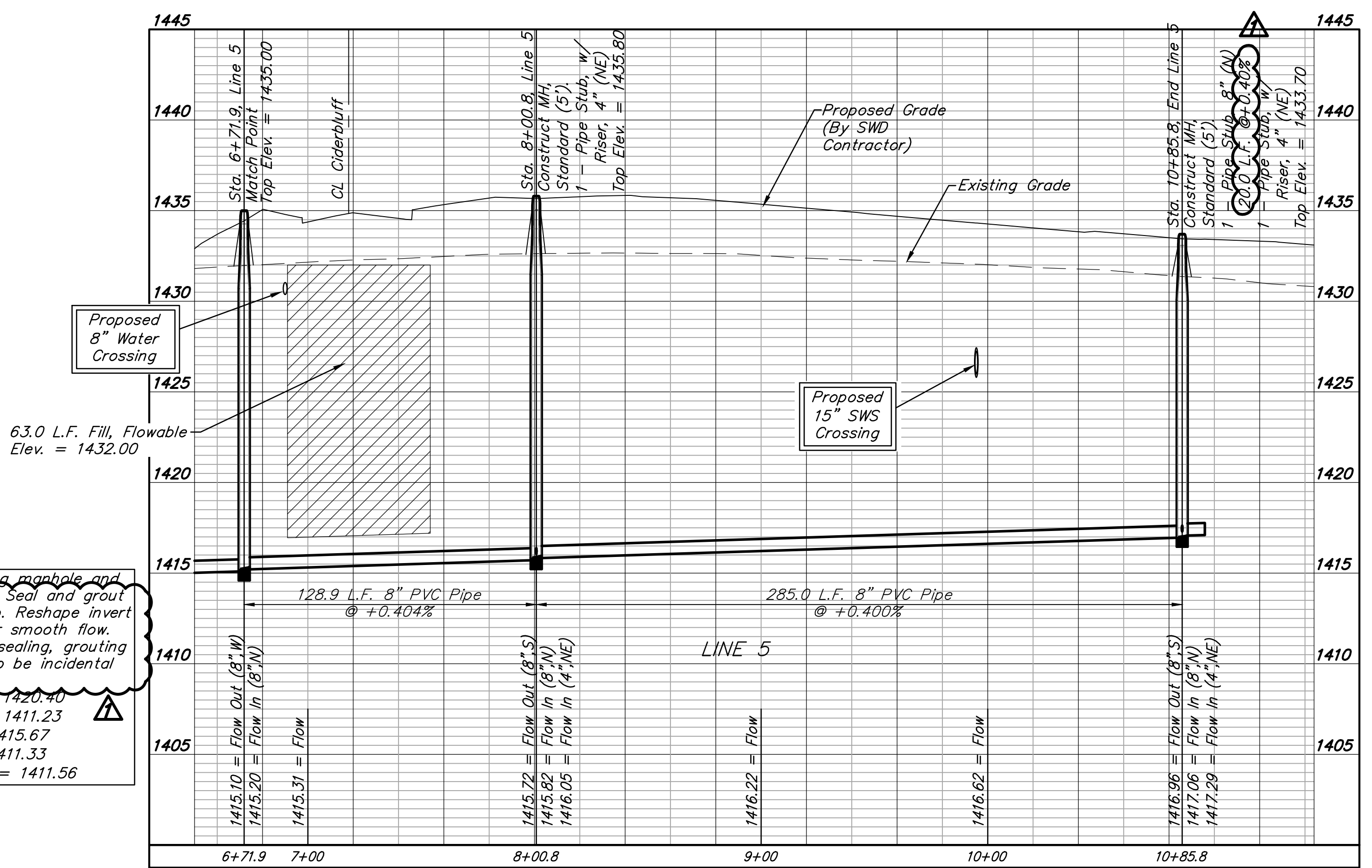
NOTE: Vertical Riser Pipe shall be extended to 2' minimum above ground water elevation and 4' maximum below proposed ground elevation.



\*Contact utility companies 3 weeks prior to construction to coordinate relocation of every box and ATT vault. Cost of relocation to be incidental to lump sum bid item "Site Clearing".  
 Notice to Proceed: 07/20/2021  
 AT&T Shannon Brinkmeyer, (316) 268-2931



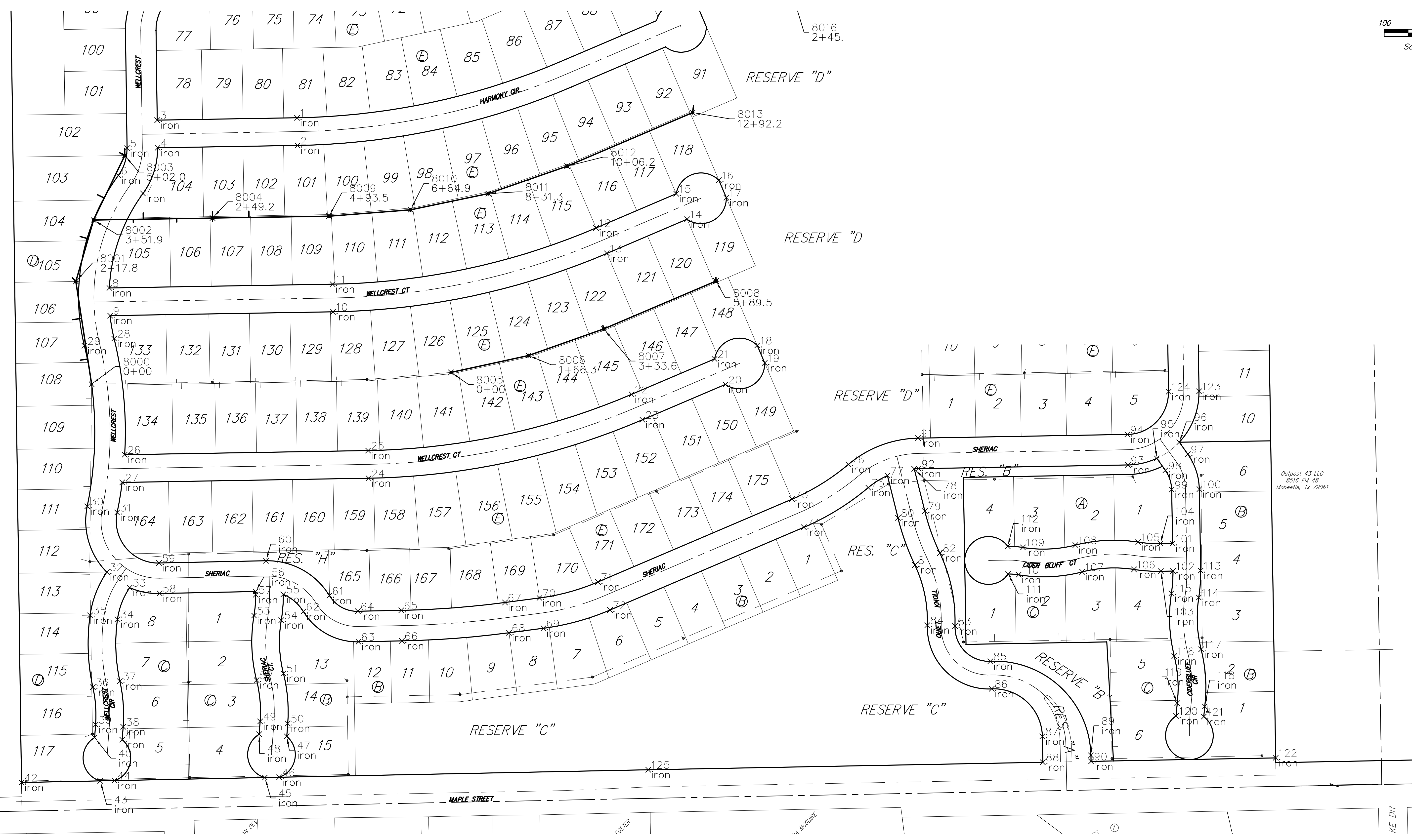
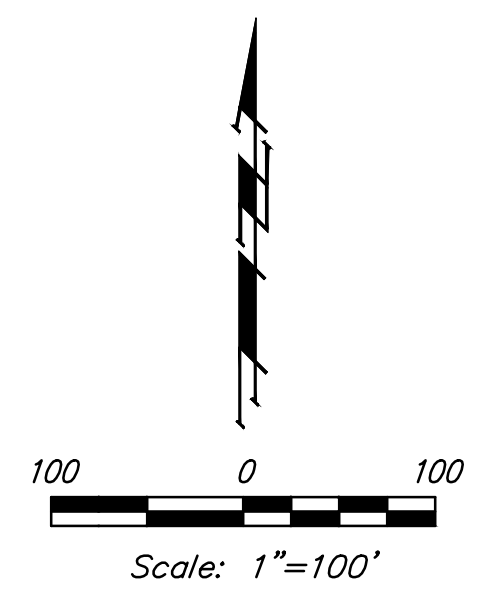
Core into existing manhole and extend stub NE. Seal and grout around new stub. Reshape invert as necessary for smooth flow. Cost of coring, sealing, grouting and reshaping to be incidental to cost of stub.  
 MH Top Elev. = 1420.40  
 Flow Out (W) = 1411.23  
 Flow In (N) = 1415.67  
 Flow In (S) = 1411.33  
 Stub Flow (NE) = 1411.56



**BAUGHMAN COMPANY**  
 315 Ellis St.  
 Wichita, KS 67211  
 316-262-7271  
 BaughmanCo.com

PIKE ADDITION  
 Phase 3  
**LINE 5**  
 SANITARY SEWER IMPROVEMENTS  
 PROJECT NUMBER:  
 20-11-E769  
 DESIGN: AEG DRAWN: TMS  
 DATE: July 20, 2021  
 SHEET 9 OF 22

File: E:\Projects\Pike Addition - Engineering\Phase 3\Sewer\Sewer Revised.dwg







**BAUGHMAN  
COMPANY**

315 Ellis St.  
Wichita, KS 67211  
316-262-7271  
BaughmanCo.com

PIKE ADDITION  
Phase 3

**COORDINATE  
SHEET**

SANITARY SEWER  
IMPROVEMENTS

PROJECT NUMBER:  
20-11-E769

DESIGN: DRAWN:  
DATE: May 13, 2021

SHEET  
**19** OF **22**

24, Inc  
 45 47 205

Outpost 43 LLC  
 8516 FM 48  
 Mobeetie, Tx 79061

File: E:\Projects\Pike Addition\_LeEngineering\Phase 3\Sewer\Sewer.dwg



IRONS

Point #	Northing	Easting	Raw Description
1	1683711.85	1593518.13	iron
2	1683653.86	1593519.12	iron
3	1683706.86	1593225.10	iron
4	1683648.86	1593225.89	iron
5	1683648.00	1593161.89	iron
6	1683591.00	1593143.70	iron
7	1683553.21	1593195.35	iron
8	1683355.10	1593124.88	iron
9	1683297.12	1593126.44	iron
10	1683305.08	1593593.53	iron
11	1683363.07	1593592.54	iron
12	1683480.89	1594144.83	iron
13	1683427.55	1594167.59	iron
14	1683499.19	1594335.49	iron
15	1683552.54	1594312.72	iron
16	1683580.94	1594402.20	iron
17	1683544.15	1594417.90	iron
18	1683234.69	1594482.54	iron
19	1683197.90	1594498.24	iron
20	1683152.94	1594415.83	iron
21	1683206.29	1594393.07	iron
22	1683132.11	1594219.24	iron
23	1683078.77	1594242.00	iron
24	1682956.29	1593667.94	iron
25	1683014.29	1593666.95	iron
26	1683005.60	1593157.02	iron
27	1682947.50	1593151.69	iron
28	1683249.03	1593134.79	iron
29	1683233.91	1593072.61	iron
30	1682897.39	1593078.51	iron

Point #	Northing	Easting	Raw Description
31	1682884.46	1593141.19	iron
32	1682759.59	1593119.52	iron
33	1682726.99	1593167.49	iron
34	1682660.76	1593141.92	iron
35	1682668.85	1593084.49	iron
36	1682518.25	1593090.31	iron
37	1682530.75	1593146.94	iron
38	1682435.36	1593153.75	iron
39	1682439.70	1593095.91	iron
40	1682412.62	1593093.88	iron
41	1682408.28	1593151.72	iron
42	1682318.49	1592940.64	iron
43	1682321.84	1593105.73	iron
44	1682322.45	1593135.72	iron
45	1682328.84	1593450.66	iron
46	1682329.45	1593480.66	iron
47	1682415.28	1593496.66	iron
48	1682419.61	1593438.82	iron
49	1682446.55	1593440.84	iron
50	1682442.21	1593498.68	iron
51	1682547.26	1593489.61	iron
52	1682533.08	1593433.37	iron
53	1682668.46	1593428.00	iron
54	1682658.78	1593485.18	iron
55	1682712.78	1593489.36	iron
56	1682718.79	1593431.27	iron
57	1682712.00	1593431.36	iron
58	1682714.72	1593230.46	iron
59	1682778.71	1593229.16	iron
60	1682783.25	1593453.08	iron

Point #	Northing	Easting	Raw Description
61	1682710.16	1593586.10	iron
62	1682676.95	1593531.39	iron
63	1682613.47	1593646.90	iron
64	1682677.46	1593645.61	iron
65	1682679.30	1593736.46	iron
66	1682615.31	1593737.76	iron
67	1682695.80	1593953.99	iron
68	1682632.35	1593962.36	iron
69	1682641.87	1594034.55	iron
70	1682705.32	1594026.18	iron
71	1682738.85	1594148.66	iron
72	1682679.99	1594173.78	iron
73	1682912.36	1594555.25	iron
74	1682853.49	1594580.37	iron
75	1682936.61	1594715.12	iron
76	1682985.48	1594673.79	iron
77	1682961.81	1594755.26	iron
78	1682975.90	1594811.53	iron
79	1682887.39	1594833.70	iron
80	1682873.30	1594777.44	iron
81	1682774.53	1594812.92	iron
82	1682799.45	1594865.29	iron
83	1682646.22	1594897.00	iron
84	1682648.31	1594839.04	iron
85	1682572.74	1594971.20	iron
86	1682514.80	1594973.86	iron
87	1682415.31	1595080.01	iron
88	1682360.83	1595081.04	iron
89	1682375.37	1595181.78	iron
90	1682362.74	1595182.02	iron

Point #	Northing	Easting	Raw Description
91	1683040.30	1594819.50	iron
92	1682976.31	1594820.64	iron
93	1682964.07	1595259.12	iron
94	1683048.06	1595257.99	iron
95	1682979.90	1595319.83	iron
96	1683031.71	1595366.96	iron
97	1683006.68	1595384.92	iron
98	1682972.87	1595337.79	iron
99	1682932.60	1595351.09	iron
100	1682933.50	1595409.08	iron
101	1682819.71	1595352.85	iron
102	1682761.71	1595353.75	iron
103	1682761.27	1595328.42	iron
104	1682819.26	1595327.40	iron
105	1682822.44	1595280.92	iron
106	1682765.13	1595272.00	iron
107	1682759.99	1595163.49	iron
108	1682816.19	1595149.19	iron
109	1682811.26	1595039.37	iron
110	1682753.99	1595030.17	iron
111	1682755.57	1595008.44	iron
112	1682813.56	1595007.58	iron
113	1682762.62	1595411.75	iron
114	1682706.20	1595407.76	iron
115	1682715.24	1595350.47	iron
116	1682583.50	1595356.44	iron
117	1682597.68	1595412.68	iron
118	1682477.87	1595420.31	iron
119	1682484.81	1595362.72	iron
120	1682458.15	1595360.22	iron

Point #	Northing	Easting	Raw Description
121	1682456.58	1595418.25	iron
122	1682370.09	1595568.89	iron
123	1683138.42	1595408.41	iron
124	1683137.42	1595344.42	iron
125	1682345.14	1594254.18	iron
126	1683886.69	1595441.22	iron
127	1683887.68	1595505.21	iron
128	1683952.64	1595504.20	iron
129	1683951.65	1595440.20	iron
130	1683996.58	1595406.96	iron
131	1684057.48	1595426.62	iron
132	1684102.41	1595392.37	iron
133	1684101.41	1595329.38	iron
134	1684436.05	1595324.16	iron
135	1684437.05	1595388.15	iron
136	1684223.48	1595327.48	iron
137	1684165.48	1595328.38	iron
138	1684163.74	1595229.61	iron
139	1684221.73	1595228.58	iron
140	1684211.94	1595130.76	iron
141	1684154.90	1595141.24	iron
142	1684157.00	1594895.37	iron
143	1684213.86	1594906.83	iron
144	1684201.54	1594723.31	iron
145	1684146.72	1594742.26	iron
146	1684176.52	1594650.96	iron
147	1684105.57	1594623.27	iron

SANITARY SEWER

Point #	Northing	Easting	Raw Description
8000	1683153.44	1593087.68	0+00
8001	1683368.74	1593054.61	2+17.8
8002	1683497.56	1593091.74	3+51.9
8003	1683632.64	1593157.10	5+02.0
8004	1683501.71	1593340.94	2+49.2
8005	1683178.10	1593840.63	0+00
8006	1683213.40	1594003.15	1+66.3
8007	1683269.19	1594160.85	3+33.6
8008	1683369.63	1594396.21	5+89.5
8009	1683505.66	1593585.22	4+93.5
8010	1683519.00	1593756.05	6+64.9
8011	1683552.86	1593918.95	8+31.3
8012	1683610.46	1594084.11	10+06.2
8013	1683722.70	1594347.14	12+92.2
8014	1683863.48	1594709.39	0+00
8015	1684223.48	1594682.52	1+20.0
8016	1683962.62	1594558.80	2+45.0
8017	1684140.36	1594481.51	4+38.9
8018	1684357.46	1594477.67	6+56.0
8019	1684363.96	1594845.61	10+24.0
8020	1684368.75	1595115.57	12+94.0
8021	1684372.34	1595318.15	14+96.6
8022	1684017.69	1594945.64	2+65.7
8023	1684024.88	1595351.74	6+71.9
8024	1684144.48	1595399.72	8+00.8
8025	1684429.45	1595395.27	10+85.8



**BAUGHMAN COMPANY**  
 315 Ellis St.  
 Wichita, KS 67211  
 316-262-7271  
 BaughmanCo.com

PIKE ADDITION  
 Phase 3

**COORDINATE SHEET**

SANITARY SEWER IMPROVEMENTS

PROJECT NUMBER:  
 20-11-E769

DESIGN: DRAWN:  
 DATE: July 20, 2021

SHEET OF  
**20 22**

File: E:\Projects\Pike Addition\_L\Engineering\Phase 3\Sewer\Sewer Revised.dwg