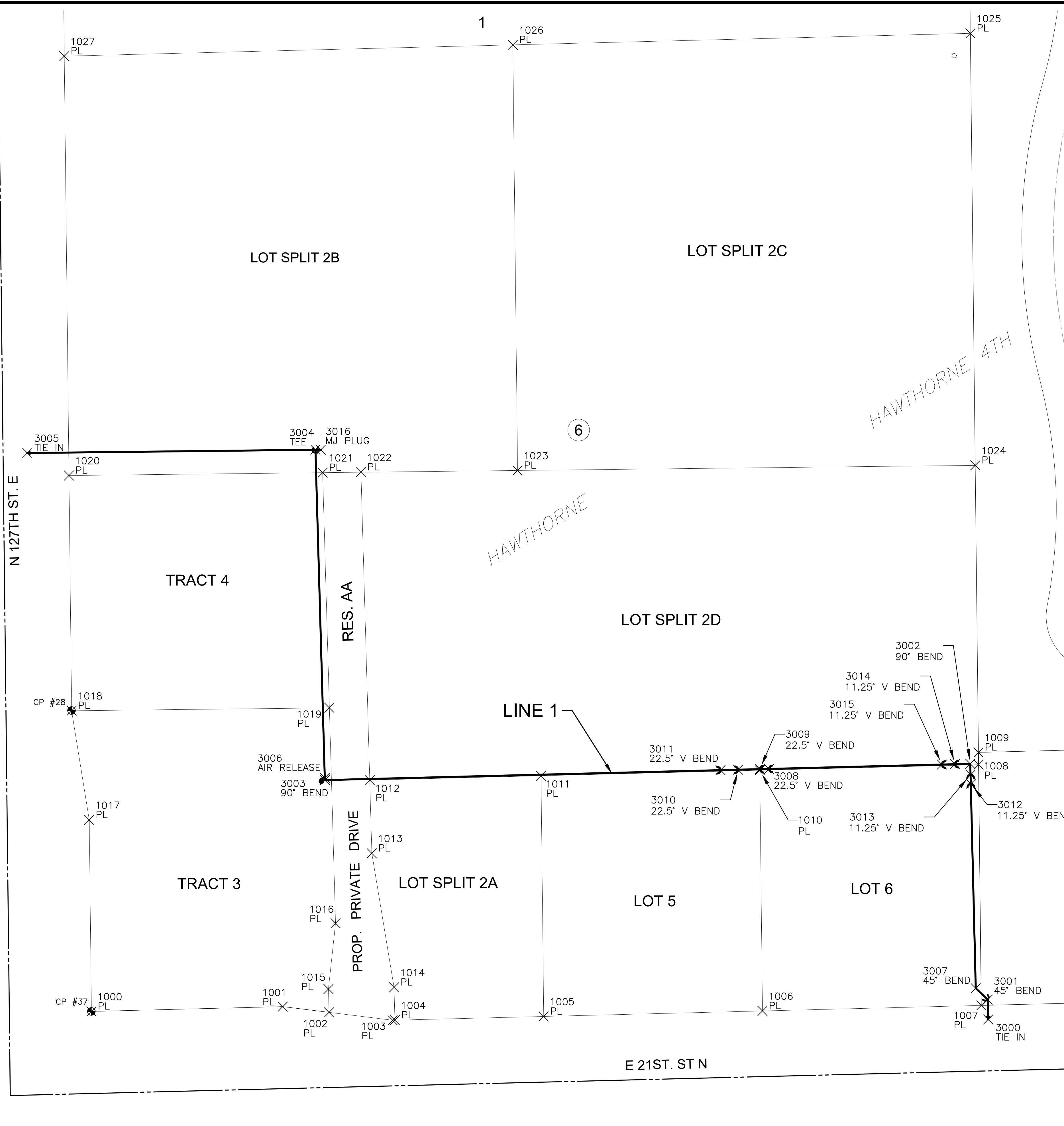


J:\PROJECTS\2022\220101016\_TWENTYFIRST\_HAWTHORNE\_DEVELOPMENT\00\_22016\_CAD\SHOTS\05\_CIVIL\WTR\22016-05-3500.DWG  
 PLOTTED: Friday, April 22, 2022 @ 04:15PM



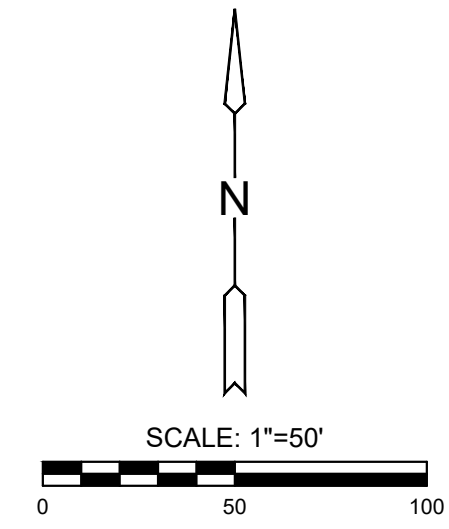
PLAT POINTS			
Point #	Northing	Easting	Desc.
1000	1699943.85	1691586.74	PL
1001	1699948.26	1691761.69	PL
1002	1699943.01	1691803.91	PL
1003	1699935.78	1691862.03	PL
1004	1699935.83	1691864.11	PL
1005	1699939.26	1692000.11	PL
1006	1699944.29	1692200.05	PL
1007	1699949.33	1692399.98	PL
1008	1700169.32	1692397.52	PL
1009	1700180.59	1692397.39	PL
1010	1700164.28	1692197.58	PL
1011	1700159.24	1691997.65	PL
1012	1700155.30	1691841.13	PL
1013	1700088.33	1691843.05	PL
1014	1699965.82	1691863.35	PL
1015	1699964.31	1691803.37	PL
1016	1700024.49	1691809.86	PL
1017	1700118.84	1691584.78	PL
1018	1700218.67	1691568.67	PL
1019	1700221.30	1691804.23	PL
1020	1700433.65	1691566.26	PL
1021	1700436.25	1691798.08	PL
1022	1700436.64	1691833.09	PL
1023	1700438.24	1691976.23	PL
1024	1700442.93	1692394.46	PL
1025	1700837.79	1692390.03	PL
1026	1700827.26	1691971.88	PL
1027	1700816.94	1691561.97	PL

WATER POINTS			
Point #	Northing	Easting	Desc.
3000	1699936.52	1692406.33	TIE IN
3001	1699954.62	1692405.89	45° BEND
3002	1700170.13	1692389.97	90° BEND
3003	1700155.27	1691800.12	90° BEND
3004	1700457.18	1691791.48	TEE
3005	1700454.23	1691528.19	TIE IN
3006	1700157.27	1691800.06	AIR RELEASE
3007	1699965.04	1692394.95	45° BEND
3008	1700165.49	1692206.03	22.5° V BEND
3009	1700165.28	1692197.69	22.5° V BEND
3010	1700164.78	1692177.70	22.5° V BEND
3011	1700164.38	1692161.70	22.5° V BEND
3012	1700151.84	1692390.41	11.25° V BEND
3013	1700160.13	1692390.21	11.25° V BEND
3014	1700169.77	1692375.97	11.25° V BEND
3015	1700169.47	1692364.08	11.25° V BEND
3016	1700457.23	1691796.48	MJ PLUG



**CONTROL POINTS**

CP 37  
 N: 1699943.851 E: 1691586.743 ELEV.=1384.67  
 5/8" by 24" Rebar with MKEC CLS39 cap  
  
 CP 28  
 N: 1700218.885 E: 1691568.632 ELEV.=1383.42  
 5/8" by 24" Rebar



EVERY ATTEMPT HAS BEEN MADE TO INSURE ALL COORDINATE VALUES SHOWN ARE AN ACCURATE AND TRUE REPRESENTATION OF THE CURRENT PLANS. ALL VALUES ARE TO BE CONFIRMED WITH THE FINAL SIGNED PLAN SET BEFORE USE.



PUBLIC WATER DISTRIBUTION PLANS FOR  
**HAWTHORNE ADDITION**  
 WICHITA, KANSAS

©2022  
 MKEC Engineering  
 All Rights Reserved  
 www.mkec.com  
 These drawings and their contents, including, but not limited to, all concepts, designs, & ideas are the exclusive property of MKEC Engineering (MKEC), and may not be used or reproduced in any way without the express consent of MKEC.

**BUBBLE MAP**

PROJECT NO.	448-2022-006892	
DATE	04/25/2022	
SCALE	1"=40'	
DESIGNED	DRAWN	CHECKED
LM	C-JL	SPE
NO.	REVISION	DATE