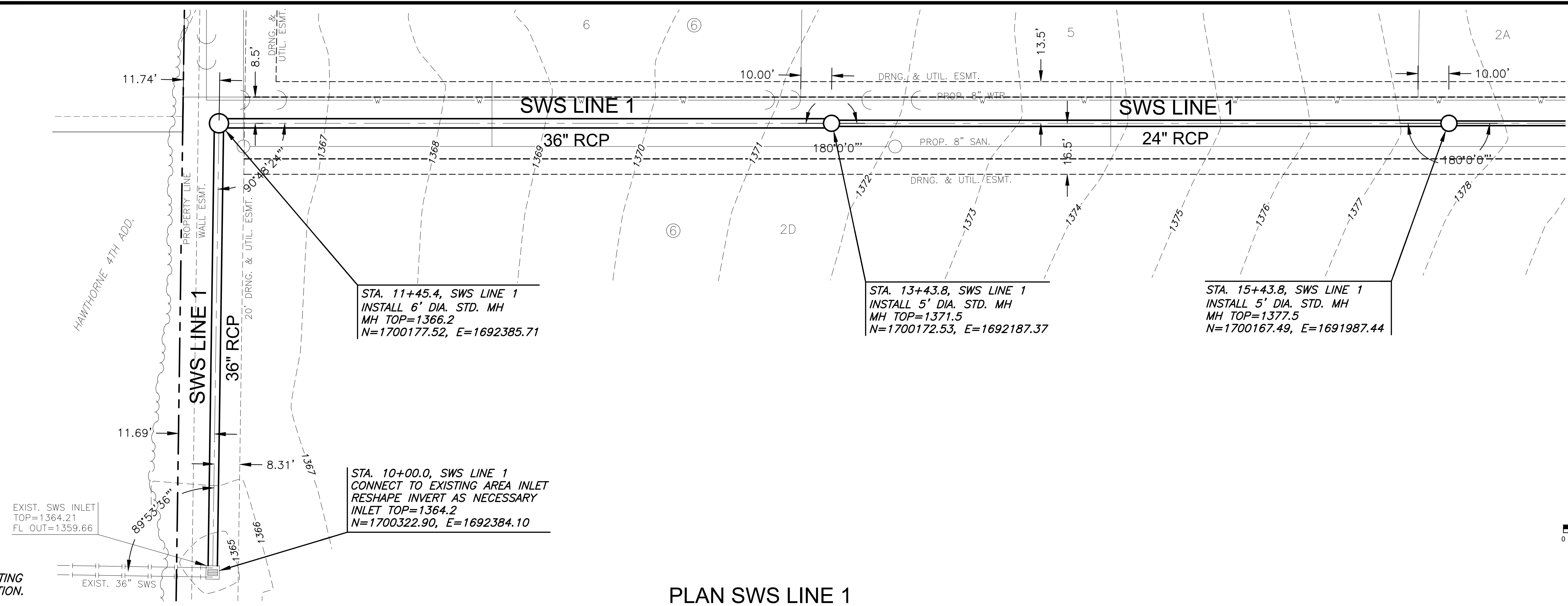


PLOTTED: Friday, April 22, 2022 @ 04:30PM



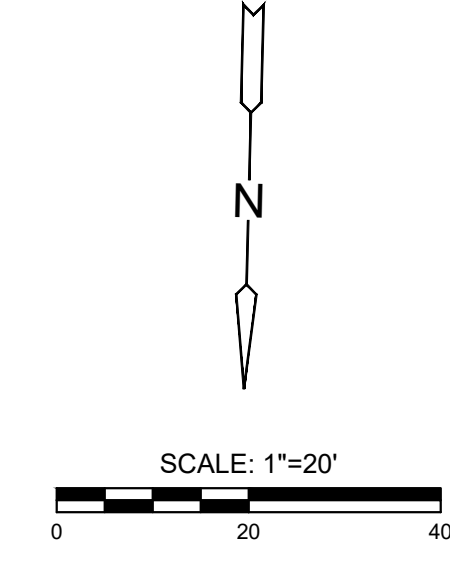
EXIST. SWS INLET  
TOP=1364.21  
FL\_OUT=1359.66

STA. 11+45.4, SWS LINE 1  
INSTALL 6" DIA. STD. MH  
MH TOP=1366.2  
N=1700177.52, E=1692385.71

STA. 13+43.8, SWS LINE 1  
INSTALL 5" DIA. STD. MH  
MH TOP=1371.5  
N=1700172.53, E=1692187.37

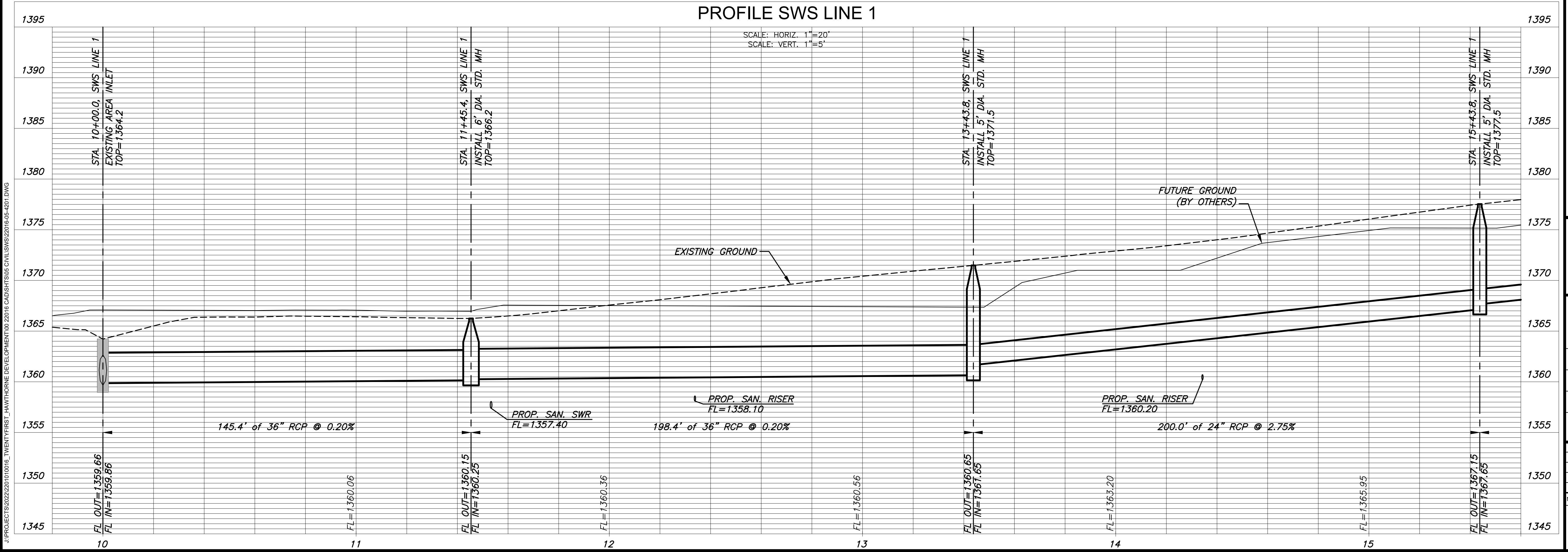
STA. 15+43.8, SWS LINE 1  
INSTALL 5" DIA. STD. MH  
MH TOP=1377.5  
N=1700167.49, E=1691987.44

STA. 10+00.0, SWS LINE 1  
CONNECT TO EXISTING AREA INLET  
RESHAPE INVERT AS NECESSARY  
INLET TOP=1364.2  
N=1700322.90, E=1692384.10



**NOTE:**  
CONTRACTOR TO VERIFY THE  
DEPTH AND LOCATION OF EXISTING  
UTILITIES PRIOR TO CONSTRUCTION.

**PLAN SWS LINE 1  
PROFILE SWS LINE 1**



SCALE: HORIZ. 1"=20'  
SCALE: VERT. 1"=5'

J:\PROJECTS\2022\201010016\_TWENTYFIRST\_HAWTHORNE\_DEVELOPMENT\00\_22016\_CAD\SH\TS\05\_CIVIL\SWS\22016-05-4201.DWG



PUBLIC STORM WATER SEWER PLANS FOR  
**HAWTHORNE ADDITION**  
WICHITA, KANSAS

©2022  
MKEC Engineering  
All Rights Reserved  
www.mkec.com  
These drawings and their contents, including, but not limited to, all concepts, designs, & ideas are the exclusive property of MKEC Engineering (MKEC), and may not be used or reproduced in any way without the express consent of MKEC.

**LINE 1 PLAN AND PROFILE**

PROJECT NO.	458-2022-085498	
DATE	03/25/2022	
SCALE	1"=20'	
DESIGNED	DRAWN	CHECKED
LM	C-JL	SPE

NO.	REVISION	DATE

SHEET NO.  
**04 OF 11**