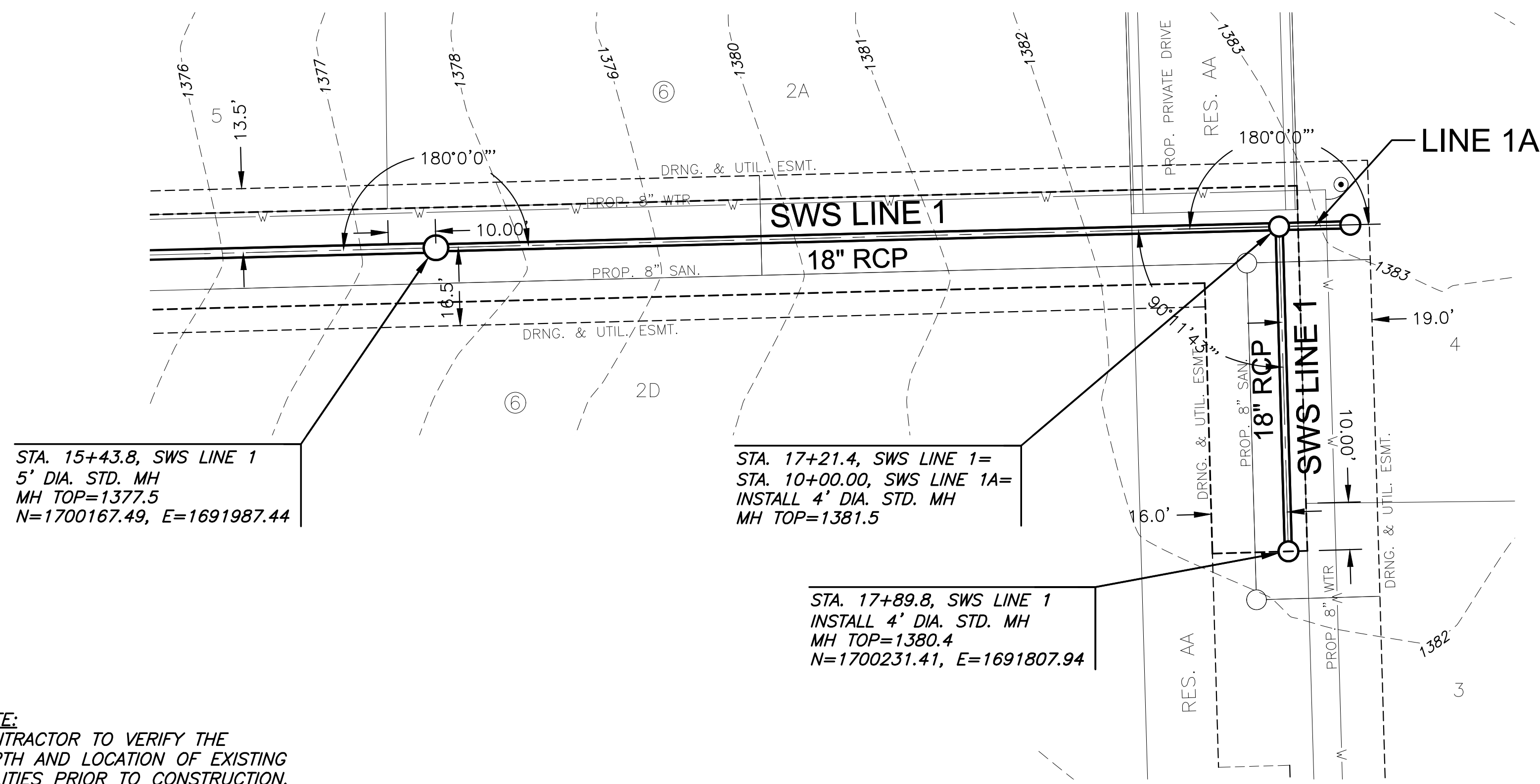


PLOTTED: Friday, April 22, 2022 @ 04:31PM

J:\PROJECTS\2022\20101016_TWENTYFIRST_HAWTHORNE DEVELOPMENT\00_22016 CAD\SHS\05 CIVIL\SW\22016-05-4200.DWG



STA. 15+43.8, SWS LINE 1
5' DIA. STD. MH
MH TOP=1377.5
N=1700167.49, E=1691987.44

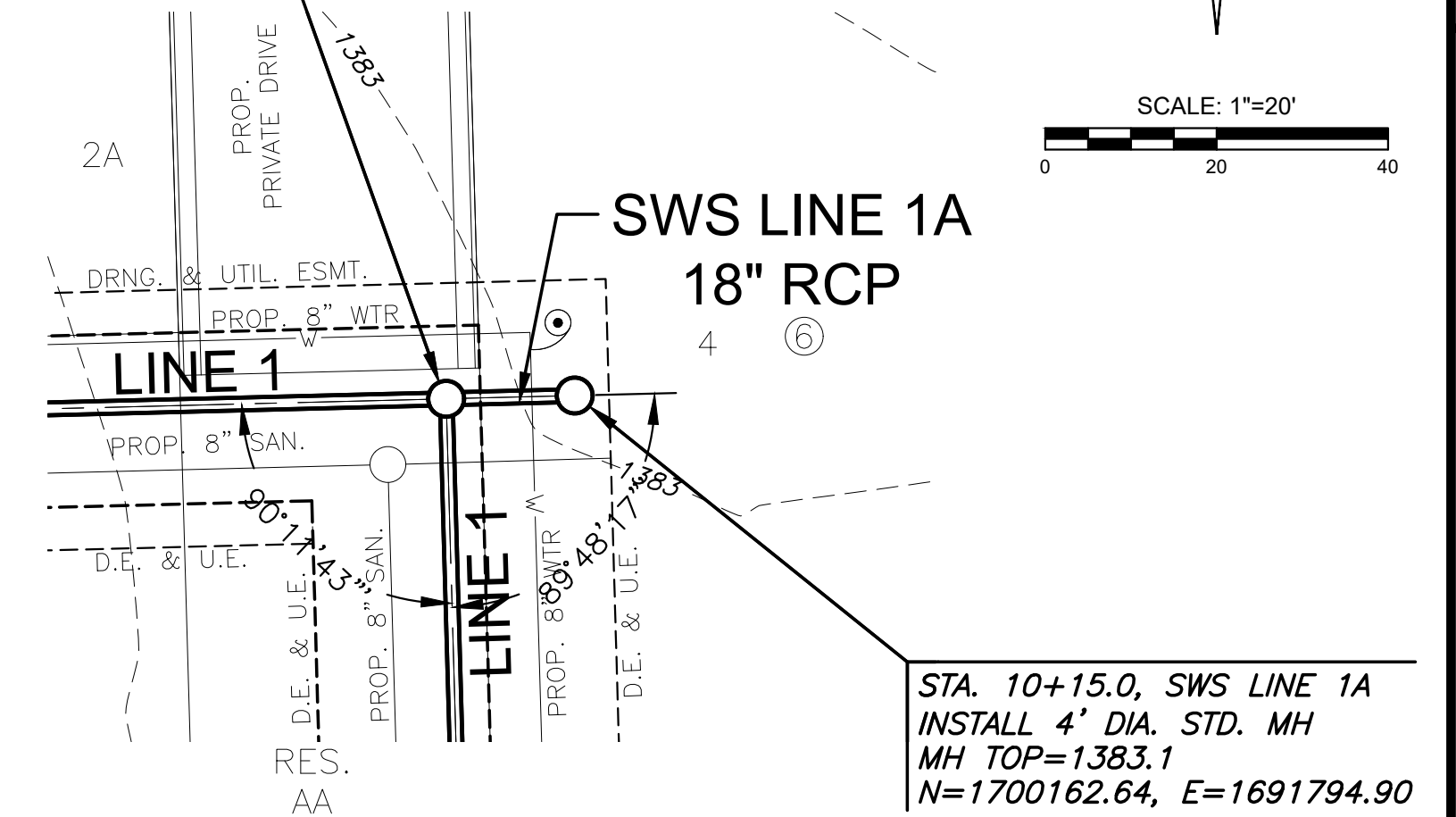
STA. 17+21.4, SWS LINE 1=
STA. 10+00.00, SWS LINE 1A=
INSTALL 4' DIA. STD. MH
MH TOP=1381.5

STA. 17+89.8, SWS LINE 1
INSTALL 4' DIA. STD. MH
MH TOP=1380.4
N=1700231.41, E=1691807.94

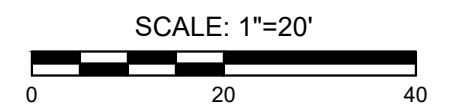
NOTE:
CONTRACTOR TO VERIFY THE
DEPTH AND LOCATION OF EXISTING
UTILITIES PRIOR TO CONSTRUCTION.



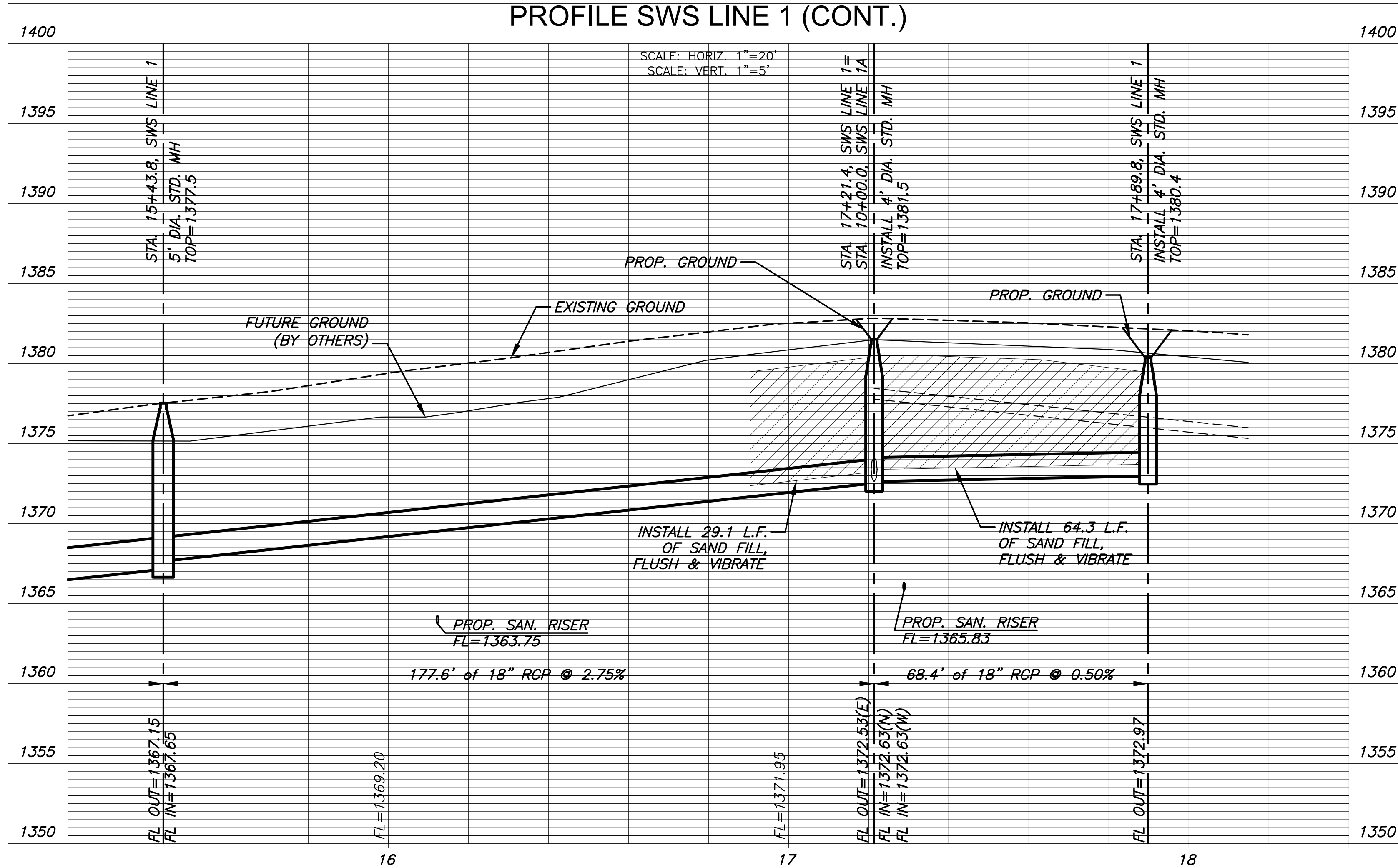
STA. 10+00.0, SWS LINE 1A=
STA. 17+21.38, SWS LINE 1=
4' DIA. STD. MH
MH TOP=1381.5
N=1700163.02, E=1691809.90



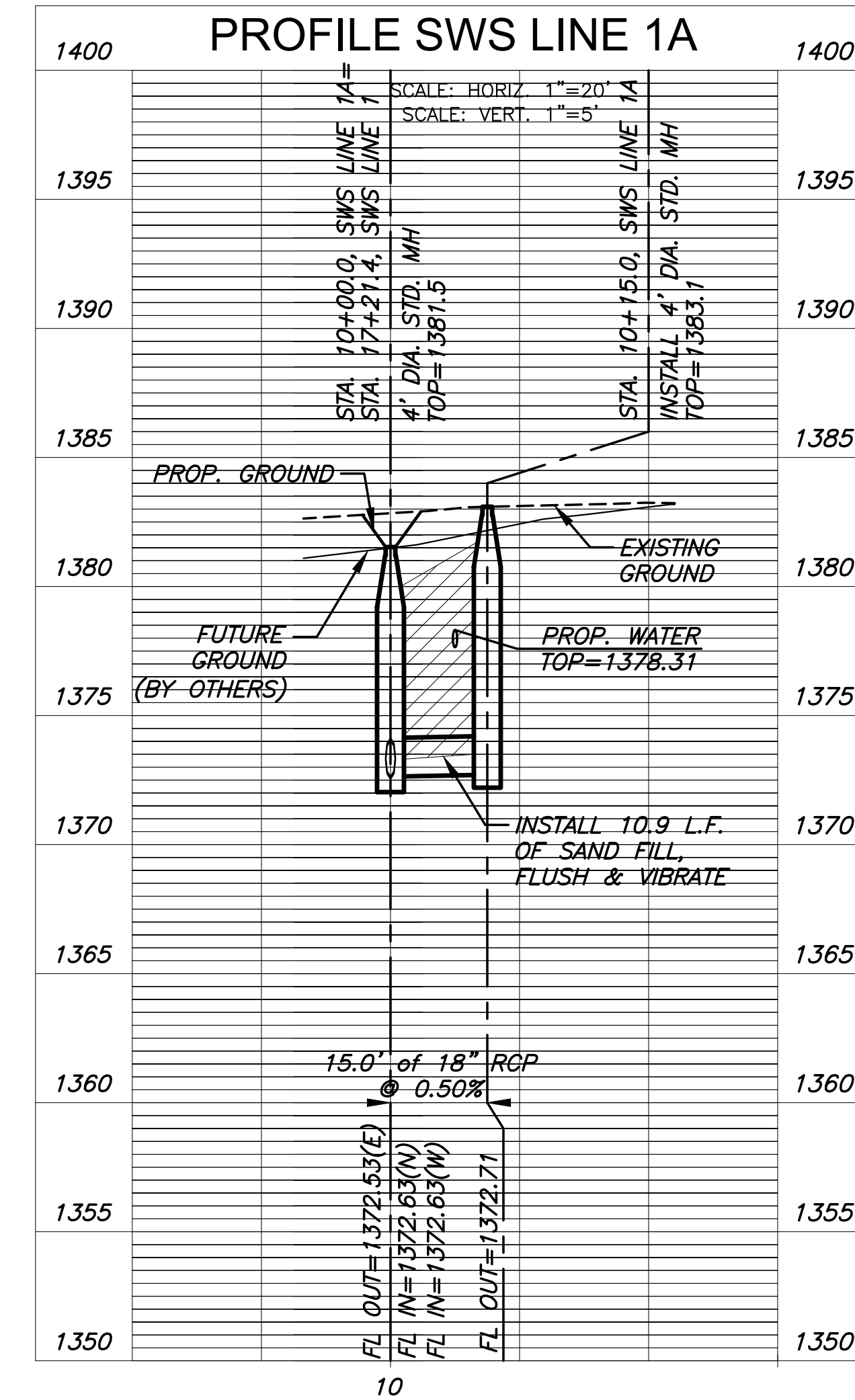
STA. 10+15.0, SWS LINE 1A
INSTALL 4' DIA. STD. MH
MH TOP=1383.1
N=1700162.64, E=1691794.90



PLAN SWS LINE 1 (CONT.)
PROFILE SWS LINE 1 (CONT.)



PLAN SWS LINE 1A
PROFILE SWS LINE 1A



PUBLIC STORM WATER SEWER PLANS FOR
HAWTHORNE ADDITION
WICHITA, KANSAS

©2022
MKEC Engineering
All Rights Reserved
www.mkec.com
These drawings and their contents,
including, but not limited to, all concepts,
designs, & ideas are the exclusive
property of MKEC Engineering (MKEC),
and may not be used or reproduced in any
way without the express consent of MKEC.

LINE 1 (CONT.) &
LINE 1A PLAN
AND PROFILE

PROJECT NO. 458-2022-085498

DATE 03/25/2022

SCALE 1"=20'

DESIGNED LM DRAWN C-JL CHECKED SPE

NO.	REVISION	DATE

SHEET NO.

05 OF 11