

PUBLIC STORM WATER SEWER PLANS FOR
HAWTHORNE ADDITION
WICHITA, KANSAS

©2022
MKEC Engineering
All Rights Reserved
www.mkec.com
These drawings and their contents, including, but not limited to, all concepts, designs, & ideas are the exclusive property of MKEC Engineering (MKEC), and may not be used or reproduced in any way without the express consent of MKEC.

BUBBLE MAP

PROJECT NO. 458-2022-085498

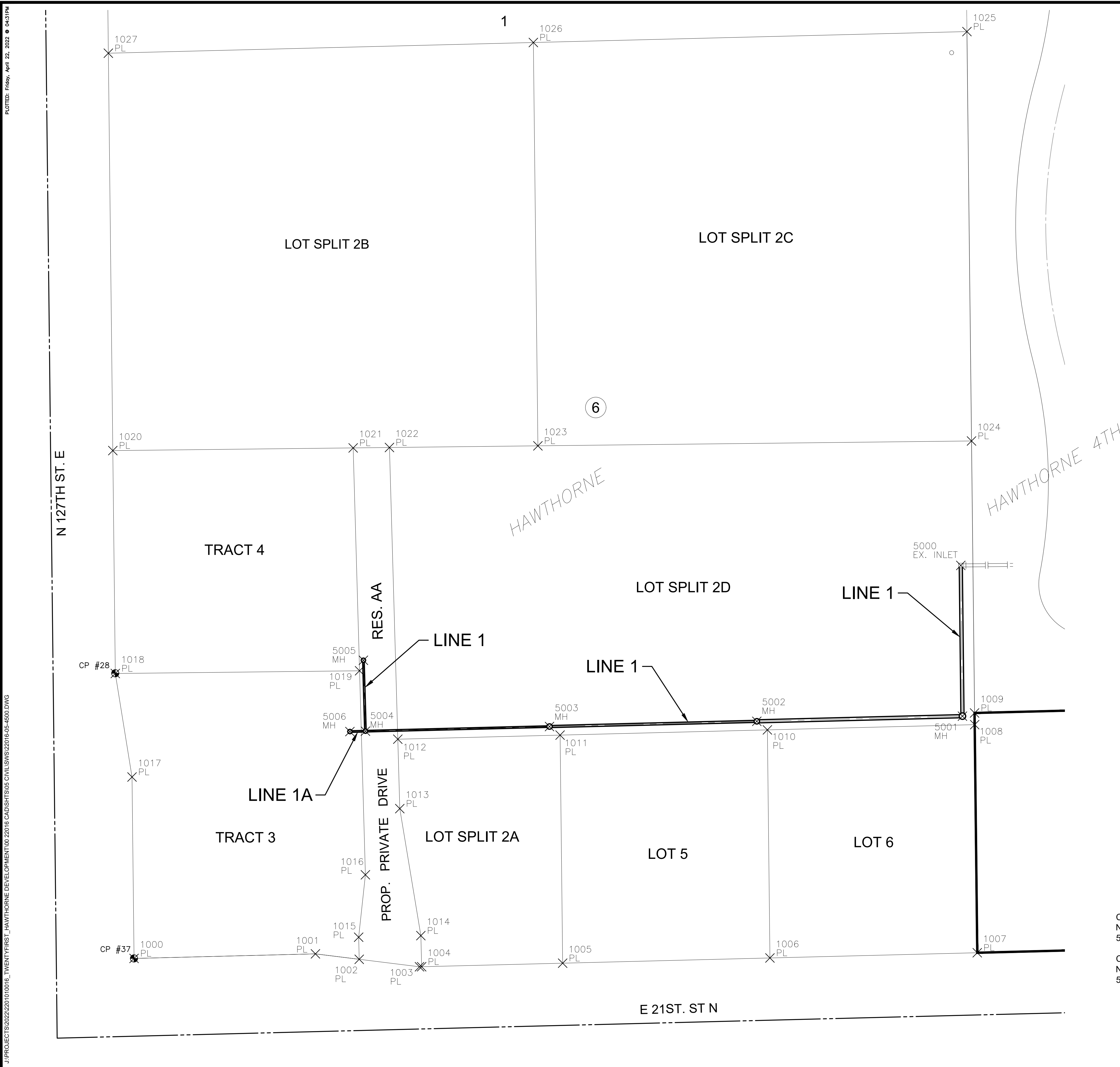
DATE 03/25/2022

SCALE 1"=20'

DESIGNED LM DRAWN C-JL CHECKED SPE

NO.	REVISION	DATE

SHEET NO.



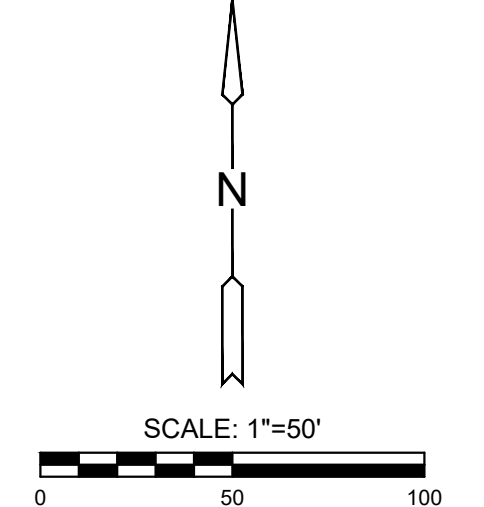
PLAT POINTS			
Point #	Northing	Easting	Desc.
1000	1699943.85	1691586.74	PL
1001	1699948.26	1691761.69	PL
1002	1699943.01	1691803.91	PL
1003	1699935.78	1691862.03	PL
1004	1699935.83	1691864.11	PL
1005	1699939.26	1692000.11	PL
1006	1699944.29	1692200.05	PL
1007	1699949.33	1692399.98	PL
1008	1700169.32	1692397.52	PL
1009	1700180.59	1692397.39	PL
1010	1700164.28	1692197.58	PL
1011	1700159.24	1691997.65	PL
1012	1700155.30	1691841.13	PL
1013	1700088.33	1691843.05	PL
1014	1699965.82	1691863.35	PL
1015	1699964.31	1691803.37	PL
1016	1700024.49	1691809.86	PL
1017	1700118.84	1691584.78	PL
1018	1700218.67	1691568.67	PL
1019	1700221.30	1691804.23	PL
1020	1700433.65	1691566.26	PL
1021	1700436.25	1691798.08	PL
1022	1700436.64	1691833.09	PL
1023	1700438.24	1691976.23	PL
1024	1700442.93	1692394.46	PL
1025	1700837.79	1692390.03	PL
1026	1700827.26	1691971.88	PL
1027	1700816.94	1691561.97	PL

STORM WATER SEWER POINTS			
Point #	Northing	Easting	Desc.
5000	1700322.90	1692384.10	EX. INLET
5001	1700177.52	1692385.71	MH
5002	1700172.53	1692187.37	MH
5003	1700167.49	1691987.44	MH
5004	1700163.02	1691809.90	MH
5005	1700231.41	1691807.94	MH
5006	1700162.64	1691794.90	MH

CONTROL POINTS

CP 37
N: 1699943.851 E: 1691586.743 ELEV.=1384.67
5/8" by 24" Rebar with MKEC CLS39 cap

CP 28
N: 1700218.885 E: 1691568.632 ELEV.=1383.42
5/8" by 24" Rebar



EVERY ATTEMPT HAS BEEN MADE TO INSURE ALL COORDINATE VALUES SHOWN ARE AN ACCURATE AND TRUE REPRESENTATION OF THE CURRENT PLANS. ALL VALUES ARE TO BE CONFIRMED WITH THE FINAL SIGNED PLAN SET BEFORE USE.

J:\PROJECTS\2022\20101016_TWENTYFIRST_HAWTHORNE DEVELOPMENT\00_22016 CAD\SHITS\05 CIVIL\SW\22016-05-4500.DWG
 PLOTTED: Friday, April 22, 2022 @ 04:31PM