

**GENERAL NOTES:**

# Sanitary Sewer Improvements to serve **OASIS ADDITION** CITY OF WICHITA, KANSAS

Gary Janzen, P.E. City Engineer  
Project Number: 468-2020-017103

Apex Excavating - Contractor  
K. Kerns - City of Wichita, Field Project Engineer  
E. Carillo - City of Wichita, Inspector  
As-built  
Stubs & Risers  
Release Date (for connection purposes only): 7/28/2021  
Completion Date:  
pdf: apr 4/1/2022

1. Contractor will be required to provide notice to utility companies a minimum of seventy-two (72) hours prior to any excavation, as follows:

- |   |                |
|---|----------------|
| Kansas One-Call   | 687-2470       |
| The Contractor must notify the following in case of an emergency: |                |
| Cox Communications  | 262-4270       |
| Kansas Gas Service  | 1-888-482-4950 |
| Westar Energy   | 383-8650       |
| Aquila Energy   | 1-800-303-0357 |
| AT&T  | 268-2245       |
| City of Wichita Water Dept.                                       | 268-4563       |
| City of Wichita Sewer Maint.                                      | 268-4024       |
| City of Wichita Storm Sewer Maint.                                | 268-4090       |
| City of Wichita Traffic Maint.                                    | 268-4034       |
| Conoco Phillips Pipeline Co.                                      | 1-877-267-2290 |
| Southern Star Pipeline Co.  | 529-6600       |
| Kinder-Morgan Pipeline Co.  | 1-888-844-5658 |

2. Utility service lines, poles, valve boxes, meters, and etcetera are to be adjusted as necessary by others prior to construction unless the plans specifically call for their adjustment by the Contractor or unless the plans specifically identify a utility to be adjusted by its owner during construction. Existing utilities and their location, as shown on the plans, represent the best information obtainable for design. The Contractor will be required to work around existing utilities within the right-of-way which do not conflict with proposed construction.

3. Rubble from the removal of miscellaneous structures and excess excavation which is to be wasted shall be disposed of on sites to be provided by the Contractor. These sites shall be approved by the Engineer as to suitability, appearance and site location. Locations, in the opinion of the Engineer, that will leave an unsightly appearance will not be approved. All disposal sites must be approved by the Kansas Department of Health and Environment. Material either stockpiled or disposed of in a flood plain would require a Kansas State Board of Agriculture permit. Any material dumped in waters of the United States or wetlands is subject to U.S. Corps. of Engineers permitting regulations. Any material buried or stockpiled beyond approved construction limits would require additional archaeological investigations unless buried in a previously approved borrow location.

4. Trees and shrubs in public right-of-way which are in direct conflict with proposed new construction shall be removed by the Contractor with the Engineer's approval. Trees and shrubs which are not in direct conflict with proposed new construction shall be saved and protected from damage.

5. The Contractor shall give all property owners and/or tenants of developed property abutting the construction of this project a minimum of ten (10) days notice prior to start of construction.

6. The Contractor shall be responsible for preserving property irons. The Contractor will be required to re-establish any property irons which are damaged or destroyed by his construction operations. Such irons shall be re-established by a licensed land surveyor in accordance with state laws.

7. All existing and proposed erosion control measures including silt fencing, erosion control mat, straw bales, inlet barriers, and const. entrance shall be maintained throughout construction by the contractor and until project is accepted by the City of Wichita. The on-site engineer shall complete weekly reports on the status of erosion control measures. The contractor shall be required to comply with maintenance and/or replacement of erosion control measures as determined by the on-site engineer until project is accepted by City of Wichita. Maintenance and/or replacement of erosion control measures to be paid by L.S. bid item "Maintain Existing BMP's."

8. All excess excavation shall be removed from the site. If the Contractor needs a location to waste excess excavation, it may be stockpiled at an approved location within Eagles Nest 2nd Addition located south of 45th St. N. on Maize Road.

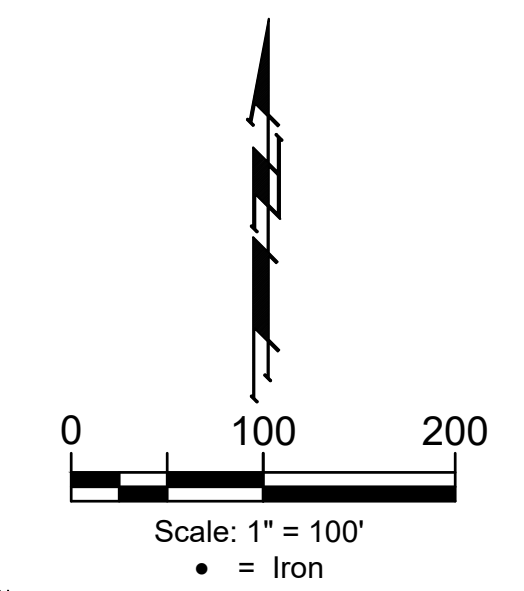
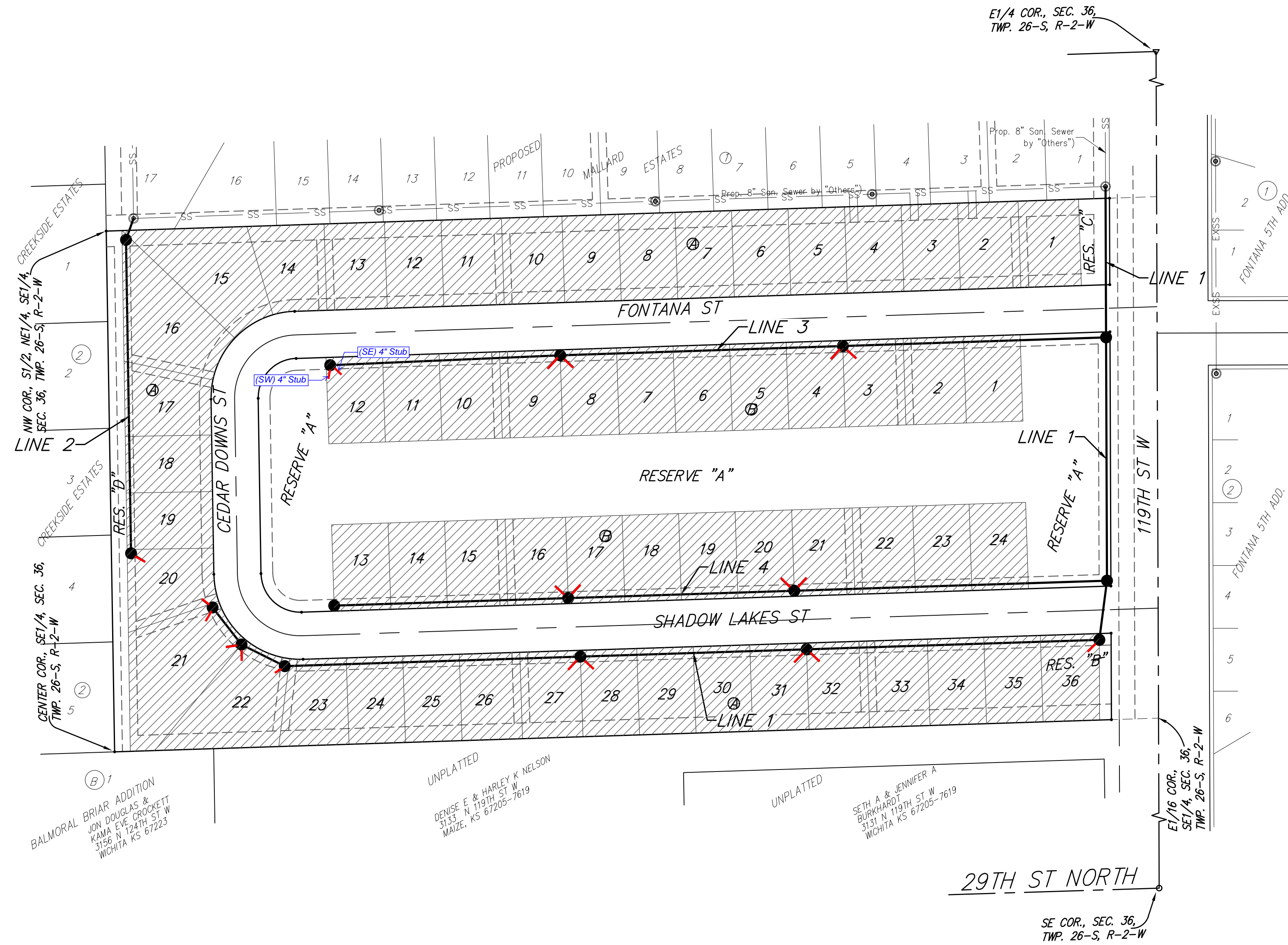
9. The Contractor shall be responsible for maintaining continuous flow of sewage through construction. Contractor's proposed method for maintaining sewage flow shall be approved by the Engineer. Cost of maintaining flow of sewage through construction will not be paid for directly and this cost shall be considered as subsidiary to the other pay items of work.

10. All areas disturbed during construction shall be seeded as follows (Temporary Seeding):

**Seed:** Rye grass (PLS)--5 lbs./1000 Sq. Ft.

All costs associated with seeding shall be included in bid item "Seeding". All seeding operations shall conform to City of Wichita Standard Specifications.

11. The Developer for this project is Paul Kelsey  
716 N. 119th St. #112, Wichita, KS 67212  
PH# (316)722-1077 email paul.kelsey@gmail.com



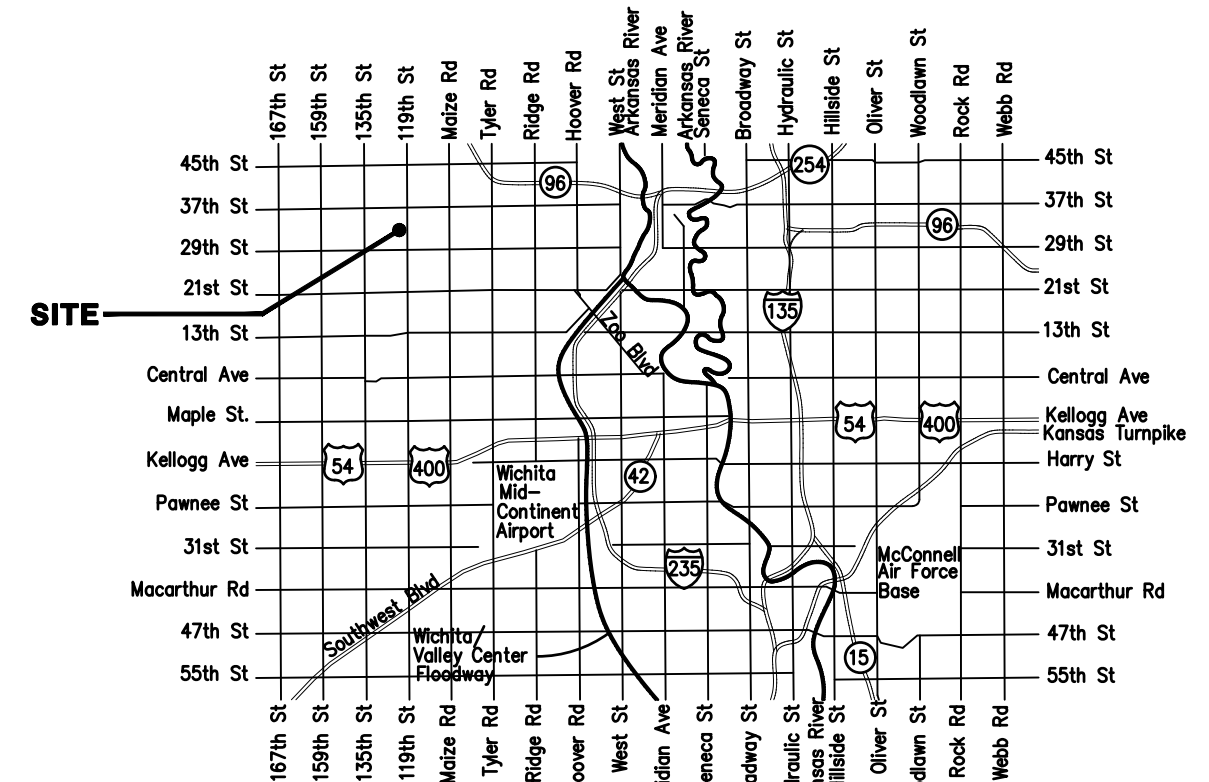
**SHEET INDEX**

Title Sheet	1
Line 1	2-4
Line 2	5
Line 3	6
Line 4	7
Erosion Control Plan	8
Erosion Control BMP Details	9-13
Standard Manhole Detail	14
Ring & Cover Detail	15
Vertical Riser Detail	16
Coordinate Sheet	17
Copy of Plat	18

**BENCHMARKS**

Railroad Spike In Northeast Face of Power Pole, 31.1' Southwest of #5 Rebar on 50' R/W South, 22'± West of Northwest Cor. of Asphalt Drive, 16.3' West & 16.7' South of Southeast Cor., Reserve "B", Oasis Addition.  
Elev. = 1359.87 NAVD88

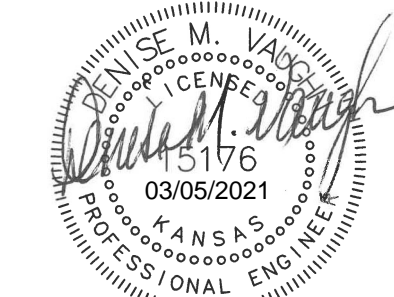
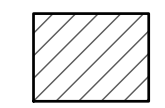
**BENCHMARK #2**  
Chiseled "crowfoot" on North Side of Concrete Slab on North Side of Fontana as Dedicated in Fontana 5th Between Concrete End Sections of Two Reinforced Concrete Pipes, 30.1' East to Northwest Cor. of Curved Masonry Wall Entry Monument on North Side of Said Fontana & 27.4' South to North Line of Back of Curb of Said Fontana Looking East.  
Elev. = 1359.80 NAVD88



**Vicinity Map**

Mar. 14, 2021

**BENEFIT DISTRICT**

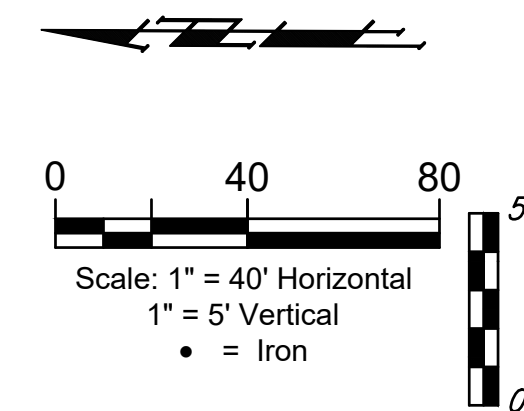
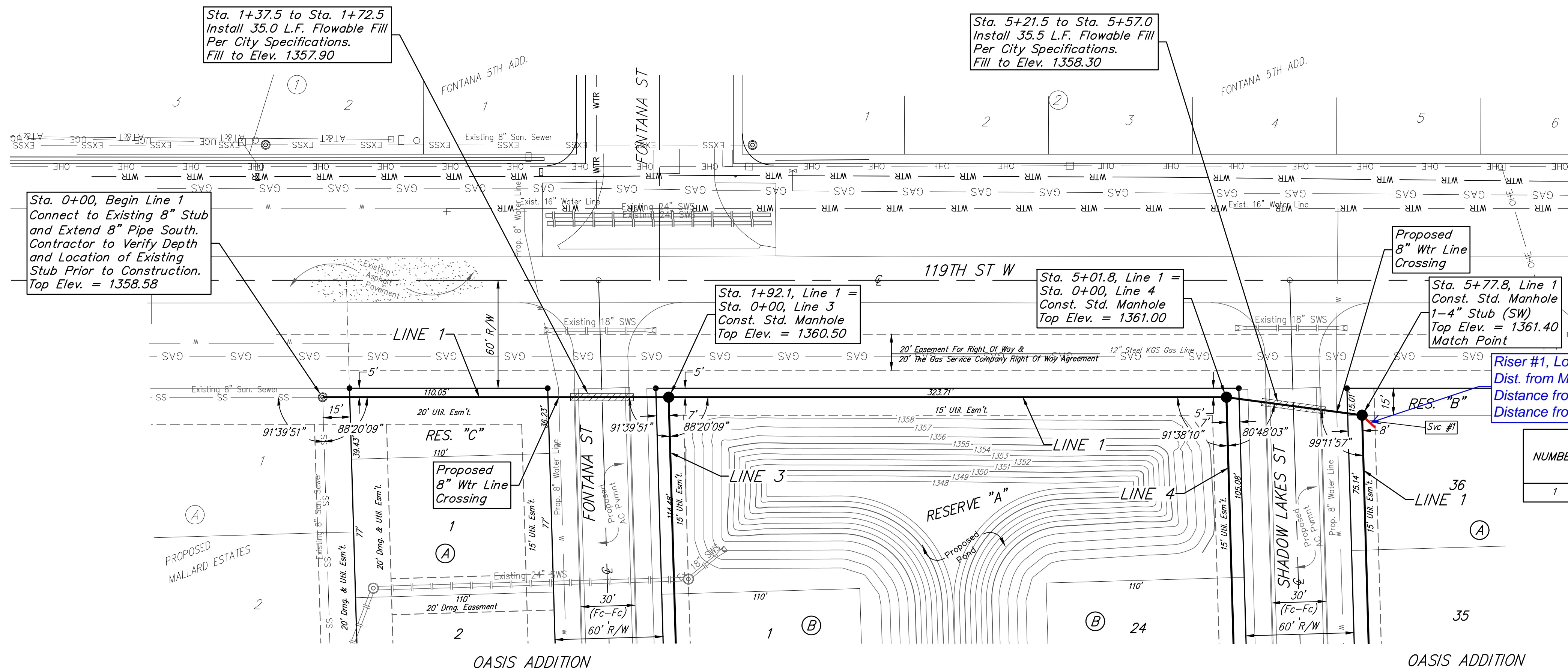


**BAUGHMAN COMPANY**  
315 Ellis St. Wichita, KS 67211 316-262-7271  
BaughmanCo.com



**BENCHMARK #1**  
 Railroad Spike In Northeast Face of Power Pole, 31.1' Southwest of #5 Rebar on 50' R/W South, 22'± West of Northwest Cor. of Asphalt Drive, 16.3' West & 16.7' South of Southeast Cor., Reserve "B", Oasis Addition.  
 Elev. = 1359.87 NAVD88

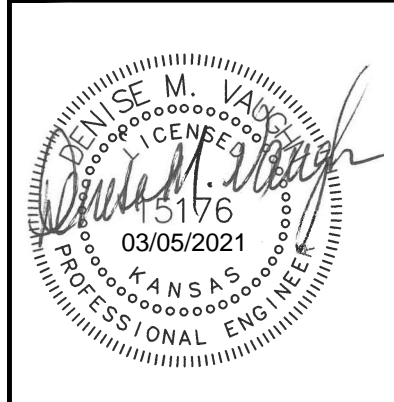
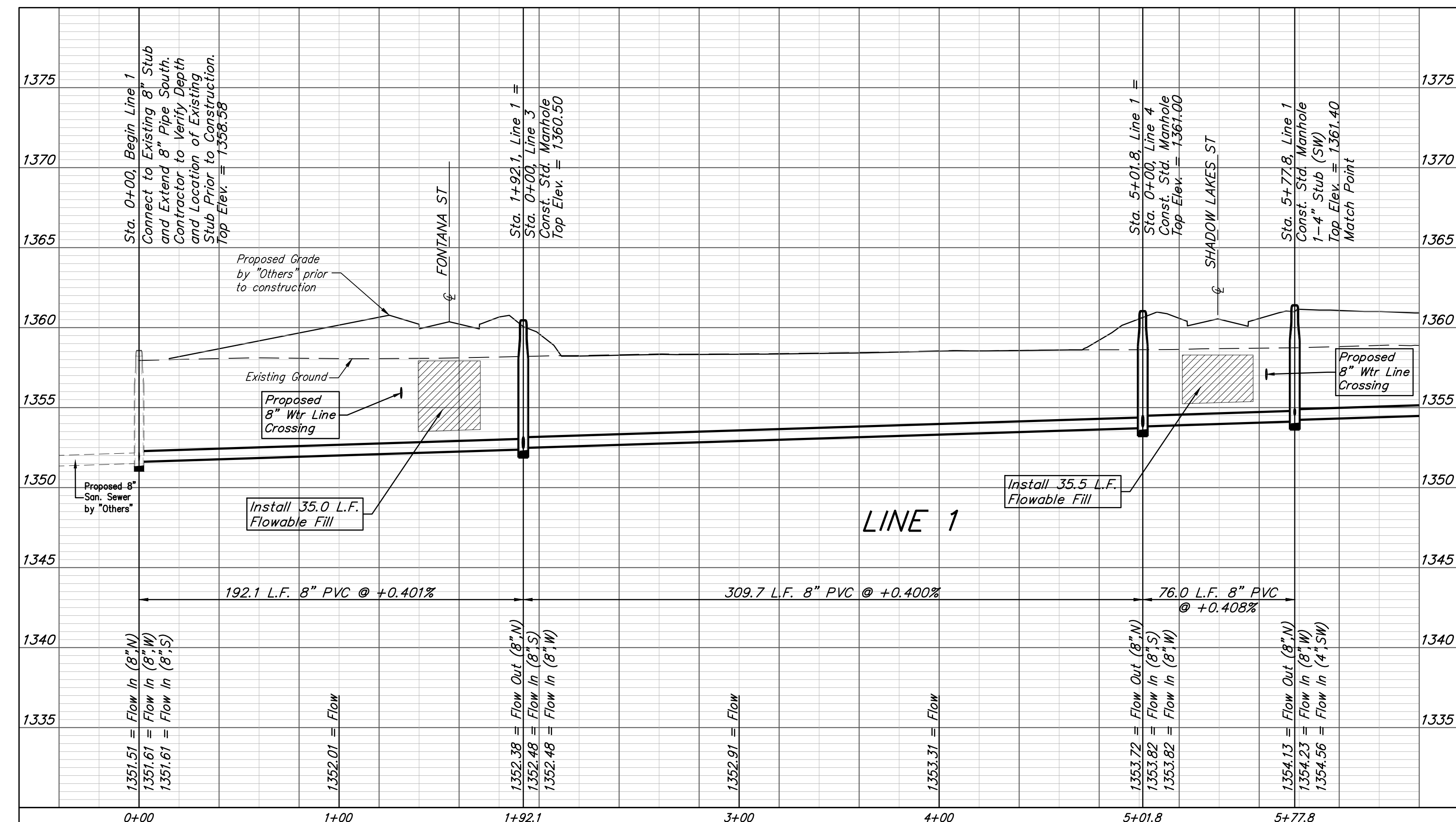
**BENCHMARK #2**  
 Chiseled "crowfoot" on North Side of Concrete Slab on North Side of Fontana as Dedicated in Fontana 5th Between Concrete End Sections of Two Reinforced Concrete Pipes, 30.1' East to Northwest Cor. of Curved Masonry Wall Entry Monument on North Side of Said Fontana & 27.4' South to North Line of Back of Curb of Said Fontana Looking East.  
 Elev. = 1359.80 NAVD88



Riser #1, Lot 36, Block A  
 Dist. from Main to MH: 10' Lt.  
 Distance fro USMH: @ mh  
 Distance from DSMH: @ mh

SEWER SERVICE TABLE

NUMBER	TYPE	LOCATION			FOR INFORMATION ONLY	
		LOT NO.	BLOCK NO.	LINE NO.	STATION/DIRECTION	APPROXIMATE LENGTH 4" PIPE
1	4" Stub	36	A	1	5+77.8/Lt.	VERTICAL: - HORIZONTAL: 10'



**BAUGHMAN COMPANY**  
 315 Ellis St.  
 Wichita, KS 67211  
 316-262-7271  
 BaughmanCo.com

Oasis Addition

**LINE 1**

SANITARY SEWER IMPROVEMENTS

PROJECT NUMBER: 468-2020-017103

DESIGN: DMV DRAWN: JAK

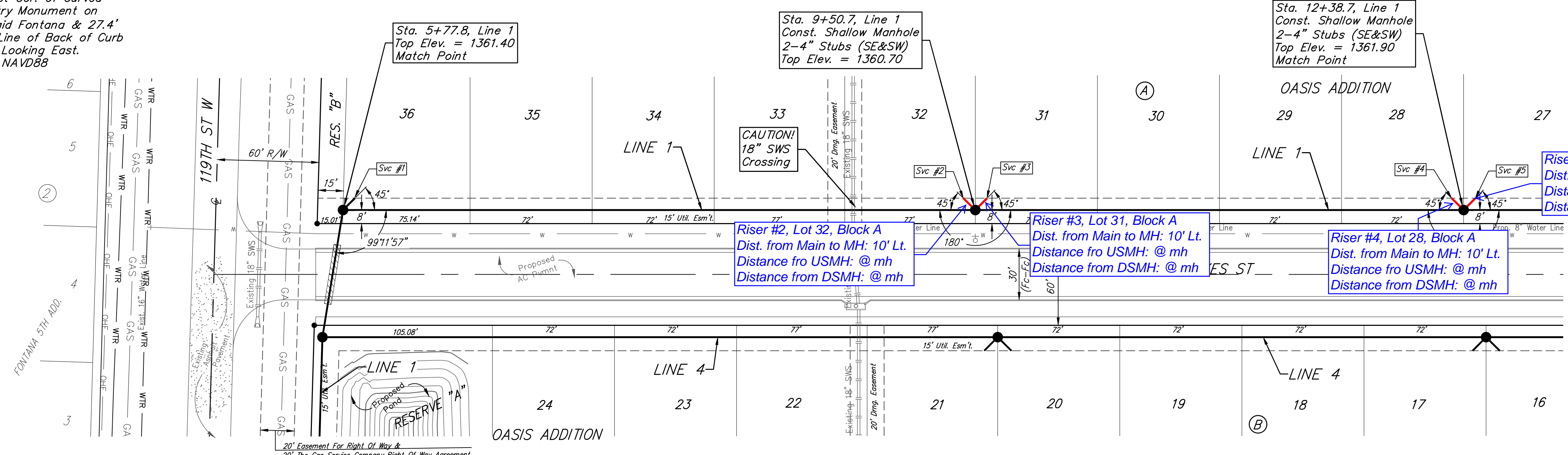
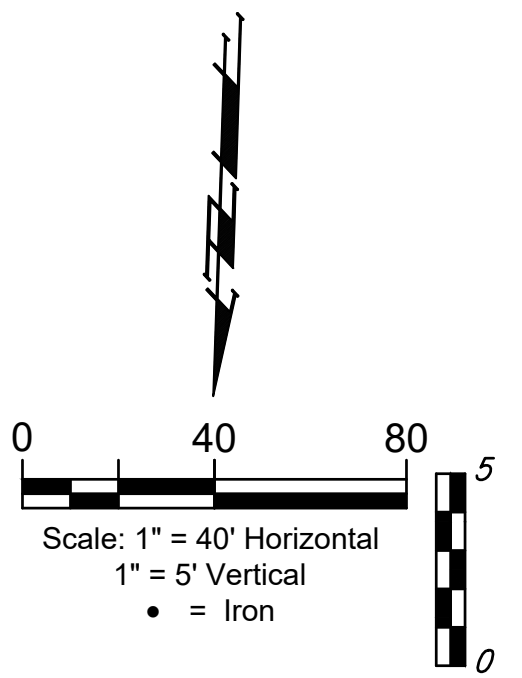
DATE: Mar. 11, 2021

SHEET OF 2 18

**BENCHMARK #1**  
 Railroad Spike In Northeast Face of Power Pole, 31.1' Southwest of #5 Rebar on 50' R/W South, 22± West of Northwest Cor. of Asphalt Drive, 16.3' West & 16.7' South of Southeast Cor., Reserve "B", Oasis Addition.  
 Elev. = 1359.87 NAVD88

**BENCHMARK #2**  
 Chiseled "crowfoot" on North Side of Concrete Slab on North Side of Fontana as Dedicated in Fontana 5th Between Concrete End Sections of Two Reinforced Concrete Pipes, 30.1' East to Northwest Cor. of Curved Masonry Wall Entry Monument on North Side of Said Fontana & 27.4' South to North Line of Back of Curb of Said Fontana Looking East.  
 Elev. = 1359.80 NAVD88

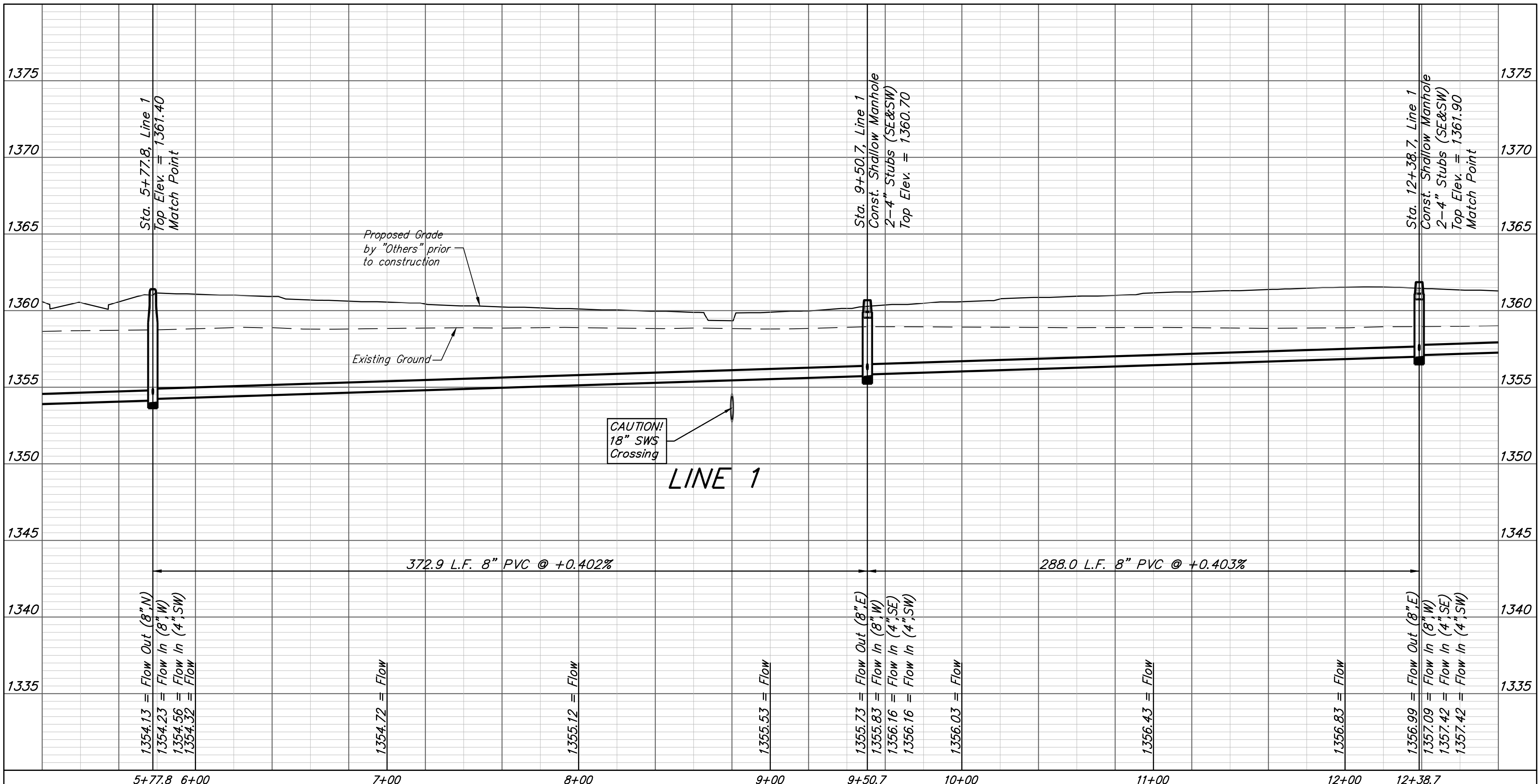
The Contractor shall be required to backfill trench with sand from Sta. 5+77.8 to Sta. 12+38.7, Line 1. To be bid as "L.F. Fill, Sand, Flushed & Vibrated"



**SEWER SERVICE TABLE**

NUMBER	TYPE	LOCATION				FOR INFORMATION ONLY	
		LOT NO.	BLOCK NO.	LINE NO.	STATION/DIRECTION	APPROXIMATE LENGTH 4" PIPE	
1	4" Stub	36	A	1	5+77.8/Lt.	-	10'
2	4" Stub	32	A	1	9+05.7/Lt.	-	10'
3	4" Stub	31	A	1	9+05.7/Lt.	-	10'
4	4" Stub	28	A	1	12+38.7/Lt.	-	10'
5	4" Stub	27	A	1	12+38.7/Lt.	-	10'

NOTE: When the vertical length is greater than zero, Vertical Riser Pipe shall be extended to 2' minimum above ground water elevation and 4' maximum below proposed ground elevation.



**B**

**BAUGHMAN COMPANY**

315 Ellis St.  
 Wichita, KS 67211  
 316-262-7271  
 BaughmanCo.com

Oasis Addition

LINE 1

SANITARY SEWER IMPROVEMENTS

PROJECT NUMBER:  
 468-2020-017103

DESIGN: DMV DRAWN: JAK

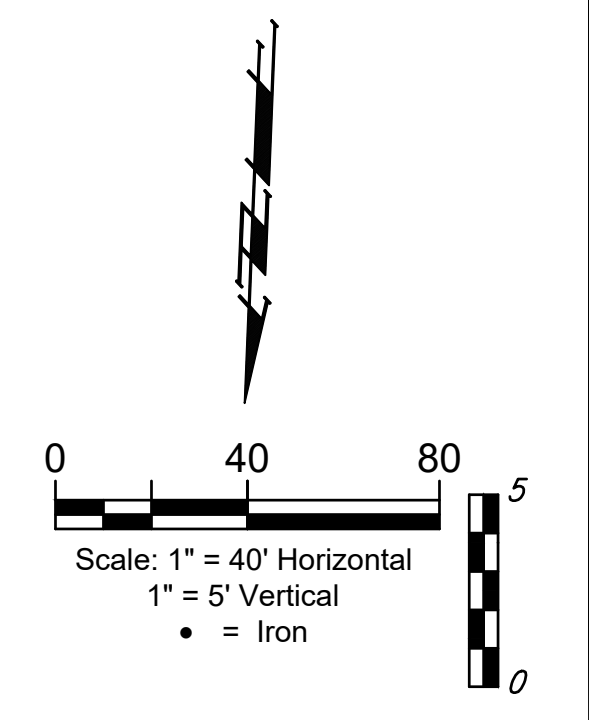
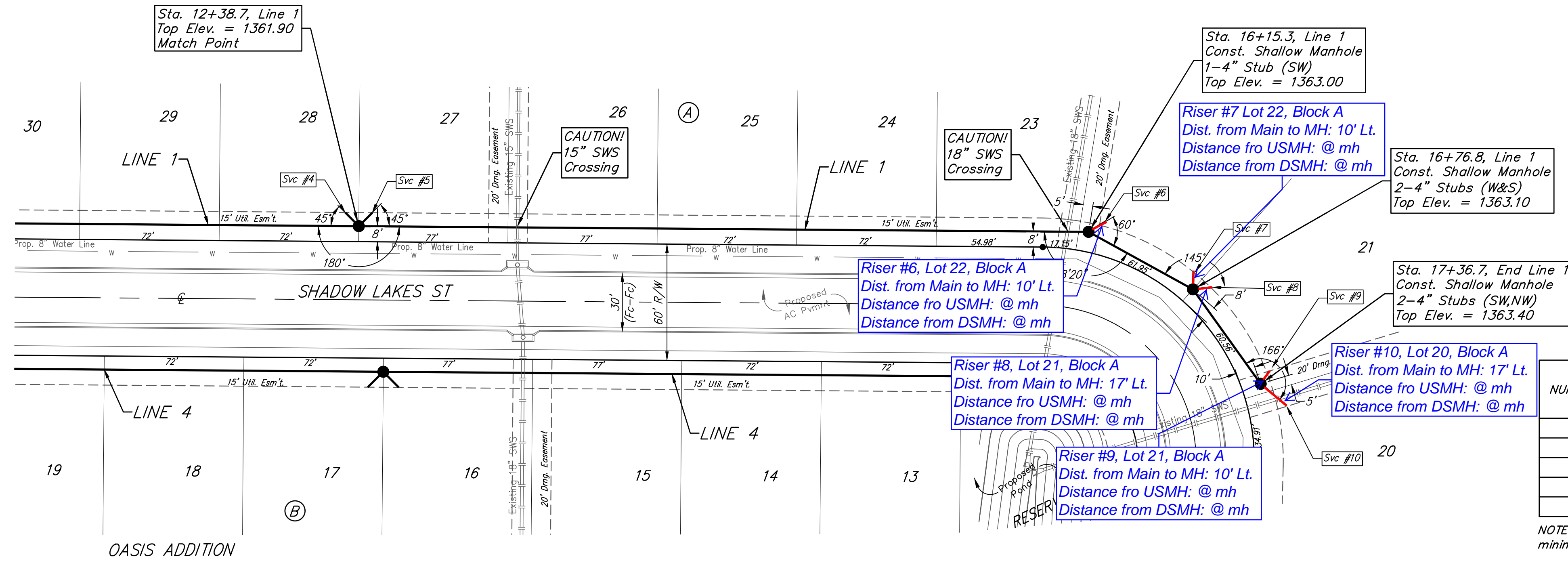
DATE: Mar. 11, 2021

SHEET OF  
**3 18**

**BENCHMARK #1**  
 Railroad Spike in Northeast Face of Power Pole, 31.1' Southwest of #5 Rebar on 50' R/W South, 22± West of Northwest Cor. of Asphalt Drive, 16.3' West & 16.7' South of Southeast Cor., Reserve "B", Oasis Addition.  
 Elev. = 1359.87 NAVD88

**BENCHMARK #2**  
 Chiseled "crowfoot" on North Side of Concrete Slab on North Side of Fontana as Dedicated in Fontana 5th Between Concrete End Sections of Two Reinforced Concrete Pipes, 30.1' East to Northwest Cor. of Curved Masonry Wall Entry Monument on North Side of Said Fontana & 27.4' South to North Line of Back of Curb of Said Fontana Looking East.  
 Elev. = 1359.80 NAVD88

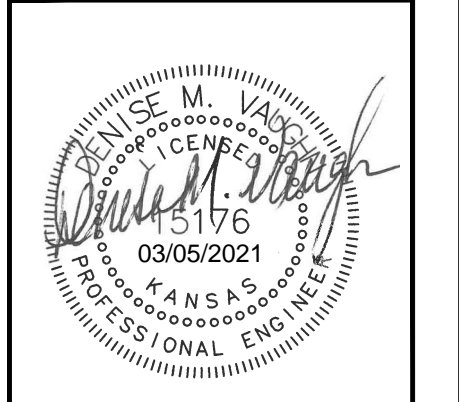
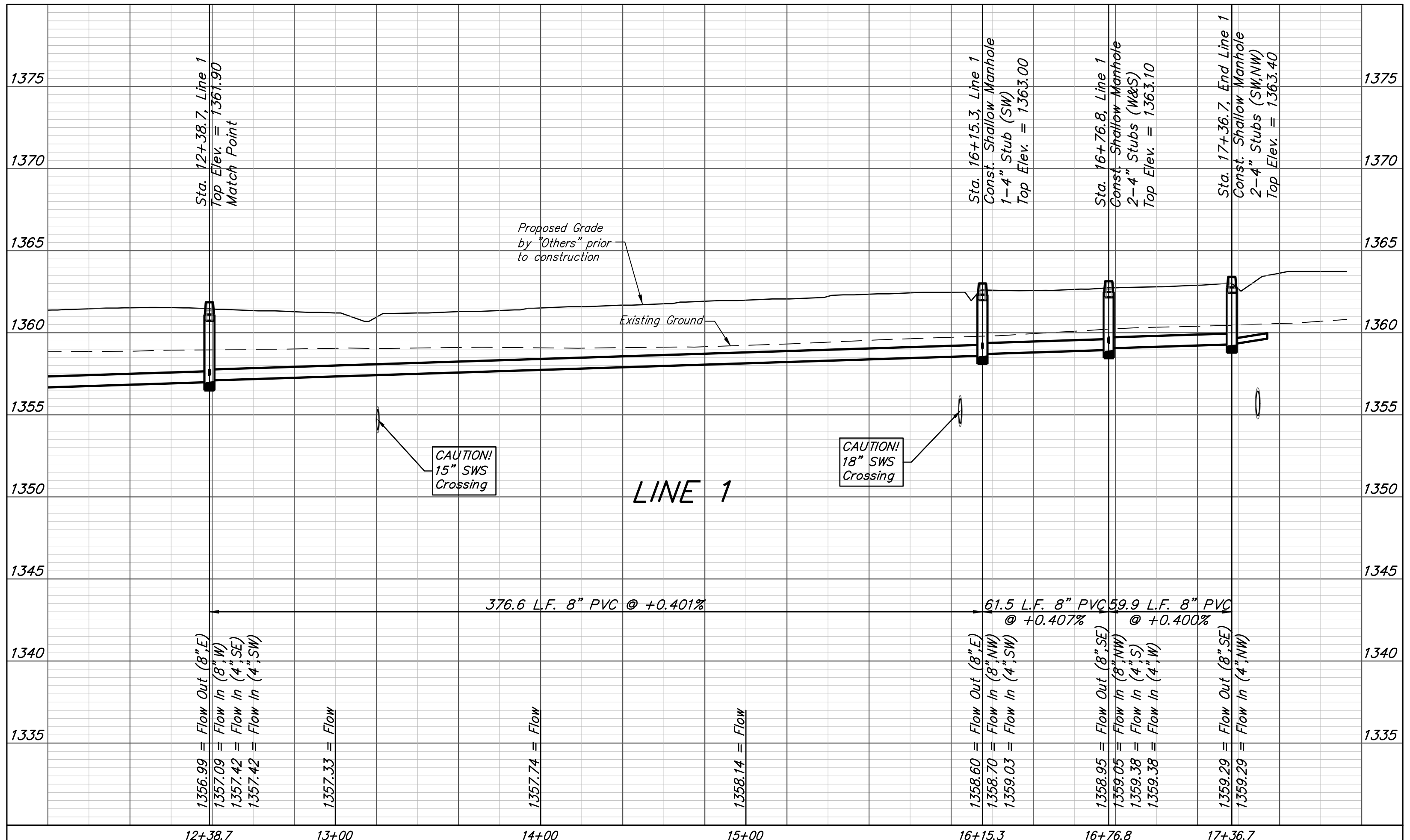
The Contractor shall be required to backfill trench with sand from Sta. 12+38.7 to Sta. 17+36.7, Line 1. To be bid as "L.F. Fill, Sand, Flushed & Vibrated"



**SEWER SERVICE TABLE**

NUMBER	TYPE	LOCATION				FOR INFORMATION ONLY	
		LOT NO.	BLOCK NO.	LINE NO.	STATION/ DIRECTION	APPROXIMATE LENGTH 4" PIPE	VERTICAL
6	4" Stub	22	A	1	16+15.3/Lt.	-	10'
7	4" Stub	22	A	1	16+76.8/Lt.	-	10'
8	4" Stub	21	A	1	16+76.8/Lt.	-	17'
9	4" Stub	21	A	1	17+36.7/Lt.	-	10'
10	4" Stub	20	A	1	17+36.7/Lt.	-	17'

NOTE: When the vertical length is greater than zero, Vertical Riser Pipe shall be extended to 2' minimum above ground water elevation and 4' maximum below proposed ground elevation.



**BAUGHMAN COMPANY**

315 Ellis St.  
 Wichita, KS 67211  
 316-262-7271  
 BaughmanCo.com

Oasis Addition

**LINE 1**

SANITARY SEWER IMPROVEMENTS

PROJECT NUMBER:  
468-2020-017103

DESIGN: DMV DRAWN: JAK

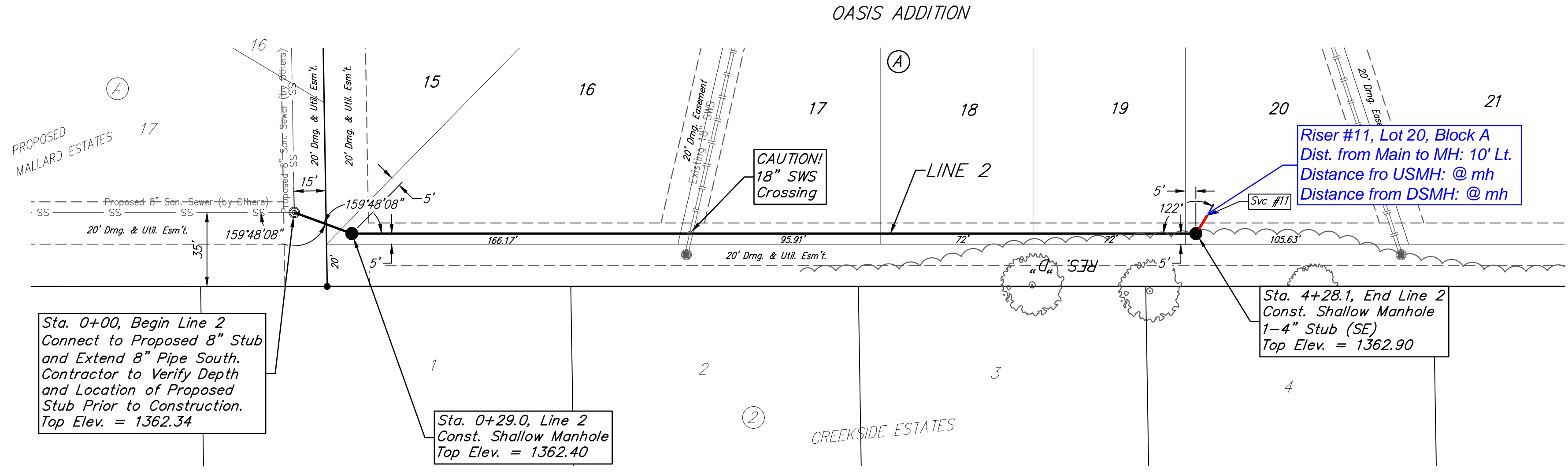
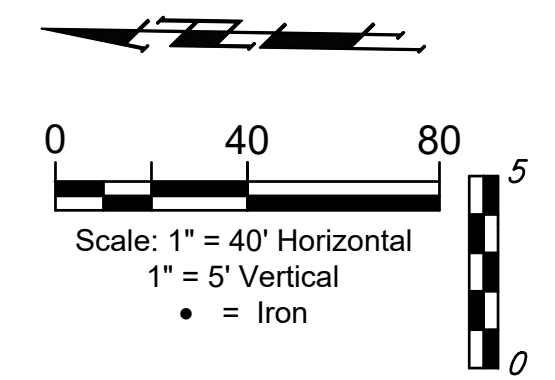
DATE: Mar. 11, 2021

SHEET OF  
**4 18**

File: E:\Projects\Oasis Addition\_1\Engineering\Phase 1\SS\_20-08-EG6318S PLANS.dwg

**BENCHMARK #1**  
 Railroad Spike In Northeast Face of Power Pole, 31.1' Southwest of #5 Rebar on 50' R/W South, 22'± West of Northwest Cor. of Asphalt Drive, 16.3' West & 16.7' South of Southeast Cor., Reserve "B", Oasis Addition.  
 Elev. = 1359.87 NAVD88

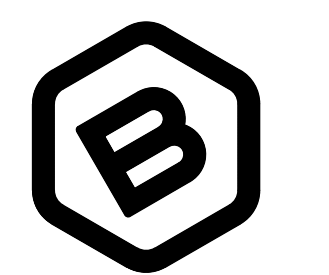
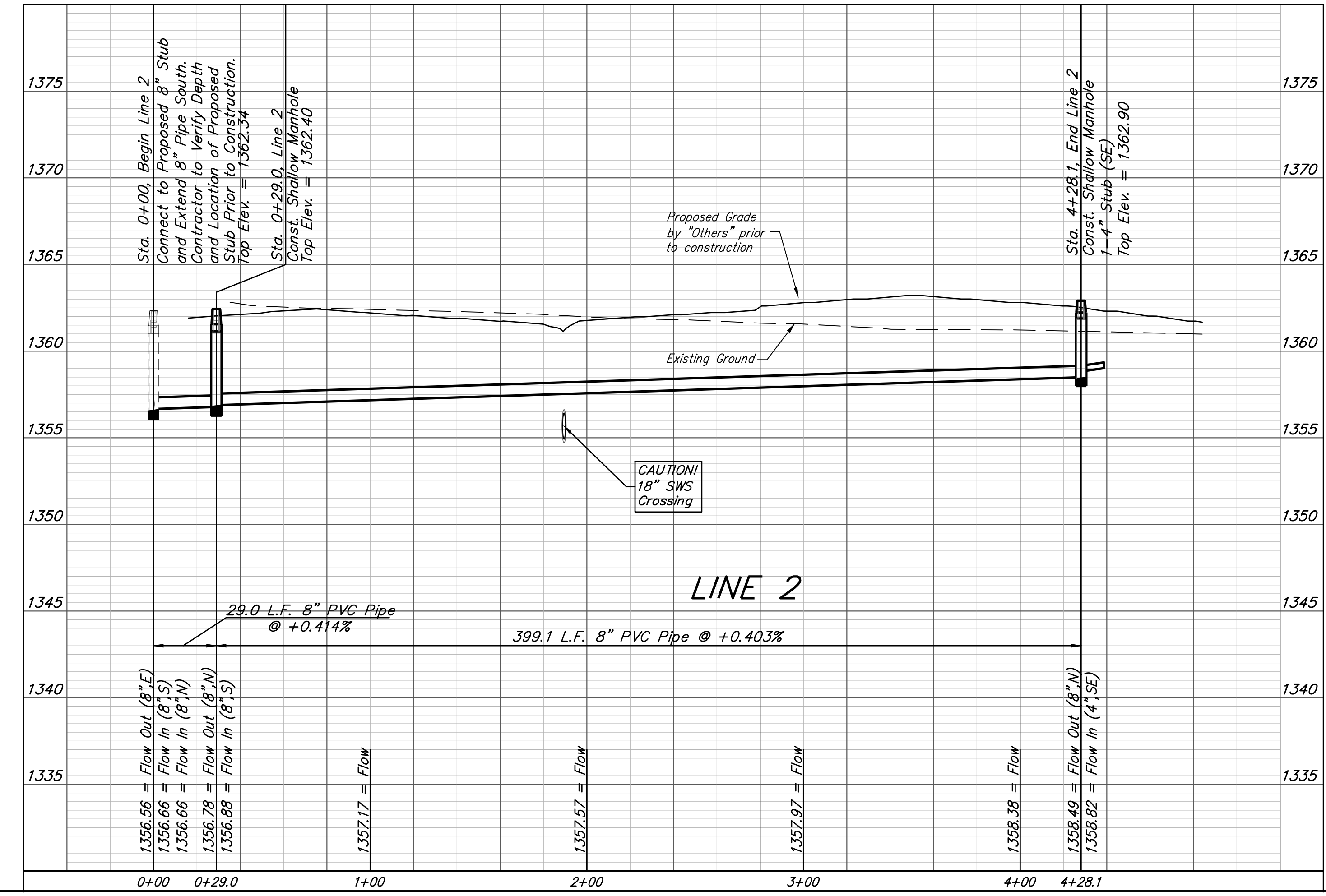
**BENCHMARK #2**  
 Chiseled "crowfoot" on North Side of Concrete Slab on North Side of Fontana as Dedicated in Fontana 5th Between Concrete End Sections of Two Reinforced Concrete Pipes, 30.1' East to Northwest Cor. of Curved Masonry Wall Entry Monument on North Side of Said Fontana & 27.4' South to North Line of Back of Curb of Said Fontana Looking East.  
 Elev. = 1359.80 NAVD88



SEWER SERVICE TABLE

NUMBER	TYPE	LOCATION				FOR INFORMATION ONLY	
		LOT NO.	BLOCK NO.	LINE NO.	STATION/DIRECTION	APPROXIMATE LENGTH 4" PIPE	VERTICAL
11	4" Stub	20	A	2	4+28.1/Lt.	-	10'

NOTE: When the vertical length is greater than zero, Vertical Riser Pipe shall be extended to 2' minimum above ground water elevation and 4' maximum below proposed ground elevation.



**BAUGHMAN COMPANY**  
 315 Ellis St.  
 Wichita, KS 67211  
 316-262-7271  
 BaughmanCo.com

Oasis Addition  
**LINE 2**  
 SANITARY SEWER IMPROVEMENTS  
 PROJECT NUMBER:  
 468-2020-017103  
 DESIGN: DMV DRAWN: JAK  
 DATE: Mar. 11, 2021  
 SHEET **5** OF **18**

File: E:\Projects\Oasis Addition\_1\Engineering\Phase 1\SS\_20-08-EG6318S PLANS.dwg

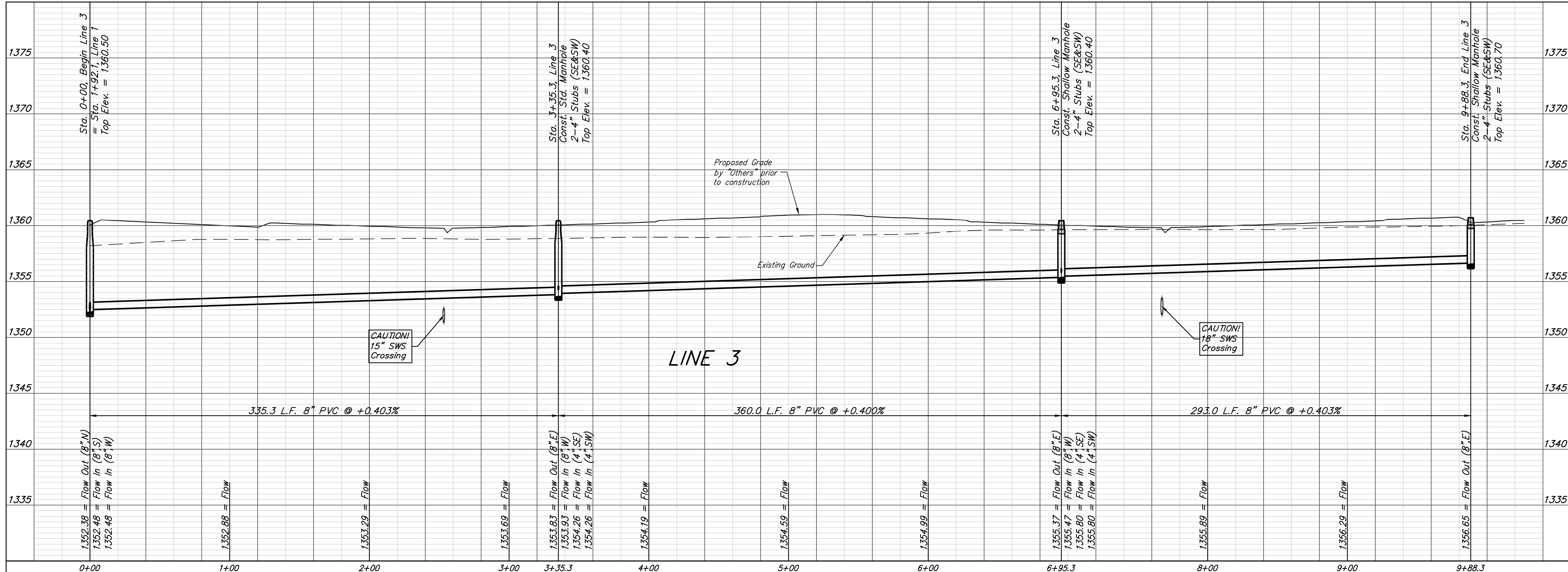
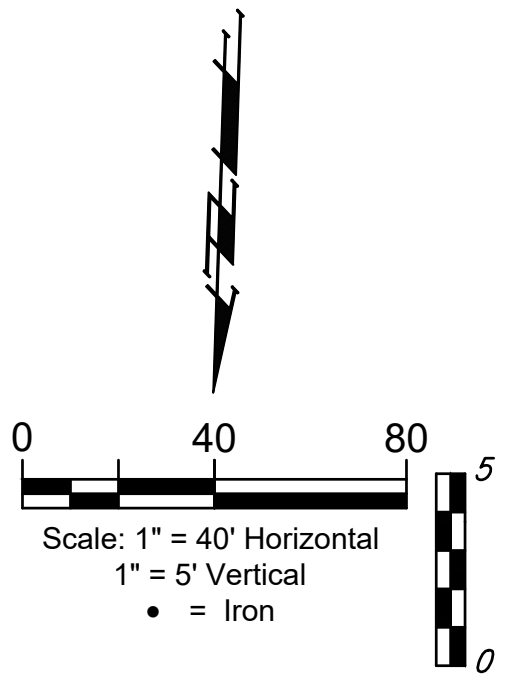
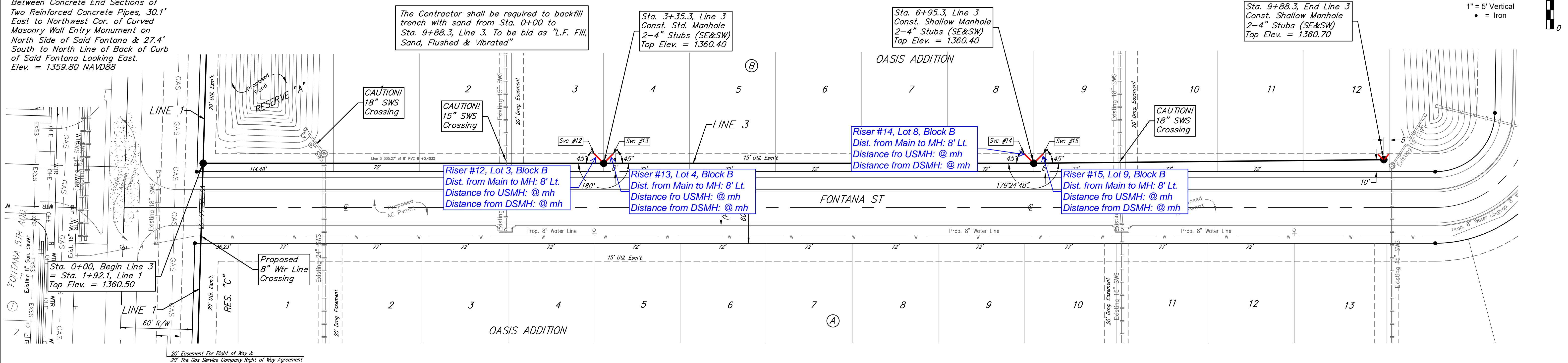
**BENCHMARK #1**  
 Railroad Spike In Northeast Face of Power Pole, 31.1' Southwest of #5 Rebar on 50' R/W South, 22± West of Northwest Cor. of Asphalt Drive, 16.3' West & 16.7' South of Southeast Cor., Reserve "B", Oasis Addition.  
 Elev. = 1359.87 NAVD88

**BENCHMARK #2**  
 Chiseled "crowfoot" on North Side of Concrete Slab on North Side of Fontana as Dedicated in Fontana 5th Between Concrete End Sections of Two Reinforced Concrete Pipes, 30.1' East to Northwest Cor. of Curved Masonry Wall Entry Monument on North Side of Said Fontana & 27.4' South to North Line of Back of Curb of Said Fontana Looking East.  
 Elev. = 1359.80 NAVD88

SEWER SERVICE TABLE

NUMBER	TYPE	LOCATION				FOR INFORMATION ONLY	
		LOT NO.	BLOCK NO.	LINE NO.	STATION/DIRECTION	APPROXIMATE LENGTH 4" PIPE	
12	4" Stub	3	B	3	3+35.3/Lt.	-	8'
13	4" Stub	4	B	3	3+35.3/Lt.	-	8'
14	4" Stub	8	B	3	6+95.3/Lt.	-	8'
15	4" Stub	9	B	3	6+95.3/Lt.	-	8'

NOTE: When the vertical length is greater than zero, Vertical Riser Pipe shall be extended to 2' minimum above ground water elevation and 4' maximum below proposed ground elevation.



**B**  
**BAUGHMAN COMPANY**  
 315 Ellis St.  
 Wichita, KS 67211  
 316-262-7271  
 BaughmanCo.com

Oasis Addition  
**LINE 3**  
 SANITARY SEWER IMPROVEMENTS  
 PROJECT NUMBER: 468-2020-017103  
 DESIGN: DMV DRAWN: JAK  
 DATE: Mar. 11, 2021  
 SHEET OF 18  
**6 18**

File: E:\Projects\Oasis Addition\_1\Engineering\Phase 1\SS\_20-08-EG6318S PLANS.dwg

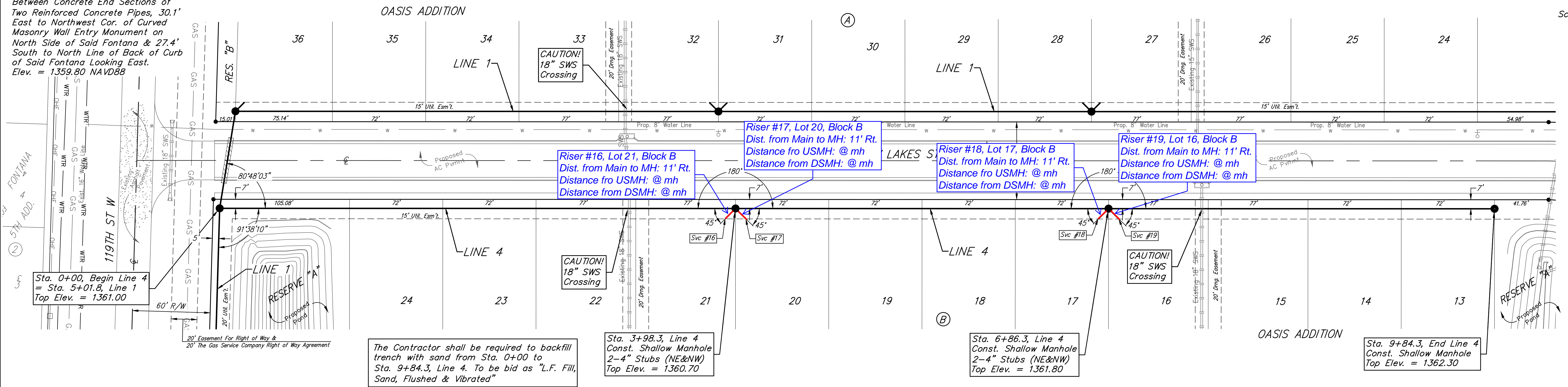
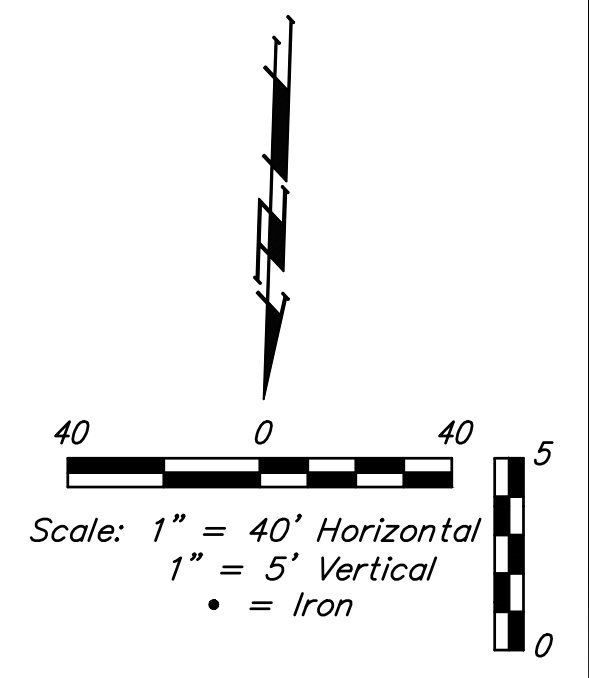
**BENCHMARK #1**  
 Railroad Spike In Northeast Face of Power Pole, 31.1' Southwest of #5 Rebar on 50' R/W South, 22± West of Northwest Cor. of Asphalt Drive, 16.3' West & 16.7' South of Southeast Cor., Reserve "B", Oasis Addition.  
 Elev. = 1359.87 NAVD88

**BENCHMARK #2**  
 Chiseled "crawfoot" on North Side of Concrete Slab on North Side of Fontana as Dedicated in Fontana 5th Between Concrete End Sections of Two Reinforced Concrete Pipes, 30.1' East to Northwest Cor. of Curved Masonry Wall Entry Monument on North Side of Said Fontana & 27.4' South to North Line of Back of Curb of Said Fontana Looking East.  
 Elev. = 1359.80 NAVD88

SEWER SERVICE TABLE

NUMBER	TYPE	LOCATION				FOR INFORMATION ONLY	
		LOT NO.	BLOCK NO.	LINE NO.	STATION/DIRECTION	APPROXIMATE LENGTH 4" PIPE	VERTICAL
16	4" Stub	21	B	4	3+98.3/Rt.	-	11'
17	4" Stub	20	B	4	3+98.3/Rt.	-	11'
18	4" Stub	17	B	4	6+86.3/Rt.	-	11'
19	4" Stub	16	B	4	6+86.3/Rt.	-	11'

NOTE: When the vertical length is greater than zero, Vertical Riser Pipe shall be extended to 2' minimum above ground water elevation and 4' maximum below proposed ground elevation.

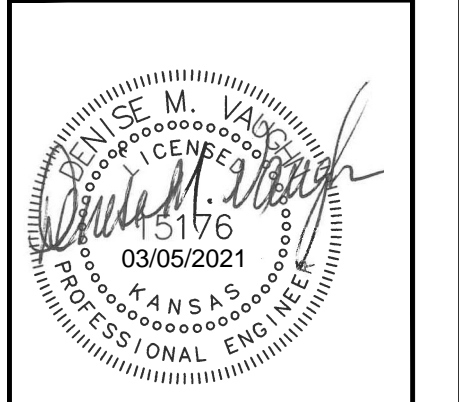
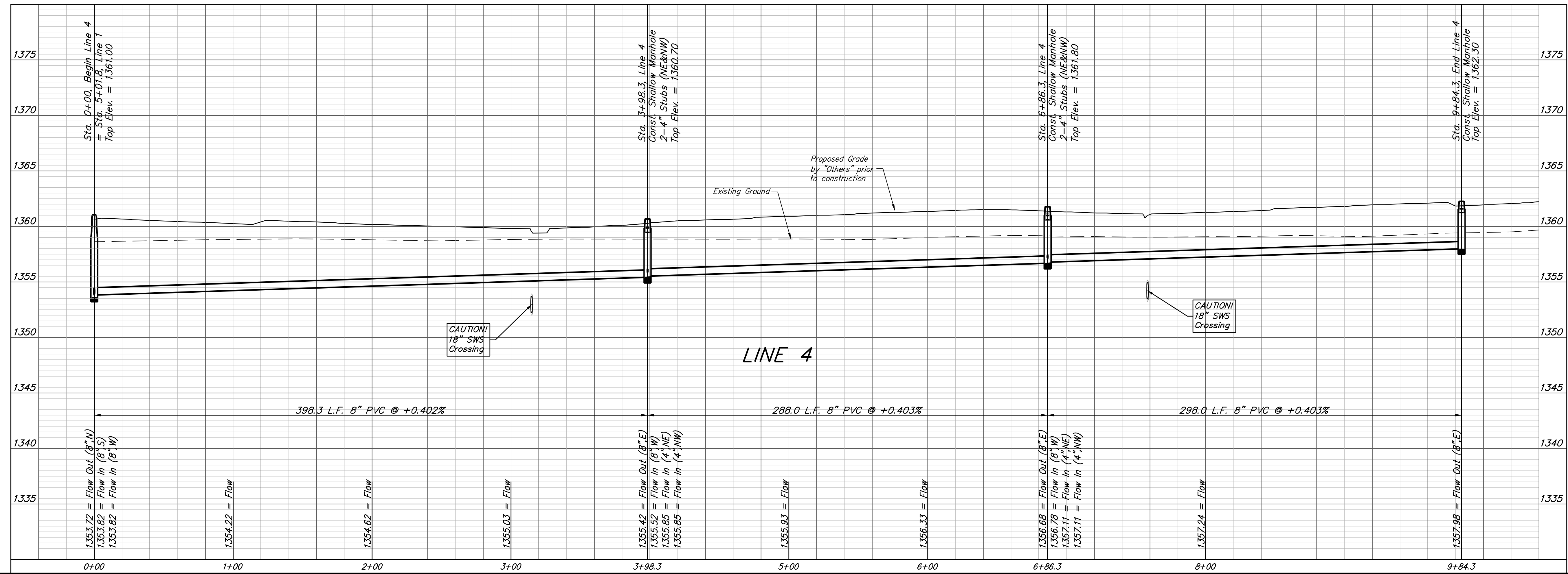


The Contractor shall be required to backfill trench with sand from Sta. 0+00 to Sta. 9+84.3, Line 4. To be bid as "L.F. Fill, Sand, Flushed & Vibrated"

Sta. 3+98.3, Line 4 Const. Shallow Manhole 2-4" Stubs (NE&NW) Top Elev. = 1360.70

Sta. 6+86.3, Line 4 Const. Shallow Manhole 2-4" Stubs (NE&NW) Top Elev. = 1361.80

Sta. 9+84.3, End Line 4 Const. Shallow Manhole Top Elev. = 1362.30



**BAUGHMAN COMPANY**  
 315 Ellis St.  
 Wichita, KS 67211  
 316-262-7271  
 BaughmanCo.com

Oasis Addition

**LINE 4**

SANITARY SEWER IMPROVEMENTS

PROJECT NUMBER:  
468-2020-017103

DESIGN: DMV DRAWN: JAK

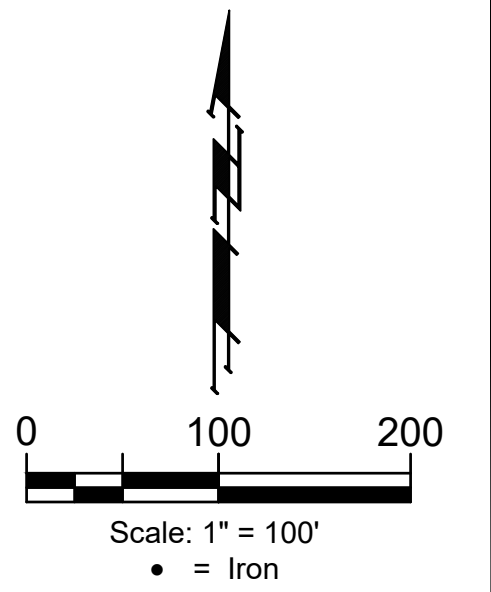
DATE: Mar. 11, 2021

SHEET OF  
**7 18**

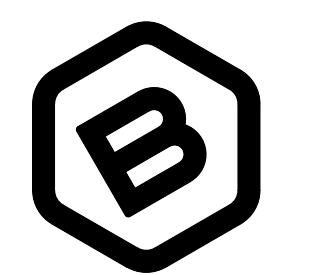
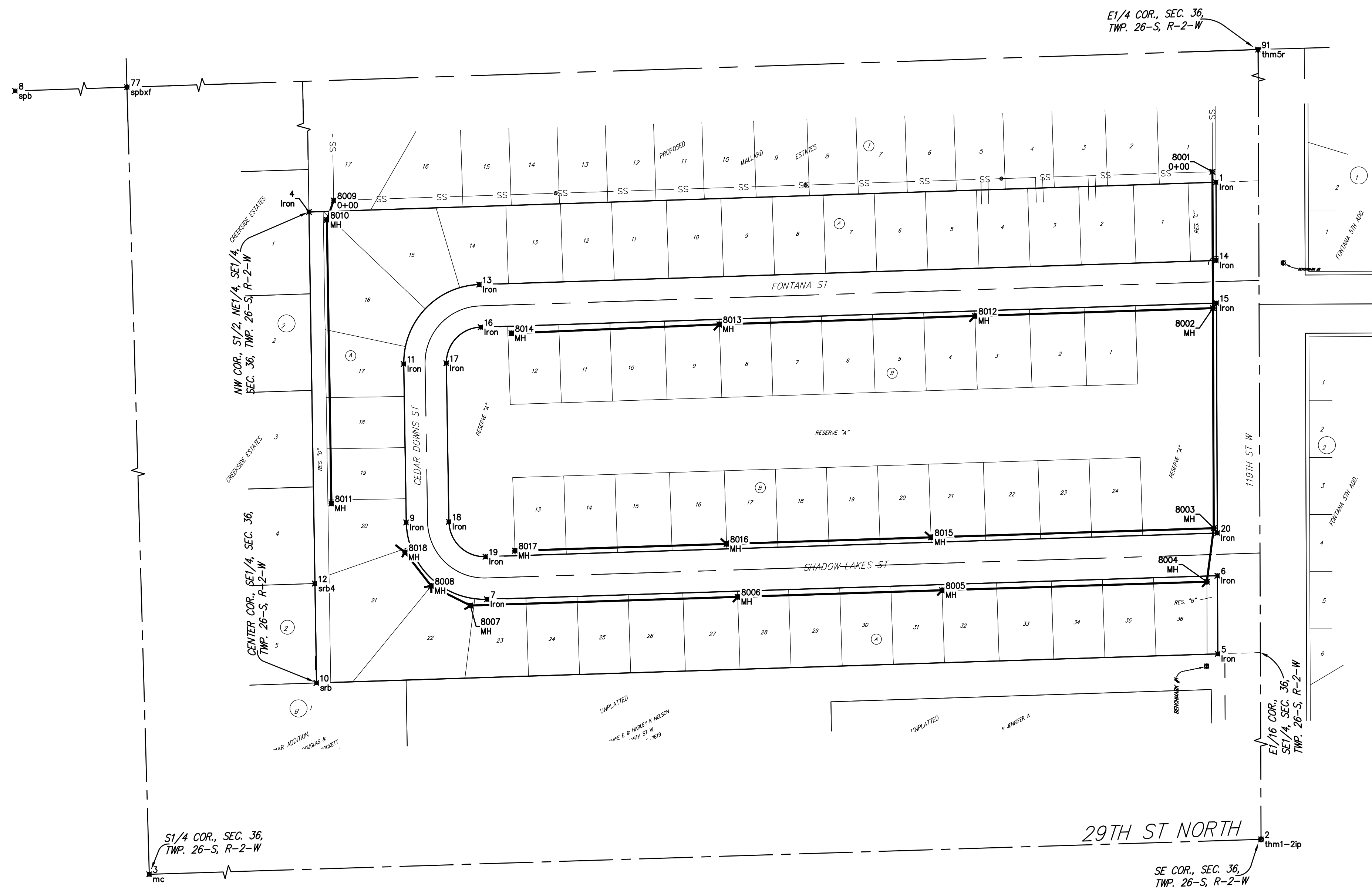
File: E:\Projects\Oasis Addition\_1\Engineering\Phase 1\SS\_20-08-EG6318SS PLANS.dwg

**BENCHMARK #1**  
 Railroad Spike In Northeast Face of  
 Power Pole, 31.1' Southwest of #5  
 Rebar on 50' R/W South, 22'± West  
 of Northwest Cor. of Asphalt Drive,  
 16.3' West & 16.7' South of  
 Southeast Cor., Reserve "B", Oasis  
 Addition.  
 Elev. = 1359.87 NAVD88

**BENCHMARK #2**  
 Chiseled "crowfoot" on North Side of  
 Concrete Slab on North Side of  
 Fontana as Dedicated in Fontana 5th  
 Between Concrete End Sections of  
 Two Reinforced Concrete Pipes, 30.1'  
 East to Northwest Cor. of Curved  
 Masonry Wall Entry Monument on  
 North Side of Said Fontana & 27.4'  
 South to North Line of Back of Curb  
 of Said Fontana Looking East.  
 Elev. = 1359.80 NAVD88



COORDINATE POINTS			
Point	Northing	Easting	Desc
1	1,705,623.18	1606942.73	Iron
2	1,703,633.41	1607010.13	thm1-2ip
3	1,703,551.61	1604385.06	mc
4	1,705,581.32	1605665.63	Iron
5	1,704,959.33	1606945.20	Iron
6	1,705,069.38	1606944.79	Iron
7	1,705,036.17	1605916.20	Iron
8	1,706,111.89	1601685.12	spb
9	1,705,144.35	1605802.66	Iron
10	1,704,918.45	1605676.24	srb
11	1,705,367.42	1605799.08	Iron
12	1,705,058.33	1605673.82	srb4
13	1,705,479.12	1605905.46	Iron
14	1,705,513.13	1606943.14	Iron
15	1,705,453.11	1606943.36	Iron
16	1,705,419.16	1605907.43	Iron
17	1,705,368.38	1605859.07	Iron
18	1,705,145.31	1605862.66	Iron
19	1,705,096.14	1605914.26	Iron
20	1,705,129.40	1606944.57	Iron
77	1,706,199.39	1604309.95	spbxf
91	1,706,289.06	1607000.26	thm5r
8001	1,705,638.02	1606937.68	0+00
8002	1,705,445.94	1606938.39	MH
8003	1,705,136.24	1606939.54	MH
8004	1,705,060.89	1606929.82	MH
8005	1,705,048.86	1606557.10	MH
8006	1,705,039.56	1606269.25	MH
8007	1,705,027.41	1605892.86	MH
8008	1,705,054.87	1605837.83	MH
8009	1,705,597.47	1605700.37	0+00
8010	1,705,570.13	1605690.81	MH
8011	1,705,171.03	1605697.22	MH
8012	1,705,434.96	1606603.30	MH
8013	1,705,423.17	1606243.49	MH
8014	1,705,410.57	1605950.74	MH
8015	1,705,123.39	1606541.47	MH
8016	1,705,114.10	1606253.62	MH
8017	1,705,104.48	1605955.78	MH
8018	1,705,102.15	1605800.99	MH



**BAUGHMAN  
 COMPANY**  
 315 Ellis St.  
 Wichita, KS 67211  
 316-262-7271  
 BaughmanCo.com

Oasis Addition

**COORDINATES**

SANITARY SEWER  
 IMPROVEMENTS  
 PROJECT NUMBER:  
 468-2020-017103  
 DESIGN: DMV DRAWN: JAK  
 DATE: Mar. 11, 2021  
 SHEET OF  
**17 18**

File: E:\Projects\Oasis Addition\_1\Engineering\Phase 1\SS\_20-08-EG63\SS PLANS.dwg