

GENERAL NOTES:

1. Contractor will be required to provide notice to utility companies a minimum of seventy-two (72) hours prior to any excavation, as follows:

Kansas One-Call 687-2470

The Contractor must notify the following in case of an emergency:

- Cox Communications 262-4270
- Kansas Gas Service 1-888-482-4950
- Energry 383-8650
- Aquila Energy 1-800-303-0357
- AT&T 268-2245
- City of Wichita Water Dept. 268-4563
- City of Wichita Sewer Maint. 268-4024
- City of Wichita Storm Sewer Maint. 268-4090
- City of Wichita Traffic Maint. 268-4034
- Conoco Phillips Pipeline Co. 1-877-267-2290
- Southern Star Pipeline Co. 529-6600
- Kinder-Morgan Pipeline Co. 1-888-844-5658

2. Utility service lines, poles, valve boxes, meters, and etcetera are to be adjusted as necessary by others prior to construction unless the plans specifically call for their adjustment by the Contractor or unless the plans specifically identify a utility to be adjusted by its owner during construction. Existing utilities and their location, as shown on the plans, represent the best information obtainable for design. The Contractor will be required to work around existing utilities within the right-of-way which do not conflict with proposed construction.

3. Rubble from the removal of miscellaneous structures and excess excavation which is to be wasted shall be disposed of on sites to be provided by the Contractor. These sites shall be approved by the Engineer as to suitability, appearance and site location. Locations, in the opinion of the Engineer, that will leave an unsightly appearance will not be approved. All disposal sites must be approved by the Kansas Department of Health and Environment. Material either stockpiled or disposed of in a flood plain would require a Kansas State Board of Agriculture permit. Any material dumped in waters of the United States or wetlands is subject to U.S. Corps. of Engineers permitting regulations. Any material buried or stockpiled beyond approved construction limits would require additional archaeological investigations unless buried in a previously approved borrow location.

4. Trees and shrubs in public right-of-way which are in direct conflict with proposed new construction shall be removed by the Contractor with the Engineer's approval. Trees and shrubs which are not in direct conflict with proposed new construction shall be saved and protected from damage.

5. The Contractor shall give all property owners and/or tenants of developed property abutting the construction of this project a minimum of ten (10) days notice prior to start of construction.

6. The Contractor shall be responsible for preserving property irons. The Contractor will be required to re-establish any property irons which are damaged or destroyed by his construction operations. Such irons shall be re-established by a licensed land surveyor in accordance with state laws.

7. All existing and proposed erosion control measures including silt fencing, erosion control mat, straw bales, inlet barriers, and const. entrance shall be maintained throughout construction by the contractor and until project is accepted by the City of Wichita. The on-site engineer shall complete weekly reports on the status of erosion control measures. The contractor shall be required to comply with maintenance and/or replacement of erosion control measures as determined by the on-site engineer until project is accepted by City of Wichita. Maintenance and/or replacement of erosion control measures to be paid by L.S. bid item "Maintain Existing BMP's."

8. All excess excavation shall remain on-site and shall be stockpiled or spread at a location determined by the Engineer.

9. All areas disturbed during construction shall be seeded as follows (Temporary Seeding):

Seed: Rye grass (PLS)--5 lbs./1000 Sq. Ft.

All costs associated with seeding shall be included in biditem "Seeding".

10. Trees and shrubs in the work area which are in direct conflict with proposed new construction shall be removed by the Contractor ONLY with the Developer or Baughman Company approval. Trees and shrubs which are not in direct conflict with proposed new construction shall be saved and protected from damage. If trimming is necessary, a chainsaw shall be used. Breaking limbs with equipment will not be allowed. An on-site pre-construction meeting will occur prior to any construction to discuss tree removal, tree protection, and tree trimming.

11. Contractor is responsible for applying for County Permit to work in Maize Road (Sedgwick County R/W)

Benchmarks

BENCHMARKS:
3/8" IP CNTR SEC. 5, TWP. 28-S, R-1-W.
Elev. = 1315.56 NAVD88

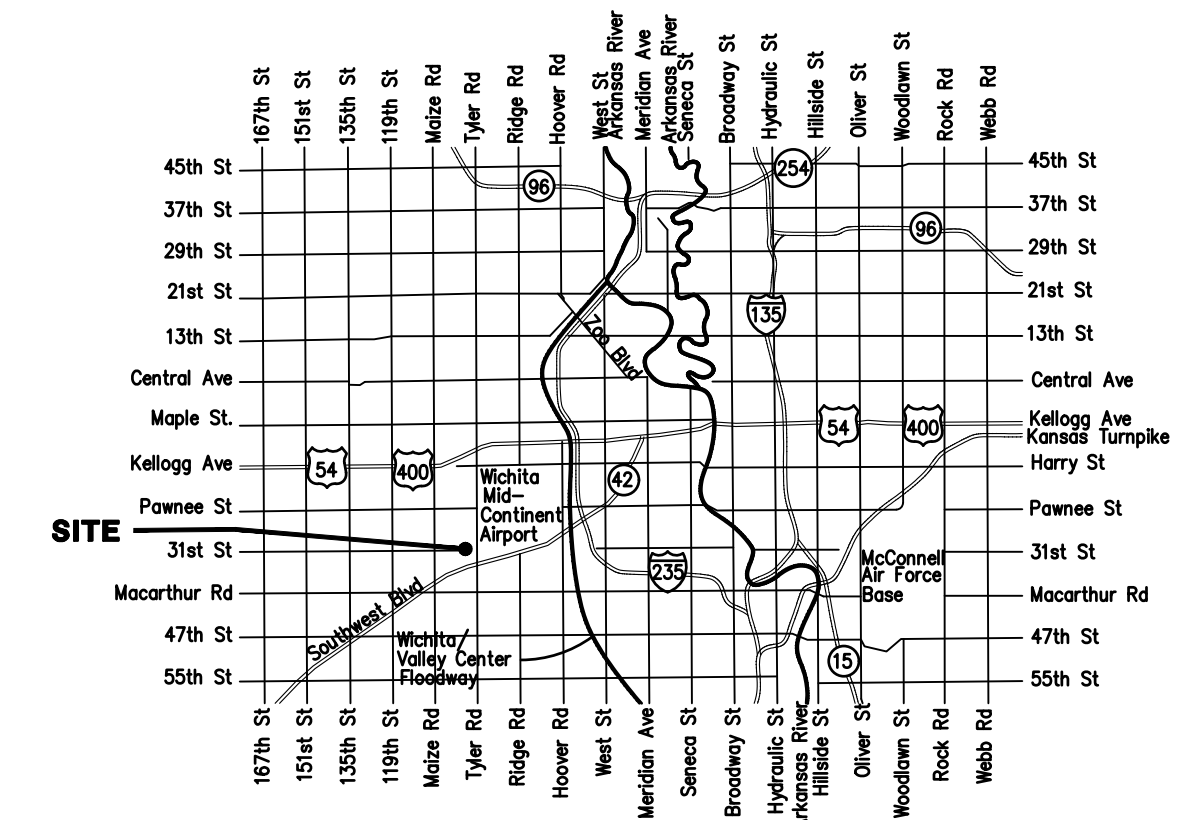
Mag Disk in edge of Asphalt,
755'± E. of Cntr Sec. 5, TWP. 28-S, R-1-W &
188'± S. of N. line, SE1/4,
Sec. 5, TWP. 8-S, R-1-W.
Elev. = 1305.61 NAVD88

#4 IP NE Cor., SW1/4,
Sec. 5, TWP. 28-S, R-1-W.
Elev. = 1334.01 NAVD88

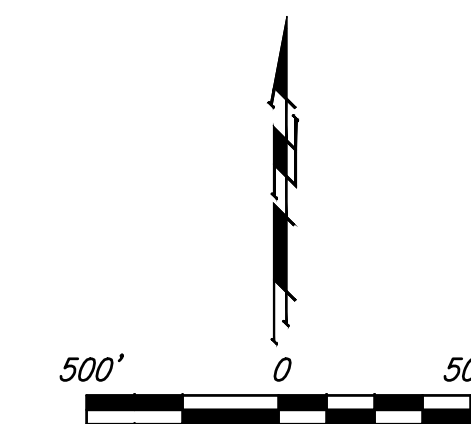
Phase I SANITARY SEWER MAIN IMPROVEMENTS to serve **SCHULTE JOHNSON 2ND ADDITION** CITY OF WICHITA, KANSAS

Gary Janzen, P.E. City Engineer
Project Number 468-2020-032548 (S0028)
OCA Number 820044

McCullough - Contractor
K. Kerns - City of Wichita, Field Project Engineer
R. Flores - City of Wichita, Inspector
As-built
Release Date (for connection purposes only): 1/10/2022
Completion Date:
pdf: apr 4/1/2022



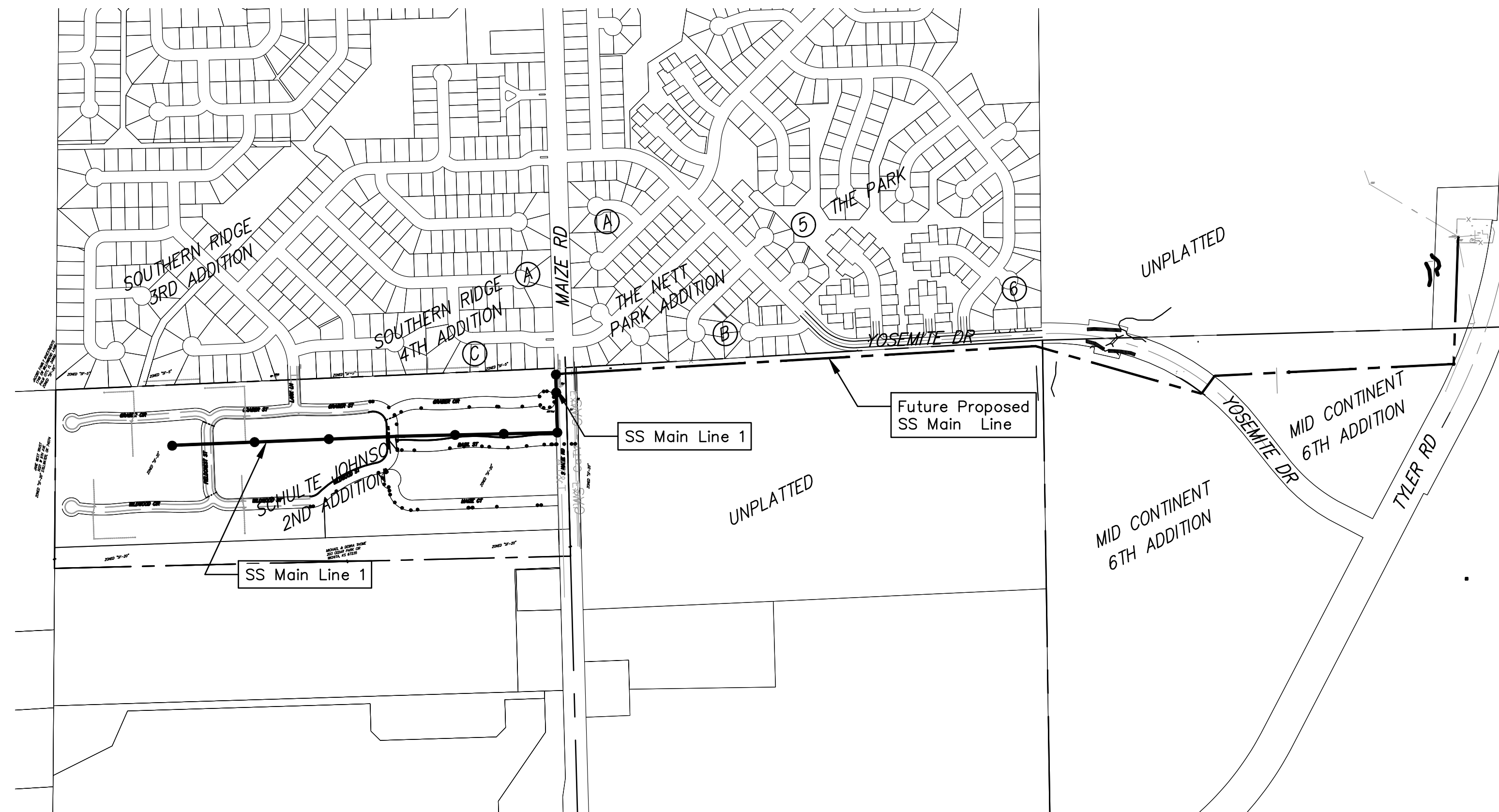
Vicinity Map



Sheet Index

| | |
|------------------------------|-----|
| Title Sheet | 1 |
| Precast SS Manhole Detail | 2 |
| Manhole Frame & Cover Detail | 3 |
| Line 1 Plan and Profile | 4-9 |
| Erosion Control Plan | 10 |
| Coordinate Sheet | 11 |
| Copy of Plat | 12 |

*Current Sanitary Sewer Control Details are available at City of Wichita web site at <http://www.wichita.gov/PWU/StandardsConstruction/Forms/WebPageStandardsConstruction.aspx>



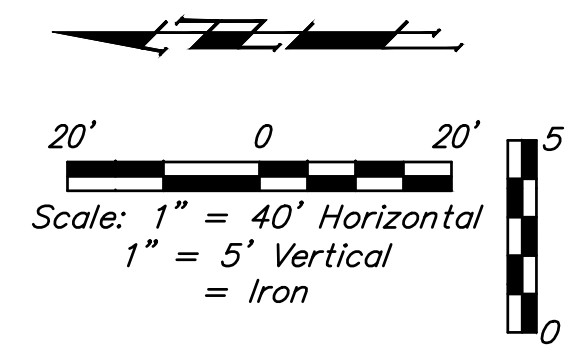
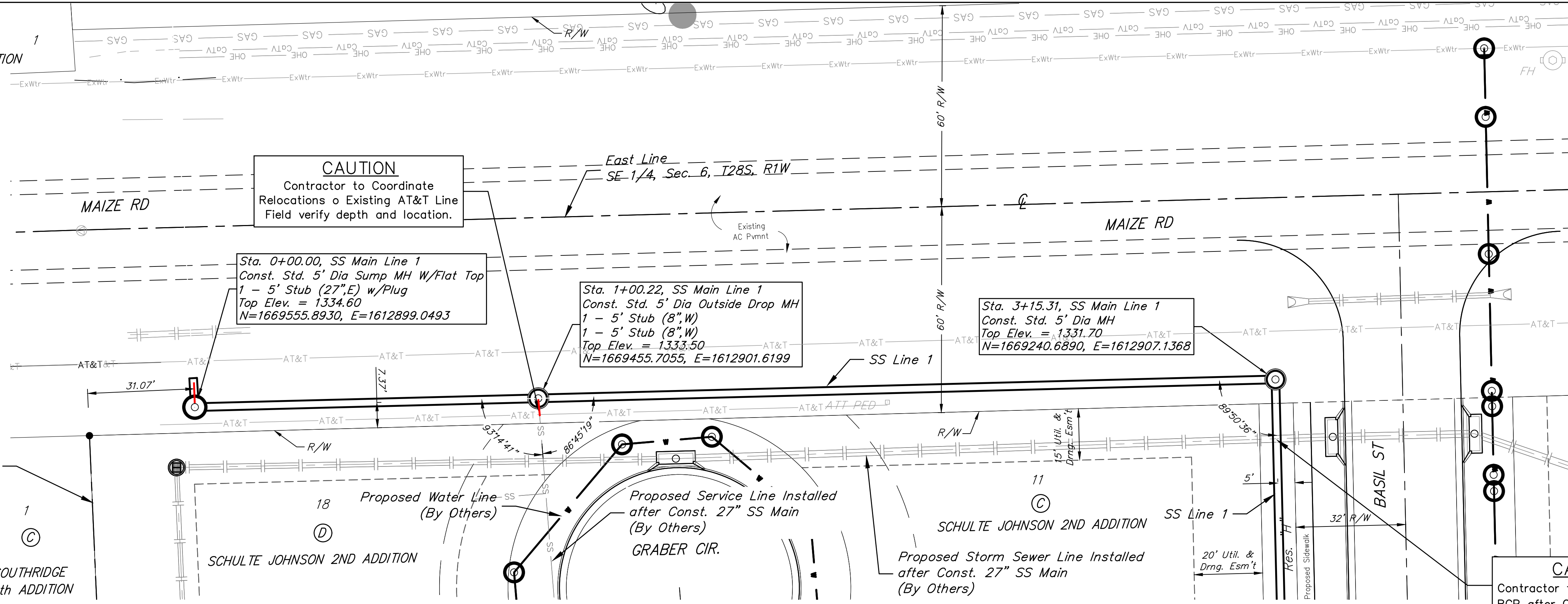
February 10, 2021

Rev. 1, 3-29-21: Added SSMH Sump Elevation on Profile



Baughman Company, P.A. 315 Ellis St. Wichita, KS 67211 P 316-262-7271 F 316-262-0149
ENGINEERING | SURVEYING | PLANNING | LANDSCAPE ARCHITECTURE

THE NETT PARK ADDITION

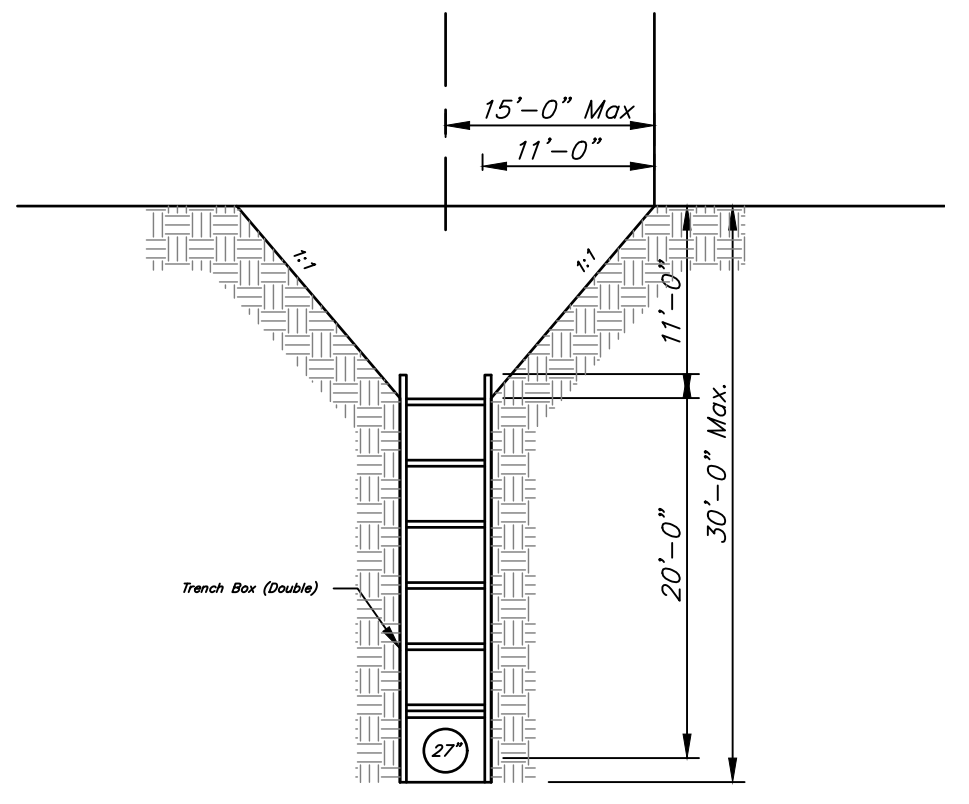
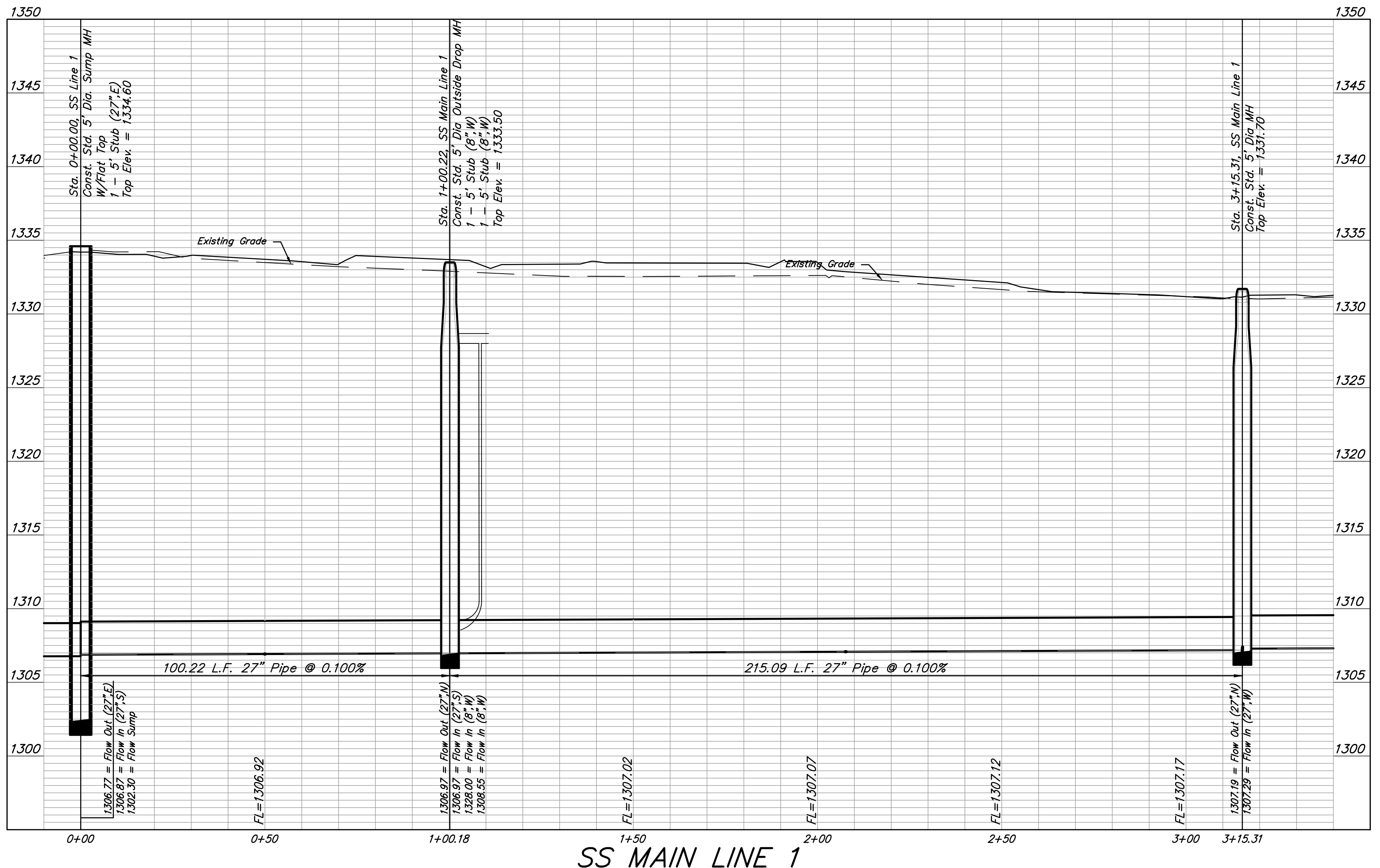


Benchmarks

BENCHMARKS:
 3/8" IP CNTR SEC. 5,
 TWP. 28-S, R-1-W.
 Elev. = 1315.56 NAVD88

Mag Disk in edge of Asphalt,
 755± E. of Cntr Sec. 5,
 TWP. 28-S, R-1-W &
 188± S. of N. line, SE1/4,
 Sec. 5, TWP. 8-S, R-1-W.
 Elev. = 1305.61 NAVD88

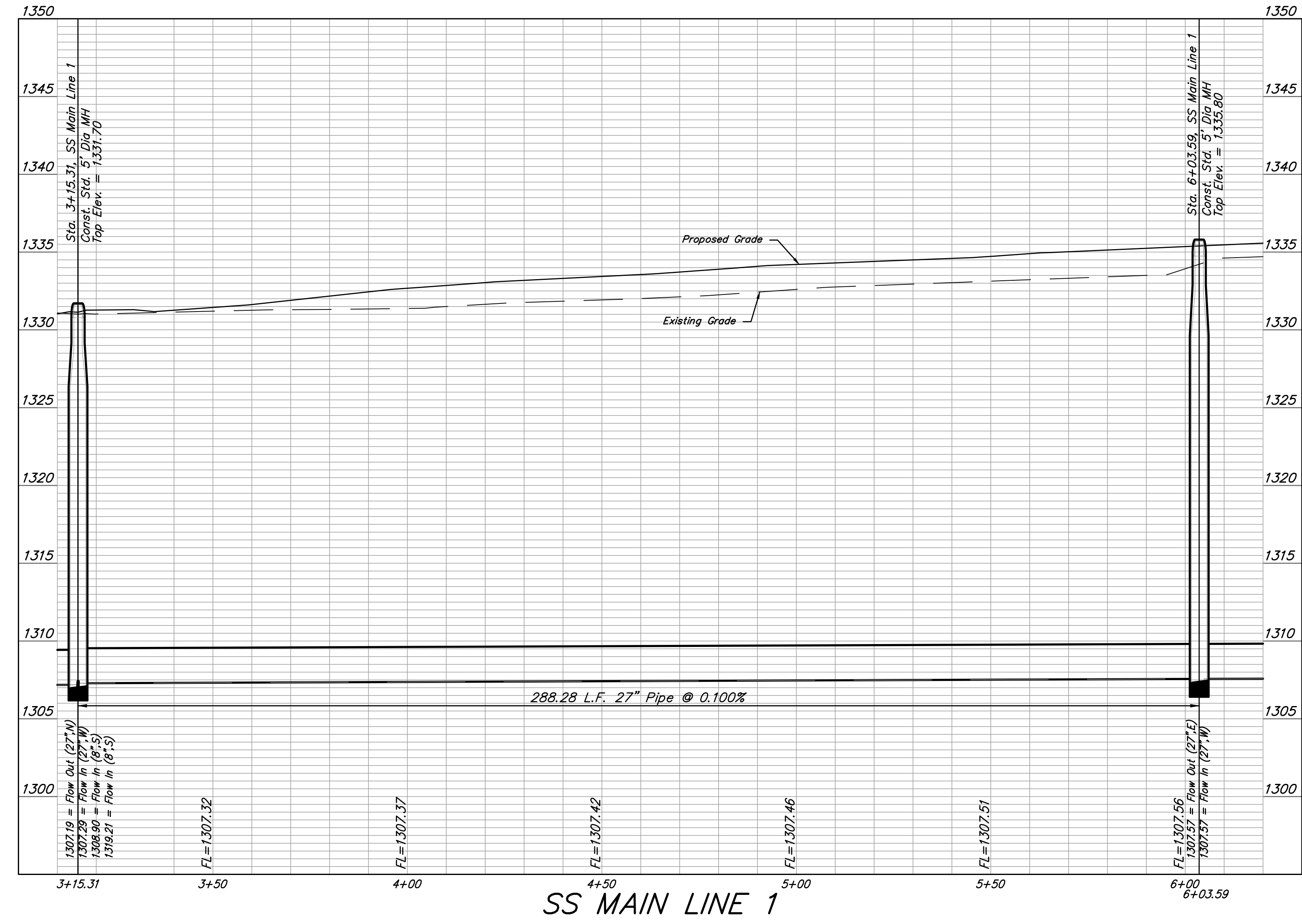
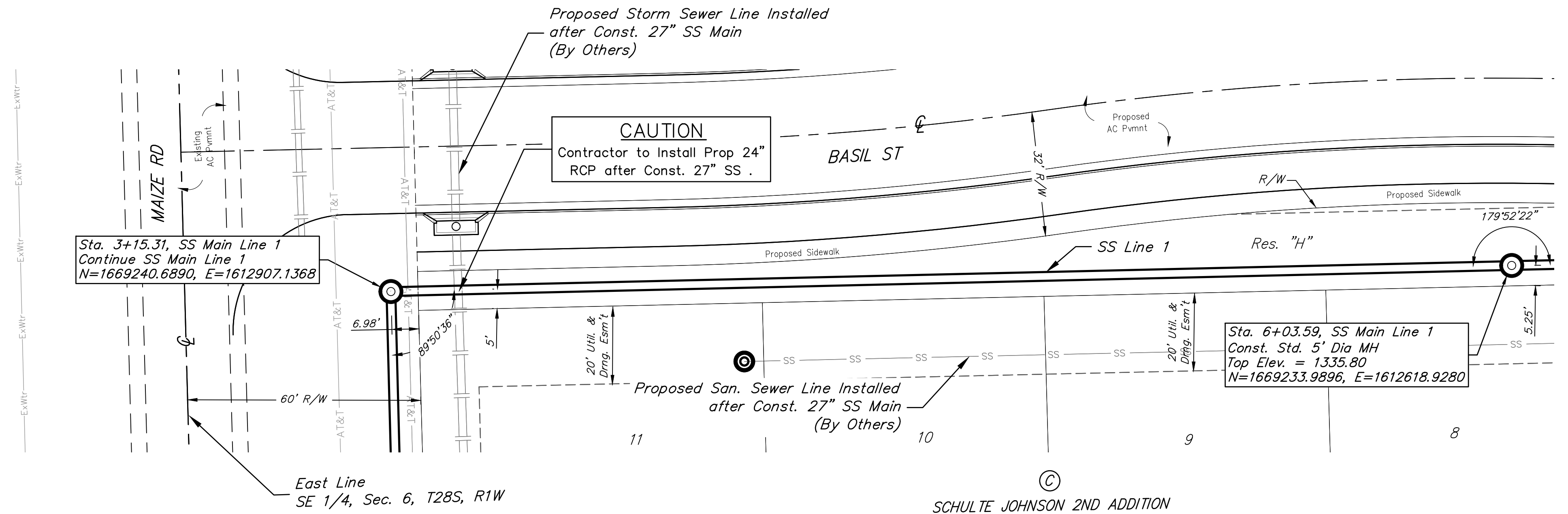
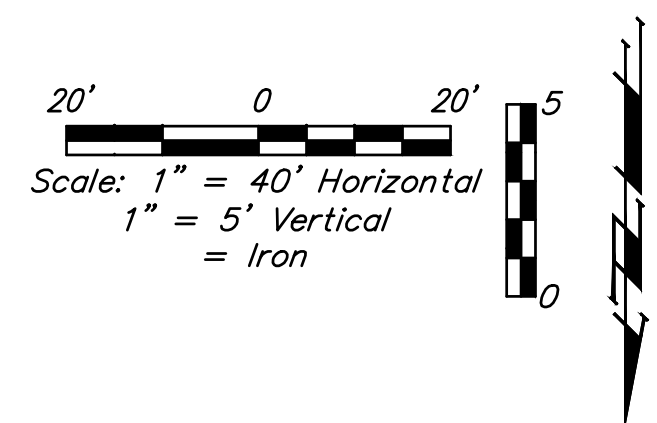
#4 IP NE Cor., SW1/4,
 Sec. 5, TWP. 28-S, R-1-W.
 Elev. = 1334.01 NAVD88



1 TRENCH BOX DETAIL
 NOT TO SCALE

Baughman Company, P.A.
 115 E. Main St., Wichita, KS 67211 P: 316.262.2711 F: 316.262.0149
 ENGINEERING | SURVEYING | PLANNING | LANDSCAPE ARCHITECTURE
 The City of Prague, Schulte-Johnson, Sec. 5, Twp. 28-S, R-1-W, Pl. 12

Schulte-Johnson 2nd Addition
SS LINE 1
 Sanitary Sewer Line Improvements



Benchmarks

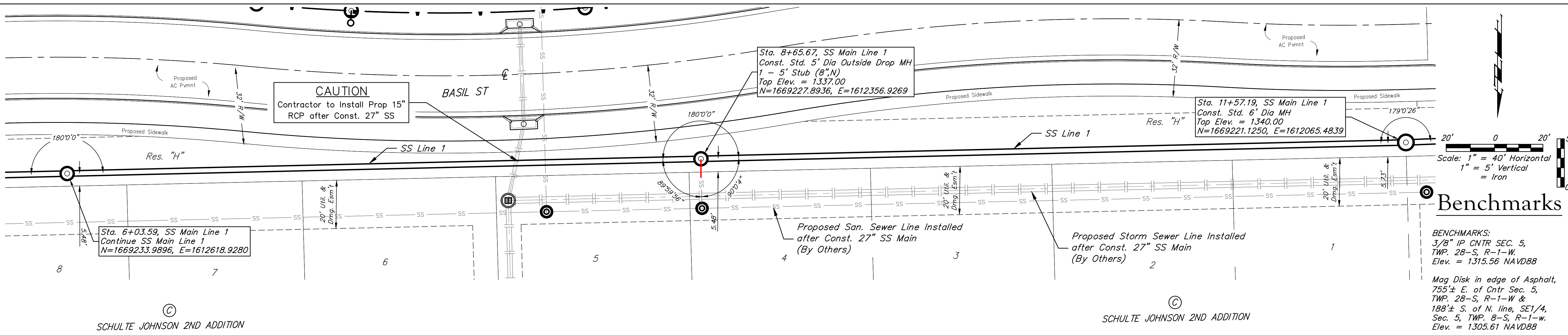
BENCHMARKS:
 3/8" IP CNTR SEC. 5,
 TWP. 28-S, R-1-W.
 Elev. = 1315.56 NAVD88

Mag Disk in edge of Asphalt,
 755± E. of Cntr Sec. 5,
 TWP. 28-S, R-1-W &
 188± S. of N. line, SE1/4,
 Sec. 5, TWP. 8-S, R-1-W.
 Elev. = 1305.61 NAVD88

#4 IP NE Cor., SW1/4,
 Sec. 5, TWP. 28-S, R-1-W.
 Elev. = 1334.01 NAVD88

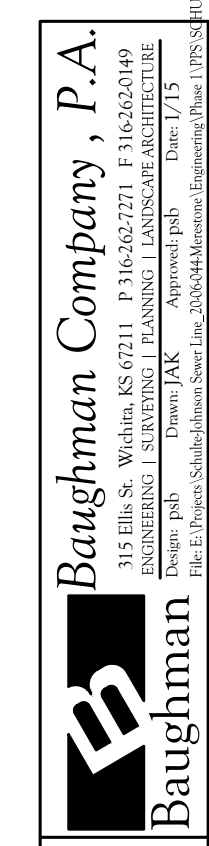
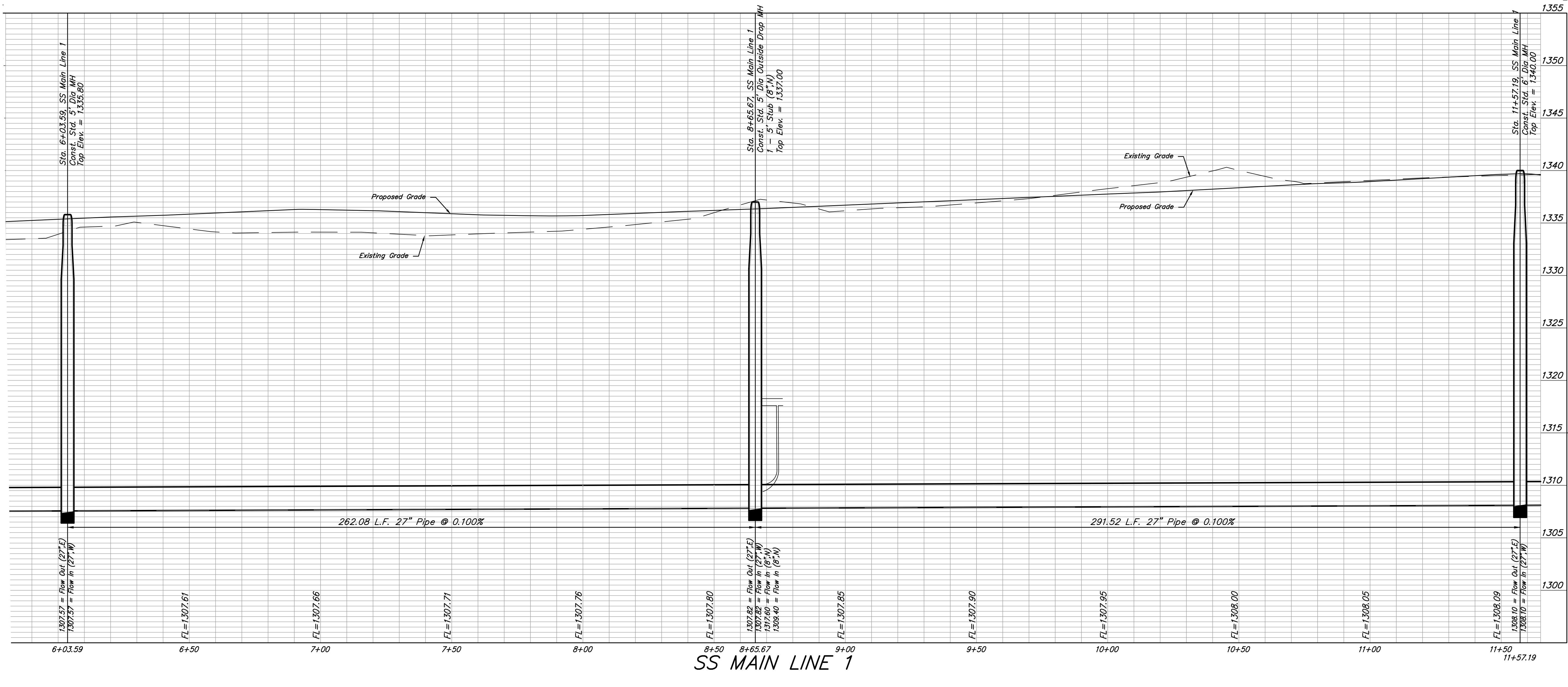


Schulte-Johnson 2nd Addition
SS LINE 1
 Sanitary Sewer Line Improvements

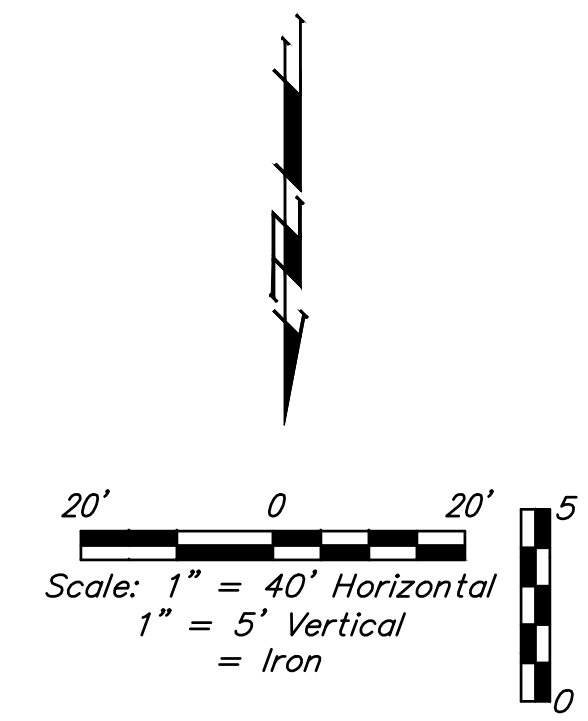
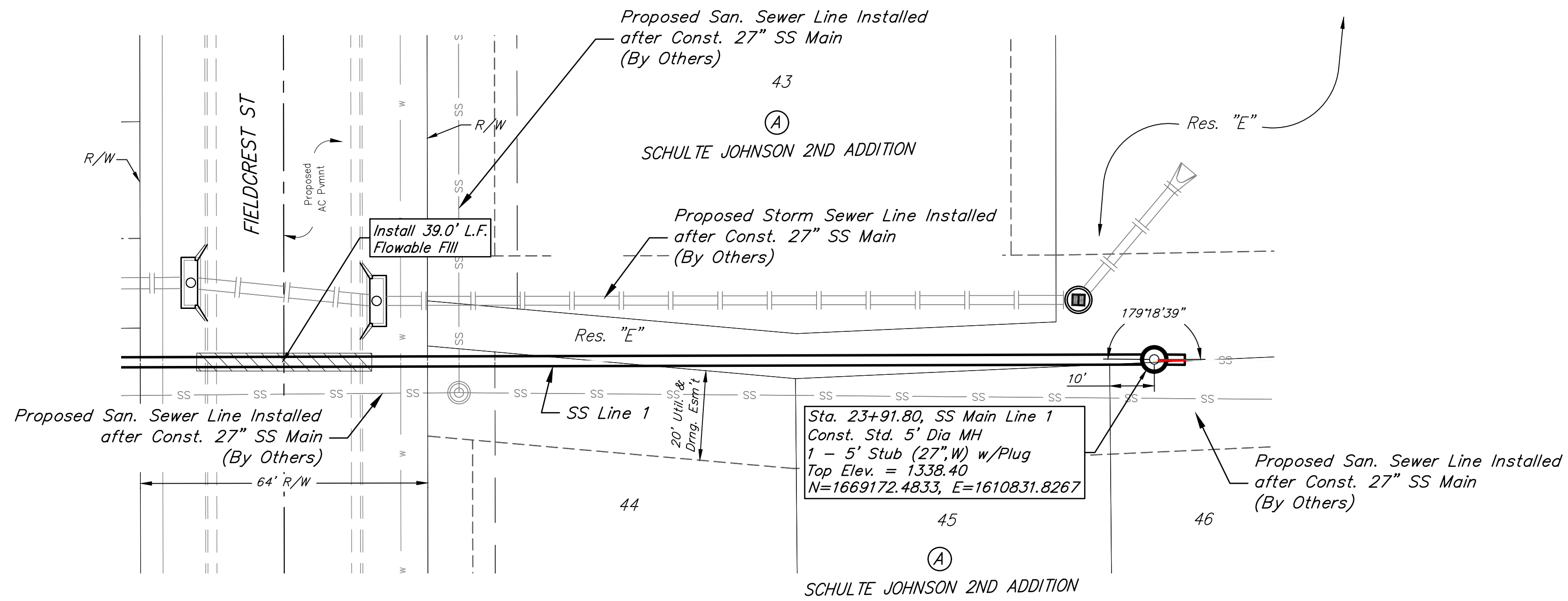


©
SCHULTE JOHNSON 2ND ADDITION

©
SCHULTE JOHNSON 2ND ADDITION



Schulte-Johnson 2nd Addition
SS LINE 1
Sanitary Sewer Line Improvements



Benchmarks

BENCHMARKS:
 3/8" IP CNTR SEC. 5,
 TWP. 28-S, R-1-W.
 Elev. = 1315.56 NAVD88

Mag Disk in edge of Asphalt,
 755± E. of Cntr Sec. 5,
 TWP. 28-S, R-1-W &
 188± S. of N. line, SE1/4,
 Sec. 5, TWP. 8-S, R-1-w.
 Elev. = 1305.61 NAVD88

#4 IP NE Cor., SW1/4,
 Sec. 5, TWP. 28-S, R-1-W.
 Elev. = 1334.01 NAVD88

