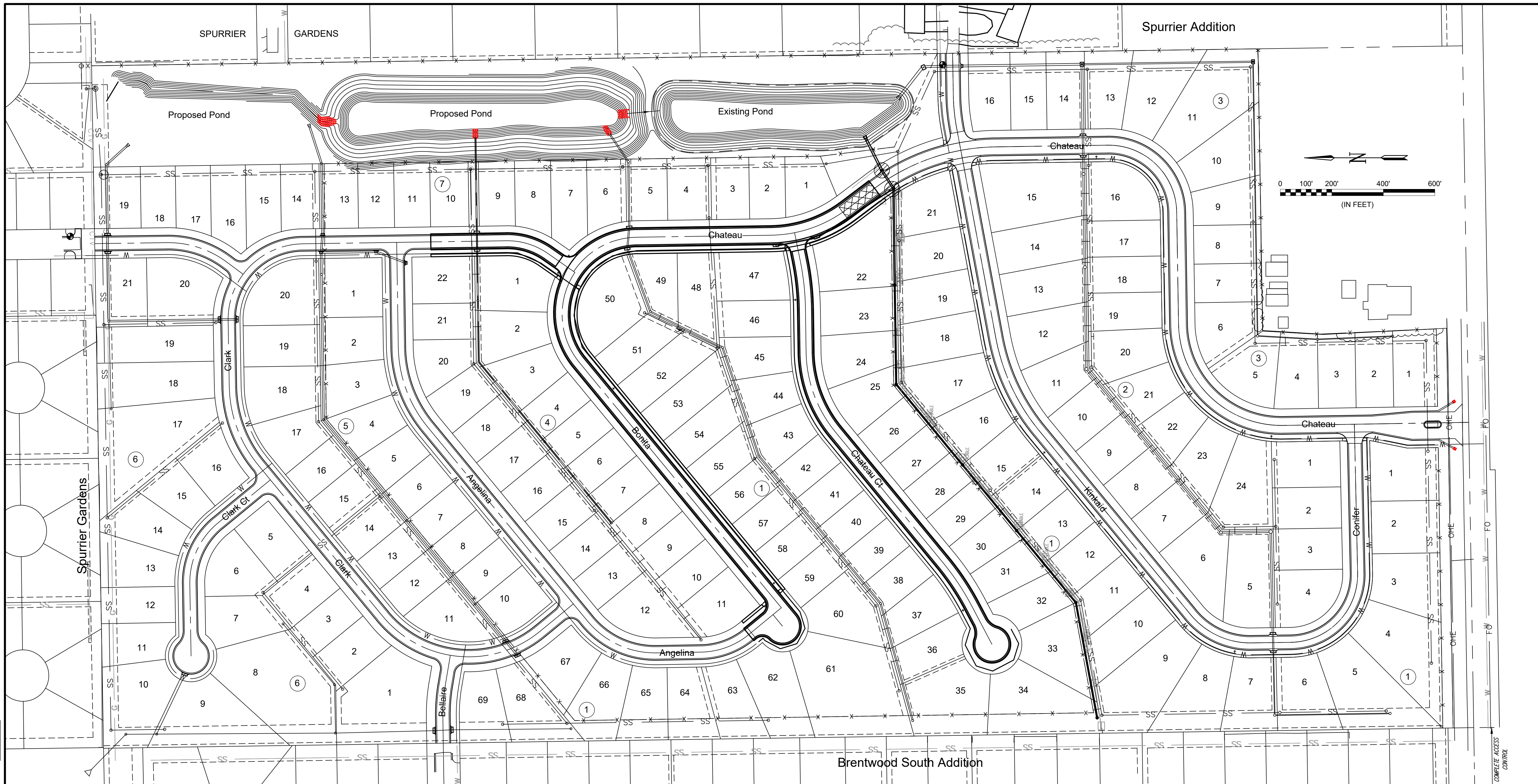
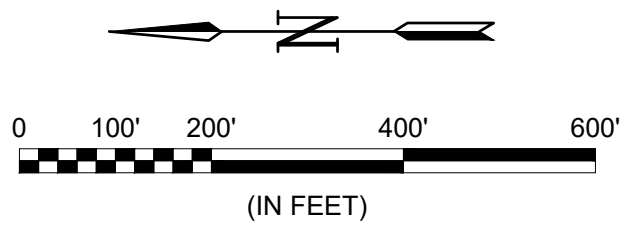


File: L:\2020\20741009 - Cedar Creek Phase 2\Drawings\C3D\Water Line\Erosion Control Plan.dwg Last Save: 3/14/2022 3:45 PM Last saved by: CDJurey  
 Last plotted by: Jurey, Caleb D. Plot Date: 4/18/2022 5:19 PM Plotter Used: None



- x — MAINTAIN Silt Fence (4502 L.F.)
- ▨ MAINTAIN Construction Entrance (1 Ea.)
- ⊙ MAINTAIN Inlet Protection (2 Ea.)

Spurrier Addition



**GARVER**  
 © 2022 GARVER, LLC  
 THIS DOCUMENT, ALONG WITH THE IDEAS AND DESIGNS CONVEYED HEREIN, SHALL BE CONSIDERED INSTRUMENTS OF PROFESSIONAL SERVICE AND ARE PROPERTY OF GARVER, LLC. ANY USE, REPRODUCTION, OR DISTRIBUTION OF THIS DOCUMENT, ALONG WITH THE IDEAS AND DESIGN CONTAINED HEREIN, IS PROHIBITED UNLESS AUTHORIZED IN WRITING BY GARVER, LLC OR EXPLICITLY ALLOWED IN THE GOVERNING PROFESSIONAL SERVICES AGREEMENT FOR THIS WORK.



REV.	DATE	DESCRIPTION	BY



CITY OF WICHITA  
 WICHITA, KANSAS  
 CEDAR CREEK ADD,  
 PHASE 2 - WATER LINE

Erosion Control Plan

JOB NO.: 20T41009  
 DATE: APR 2022  
 DESIGNED BY: CMB  
 DRAWN BY: MCP

BAR IS ONE INCH ON ORIGINAL DRAWING  
 IF NOT ONE INCH ON THIS SHEET, ADJUST SCALES ACCORDINGLY.

DRAWING NUMBER  
 SHEET NUMBER **11** OF **17**