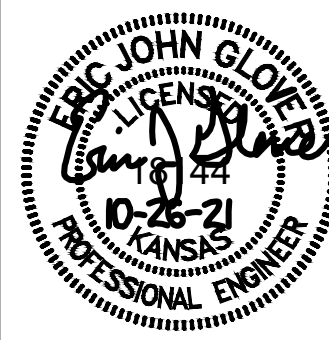




© 2021 GARVER, LLC
 THIS DOCUMENT, ALONG WITH THE IDEAS AND DESIGNS CONVEYED HEREIN, SHALL BE CONSIDERED INSTRUMENTS OF PROFESSIONAL SERVICE AND ARE PROPERTY OF GARVER, LLC. ANY USE, REPRODUCTION, OR DISTRIBUTION OF THIS DOCUMENT, ALONG WITH THE IDEAS AND DESIGN CONTAINED HEREIN, IS PROHIBITED UNLESS AUTHORIZED IN WRITING BY GARVER, LLC OR EXPLICITLY ALLOWED IN THE GOVERNING PROFESSIONAL SERVICES AGREEMENT FOR THIS WORK.

8535 E. 21st. St. N.
 Suite 130
 Wichita, KS 67206
 (316) 264-8008



REV.	DATE	DESCRIPTION	BY

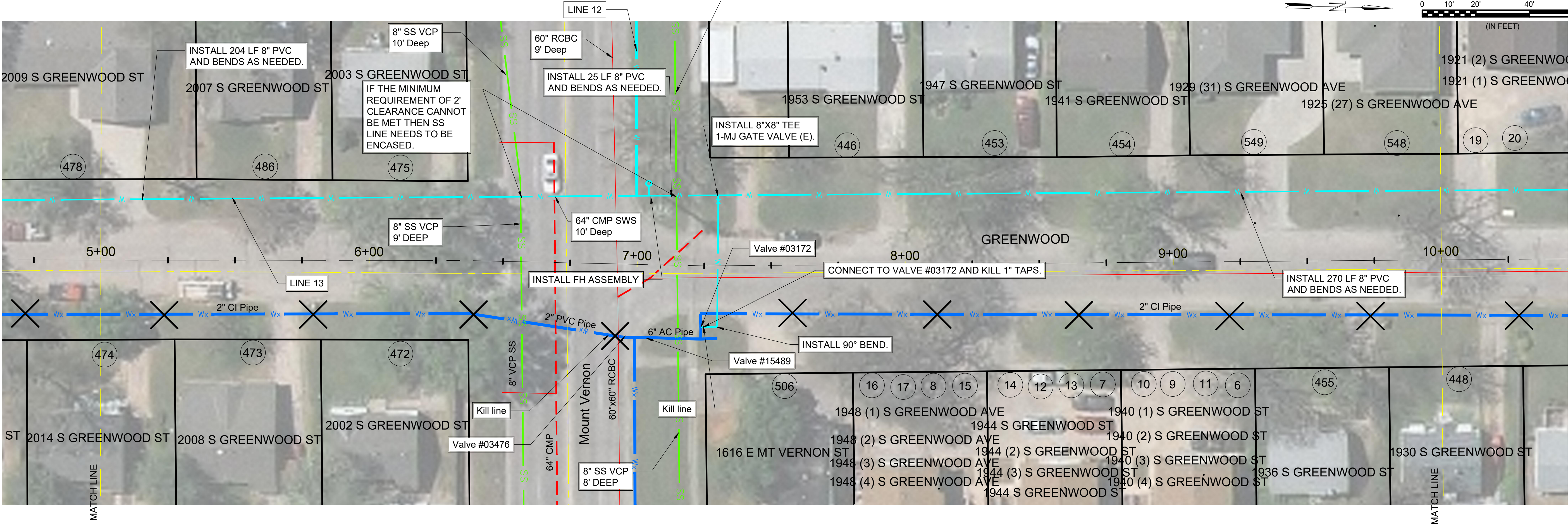
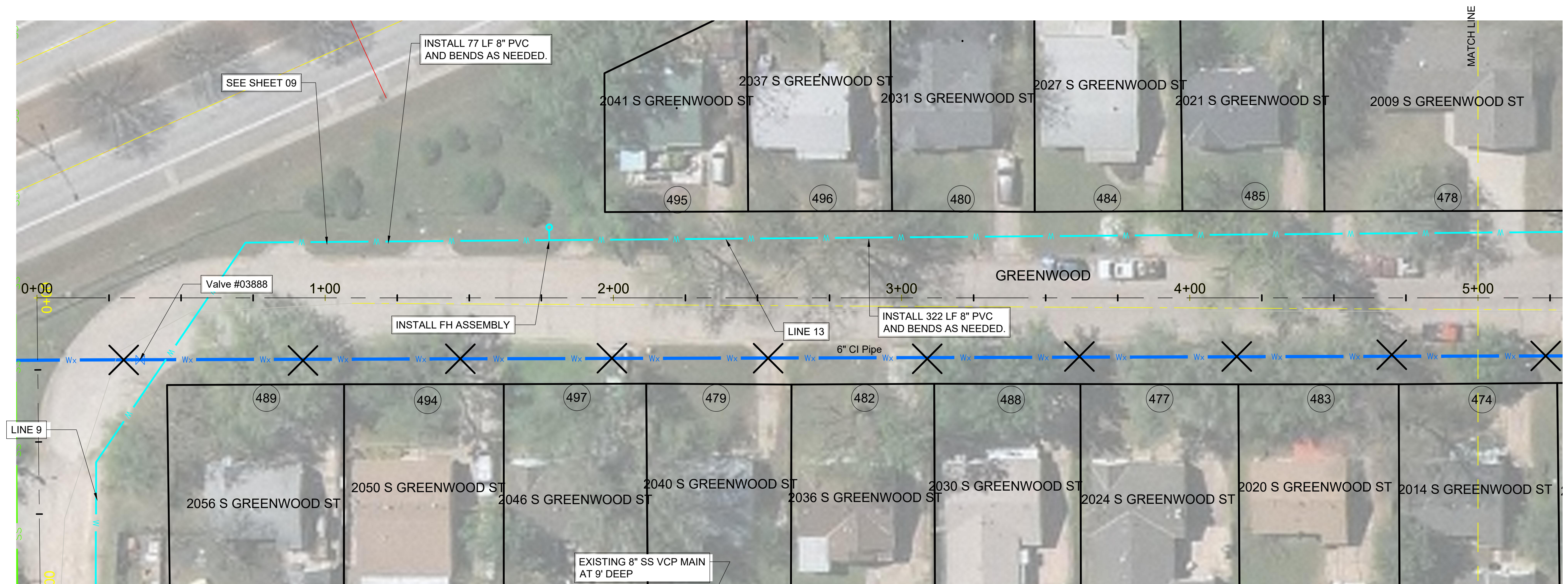


CITY OF WICHITA
 WICHITA, KANSAS
 K-15 Neighborhood
 Water Main Replacement

GREENWOOD AVE (1 of 4)

JOB NO.: 21T41001
 DATE: MARCH 2021
 DESIGNED BY: .
 DRAWN BY: .

BAR IS ONE INCH ON ORIGINAL DRAWING
 0 = 1" IF NOT ONE INCH ON THIS SHEET, ADJUST SCALES ACCORDINGLY.
 DRAWING NUMBER



File: L:\2021\12\14\1001 - K-15 Neighborhood WMRDrawings\C3D\Sheets\Group 2 - South of Harry\GREENWOOD AVE (1 of 4).dwg Last Save: 1/10/2022 2:30 PM Last saved by: E.J.Glover
 Last plotted by: Glover, Eric J. Plot Style: --- Plot Scale: 1:2,5849 Plot Date: 1/10/2022 3:27 PM Plotter used: None