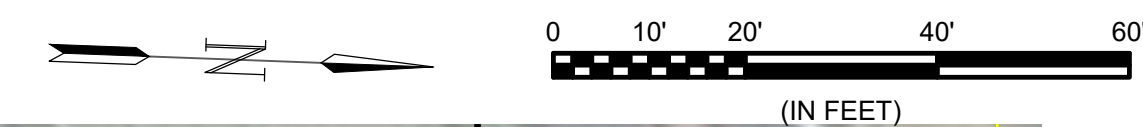
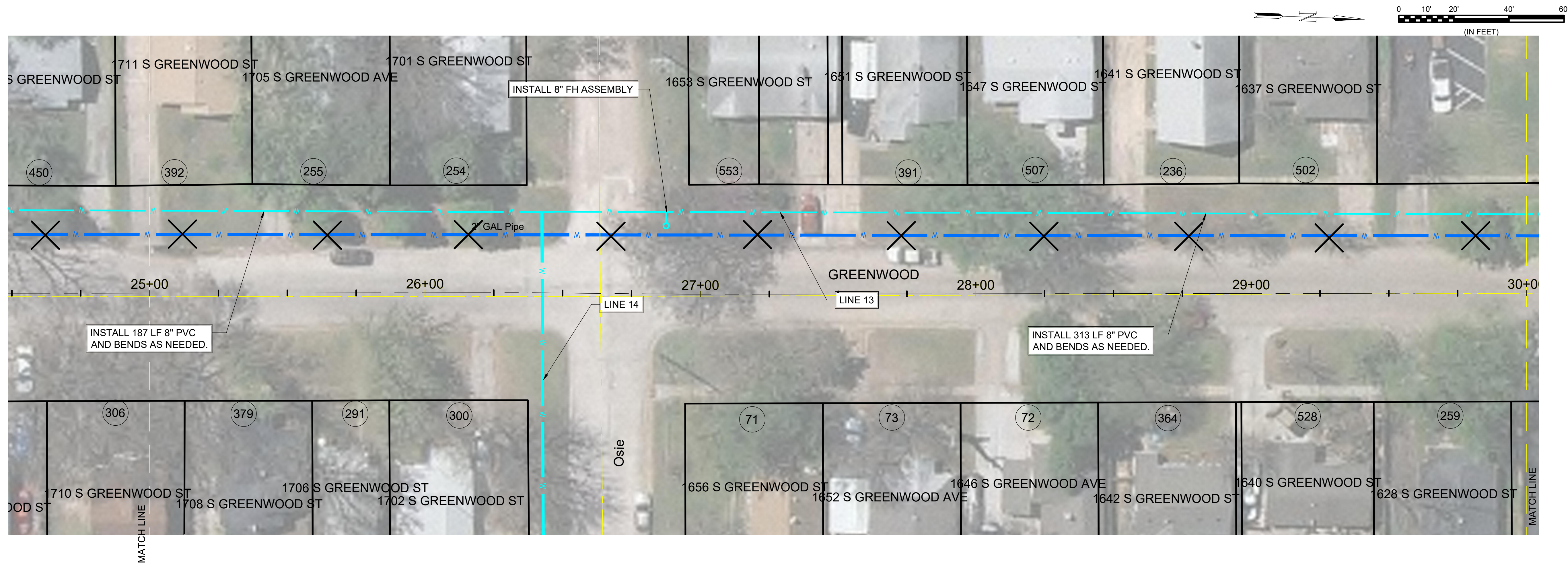
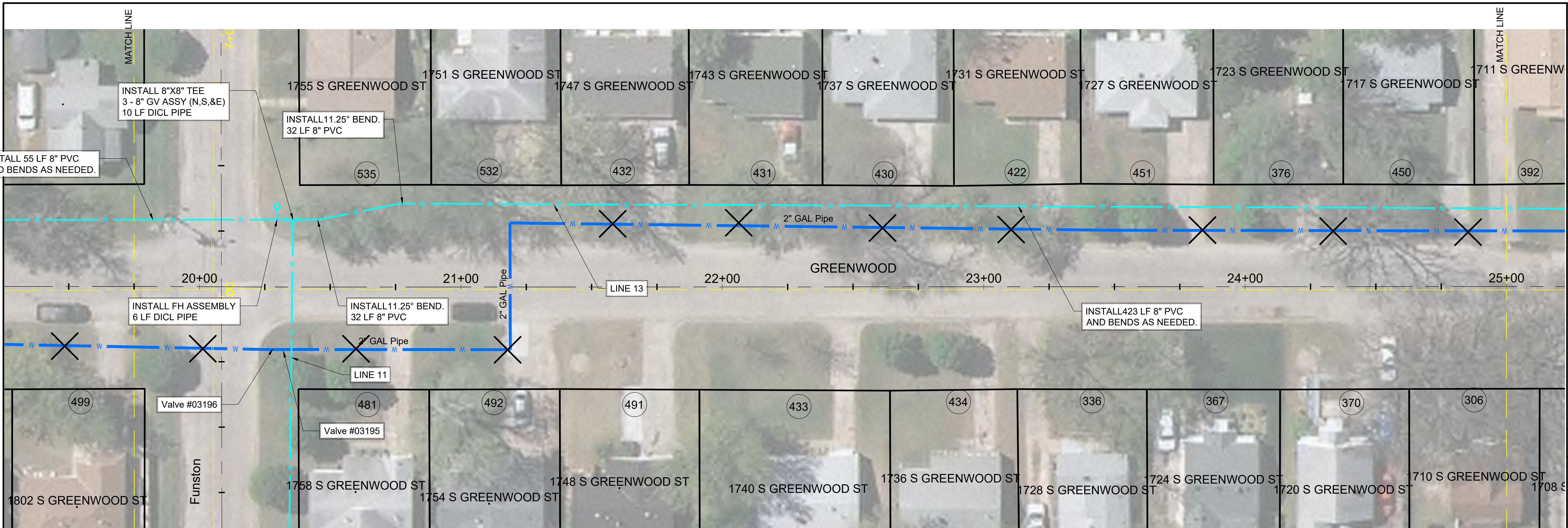



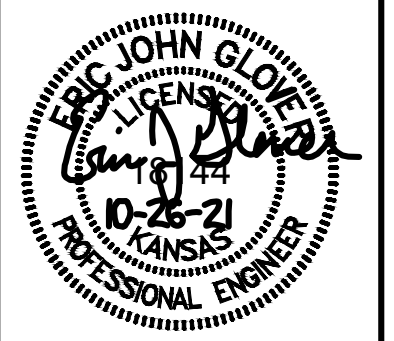
File: L:\2021\12\14\1001 - K-15 Neighborhood Water Drawings\C3D\Sheets\Group 2 - South of Harry\GREENWOOD AVE (3 of 7).dwg Last Save: 1/10/2022 2:31 PM Last saved by: EIGlover
 Last plotted by: Glover, Eric J. Plot Style: --- Plot Scale: 1:2,5849 Plot Date: 1/10/2022 3:28 PM Plotter used: None






© 2021 GARVER, LLC
 THIS DOCUMENT, ALONG WITH THE IDEAS AND DESIGNS CONVEYED HEREIN, SHALL BE CONSIDERED INSTRUMENTS OF PROFESSIONAL SERVICE AND ARE PROPERTY OF GARVER, LLC. ANY USE, REPRODUCTION, OR DISTRIBUTION OF THIS DOCUMENT, ALONG WITH THE IDEAS AND DESIGN CONTAINED HEREIN, IS PROHIBITED UNLESS AUTHORIZED IN WRITING BY GARVER, LLC OR EXPLICITLY ALLOWED IN THE GOVERNING PROFESSIONAL SERVICES AGREEMENT FOR THIS WORK.

8535 E. 21st. St. N.
 Suite 130
 Wichita, KS 67206
 (316) 264-8008



BY	DATE	DESCRIPTION



CITY OF WICHITA
 WICHITA, KANSAS

K-15 Neighborhood
 Water Main Replacement

GREENWOOD AVE (3 of 7)

JOB NO.: 21T41001
DATE: MARCH 2021
DESIGNED BY: .
DRAWN BY: .

BAR IS ONE INCH ON ORIGINAL DRAWING
 0 1" = 100'
 IF NOT ONE INCH ON THIS SHEET, ADJUST SCALES ACCORDINGLY.

DRAWING NUMBER

SHEET NUMBER **16** OF **30**