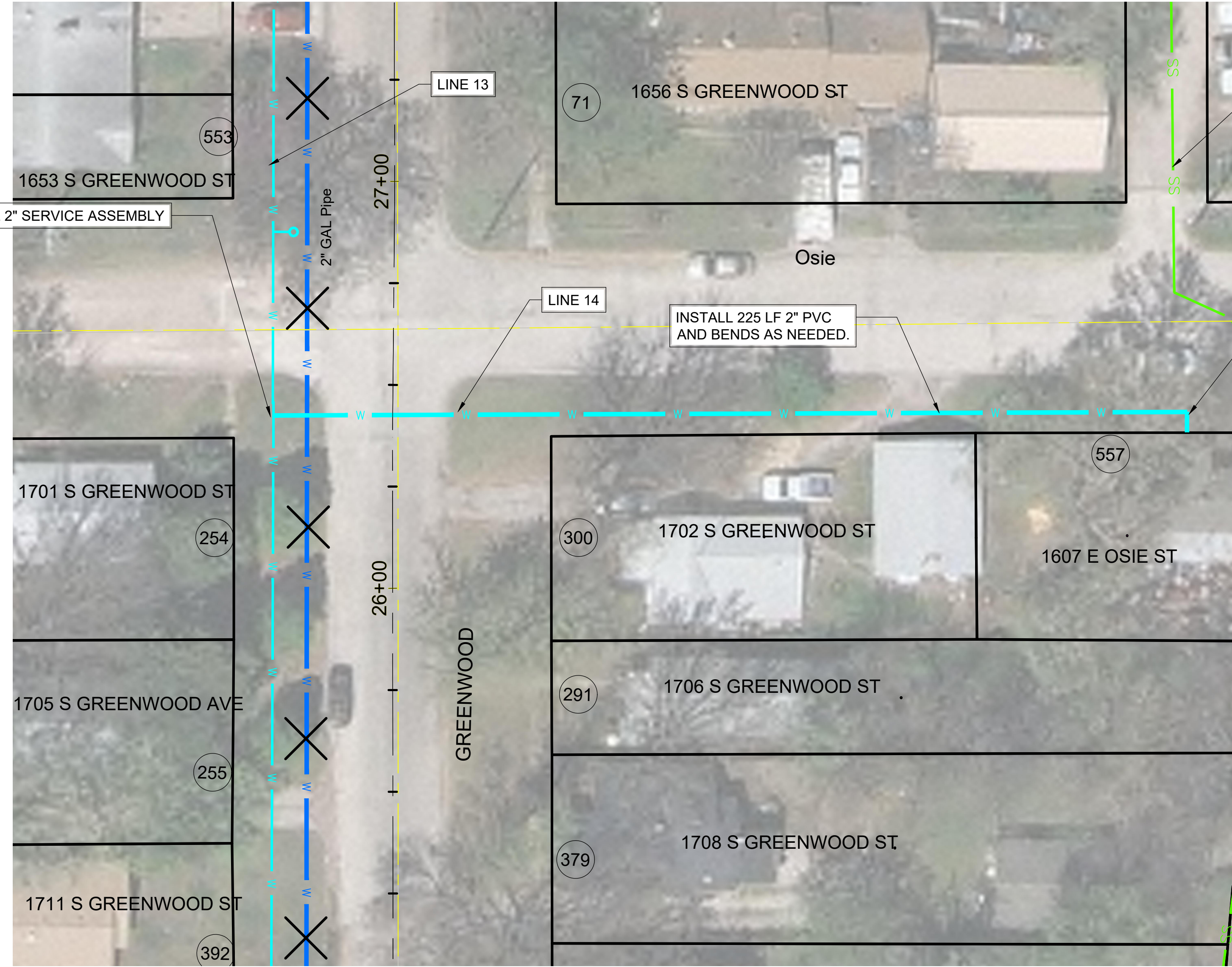


File: L:\2021\12\17\41001 - K-15 Neighborhood WMR\Drawings\C3D\Sheets\Group 2 - South of Harry\OSIE.dwg, Last Save: 1/10/2022 3:20 PM, Last saved by: E.J.Glover
 Last plotted by: Glover, Eric J., Plot Style: ---, Plot Scale: 1:2,5849, Plot Date: 1/10/2022 3:29 PM, Plotter used: None

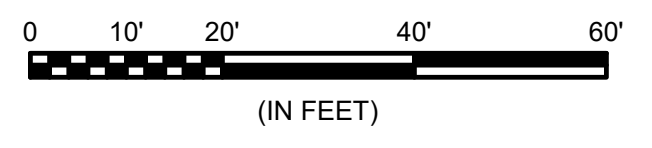


8" VCP SS
6' DEEP

INSTALL 2" SERVICE ASSEMBLY

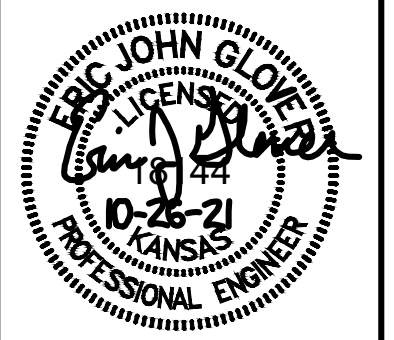
INSTALL 225 LF 2" PVC
AND BENDS AS NEEDED.

INSTALL 2" BLOWOFF ASSEMBLY



© 2021 GARVER, LLC
 THIS DOCUMENT, ALONG WITH THE
 IDEAS AND DESIGNS CONVEYED
 HEREIN, SHALL BE CONSIDERED
 INSTRUMENTS OF PROFESSIONAL
 SERVICE AND ARE PROPERTY OF
 GARVER, LLC. ANY USE,
 REPRODUCTION, OR DISTRIBUTION
 OF THIS DOCUMENT, ALONG WITH
 THE IDEAS AND DESIGN CONTAINED
 HEREIN, IS PROHIBITED UNLESS
 AUTHORIZED IN WRITING BY
 GARVER, LLC OR EXPLICITLY
 ALLOWED IN THE GOVERNING
 PROFESSIONAL SERVICES
 AGREEMENT FOR THIS WORK.

8535 E. 21st. St. N.
 Suite 130
 Wichita, KS 67206
 (316) 264-8008



REV.	DATE	DESCRIPTION	BY



CITY OF WICHITA
 WICHITA, KANSAS
 K-15 Neighborhood
 Water Main Replacement

OSIE

JOB NO.: 21T41001
 DATE: MARCH 2021
 DESIGNED BY: .
 DRAWN BY: .

BAR IS ONE INCH ON
 ORIGINAL DRAWING
 0 1"
 IF NOT ONE INCH ON THIS SHEET,
 ADJUST SCALES ACCORDINGLY.

DRAWING NUMBER

SHEET
 NUMBER 18 OF 30