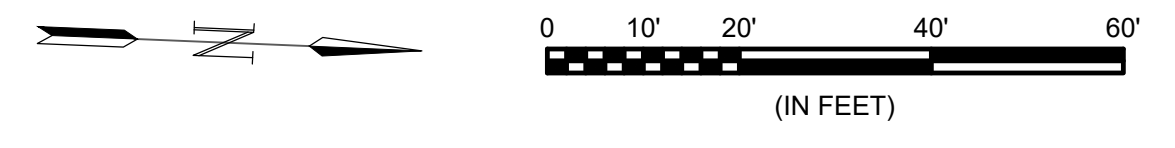
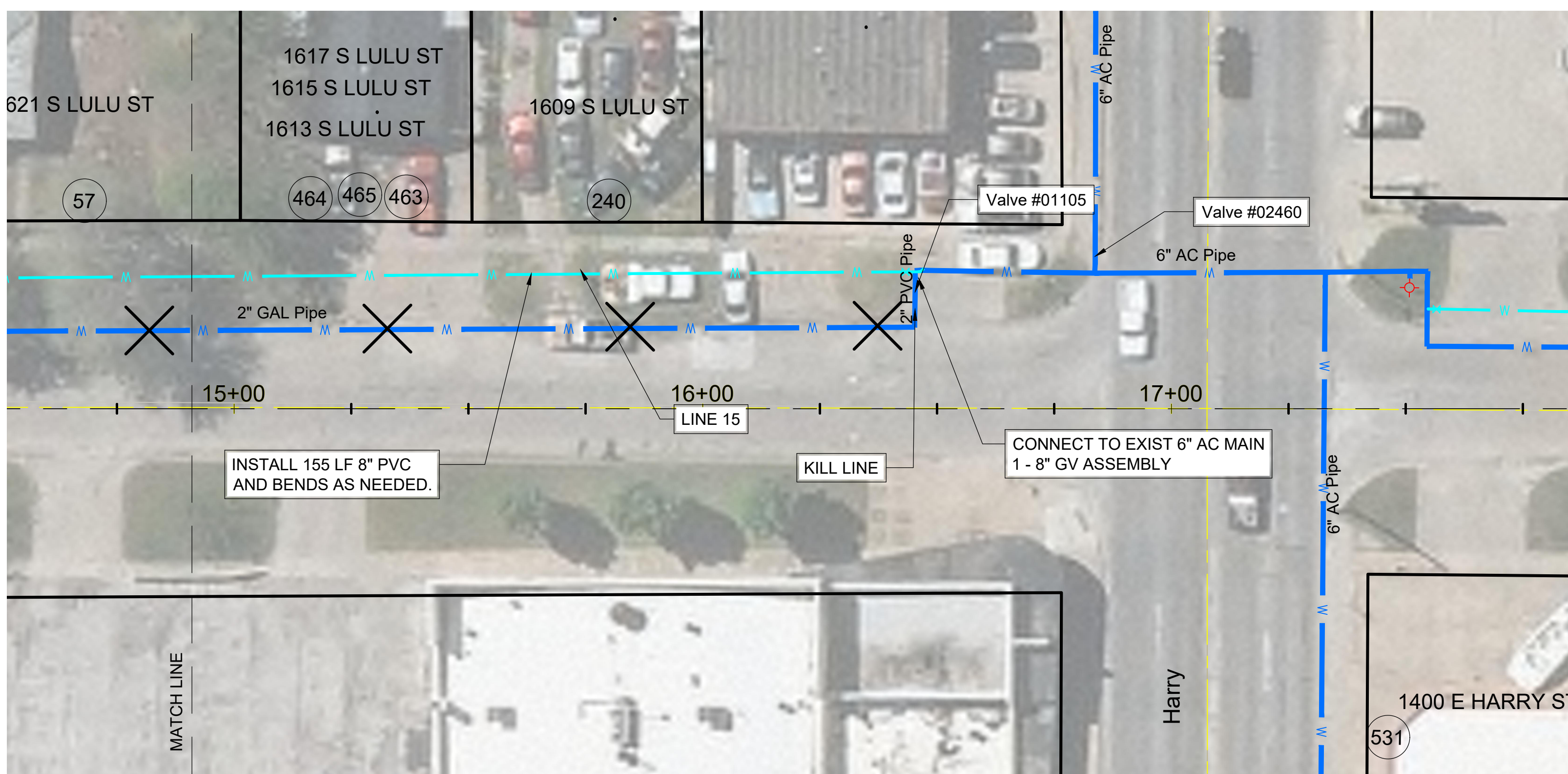
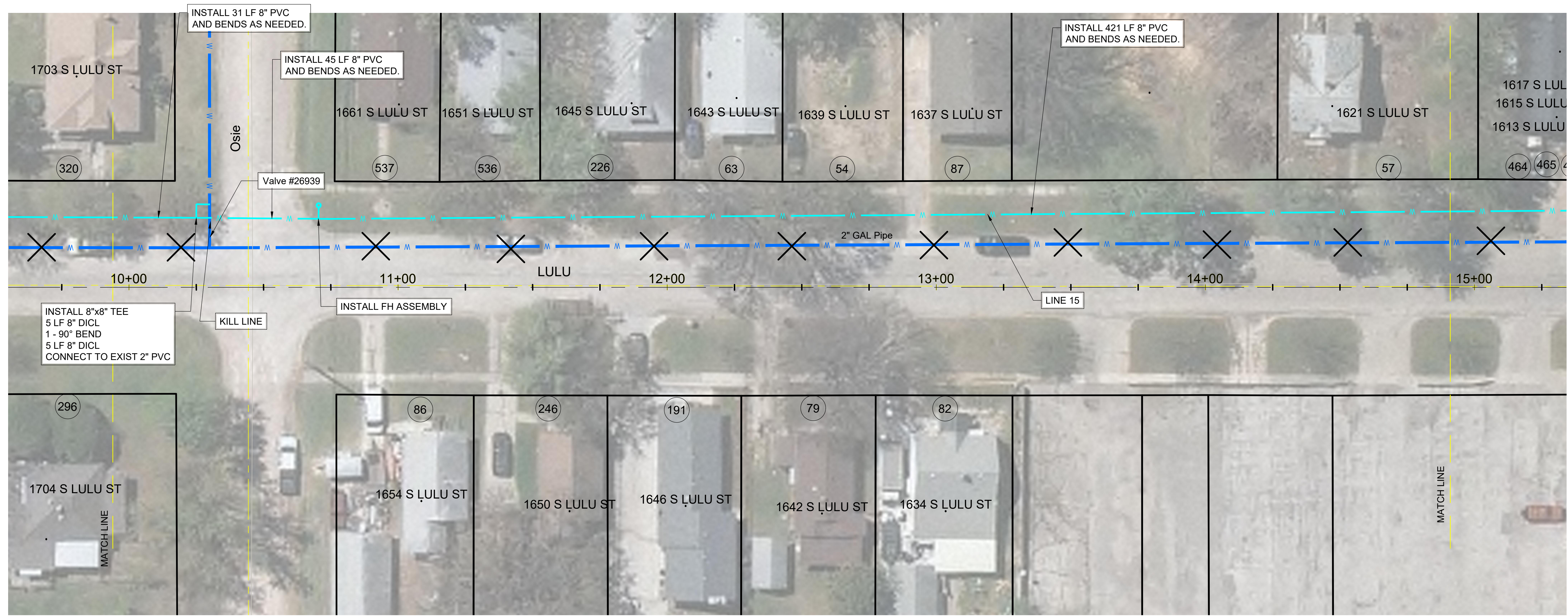
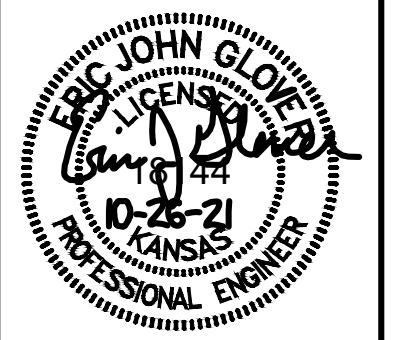


File: L:\2021\12\14\1001 - K-15 Neighborhood WMRDrawings\C3D\Sheets\Group 2 - South of Harry\LULU AVE (3 of 7).dwg Last Save: 1/10/2022 2:48 PM Last saved by: E.J.Glover  
 Last plotted by: Glover, Eric J. Plot Style: --- Plot Style: 1:2.5849 Plot Date: 1/10/2022 3:31 PM Pcloter used: None



© 2021 GARVER, LLC  
 THIS DOCUMENT, ALONG WITH THE IDEAS AND DESIGNS CONVEYED HEREIN, SHALL BE CONSIDERED INSTRUMENTS OF PROFESSIONAL SERVICE AND ARE PROPERTY OF GARVER, LLC. ANY USE, REPRODUCTION, OR DISTRIBUTION OF THIS DOCUMENT, ALONG WITH THE IDEAS AND DESIGN CONTAINED HEREIN, IS PROHIBITED UNLESS AUTHORIZED IN WRITING BY GARVER, LLC OR EXPLICITLY ALLOWED IN THE GOVERNING PROFESSIONAL SERVICES AGREEMENT FOR THIS WORK.

8535 E. 21st. St. N.  
 Suite 130  
 Wichita, KS 67206  
 (316) 264-8008



REV.	DATE	DESCRIPTION	BY



CITY OF WICHITA  
 WICHITA, KANSAS  
 K-15 Neighborhood  
 Water Main Replacement

LULU AVE  
 (3 of 7)

JOB NO.: 21T41001  
 DATE: MARCH 2021  
 DESIGNED BY: .  
 DRAWN BY: .

BAR IS ONE INCH ON ORIGINAL DRAWING  
 0 1" IF NOT ONE INCH ON THIS SHEET, ADJUST SCALES ACCORDINGLY.

DRAWING NUMBER

SHEET NUMBER **21** OF **30**