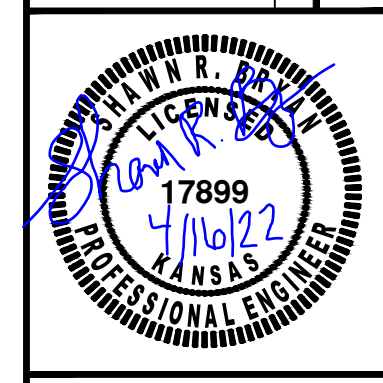


0	4-15-22	INITIAL ISSUE	SRB	JT	KS
		DESCRIPTION	DSN	DWN	CHK



SHAWN R. BRYAN
ENGINEER
KS # 17899

200 N. EMPORIA, SUITE 100
WICHITA, KANSAS 67202
PH. (316) 440-4304 | FAX (316) 440-4309
www.kveeng.com | wh@kveeng.com

KAW VALLEY ENGINEERING

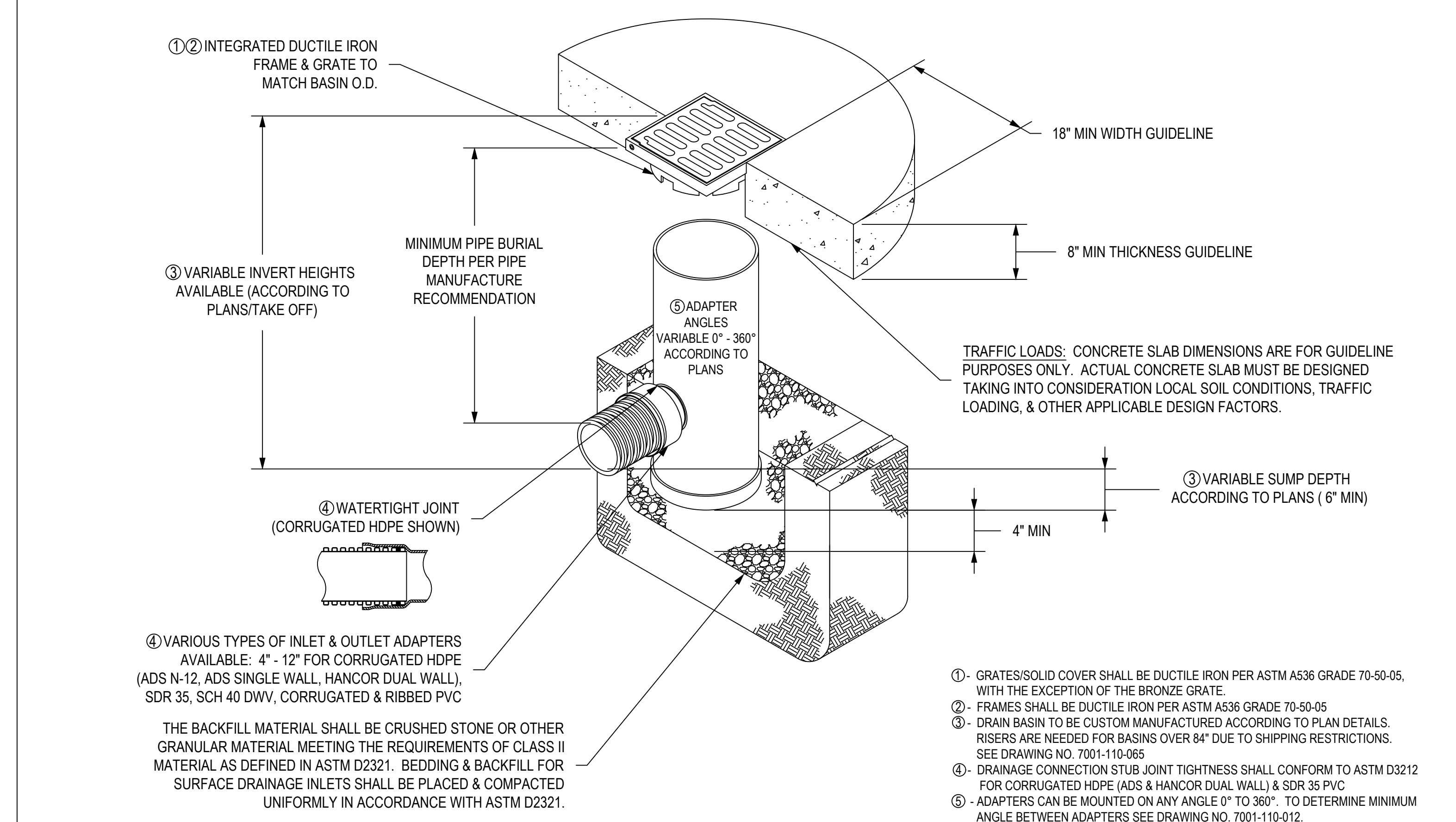
KAW VALLEY ENGINEERING, INC. IS AUTHORIZED TO OFFER ENGINEERING SERVICES BY KANSAS STATE CERTIFICATE OF AUTHORIZATION # E-113. EXPIRES 12/31/22

SYCAMORE POND ADDITION
W 50TH STREET S & S OSAGE CIRCLE
WICHITA, KANSAS

PHASE II - STORM SEWER IMPROVEMENTS
DETAIL SHEET

PROJ. NO.	G19-1259
DESIGNER	TRA
DRAWN BY	JT
CFN	1259-1D_DET
SHEET	15A
REV	0

NYLOPLAST 12" DRAIN BASIN: 2812AG __ X



GRATE OPTIONS	LOAD RATING	PART #	DRAWING #
PEDESTRIAN	MEETS H-10	1299CGP	7001-110-202
STANDARD	MEETS H-20	1299CGS	7001-110-203
SOLID COVER	MEETS H-20	1299CGC	7001-110-204
PEDESTRIAN BRONZE	LIGHT DUTY	1299CGPB	7001-110-205
DOME	N/A	1299CGD	7001-110-206
DROP IN GRATE	LIGHT DUTY	1201DI	7001-110-021

THIS PRINT DISCLOSES SUBJECT MATTER IN WHICH NYLOPLAST HAS PROPRIETARY RIGHTS. THE RECEIPT OR POSSESSION OF THIS PRINT DOES NOT CONFER, TRANSFER, OR LICENSE THE USE OF THE DESIGN OR TECHNICAL INFORMATION SHOWN HEREIN REPRODUCTION OF THIS PRINT OR ANY INFORMATION CONTAINED HEREIN, OR MANUFACTURE OF ANY ARTICLE HEREFROM, FOR THE DISCLOSURE TO OTHERS IS FORBIDDEN, EXCEPT BY SPECIFIC WRITTEN PERMISSION FROM NYLOPLAST.

DRAWN BY	EBC	MATERIAL	3130 VERONA AVE BUFORD, GA 30518 PHN (770) 932-2443 FAX (770) 932-2490 www.nyloplast-us.com
DATE	3-29-06	PROJECT NO./NAME	
APPD BY	CJA	TITLE	12 IN DRAIN BASIN QUICK SPEC INSTALLATION DETAIL
DATE	3-29-06	DWG NO.	7001-110-189
DWG SIZE	A	SCALE	1:20
		SHEET	1 OF 1
		REV	B