

State of Kansas) SS
Sedgwick County)

We, Ruggles & Bohm, P.A., Land Surveyors in aforesaid county and state, do hereby certify that, under the supervision of the undersigned, we have surveyed and platted "SYCAMORE POND", Wichita, Sedgwick County, Kansas, and that the accompanying plat is a true and correct exhibit of the property surveyed, described as follows:

A replat of Angel Acres 2nd Addition to Wichita, Sedgwick County, Kansas, EXCEPT Block 3, AND EXCEPT Gold lying south of the north right-of-way line of 50th Street South, together with the N1/2, N1/2, S1/2, NW1/4, Section 20, T28S, R1E of the 6th P.M., Sedgwick County, Kansas.

All public easements and dedications are hereby vacated by virtue of K.S.A. 12-512(b).

Ruggles & Bohm, P.A.

James D. Hestermann Land Surveyor
James D. Hestermann

Know all men by these presents that we, the undersigned, have caused the land described in the surveyor's certificate to be platted into Lots, Blocks, a Reserve and Streets to be known as "SYCAMORE POND", Wichita, Sedgwick County, Kansas. Access Controls as indicated are hereby granted to the appropriate governing body. The streets are hereby dedicated to and for the use of the public. Utility Easements are hereby granted for the construction and maintenance of all public utilities. Drainage Easements are hereby granted to the public as indicated for drainage purposes. Reserve "A" is hereby reserve for irrigation, walls, signage, gazebos, playground, structures, picnic areas/ tables with canopies, walks, lighting, landscaping, berms, lakes, drainage, drainage structures and utilities confined to easements. The Reserve shall be owned and maintained by the Home Owners Association for the addition. A drainage plan has been developed for this plat; the property shall remain at established grades, or as modified with the approval of the City Engineer, and unobstructed to allow for the conveyance of storm water.

Castlewood Homes, Inc.

W. Douglas Long President

SYCAMORE POND

An Addition to Wichita, Sedgwick County, Kansas

State of Kansas)
Sedgwick County)

The foregoing instrument acknowledged before me, this 20th day of April, 2006, by Doug Long, President, on behalf of Castlewood Homes, Inc.

Mildred E. Franz Notary Public
Mildred E. Franz
My appointment expires 02-13-2007

We the undersigned, holders of a mortgage on a portion of the above described property, do hereby consent to this plat of "SYCAMORE POND" Wichita, Sedgwick County, Kansas.

Richard Ciemmy President
Richard Ciemmy

BLOCK	LOT NO.	ELEVATION (N.G.V.D.)
1	1, 2, 3, 4, 5, 6, 7, 8, 9, 10, 11, 13, 14, 15, 16, 17	1289.9

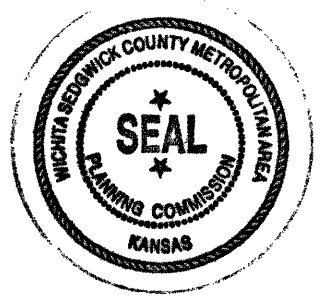
State of Kansas)
Sedgwick County)

The foregoing instrument acknowledged before me this 24th day of April, 2006, by Richard Ciemmy, President of First National Bank of Anthony, on behalf of the Bank.

Murla K. Crossman, Notary Public
Murla K. Crossman
My appointment expires 4/20/2010

This plat of "SYCAMORE POND", Wichita, Sedgwick County, Kansas, has been submitted to and approved by the Wichita-Sedgwick County Metropolitan Area Planning Commission, Wichita, Kansas.

Dated this 6th day of April, 2006.
Wichita-Sedgwick County Metropolitan Area Planning Commission
Harold Warner, Jr. Chair
John L. Schlegel Secretary



This plat approved and all dedications shown hereon accepted by the City Council of the City of Wichita, Kansas, this 8 day of July 2006.

At the Direction of the City Council
Carlos Mayor Mayor
Karen Sublett City Clerk
Karen Sublett

Reviewed in accordance with K.S.A. 12-58-2005 on this 9th day of May, 2006
Teresa Rabe Deputy County Surveyor
Sedgwick County Kansas

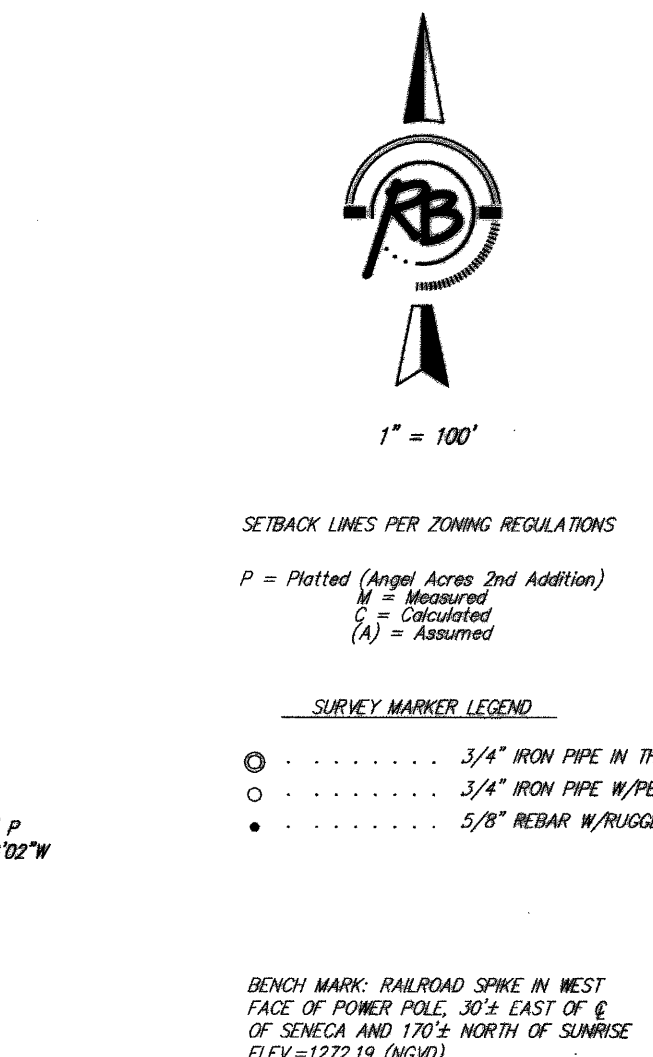
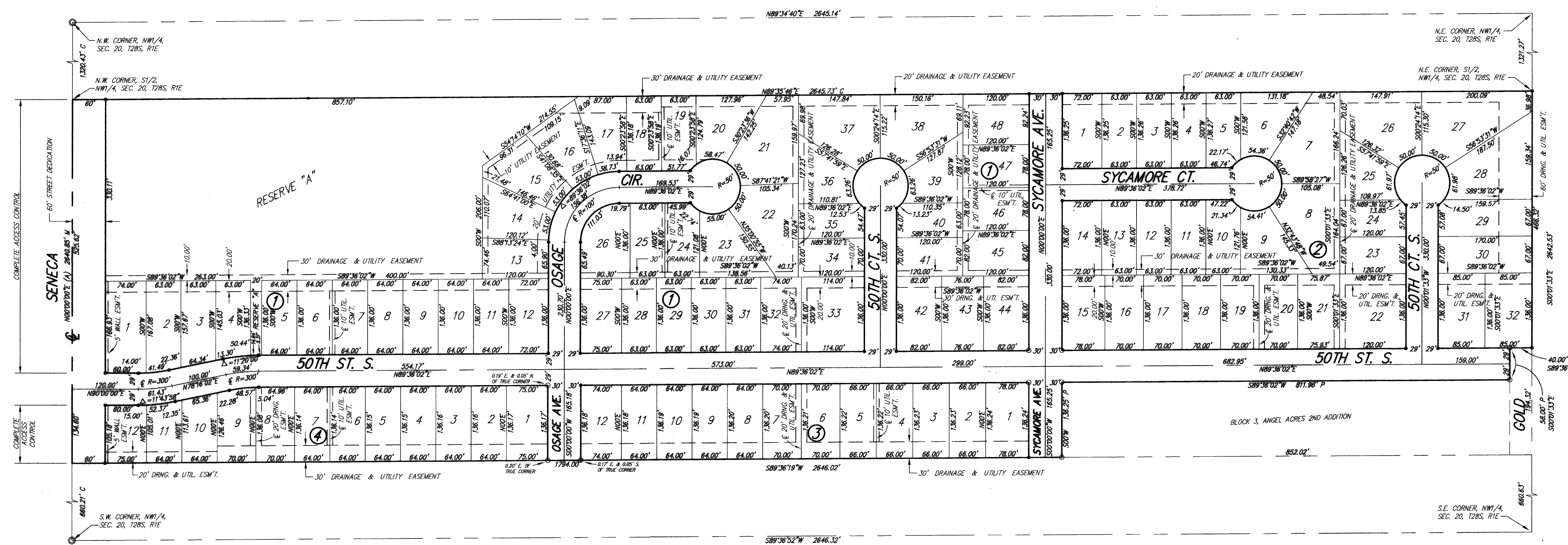
Entered on transfer record this 6th day of July, 2006.
Don Brace County Clerk

State of Kansas)
Sedgwick County)

This is to certify that this plat has been filed for record in the office of the Register of Deeds, this 6th day of July, 2006, at 11:16 o'clock A.M. and is duly recorded.

Bill Meek Register of Deeds
Tonya Buckingham Deputy

Sedgwick County Register of Deeds
DOC #/FLM-PG: 28796224
Date Recorded: 7/6/2006 11:16:10 AM



Ruggles & Bohm, P.A.
Engineering, Surveying, Land Planning
924 North Main (316) 264-0008
Wichita, Kansas 67203 (316) 264-4621 fax
www.rbkansas.com E-mail: info@rbkansas.com

DWG FILE: SURVEY BASE
PROJECT NO: 2796P
APRIL 19, 2006