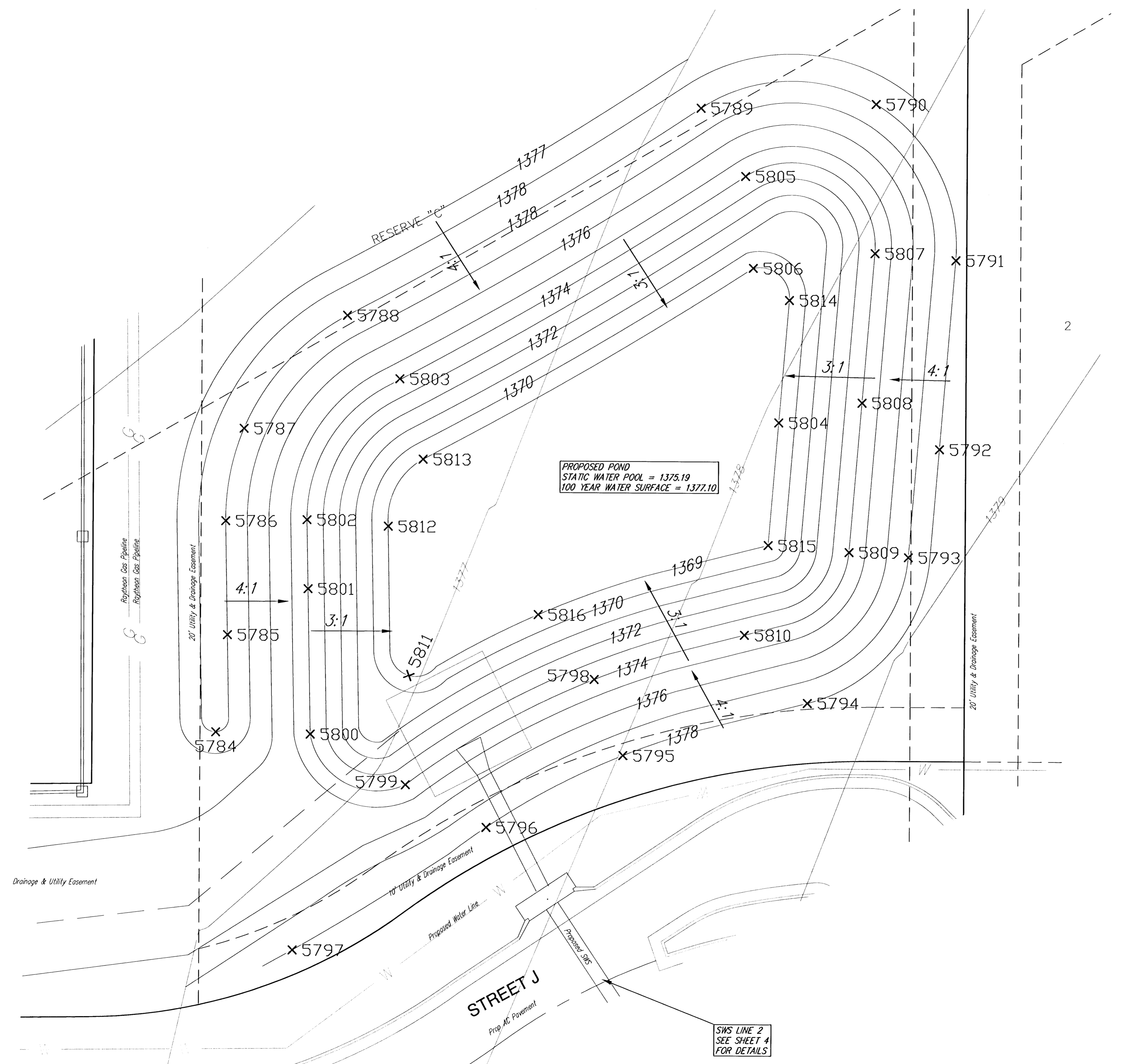




SCALE 1" = 10'
IRON = •

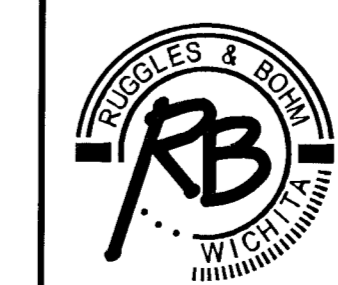


PROPOSED POND
STATIC WATER POOL = 1375.19
100 YEAR WATER SURFACE = 1377.10

Point	Northing	Easting	ELEV
5784	19873.84	19513.00	1378.00
5785	19891.78	19515.08	1378.00
5786	19912.81	19514.64	1378.00
5787	19929.83	19517.94	1378.00
5788	19950.79	19536.92	1378.00
5789	19989.33	19602.07	1378.00
5790	19990.21	19634.42	1378.00
5791	19961.49	19649.31	1378.00
5792	19926.62	19646.46	1378.00
5793	19908.68	19640.82	1378.00
5794	19879.73	19622.31	1378.00
5795	19869.91	19588.27	1378.00
5796	19856.52	19563.06	1378.00
5797	19833.69	19527.34	1378.00
5798	19884.92	19582.91	1374.00
5799	19884.25	19548.09	1374.00
5800	19871.51	19530.46	1374.00
5801	19900.32	19529.90	1374.00
5802	19813.07	19529.64	1374.00
5803	19839.14	19548.87	1374.00
5804	19831.40	19616.75	1369.00
5805	19878.84	19610.38	1374.00
5806	19859.88	19611.89	1369.00
5807	19862.71	19634.36	1374.00
5808	19835.15	19632.11	1374.00
5809	19907.58	19629.85	1374.00
5810	19892.23	19610.62	1374.00
5811	19884.43	19548.63	1369.00
5812	19911.95	19544.66	1369.00
5813	19924.32	19551.05	1369.00
5814	19954.00	19618.60	1369.00
5815	19908.80	19614.90	1369.00
5816	19895.81	19572.48	1369.00

NOTE: THE POND BOTTOM AND SIDES ARE TO BE SCARIFIED A MINIMUM OF 8 INCHES, MOISTURE CONDITIONED AND RECOMPACTED TO A MINIMUM OF 95 PERCENT OF STANDARD PROCTOR DENSITY (ASTM D-698) FROM MINUS 3 TO PLUS 3 PERCENT OF OPTIMUM MOISTURE CONTENT. ADDITIONALLY, ALL GYPSUM/CALICHE SEAMS, SANDY CLAY AND CLAY SHALE ENCOUNTERED SHOULD BE OVER-EXCAVATED A MINIMUM OF 1 FOOT AND REPLACED WITH CLAY.

MAPLE SHADE ADDITION
POND PLAN
WICHITA, KANSAS



Ruggles & Bohm, P.A.
Engineering, Surveying, Land Planning
924 North Main
Wichita, Kansas 67203
www.rbkansas.com
(316) 264-8008
(316) 264-4621 fax
E-mail: info@rbkansas.com

DESIGN	EJG	SHEET 4 OF 10		
DRAWN	EJG			
REVIEW				
UTILITY				
DRAWING FILE	SWD [CONTOURS]	PROJECT NUMBER	DATE	May 6, 2005

SWI LINE 2
SEE SHEET 4
FOR DETAILS