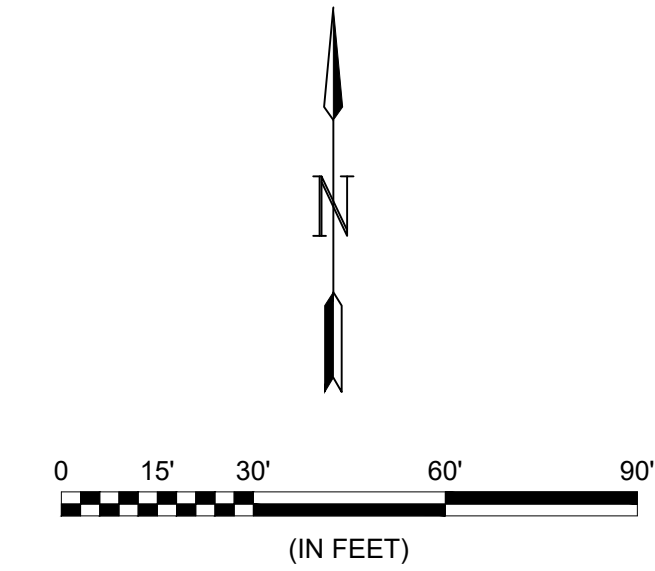
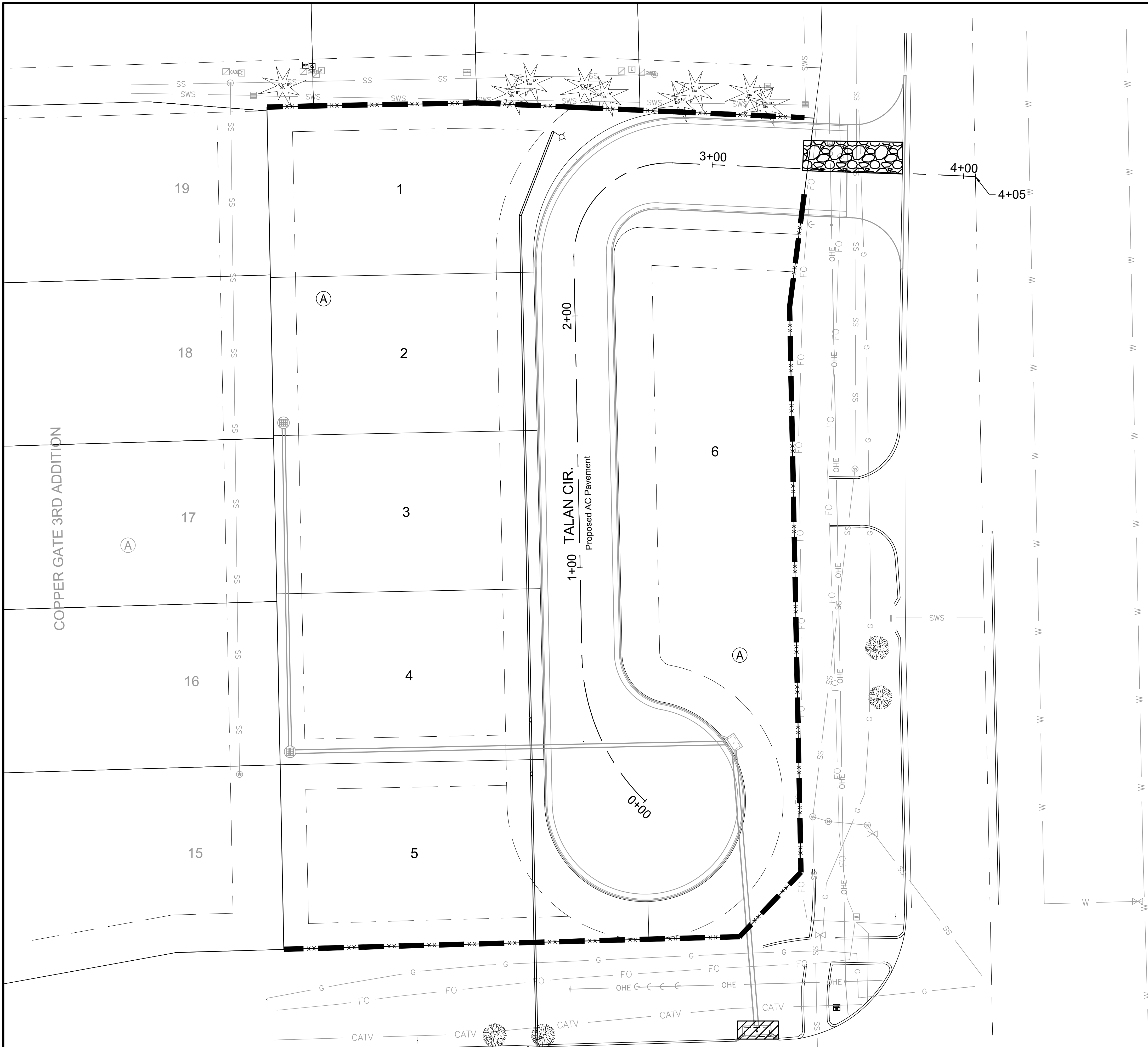

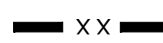




File: L:\2021\12\14\1010 - Copper Creek Addition\Drawings\C3DWATEREROSION CONTROL.dwg Last Save: 5/9/2022 10:35 AM Last saved by: MCarraPiedra  
 Last plotted by: Carraera-Piedra, Mairala Plot Date: 5/23/2022 8:59 AM Plotter used: None



**LEGEND**

-  INSTALL CONSTRUCTION ENTRANCE ( 1 EACH )
-  INSTALL SILT FENCE ( 705 LF )
-  INSTALL INLET PROTECTION ( 1 EACH )



© 2022 GARVER, LLC  
 THIS DOCUMENT, ALONG WITH THE IDEAS AND DESIGNS CONVEYED HEREIN, SHALL BE CONSIDERED INSTRUMENTS OF PROFESSIONAL SERVICE AND ARE PROPERTY OF GARVER, LLC. ANY USE, REPRODUCTION, OR DISTRIBUTION OF THIS DOCUMENT, ALONG WITH THE IDEAS AND DESIGN CONTAINED HEREIN, IS PROHIBITED UNLESS AUTHORIZED IN WRITING BY GARVER, LLC OR EXPLICITLY ALLOWED IN THE GOVERNING PROFESSIONAL SERVICES AGREEMENT FOR THIS WORK.

1995 Midfield Road  
 Wichita, KS 67209  
 (316) 264-8008

REV.	DATE	DESCRIPTION	BY



CITY OF WICHITA  
 WICHITA, KANSAS  
 COOPER CREEK ADD.  
 WATER

**EROSION CONTROL**

JOB NO.: 21T41010  
 DATE: MAY 2022  
 DESIGNED BY: KWL  
 DRAWN BY: MCP

BAR IS ONE INCH ON ORIGINAL DRAWING  
 IF NOT ONE INCH ON THIS SHEET, ADJUST SCALES ACCORDINGLY.

DRAWING NUMBER