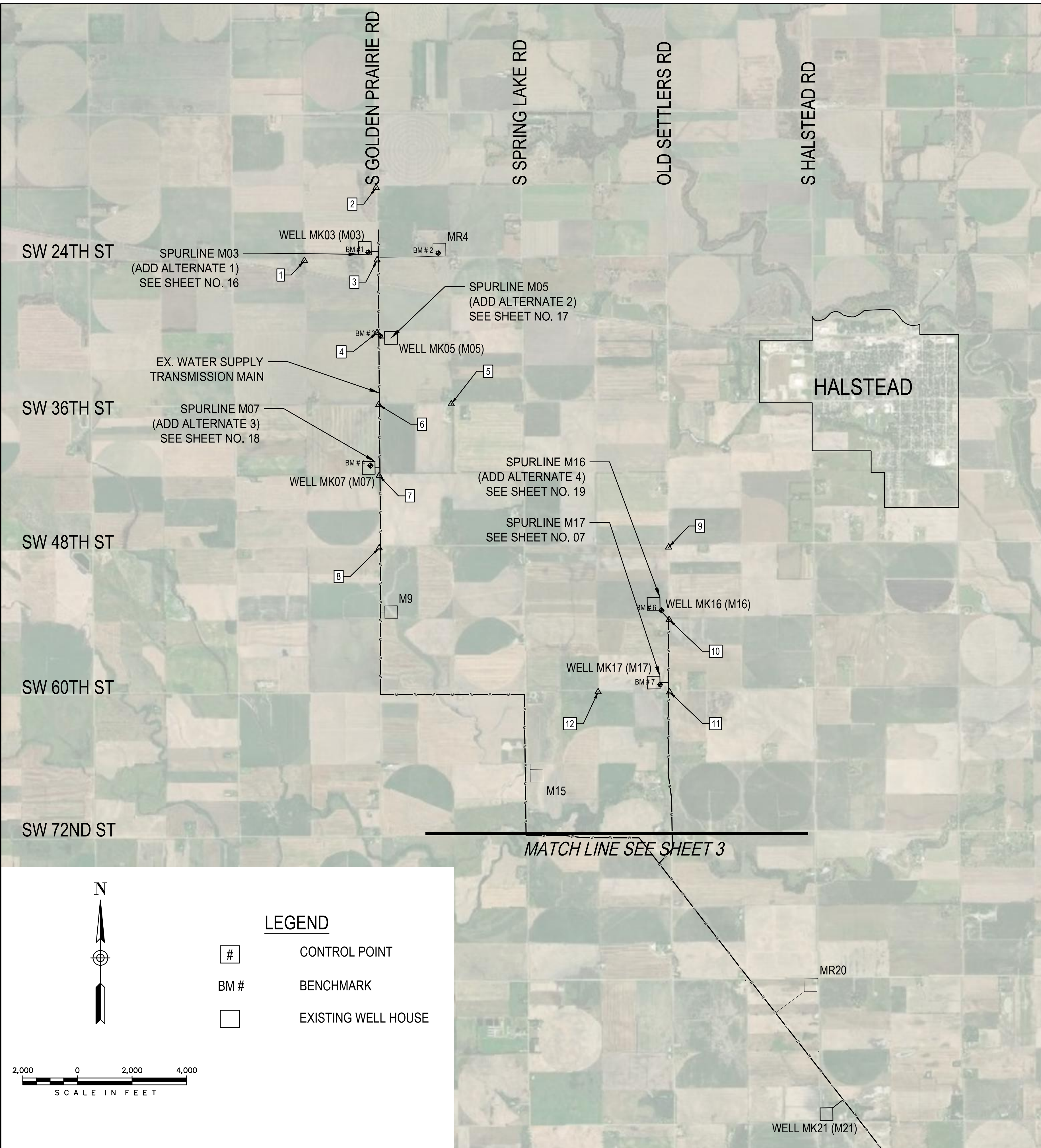


Last saved by: alex.mckean Plotted By: Mckean, Alex Plot Date/Time: 5/24/2022 1:23 PM  
 File: L:\8275000373 Wichita Spurline\05\_CAD\Sheets\Bld\_Package\_3\_KM-03.dwg



**LEGEND**

# CONTROL POINT

BM # BENCHMARK

□ EXISTING WELL HOUSE

SCALE IN FEET

**HORIZONTAL CONTROL POINTS**

1. SOUTH QUARTER SECTION CORNER SECTION: 30 TOWNSHIP: 23S RANGE: 02W  
 STATE PLANE COOR. SYS NORTH: 1804282.16 EAST: 1576500.14  
 1" SQUARE BAR  
 R1: N 01°20'51" E 31.56 FEET TO 1/2" SQUARE BAR  
 R2: N 01°34'33" W 29.71 FEET TO NAIL IN TOP OF 6" CORNER FENCE POST  
 R3: S 00°52'12" E 26.49 FEET TO NAIL IN TOP OF 6" POST  
 R4: S 48°30'56" W 45.53 FEET TO 2 NAILS IN NORTH FACE 18" CEDAR TREE  
 R5: N 80°38'15" W 60.86 FEET TO THE SOUTHEAST CORNER CONCRETE FOOT BRIDGE
2. EAST QUARTER SECTION CORNER SECTION: 30 TOWNSHIP: 23S RANGE: 02W  
 STATE PLANE COOR. SYS NORTH: 1806858.71 EAST: 1579123.18  
 FOUND 1.5" O.D IRON PIPE  
 R1: S 88°08'11" E 40.65 FEET CENTER 3" STEEL CORNER FENCE POST  
 R2: S 39°52'24" E 63.78 FEET TO CENTER OF SOUTHERLY 3" STEEL GATE POST  
 R3: S 11°31'07" W 128.77 FEET 40D NAIL AND WASHER NORTHWEST FACE POWER POLE  
 R4: W 2 FEET TO CENTERLINE OF N-S GRAVEL RD
3. SOUTHEAST SECTION CORNER SECTION: 30 TOWNSHIP: 23S RANGE: 02W  
 STATE PLANE COOR. SYS NORTH: 1804301.65 EAST: 1579159.50  
 LIMESTONE WITH PK NAIL IN CENTER  
 R1: N 32°21'59" E 50.21 FEET TO GROUND LUG WEST FACE POWER POLE  
 R2: N 50°47'59" E 52.69 FEET TO TOP CENTER 9" BOLLARD  
 R3: S 20°58'11" W 62.34 FEET TO NAIL AND 2 WASHERS NORTH FACE OF POWER POLE  
 R4: S 59°21'44" W 46.10 FEET TO TOP CENTER TELEPHONE PEDESTAL  
 R5: N 64°35'04" W 54.81 FEET TO GROUND LUG NORTH FACE POWER POLE
4. WEST QUARTER SECTION CORNER SECTION: 32 TOWNSHIP: 23S RANGE: 02W  
 STATE PLANE COOR. SYS NORTH: 1801645.92 EAST: 1579195.92  
 1/2" IRON PIPE PEC CAP  
 R1: N 08°30'33" E 168.13 FEET TO GROUND LUG WEST FACE POWER POLE  
 R2: S 63°38'44" E 30.53 FEET TO ID TAG NORTH FACE METAL POWER POLE  
 R3: S 08°34'08" E 196.07 FEET TO GROUND LUG WEST FACE METAL POWER POLE
5. SOUTH QUARTER SECTION CORNER SECTION: 32 TOWNSHIP: 23S RANGE: 02W  
 STATE PLANE COOR. SYS NORTH: 1799033.030000 EAST: 1581875.250000  
 5/8" REBAR 0.7" DEEP  
 R1: S 00°17'45" E 35.27 FEET TO LONE HEDGE POST  
 R2: S 28°51'08" W 38.73 FEET TO PK NAIL WEST NORTHWEST FACE POWER POLE  
 R3: S 42°16'50" W 108.16 FEET TO MAG NAIL NORTH FACE 2" DIAMETER POWER POLE  
 R4: S 76°14'57" W 146.23 FEET TO PK NAIL NORTH FACE POWER POLE
6. SOUTHWEST SECTION CORNER SECTION: 32 TOWNSHIP: 23S RANGE: 02W  
 STATE PLANE COOR. SYS NORTH: 1799004.85 EAST: 1579218.83  
 1/2" REBAR  
 R1: N 40°36'54" E 46.57 FEET MAG NAIL SOUTH FACE CUT OFF POWER POLE  
 R2: S 47°59'40" E 50.72 FEET MAG NAIL WEST FACE POWER POLE  
 R3: S 41°34'24" E 47.75 FEET TOP CENTER UGT PEDESTAL  
 R4: S 76°15'49" W 64.59 FEET "X" CUT TOP CENTER SOUTH HEADWALL  
 R5: N 77°21'05" W 64.70 FEET "X" CUT TOP CENTER NORTH HEADWALL
7. EAST QUARTER SECTION CORNER SECTION: 6 TOWNSHIP: 24S RANGE: 02W  
 STATE PLANE COOR. SYS NORTH: 1796407.37 EAST: 1579237.86  
 1/2" REBAR  
 R1: N 47°59'12" E 32.44 FEET TO MAG NAIL WEST FACE 36" HEDGE TREE  
 R2: S 42°34'24" E 40.75 FEET TO MAG NAIL NORTHWEST FACE 15" HEDGE TREE  
 R3: N 85°57'16" W 25.22 FEET TO MAG NAIL EAST FACE 18" HEDGE TREE
8. SOUTHEAST SECTION CORNER SECTION: 6 TOWNSHIP: 24S RANGE: 02W  
 STATE PLANE COOR. SYS NORTH: 1793759.79 EAST: 1579235.62  
 5/8" REBAR  
 RL: N 27°02'01" E 65.11 FEET 40D WEST FACE POWER POLE  
 R2: N 67°52'24" E 41.98 FEET TO TOP CENTER UGT PEDESTAL  
 R3: S 43°36'52" E 52.59 FEET TO TOP CENTER NORTHWEST 9" BOLLARD  
 R4: S 43°22'49" E 52.28 FEET FOUND "X" CUT NORTHEAST FACE 9" BOLLARD  
 R5: S 40°23'27" W 35.38 FEET GROUND LUG EAST FACE POWER POLE  
 R6: N 24°48'20" W 56.30 FEET GROUND LUG WEST FACE POWER POLE
9. NORTHEAST SECTION CORNER SECTION: 9 TOWNSHIP: 24S RANGE: 02W  
 STATE PLANE COOR. SYS NORTH: 1793790.62 EAST: 1589831.59  
 1/2" REBAR  
 R1: N 15°02'41" E 60.85 FEET TO "X" CUT TOP 24" RCP  
 R2: S 54°25'08" E 33.10 FEET TO TOP CENTER UGT PEDESTAL  
 R3: S 15°50'35" E 60.27 FEET TO "X" CUT TOP 18" RCP  
 R4: S 14°07'12" W 60.49 FEET TO "X" CUT TOP 18" RCP  
 R5: N 13°12'13" W 60.32 FEET TO "X" CUT TOP 24" RCP
10. EAST QUARTER SECTION CORNER SECTION: 9 TOWNSHIP: 24S RANGE: 02W  
 STATE PLANE COOR. SYS NORTH: 1791138.11 EAST: 1589849.32  
 5/8" REBAR  
 R1: N 87°58'59" E 79.65 FEET PK NAIL IN TOP OF STUMP WEST END HEDGEROW  
 R2: S 13°00'47" W 93.99 FEET TO GROUND LUG EAST FACE POWER POLE  
 R3: N 52°24'41" W 53.29 FEET TO TOP CENTER SOUTH EAST 9" BOLLARD  
 R4: N 14°07'29" W 93.01 FEET TO GROUND LUG EAST FACE POWER POLE
11. SOUTHEAST SECTION QUARTER SECTION: 9 TOWNSHIP: 24S RANGE: 02W  
 STATE PLANE COOR. SYS NORTH: 1788487.91 EAST: 1589867.06  
 1" IRON BAR  
 R1: N 50°31'07" E 41.69 FEET TO CL UGT PEDESTAL  
 R2: N 72°47'16" E 73.98 FEET TO GROUND LUG SOUTH FACE POWER POLE  
 R3: S 73°43'17" E 58.04 FEET TO "X" CUT FOUND SOUTH END OF 24" RCP CULVERT  
 R4: S 36°37'31" E 41.44 FEET TO MAG NAIL IN THE NORTH EAST FACE OF POWER POLE  
 R5: S 26°35'04" W 52.32 FEET TO GROUND LUG WEST FACE POWER POLE  
 R6: N 62°56'52" W 50.88 FEET TO TOP CENTER OF WATER LINE MARKER POST
12. SOUTH QUARTER SECTION CORNER SECTION: 9 TOWNSHIP: 24S RANGE: 02W  
 STATE PLANE COOR. SYS NORTH: 1788492.52 EAST: 1587250.40  
 5/8" REBAR WITH CAP ILLEGIBLE  
 R1: N 02°58'22" W 21.54 FEET TO SPIKE TOP CENTER OF CORNER FENCE POST  
 R2: S 12°21'57" E 34.43 FEET TO SPIKE TOP CENTER OF BRACE POST  
 R3: S 04°09'22" E 30.61 FEET TO TOP CENTER EAST 6" BOLLARD  
 R4: S 32°54'09" W 39.70 FEET TO MAG MAIL IN NORTHWEST FACE OF BRACE POST

**BENCHMARKS**

1. MK03 (M03) SITE BENCHMARK  
 "SQUARE" CUT FOUND IN NW/COR CONC PAD.  
 ELEV: 1433.02' (NAVD88)
2. MR4 SITE BENCHMARK  
 "SQUARE" CUT SET IN SW/COR CONC PAD.  
 ELEV: 1428.65' (NAVD88)
3. MK05 (M05) SITE BENCHMARK  
 "SQUARE" CUT FOUND IN SE/COR CONC. PAD.  
 ELEV: 1434.13' (NAVD88)
4. MK07 (M07) SITE BENCHMARK  
 "SQUARE" CUT IN SW/COR CONC. PAD.  
 ELEV: 1430.33' (NAVD88)
5. MK16 (M16) SITE BENCHMARK  
 "SQUARE" CUT IN SW/COR CONC. PAD.  
 ELEV: 1410.91' (NAVD88)
6. MK17 (M17) SITE BENCHMARK  
 "SQUARE" CUT IN SE/COR CONC. PAD.  
 ELEV: 1408.44' (NAVD88)

WELLNAMES		
KDHE-EPA		LOCAL
MK03		M03
MK05		M05
MK07		M07
MK16		M16
MK17		M17
MK21		M21
MK27		M27
MK28		M28
MK33		M33
MK35		M35
MK37		M37
MK38		M38
MK39		M39
MK40		M40

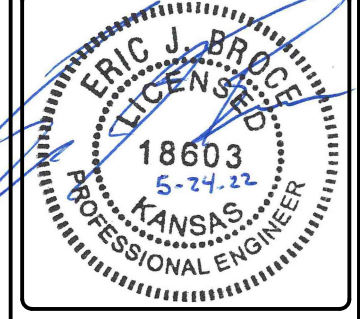
\* Reference to all wells in these construction documents follow the approved KDHE/EPA naming  
 \*\* Naming for the proposed spurlines (pipelines) follow the local, city of Wichita naming convention.

REVISIONS:	

Environment & Infrastructure Solutions, Inc.  
 245 N. WACO AVENUE, SUITE 110  
 WICHITA, KANSAS 67202  
 PHONE: 316-448-2711  
 FAX: 316-448-2711

**KEY MAP & CONTROL POINTS -1**  
 EQUUS WELLFIELD SPURLINE REPLACEMENT  
 GARY JANZEN, P.E. - CITY ENGINEER  
 CITY OF WICHITA

DESIGNED BY: EJB  
 DRAWN BY: JAN  
 CHECKED BY: ---  
 DATE: MAY 24, 2022



PROJECT NO.  
 639020

SHEET NO.  
**02**  
 OF 35