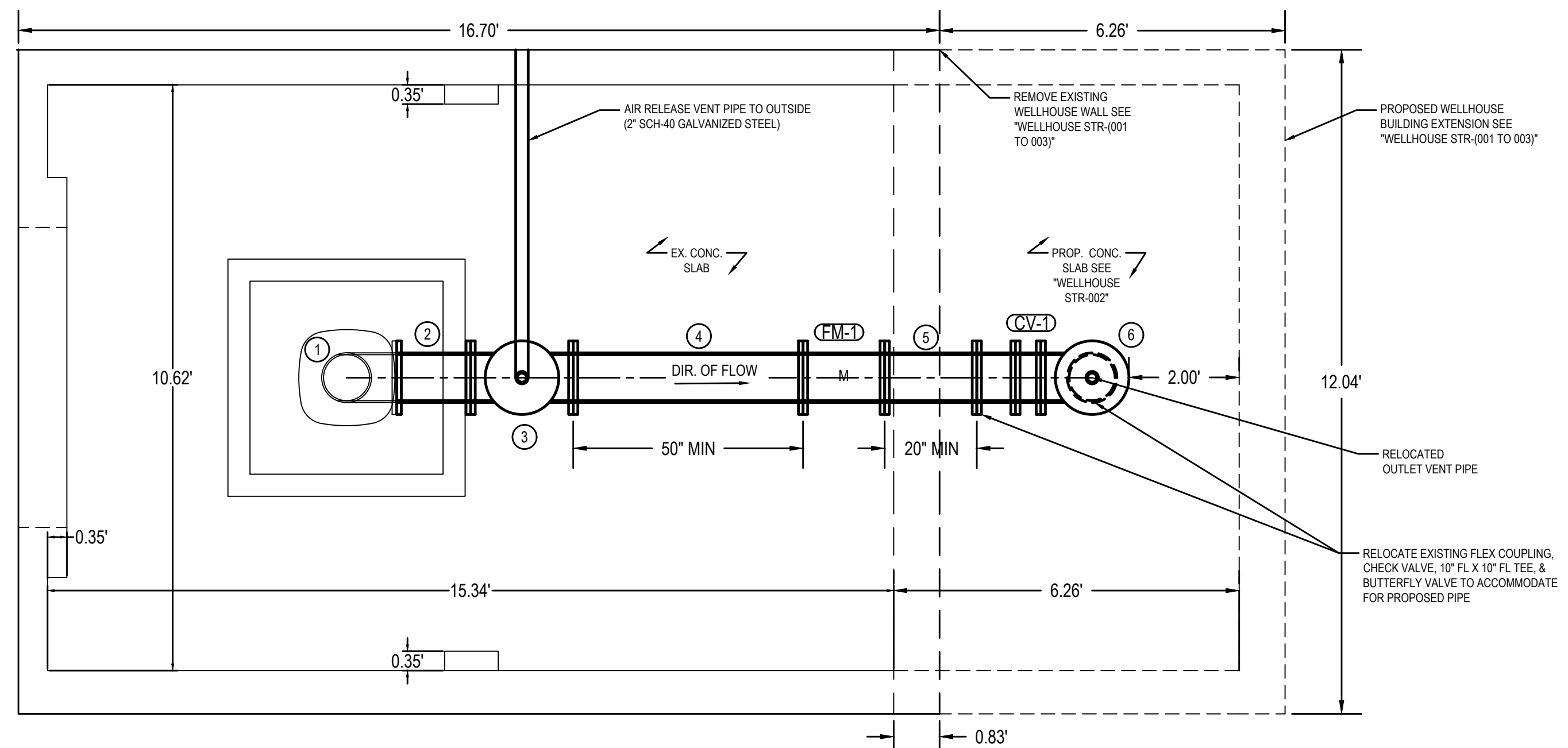
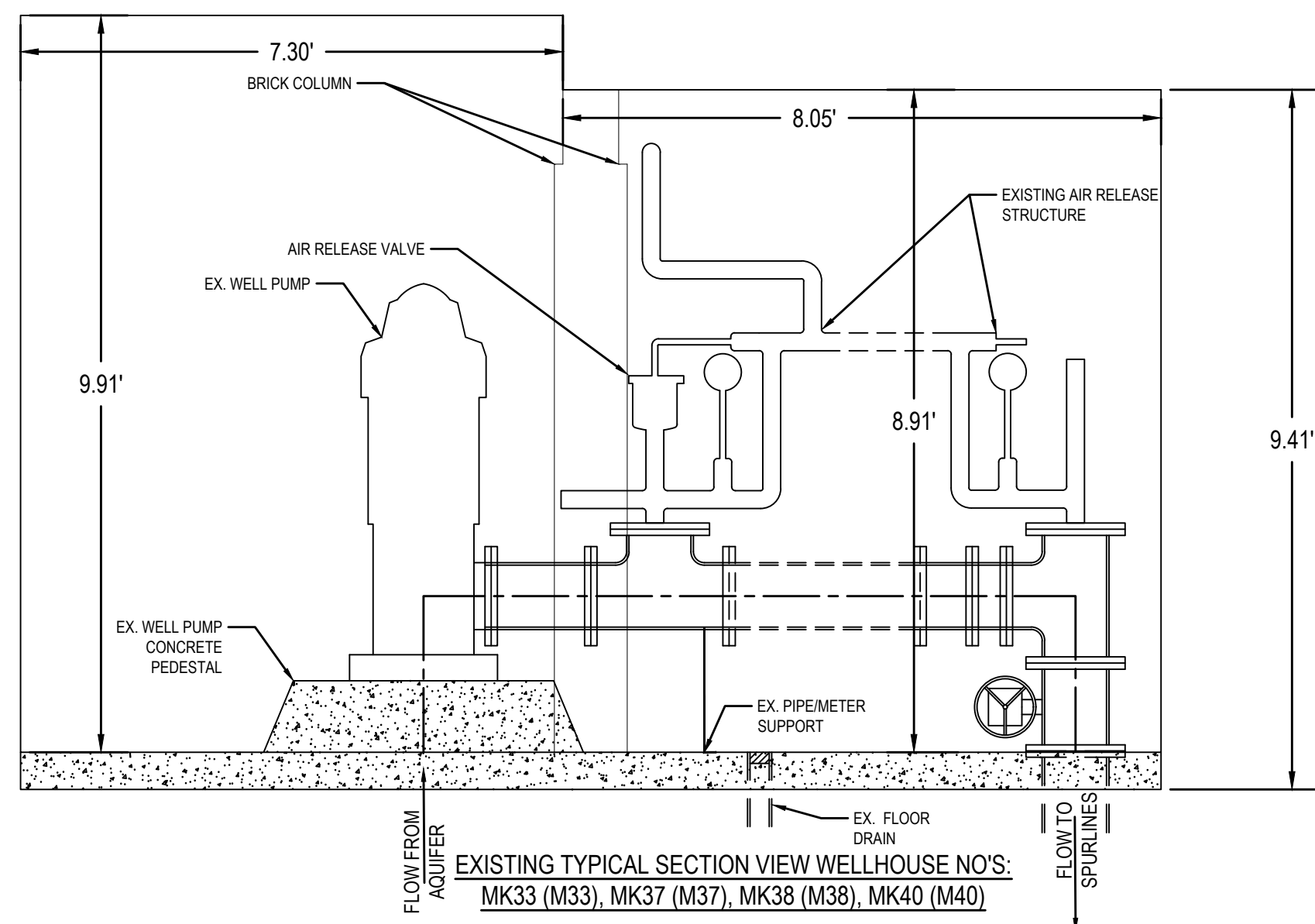


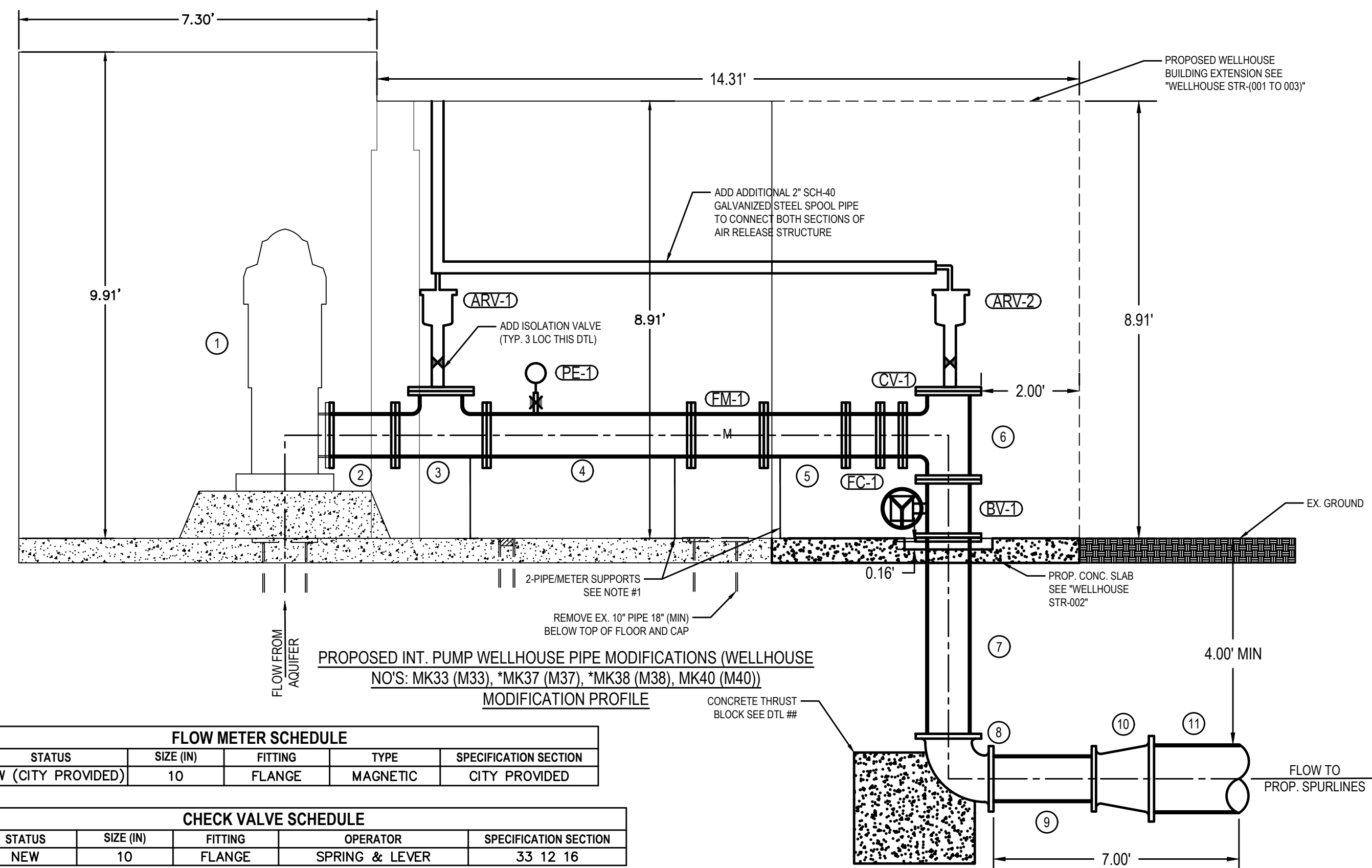
EXISTING TYPICAL PLAN VIEW WELLHOUSE NO'S: MK33 (M33), MK37 (M37), MK38 (M38), MK40 (M40)



PROPOSED INT. PUMP WELLHOUSE PIPE MODIFICATIONS (WELLHOUSE NO'S: MK33 (M33), *MK37 (M37), *MK38 (M38), MK40 (M40)) MODIFICATION PLAN



EXISTING TYPICAL SECTION VIEW WELLHOUSE NO'S: MK33 (M33), MK37 (M37), MK38 (M38), MK40 (M40)



PROPOSED INT. PUMP WELLHOUSE PIPE MODIFICATIONS (WELLHOUSE NO'S: MK33 (M33), *MK37 (M37), *MK38 (M38), MK40 (M40)) MODIFICATION PROFILE

FITTING SCHEDULE			
ITEM	DESC.	EX./NEW	NOTE
1	PUMP	EX.	
2	10" FL X FL DICL SPOOL	NEW	LENGTH AS REQUIRED
3	10" FL X 10" FL TEE	NEW	INCLUDES FLANGE CAP FOR AIR RELEASE STRUCTURE
4	10" FL X FL DICL SPOOL	NEW	LENGTH = 50"
5	10" FL X FL DICL SPOOL	NEW	LENGTH = 20"
6	10" FL X 10" FL TEE	NEW	INCLUDES FLANGE CAP FOR AIR RELEASE STRUCTURE
7	10" FL X PE DICL SPOOL	NEW	LENGTH AS REQUIRED
8	10" DICL RJ 90° BEND	NEW	
9	10" SPOOL PIPE	NEW	LENGTH AS REQUIRED
10	DICL RJ REDUCER	NEW	SEE REDUCER SCHEDULE THIS SHEET
11	PVC C900 PIPE	NEW	LENGTH AS REQUIRED & SEE REDUCER SCHEDULE THIS SHEET FOR DOWNSTREAM PIPE DIA.

FLOW METER SCHEDULE					
MARK	STATUS	SIZE (IN)	FITTING	TYPE	SPECIFICATION SECTION
FM-1	NEW (CITY PROVIDED)	10	FLANGE	MAGNETIC	CITY PROVIDED

CHECK VALVE SCHEDULE					
MARK	STATUS	SIZE (IN)	FITTING	OPERATOR	SPECIFICATION SECTION
CV-1	NEW	10	FLANGE	SPRING & LEVER	33 12 16

BUTTERFLY VALVE SCHEDULE					
MARK	STATUS	SIZE (IN)	FITTING	OPERATOR	SPECIFICATION SECTION
BV-1	NEW	10	FLANGE	GEARED W/ HANDWHEEL	33 12 16

AIR RELEASE VALVE SCHEDULE				
MARK	STATUS	SIZE	FITTING	SPECIFICATION SECTION
ARV-1	NEW	2"	THREADED	33 12 16
ARV-2	NEW	2"	THREADED	33 12 16

PRESSURE ELEMENT SCHEDULE									
MARK	STATUS	INDICATOR	TRANSMITTER	PS-LOW	PS-HIGH	BALL VALVE	DIAPHRAGM	RANGE (PSI)	SPECIFICATION SECTION
PE-1	NEW	X	X			X		0-150	43 21 31

FLEX COUPLING SCHEDULE				
MARK	STATUS	SIZE (IN)	FITTING	SPECIFICATION SECTION
FC-1	NEW	10	FLANGE	43 21 31

INT. PUMP WELLHOUSE REDUCER SCHEDULE		
LINE NO.	REDUCER	DOWNSTREAM PIPE DIA. (IN)
M33	10" X 12" RJ REDUCER	12
M37	10" X 16" RJ REDUCER	16
M38	10" X 16" RJ REDUCER	16
M40	10" X 16" RJ REDUCER	16

- NOTES:
- METER SUPPORTS MAY BE POURED IN PLACE OR MECHANICAL PIPE SUPPORTS AS MANUFACTURED BY ITT GRINNELL OR APPROVED EQUAL ON 2" CONCRETE PADS
 - ALL PIPE, APPURTENANCES, AND OTHER ITEMS REQUIRED TO COMPLETE THE WELLHOUSE MODIFICATIONS AS SHOWN SHALL BE FURNISHED AND INSTALLED BY CONTRACTOR AND SHALL BE INCLUDED IN THE BID FOR
 - UPON INSTALLATION OF PROP. CONCRETE SLAB (OUTLINED IN DTL #4) CONTRACTOR SHALL VERIFY WATER FLOWS TO EX. DRAIN.
 - COORDINATE PUMP OPERATIONS WITH WELLFIELD STAFF.
 - EXISTING HEATER AND POWER OUTLET SHALL BE RELOCATED TO THE NEW BACK WALL.
 - ARV-1 SHALL BE A 2" A.R.I. D-860-C HF OR APPROVED EQUAL.
 - ARV-2 SHALL BE A 2" A.R.I. D-860-C HF NS OR APPROVED EQUAL.

*DENOTES AN ADD ALTERNATE WELLHOUSE

REVISIONS:

Environment & Infrastructure Solutions, Inc.
245 N. WACO AVENUE, SUITE 110
WICHITA, KANSAS 67202
PHONE: 316-448-2711
FAX: 316-448-2711

wood.

INTERIOR PUMP WELLHOUSE MODIFICATIONS

EQUUS WELLFIELD SPURLINE REPLACEMENT
GARY JANZEN, P.E. - CITY ENGINEER
CITY OF WICHITA

DESIGNED BY: EJB
DRAWN BY: AJM
CHECKED BY: ---
DATE: MAY 24, 2022



PROJECT NO.
639020

SHEET NO.
26
OF 35

Last saved by: alex.mckeen - Plotted: Alex Plot Date/Time: 5/24/2022 1:41 PM
File: L:\8275000373 Wichita Spurline\05_CAD\Sheets\Wellhouse Modifications\M5_Wellhouse_Modification.dwg